

Converting Colors

Hex(F3CBCA)

Have a look what the booklet for
Hex(F3CBCA) contains.

Hex(F3CBCA)	3
<i>Conversions</i>	4
<i>Details</i>	6
<i>Harmonies</i>	11
<i>Previews</i>	23
<i>Color Blindness Simulation</i>	26
<i>CSS Examples</i>	29

Color

Hex(F3CBCA)

Conversions

Conversions Part 1

Format	Color
Hex	F3CBCA
RGB	243, 203, 202
RGB Percent	95%, 80%, 79%
CMY	0.0471, 0.2039, 0.2078
CMYK	0.00, 0.16, 0.17, 0.05
HSL	1°, 63%, 87%
HSV	1°, 17%, 95%
XYZ	68.9788, 66.0308, 64.9868
YIQ	214.8460, 24.1610, 8.1690

Conversions

Conversions Part 2

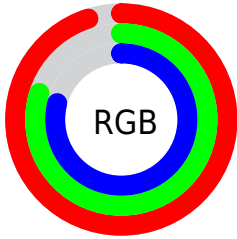
Format	Color
R_{YB}	243, 203, 202
Decimal	15977418
CIE _{Lab}	85.01, 13.93, 5.77
CIE _{LCh}	85, 15.077, 22.494
Yxy	66.0308, 0.3449, 0.3302
Android (android.graphics.Color)	4294167498 (0xFFFF3BCA)
YUV	214.8460, -6.3331, 24.6911
Hunter-Lab	81.2594, 9.3197, 9.4647

Details

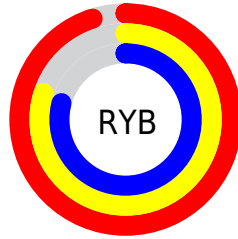
The Hex color **F3CBCA** is a light color, and the websafe version is hex **FFCCCC**. A complement of this color would be **CAF2F3**, and the grayscale version is **D7D7D7**.

A 20% lighter version of the original color is **FFFFFF**, and **BA9594** is the 20% darker color. If you saturate the color by 10%, you get **F3B3B2**, and if you desaturate by 10%, it is **F3E3E2**.

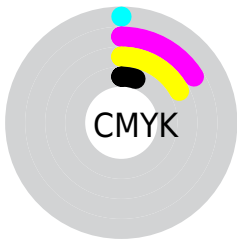
Distribution



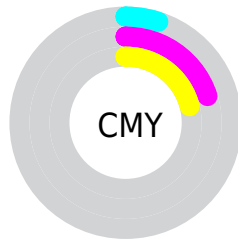
- Red (95%)
- Green (80%)
- Blue (79%)



- Red (95%)
- Yellow (80%)
- Blue (79%)



- Cyan (0%)
- Magenta (16%)
- Yellow (17%)
- Black (5%)



- Cyan (5%)
- Magenta (20%)
- Yellow (21%)

Brightness & Saturation Gradients

These gradients show how the Hex color F3BCBA changes by changing the brightness by 10 percent. The first figure shows a shift by +10% for each color and the second figure -10%.

Similar to the brightness gradients but the following saturation gradients show a change of the Hex color F3BCBA by changing the saturation by 10% instead.

 F3CBCA

FFFFFF

 F3CBCA

 D6B0AF

 BA9594

 9F7B7A

 856261

 6B4A4A

 523333

 3A1E1E

 250705

 000000

 F3CBCA

 F3CBCA

 F3B3B2

 F3E3E2

 F39C99

 F3FAFB

 F38481

 F3FFFF

 F36C69

 F35450

 F33D38

 F32520

 F30D08

 F30600

Harmonies

Analogous

The Analogous color harmony consists of three colors that are next to each other on the color wheel.



EFCBD8



F3CBCA



EFCEBE

Triad

The Triadic color harmony groups three colors that are evenly spaced from another and form a triangle on the color wheel.



F3CBCA



C4DAC3



C1D7F0

Complementary

The Complementary color scheme is a pair of colors which are on the opposite of each other on the color wheel.



F3CBCA



CAF2F3

Split Complementary

Split-complementary colors differ from the complementary color scheme. The scheme consists of three colors, the original color and two neighbors of the complement color.



B4DAEA



F3CBCA



B6DDDO

Square

The Square scheme is like the rectangle color scheme, but the four colors are evenly spaced on the color wheel.



F3CBCA



D4D7BA



B0DDDF



D3D2EE

Rectangle

The Rectangle color scheme consists of four colors that form a rectangle on the color wheel.



F3BCBA



E8D1BA



B0DDDF



BCD8EF

Sweetspot

The Sweet Spot groups the original color and five complimentary colors.



F3CBCA



FFF3F2



F3CAF2



807878



000000



808080

Same Dimension

The Same Dimension uses a secret algorithm to generate beautiful new colors.



F3BCBA



FFCDCC



F3DFCA



7A6E6E



BA0500



3B0100

Inverse Universe

The Inverse Universe completely reimagines the original color for something new.



CAF2F3



CCFEFF



CADEF3



6E7A7A



00B6BA



00393B

Previews

White Background



This preview shows how the Hex color F3CBCA looks on a white background.

Color Contrast Check

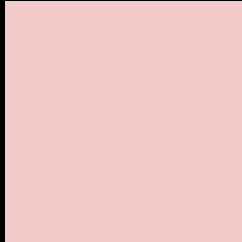
Large Text (above 18pt) WCAG AA × Fail

Any Text WCAG AA × Fail

Large Text (above 18pt) WCAG AAA × Fail

Any Text WCAG AAA × Fail

Black Background



This preview shows how the Hex color F3CBCA looks on a black background.

Color Contrast Check

Large Text (above 18pt) WCAG AA ✓ Pass

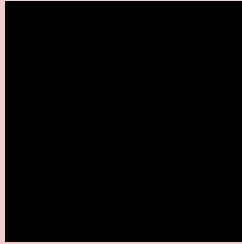
Any Text WCAG AA ✓ Pass

Large Text (above 18pt) WCAG AAA ✓ Pass

Any Text WCAG AAA ✓ Pass

If you want to check with other color combinations, try the [Color Contrast Checker](#).

Hex F3CBCA Background



This preview shows how black text looks on a background with the Hex color F3CBCA.

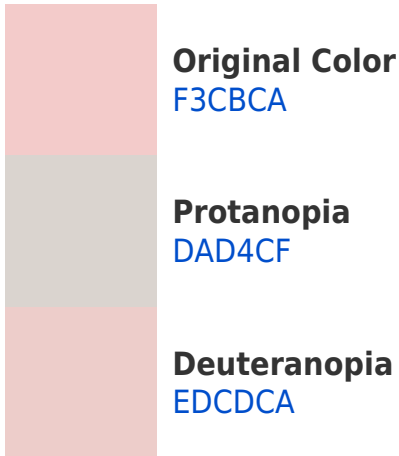


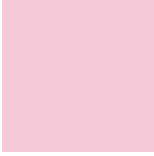
This preview shows how white text looks on a background with the Hex color F3CBCA.

Color Blindness Simulation

Color vision deficiency is a very complex topic, and I could not describe the different causes any better than Wikipedia does, so if you want to learn more, you should check out their [article about color blindness](#).

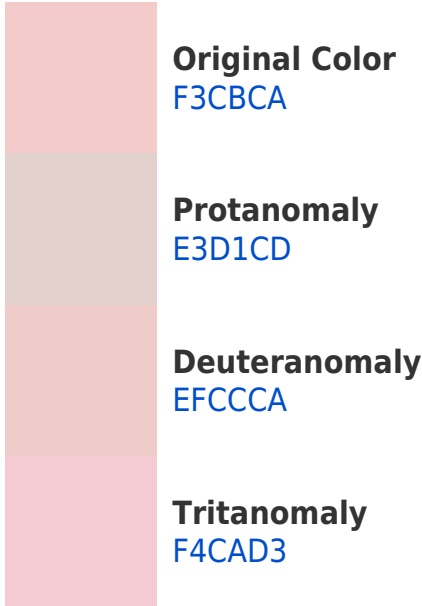
Dichromacy



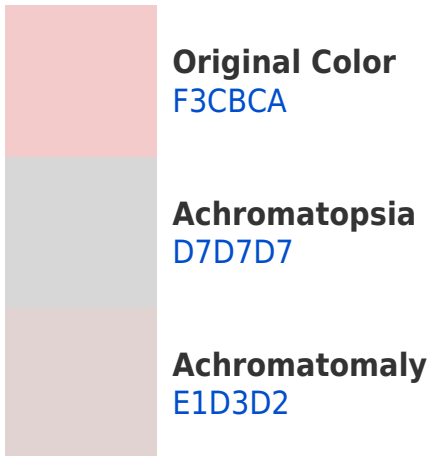


Tritanopia
F5C9D8

Trichromacy



Monochromacy



CSS Examples

Text

The CSS property to change the color of the text to Hex F3CBCA is called "color". The color property can be set on classes, ids or directly on the HTML element.

This example shows how text in the color #F3CBCA looks like.

```
.text, #text, p{  
    color:#F3CBCA  
}
```

If you want to add a text shadow in that color use the text-shadow property, you can generate a text shadow directly with our [CSS Text Shadow Generator](#).

Here you see how black text with a 4 pixel #F3CBCA colored shadow looks like.

```
.shadow{ text-shadow: 4px 4px 2px #F3CBCA
}
```

Border

The CSS property to change the border of an element to Hex F3CBCA is called "border". The border property can be set on classes, ids or directly on the HTML element.

This example shows the color as border, it can be applied via the CSS property "border" or "border-color".

```
.border, #border, table{ border:4px solid
#F3CBCA }
```

If only the border color should be changed use the property `border-color`.

```
.border{ border-color:#F3CBCA }
```

If you want to add a box shadow in that color use:

Here you see how a box with a 4 pixel #F3CBCA colored shadow looks like.

```
.boxshadow{ -moz-box-shadow:4px 4px 4px  
4px #F3CBCA; -webkit-box-shadow:4px 4px  
4px 4px #F3CBCA; box-shadow:4px 4px 4px  
4px #F3CBCA }
```

Background

The CSS property to change the background color of an element to Hex F3CBCA is called "background". The background property can be set on classes, ids or directly on the HTML element.

```
.background, #background, body{  
background:#F3CBCA }
```

If only the background color should be changed can be used:

```
.background{ background-color:#F3CBCA }
```

This example shows the color as background, it is applied via the CSS property "background".

To optimize and compress your CSS code, you can use our [online CSS compressor and optimizer](#) based on csstidy. If you want to create a linear or radial gradient as background or border, check our [CSS Gradient Generator](#).

Hey! You found this booklet interesting? Support Converting Colors with the new Membership Option!

The pro membership hides all ads, plus gives you double the colors in the color bucket, and more awesome pro features!

[Learn more, Memberships starting at \\$2.50/m!](#)

**Follow me
on Twitter!**

@ConvertingColor