

Converting Colors

Hex(F3D5C2)

Have a look what the booklet for
Hex(F3D5C2) contains.

Hex(F3D5C2)	3
<i>Conversions</i>	4
<i>Details</i>	6
<i>Harmonies</i>	11
<i>Previews</i>	23
<i>Color Blindness Simulation</i>	26
<i>CSS Examples</i>	29

Color

Hex(F3D5C2)

Conversions

Conversions Part 1

Format	Color
Hex	F3D5C2
RGB	243, 213, 194
RGB Percent	95%, 84%, 76%
CMY	0.0471, 0.1647, 0.2392
CMYK	0.00, 0.12, 0.20, 0.05
HSL	23°, 67%, 86%
HSV	23°, 20%, 95%
XYZ	70.4940, 70.5382, 60.9387
YIQ	219.8040, 23.9790, 0.4510

Conversions

Conversions Part 2

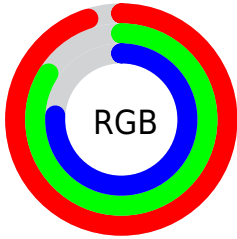
Format	Color
RYB	243, 225, 194
Decimal	15979970
CIELab	87.26, 7.51, 13.22
CIElCh	87, 15.198, 60.404
Yxy	70.5382, 0.3490, 0.3492
Android (android.graphics.Color)	4294170050 (0xFFFF3D5C2)
YUV	219.8040, -12.7214, 20.3429
Hunter-Lab	83.9870, 2.8456, 15.7717

Details

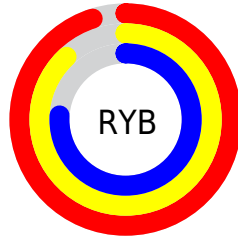
The Hex color **F3D5C2** is a light color, and the websafe version is hex **FFCCCC**. A complement of this color would be **C2E0F3**, and the grayscale version is **DCDCDC**.

A 20% lighter version of the original color is **FFFFFFB**, and **BA9E8C** is the 20% darker color. If you saturate the color by 10%, you get **F3C6AA**, and if you desaturate by 10%, it is **F3E4DA**.

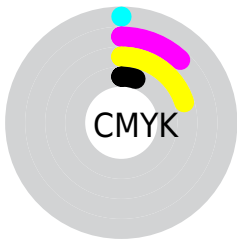
Distribution



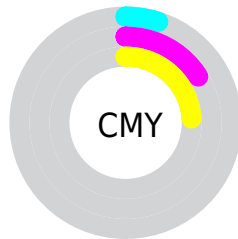
- Red (95%)
- Green (84%)
- Blue (76%)



- Red (95%)
- Yellow (88%)
- Blue (76%)



- Cyan (0%)
- Magenta (12%)
- Yellow (20%)
- Black (5%)



- Cyan (5%)
- Magenta (16%)
- Yellow (24%)

Brightness & Saturation Gradients

These gradients show how the Hex color F3D5C2 changes by changing the brightness by 10 percent. The first figure shows a shift by +10% for each color and the second figure -10%.

Similar to the brightness gradients but the following saturation gradients show a change of the Hex color F3D5C2 by changing the saturation by 10% instead.

 F3D5C2

 F3D5C2

FFFFFF

 D6B9A7

 FFFFFB

 BA9E8C

 9F8473

 856B5A

 6B5343

 523C2D

 3A2618

 251200

 000000

 F3D5C2

 F3D5C2

 F3C6AA

 F3E4DA

 F3B791

 F3F3F3

 F3A879

 F3FFFF

 F39961

 F38B49

 F37C30

 F36D18

 F35E00

Harmonies

Analogous

The Analogous color harmony consists of three colors that are next to each other on the color wheel.



F9D2CD



F3D5C2



E6DABE

Triad

The Triadic color harmony groups three colors that are evenly spaced from another and form a triangle on the color wheel.



F3D5C2



BAE3DA



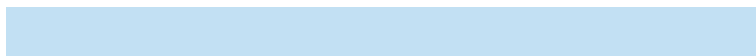
DED7F3

Complementary

The Complementary color scheme is a pair of colors which are on the opposite of each other on the color wheel.



F3D5C2



C2E0F3

Split Complementary

Split-complementary colors differ from the complementary color scheme. The scheme consists of three colors, the original color and two neighbors of the complement color.



CBDCF7



F3D5C2



B6E3E9

Square

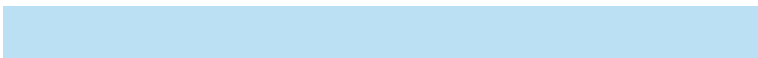
The Square scheme is like the rectangle color scheme, but the four colors are evenly spaced on the color wheel.



F3D5C2



C6E2CC



BCE0F3



EED3E9

Rectangle

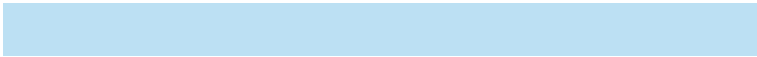
The Rectangle color scheme consists of four colors that form a rectangle on the color wheel.



F3D5C2



DCDDC0



BCE0F3



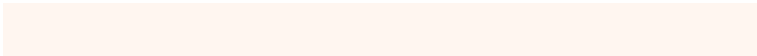
D8D8F6

Sweetspot

The Sweet Spot groups the original color and five complimentary colors.



F3D5C2



FFF6F0



F3C2E0



807A77



000000



808080

Same Dimension

The Same Dimension uses a secret algorithm to generate beautiful new colors.



F3D5C2



FFDAC2



F3EDC2



7A736E



BA4800



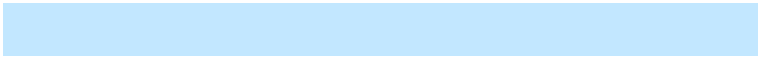
3B1700

Inverse Universe

The Inverse Universe completely reimagines the original color for something new.



C2E0F3



C2E7FF



C2C8F3



6E767A



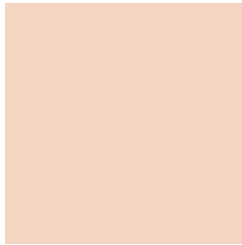
0072BA



00243B

Previews

White Background



This preview shows how the Hex color F3D5C2 looks on a white background.

Color Contrast Check

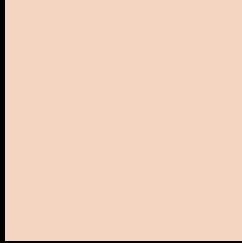
Large Text (above 18pt) WCAG AA × Fail

Any Text WCAG AA × Fail

Large Text (above 18pt) WCAG AAA × Fail

Any Text WCAG AAA × Fail

Black Background



This preview shows how the Hex color F3D5C2 looks on a black background.

Color Contrast Check

Large Text (above 18pt) WCAG AA ✓ Pass

Any Text WCAG AA ✓ Pass

Large Text (above 18pt) WCAG AAA ✓ Pass

Any Text WCAG AAA ✓ Pass

If you want to check with other color combinations, try the [Color Contrast Checker](#).

Hex F3D5C2 Background



This preview shows how black text looks on a background with the Hex color F3D5C2.

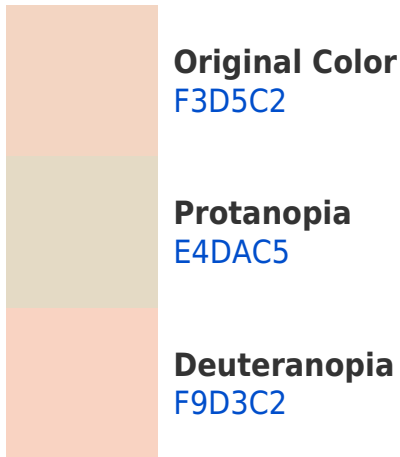


This preview shows how white text looks on a background with the Hex color F3D5C2.

Color Blindness Simulation

Color vision deficiency is a very complex topic, and I could not describe the different causes any better than Wikipedia does, so if you want to learn more, you should check out their [article about color blindness](#).

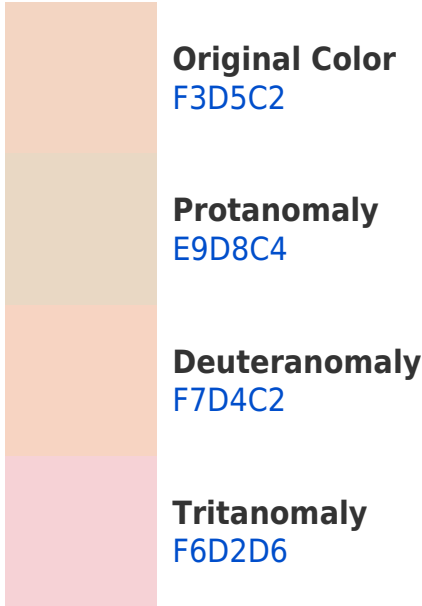
Dichromacy



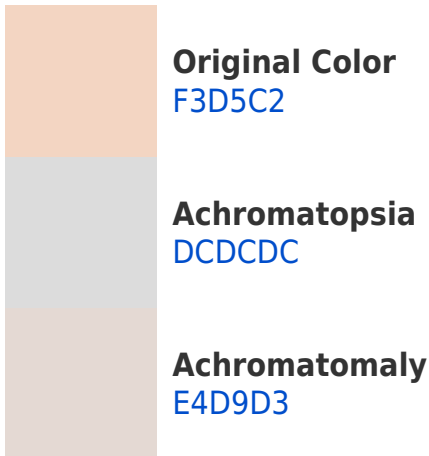


Tritanopia
F7D0E1

Trichromacy



Monochromacy



CSS Examples

Text

The CSS property to change the color of the text to Hex F3D5C2 is called "color". The color property can be set on classes, ids or directly on the HTML element.

This example shows how text in the color #F3D5C2 looks like.

```
.text, #text, p{  
    color:#F3D5C2  
}
```

If you want to add a text shadow in that color use the text-shadow property, you can generate a text shadow directly with our [CSS Text Shadow Generator](#).

Here you see how black text with a 4 pixel #F3D5C2 colored shadow looks like.

```
.shadow{ text-shadow: 4px 4px 2px #F3D5C2
}
```

Border

The CSS property to change the border of an element to Hex F3D5C2 is called "border". The border property can be set on classes, ids or directly on the HTML element.

This example shows the color as border, it can be applied via the CSS property "border" or "border-color".

```
.border, #border, table{ border:4px solid
#F3D5C2 }
```

If only the border color should be changed use the property `border-color`.

```
.border{ border-color:#F3D5C2 }
```

If you want to add a box shadow in that color use:

Here you see how a box with a 4 pixel #F3D5C2 colored shadow looks like.

```
.boxshadow{ -moz-box-shadow:4px 4px 4px  
4px #F3D5C2; -webkit-box-shadow:4px 4px  
4px 4px #F3D5C2; box-shadow:4px 4px 4px  
4px #F3D5C2 }
```

Background

The CSS property to change the background color of an element to Hex F3D5C2 is called "background". The background property can be set on classes, ids or directly on the HTML element.

```
.background, #background, body{  
background:#F3D5C2 }
```

If only the background color should be changed can be used:

```
.background{ background-color:#F3D5C2 }
```

This example shows the color as background, it is applied via the CSS property "background".

To optimize and compress your CSS code, you can use our [online CSS compressor and optimizer](#) based on csstidy. If you want to create a linear or radial gradient as background or border, check our [CSS Gradient Generator](#).

Hey! You found this booklet interesting? Support Converting Colors with the new Membership Option!

The pro membership hides all ads, plus gives you double the colors in the color bucket, and more awesome pro features!

[Learn more, Memberships starting at \\$2.50/m!](#)

**Follow me
on Twitter!**

@ConvertingColor