

# Converting Colors

Hex(F43763)

Have a look what the booklet for  
Hex(F43763) contains.

<b>Hex(F43763)</b> .....	3
<i><b>Conversions</b></i> .....	4
<i><b>Details</b></i> .....	6
<i><b>Harmonies</b></i> .....	11
<i><b>Previews</b></i> .....	23
<i><b>Color Blindness Simulation</b></i> .....	26
<i><b>CSS Examples</b></i> .....	29

**Color**

**Hex(F43763)**

# Conversions

## Conversions Part 1

<b>Format</b>	<b>Color</b>
Hex	F43763
RGB	244, 55, 99
RGB Percent	96%, 22%, 39%
CMY	0.0431, 0.7843, 0.6118
CMYK	0.00, 0.77, 0.59, 0.04
HSL	346°, 90%, 59%
HSV	346°, 77%, 96%
XYZ	40.9265, 22.8663, 14.0610
YIQ	116.5270, 98.5200, 53.7520

# Conversions

## Conversions Part 2

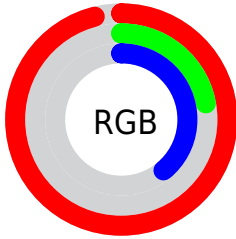
<b>Format</b>	<b>Color</b>
<b>R<sub>YB</sub></b>	244, 55, 99
Decimal	16004963
CIE <sub>Lab</sub>	54.93, 71.81, 21.21
CIE <sub>LCh</sub>	55, 74.880, 16.454
Yxy	22.8663, 0.5257, 0.2937
Android (android.graphics.Color)	4294195043 (0xFFFF43763)
YUV	116.5270, -8.6408, 111.7938
Hunter-Lab	47.8187, 69.0897, 16.0391

# Details

The Hex color **F43763** is a dark color, and the websafe version is hex **FF3366**. The color can be described as middle washed rose. A complement of this color would be **37F4C8**, and the grayscale version is **757575**.

A 20% lighter version of the original color is **FF7795**, and **B50035** is the 20% darker color. If you saturate the color by 10%, you get **F41F50**, and if you desaturate by 10%, it is **F44F76**.

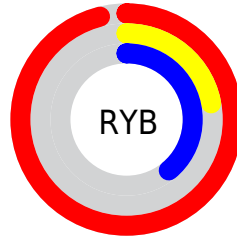
# Distribution



Red (96%)

Green (22%)

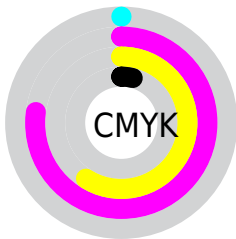
Blue (39%)



Red (96%)

Yellow (22%)

Blue (39%)

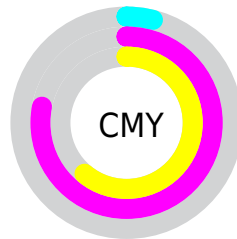


Cyan (0%)

Magenta (77%)

Yellow (59%)

Black (4%)



Cyan (4%)

Magenta (78%)

Yellow (61%)

# Brightness & Saturation Gradients

These gradients show how the Hex color F43763 changes by changing the brightness by 10 percent. The first figure shows a shift by +10% for each color and the second figure -10%.

Similar to the brightness gradients but the following saturation gradients show a change of the Hex color F43763 by changing the saturation by 10% instead.



 F43763

 F43763

FFFFFF

 D4004B

 FF7795

 B50035

 FF94B0

 950021

 FFB2CB

 76000A

 FFCFE7

 580002

 FFEDFF

 390002

 110000

 000000

 F43763

 F43763

 F41F50

 F44F76

 F4063E

 F46888

 F40039

 F4809B

 F499AE

 F4B1C1

 F4C9D3

 F4E2E6

 F4FAF9

 F4FFFF

# Harmonies

## Analogous

The Analogous color harmony consists of three colors that are next to each other on the color wheel.



E73CA4



F43763



E15724

# Triad

The Triadic color harmony groups three colors that are evenly spaced from another and form a triangle on the color wheel.



F43763



22981B



0094FF

# Complementary

The Complementary color scheme is a pair of colors which are on the opposite of each other on the color wheel.



F43763



37F4C8

# Split Complementary

Split-complementary colors differ from the complementary color scheme. The scheme consists of three colors, the original color and two neighbors of the complement color.



009DE1



F43763



009E63

# Square

The Square scheme is like the rectangle color scheme, but the four colors are evenly spaced on the color wheel.



F43763



7E8B00



00A0A7



1F7FFF

# Rectangle

The Rectangle color scheme consists of four colors that form a rectangle on the color wheel.



F43763



C76C00



00A0A7



0098FB



# Sweetspot

The Sweet Spot groups the original color and five complimentary colors.



F43763



FFC4D2



C837F4



805C64



000000



808080



# Same Dimension

The Same Dimension uses a secret algorithm to generate beautiful new colors.



F43763



FF1249



F46937



7A6E71



BA002B



3B000E



# Inverse Universe

The Inverse Universe completely reimagines the original color for something new.



F43763



FF1249



37C2F4



7A6E71



BA002B



3B000E



# Previews

## White Background



This preview shows how the Hex color F43763 looks on a white background.

## Color Contrast Check

Large Text (above 18pt) WCAG AA ✓ Pass

Any Text WCAG AA × Fail

Large Text (above 18pt) WCAG AAA × Fail

Any Text WCAG AAA × Fail

# Black Background



## Color Contrast Check

Large Text (above 18pt) WCAG AA ✓ Pass

Any Text WCAG AA ✓ Pass

Large Text (above 18pt) WCAG AAA ✓ Pass

Any Text WCAG AAA × Fail

If you want to check with other color combinations, try the [Color Contrast Checker](#).



## Hex F43763 Background



This preview shows how black text looks on a background with the Hex color F43763.



This preview shows how white text looks on a background with the Hex color F43763.

# Color Blindness Simulation

Color vision deficiency is a very complex topic, and I could not describe the different causes any better than Wikipedia does, so if you want to learn more, you should check out their [article about color blindness](#).

## Dichromacy



**Original Color**  
F43763

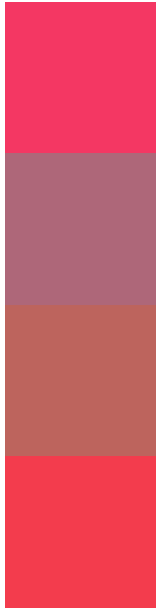
**Protanopia**  
868386

**Deuteranopia**  
9E7E5A



**Tritanopia**  
F33F41

# Trichromacy



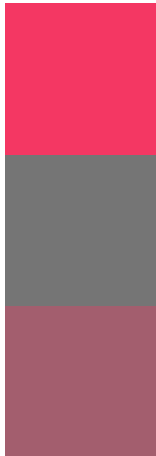
**Original Color**  
F43763

**Protanomaly**  
AE6779

**Deuteranomaly**  
BD645D

**Tritanomaly**  
F33C4D

# Monochromacy



**Original Color**  
F43763

**Achromatopsia**  
757575

**Achromatomaly**  
A35E6E

# CSS Examples

## Text

The CSS property to change the color of the text to Hex F43763 is called "color". The color property can be set on classes, ids or directly on the HTML element.

This example shows how text in the color #F43763 looks like.

```
.text, #text, p{  
  color:#F43763  
}
```

If you want to add a text shadow in that color use the text-shadow property, you can generate a text shadow directly with our [CSS Text Shadow Generator](#).

Here you see how black text with a 4 pixel #F43763 colored shadow looks like.

```
.shadow{ text-shadow: 4px 4px 2px #F43763
}
```

## Border

The CSS property to change the border of an element to Hex F43763 is called "border". The border property can be set on classes, ids or directly on the HTML element.

This example shows the color as border, it can be applied via the CSS property "border" or "border-color".

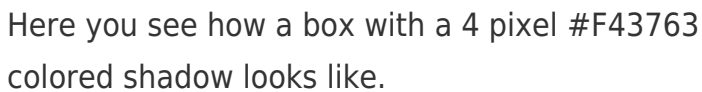
```
.border, #border, table{ border:4px solid
#F43763 }
```

If only the border color should be changed use the property `border-color`.

```
.border{ border-color:#F43763 }
```

If you want to add a box shadow in that color use:

Here you see how a box with a 4 pixel #F43763 colored shadow looks like.



```
.boxshadow{ -moz-box-shadow:4px 4px 4px  
4px #F43763; -webkit-box-shadow:4px 4px  
4px 4px #F43763; box-shadow:4px 4px 4px  
4px #F43763 }
```

# Background

The CSS property to change the background color of an element to Hex F43763 is called "background". The background property can be set on classes, ids or directly on the HTML element.

```
.background, #background, body{  
background:#F43763 }
```

If only the background color should be changed can be used:

```
.background{ background-color:#F43763 }
```

This example shows the color as background, it is applied via the CSS property "background".

To optimize and compress your CSS code, you can use our [online CSS compressor and optimizer](#) based on csstidy. If you want to create a linear or radial gradient as background or border, check our [CSS Gradient Generator](#).



Hey! You found this booklet interesting? Support Converting Colors with the new Membership Option!

The pro membership hides all ads, plus gives you double the colors in the color bucket, and more awesome pro features!

**[Learn more, Memberships starting at \\$2.50/m!](#)**

**Follow me  
on Twitter!**

@ConvertingColor