

Converting Colors

Hex(F4486E)

Have a look what the booklet for
Hex(F4486E) contains.

Hex(F4486E)	3
<i>Conversions</i>	4
<i>Details</i>	6
<i>Harmonies</i>	11
<i>Previews</i>	23
<i>Color Blindness Simulation</i>	26
<i>CSS Examples</i>	29

Color

Hex(F4486E)

Conversions

Conversions Part 1

Format	Color
Hex	F4486E
RGB	244, 72, 110
RGB Percent	96%, 28%, 43%
CMY	0.0431, 0.7176, 0.5686
CMYK	0.00, 0.70, 0.55, 0.04
HSL	347°, 89%, 62%
HSV	347°, 70%, 96%
XYZ	42.4401, 24.9936, 17.3393
YIQ	127.7600, 90.3140, 48.2820

Conversions

Conversions Part 2

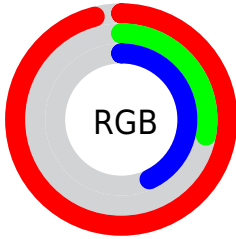
Format	Color
R_{YB}	244, 72, 110
Decimal	16009326
CIE _{Lab}	57.07, 67.21, 17.58
CIE _{LCh}	57, 69.470, 14.655
Yxy	24.9936, 0.5006, 0.2948
Android (android.graphics.Color)	4294199406 (0xFFFF4486E)
YUV	127.7600, -8.7557, 101.9425
Hunter-Lab	49.9936, 64.0416, 14.4320

Details

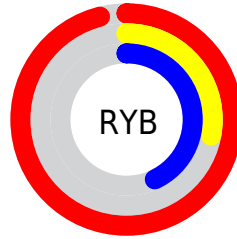
The Hex color **F4486E** is a dark color, and the websafe version is hex **FF3366**. The color can be described as middle washed rose. A complement of this color would be **48F4CE**, and the grayscale version is **808080**.

A 20% lighter version of the original color is **FF83A1**, and **B5003F** is the 20% darker color. If you saturate the color by 10%, you get **F4305B**, and if you desaturate by 10%, it is **F46081**.

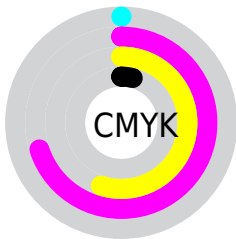
Distribution



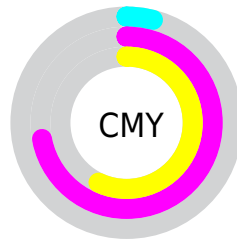
- Red (96%)
- Green (28%)
- Blue (43%)



- Red (96%)
- Yellow (28%)
- Blue (43%)



- Cyan (0%)
- Magenta (70%)
- Yellow (55%)
- Black (4%)



- Cyan (4%)
- Magenta (72%)
- Yellow (57%)

Brightness & Saturation Gradients

These gradients show how the Hex color F4486E changes by changing the brightness by 10 percent. The first figure shows a shift by +10% for each color and the second figure -10%.

Similar to the brightness gradients but the following saturation gradients show a change of the Hex color F4486E by changing the saturation by 10% instead.

 F4486E

 F4486E

FFFFFF

 D52556

 FF83A1

 B5003F

 FFA0BC

 970029

 FFBED8

 780016

 FFDBF4

 5A0001

 FFF9FF

 3D0003

 180001

 000000

 F4486E

 F4486E

 F4305B

 F46081

 F41748

 F47994

 F40036

 F491A7

 F4AABA

 F4C2CD

 F4DAE0

 F4F3F3

 F4FFFF

Harmonies

Analogous

The Analogous color harmony consists of three colors that are next to each other on the color wheel.



E54EAB



F4486E



E45F35

Triad

The Triadic color harmony groups three colors that are evenly spaced from another and form a triangle on the color wheel.



F4486E



3F9C28



0099FE

Complementary

The Complementary color scheme is a pair of colors which are on the opposite of each other on the color wheel.



F4486E



48F4CE

Split Complementary

Split-complementary colors differ from the complementary color scheme. The scheme consists of three colors, the original color and two neighbors of the complement color.



00A2DD



F4486E



00A267

Square

The Square scheme is like the rectangle color scheme, but the four colors are evenly spaced on the color wheel.



F4486E



898F00



00A4A6



3386FF

Rectangle

The Rectangle color scheme consists of four colors that form a rectangle on the color wheel.



F4486E



CD7209



00A4A6



009DF7

Sweetspot

The Sweet Spot groups the original color and five complimentary colors.



F4486E



FFC9D5



CC48F4



806067



000000



808080

Same Dimension

The Same Dimension uses a secret algorithm to generate beautiful new colors.



F4486E



FF2656



F47648



7A6E71



BA0029



3B000D

Inverse Universe

The Inverse Universe completely reimagines the original color for something new.



F4486E



FF2656



48C6F4



7A6E71



BA0029



3B000D

Previews

White Background



This preview shows how the Hex color F4486E looks on a white background.

Color Contrast Check

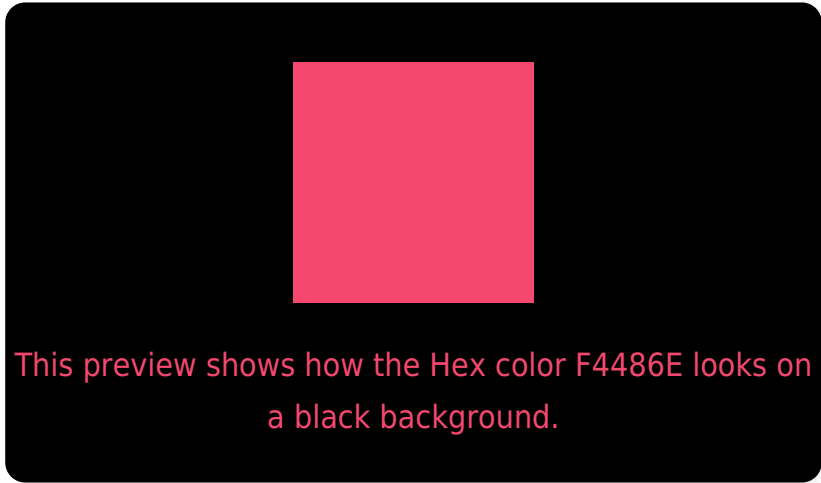
Large Text (above 18pt) WCAG AA ✓ Pass

Any Text WCAG AA × Fail

Large Text (above 18pt) WCAG AAA × Fail

Any Text WCAG AAA × Fail

Black Background



Color Contrast Check

Large Text (above 18pt) WCAG AA ✓ Pass

Any Text WCAG AA ✓ Pass

Large Text (above 18pt) WCAG AAA ✓ Pass

Any Text WCAG AAA × Fail

If you want to check with other color combinations, try the [Color Contrast Checker](#).

Hex F4486E Background



This preview shows how black text looks on a background with the Hex color F4486E.

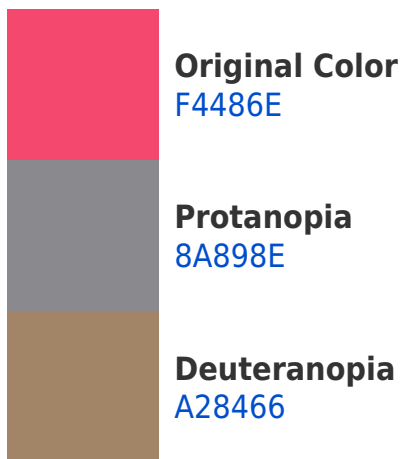


This preview shows how white text looks on a background with the Hex color F4486E.

Color Blindness Simulation

Color vision deficiency is a very complex topic, and I could not describe the different causes any better than Wikipedia does, so if you want to learn more, you should check out their [article about color blindness](#).

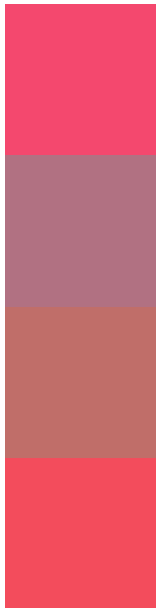
Dichromacy





Tritanopia
F34E52

Trichromacy



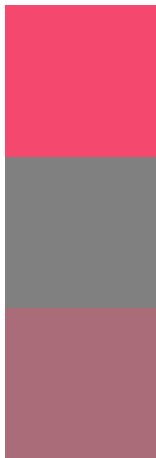
Original Color
F4486E

Protanomaly
B17182

Deuteranomaly
C06E69

Tritanomaly
F34C5C

Monochromacy



Original Color
F4486E

Achromatopsia
808080

Achromatomaly
AA6C79

CSS Examples

Text

The CSS property to change the color of the text to Hex F4486E is called "color". The color property can be set on classes, ids or directly on the HTML element.

This example shows how text in the color #F4486E looks like.

```
.text, #text, p{  
    color:#F4486E  
}
```

If you want to add a text shadow in that color use the text-shadow property, you can generate a text shadow directly with our [CSS Text Shadow Generator](#).

Here you see how black text with a 4 pixel #F4486E colored shadow looks like.

```
.shadow{ text-shadow: 4px 4px 2px #F4486E
}
```

Border

The CSS property to change the border of an element to Hex F4486E is called "border". The border property can be set on classes, ids or directly on the HTML element.

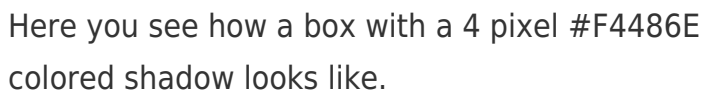
This example shows the color as border, it can be applied via the CSS property "border" or "border-color".

```
.border, #border, table{ border:4px solid
#F4486E }
```

If only the border color should be changed use the property `border-color`.

```
.border{ border-color:#F4486E }
```

If you want to add a box shadow in that color use:



Here you see how a box with a 4 pixel #F4486E colored shadow looks like.

```
.boxshadow{ -moz-box-shadow:4px 4px 4px  
4px #F4486E; -webkit-box-shadow:4px 4px  
4px 4px #F4486E; box-shadow:4px 4px 4px  
4px #F4486E }
```

Background

The CSS property to change the background color of an element to Hex F4486E is called "background". The background property can be set on classes, ids or directly on the HTML element.

```
.background, #background, body{  
background:#F4486E }
```

If only the background color should be changed can be used:

```
.background{ background-color:#F4486E }
```

This example shows the color as background, it is applied via the CSS property "background".

To optimize and compress your CSS code, you can use our [online CSS compressor and optimizer](#) based on csstidy. If you want to create a linear or radial gradient as background or border, check our [CSS Gradient Generator](#).

Hey! You found this booklet interesting? Support Converting Colors with the new Membership Option!

The pro membership hides all ads, plus gives you double the colors in the color bucket, and more awesome pro features!

[Learn more, Memberships starting at \\$2.50/m!](#)

**Follow me
on Twitter!**

@ConvertingColor