

# Converting Colors

Hex(F44E6F)

Have a look what the booklet for  
Hex(F44E6F) contains.

<b>Hex(F44E6F)</b> .....	3
<i><b>Conversions</b></i> .....	4
<i><b>Details</b></i> .....	6
<i><b>Harmonies</b></i> .....	11
<i><b>Previews</b></i> .....	23
<i><b>Color Blindness Simulation</b></i> .....	26
<i><b>CSS Examples</b></i> .....	29

# Color

**Hex(F44E6F)**

# Conversions

## Conversions Part 1

<b>Format</b>	<b>Color</b>
Hex	F44E6F
RGB	244, 78, 111
RGB Percent	96%, 31%, 44%
CMY	0.0431, 0.6941, 0.5647
CMYK	0.00, 0.68, 0.55, 0.04
HSL	348°, 88%, 63%
HSV	348°, 68%, 96%
XYZ	42.9019, 25.8296, 17.7634
YIQ	131.3960, 88.3430, 45.4550

# Conversions

## Conversions Part 2

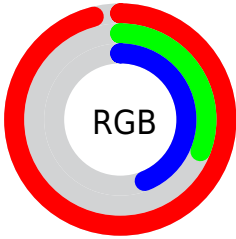
<b>Format</b>	<b>Color</b>
<b>R<sub>YB</sub></b>	244, 78, 111
Decimal	16010863
CIE <sub>Lab</sub>	57.87, 65.12, 18.09
CIE <sub>LCh</sub>	58, 67.584, 15.524
Yxy	25.8296, 0.4960, 0.2986
Android (android.graphics.Color)	4294200943 (0xFFFF44E6F)
YUV	131.3960, -10.0552, 98.7537
Hunter-Lab	50.8228, 61.7401, 14.8532

# Details

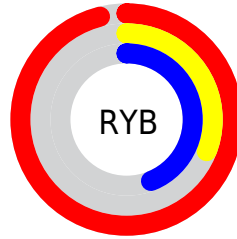
The Hex color **F44E6F** is a dark color, and the websafe version is hex **FF3366**. The color can be described as middle washed rose. A complement of this color would be **4EF4D3**, and the grayscale version is **838383**.

A 20% lighter version of the original color is **FF88A2**, and **B60040** is the 20% darker color. If you saturate the color by 10%, you get **F4365B**, and if you desaturate by 10%, it is **F46683**.

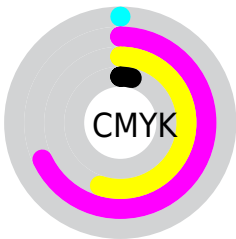
# Distribution



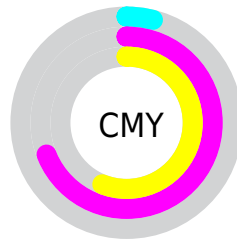
- Red (96%)
- Green (31%)
- Blue (44%)



- Red (96%)
- Yellow (31%)
- Blue (44%)



- Cyan (0%)
- Magenta (68%)
- Yellow (55%)
- Black (4%)



- Cyan (4%)
- Magenta (69%)
- Yellow (56%)

# Brightness & Saturation Gradients

These gradients show how the Hex color F44E6F changes by changing the brightness by 10 percent. The first figure shows a shift by +10% for each color and the second figure -10%.

Similar to the brightness gradients but the following saturation gradients show a change of the Hex color F44E6F by changing the saturation by 10% instead.



 F44E6F

 F44E6F

FFFFFF

 D52E57

 FF88A2

 B60040

 FFA5BD

 97002A

 FFC2D9

 780017

 FFE0F6

 5B0001

FFFEFF

 3E0003

 1A0001

 000000

 F44E6F

 F44E6F

 F4365B

 F46683

 F41D48

 F47F96

 F40534

 F497AA

 F40031

 F4B0BD

 F4C8D1

 F4E0E4

 F4F9F8

 F4FFFF

# Harmonies

## Analogous

The Analogous color harmony consists of three colors that are next to each other on the color wheel.



E652AA



F44E6F



E46438

# Triad

The Triadic color harmony groups three colors that are evenly spaced from another and form a triangle on the color wheel.



F44E6F



429E30



009AFE

# Complementary

The Complementary color scheme is a pair of colors which are on the opposite of each other on the color wheel.



F44E6F



4EF4D3

# Split Complementary

Split-complementary colors differ from the complementary color scheme. The scheme consists of three colors, the original color and two neighbors of the complement color.



00A3DF



F44E6F



00A46B

# Square

The Square scheme is like the rectangle color scheme, but the four colors are evenly spaced on the color wheel.



F44E6F



8A9200



00A6A9



4487FE

# Rectangle

The Rectangle color scheme consists of four colors that form a rectangle on the color wheel.



F44E6F



CD7612



00A6A9



009EF7



# Sweetspot

The Sweet Spot groups the original color and five complimentary colors.



F44E6F



FFCCD6



D34EF4



806167



000000



808080



# Same Dimension

The Same Dimension uses a secret algorithm to generate beautiful new colors.



F44E6F



FF2E57



F4804E



7A6E71



BA0025



3B000C



# Inverse Universe

The Inverse Universe completely reimagines the original color for something new.



F44E6F



FF2E57



4EC2F4



7A6E71



BA0025



3B000C



# Previews

## White Background



This preview shows how the Hex color F44E6F looks on a white background.

## Color Contrast Check

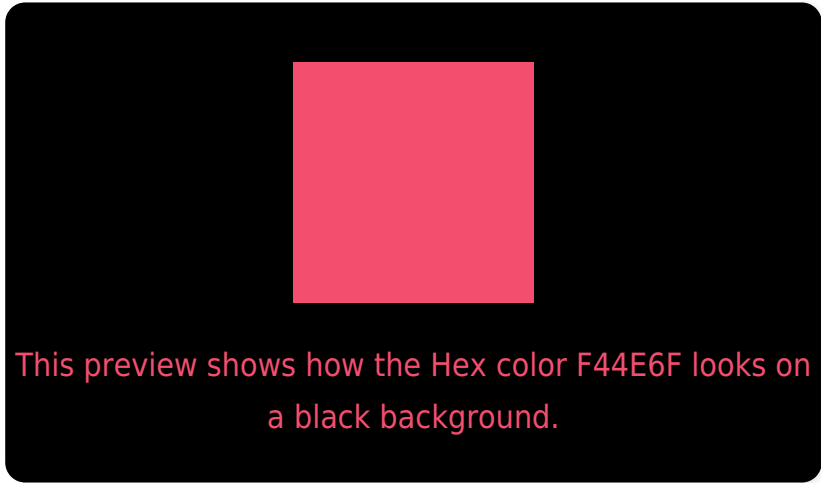
Large Text (above 18pt) WCAG AA ✓ Pass

Any Text WCAG AA × Fail

Large Text (above 18pt) WCAG AAA × Fail

Any Text WCAG AAA × Fail

# Black Background



## Color Contrast Check

Large Text (above 18pt) WCAG AA ✓ Pass

Any Text WCAG AA ✓ Pass

Large Text (above 18pt) WCAG AAA ✓ Pass

Any Text WCAG AAA × Fail

If you want to check with other color combinations, try the [Color Contrast Checker](#).



## Hex F44E6F Background



This preview shows how black text looks on a background with the Hex color F44E6F.

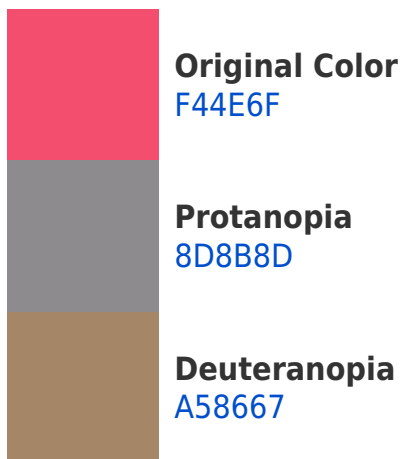


This preview shows how white text looks on a background with the Hex color F44E6F.

# Color Blindness Simulation

Color vision deficiency is a very complex topic, and I could not describe the different causes any better than Wikipedia does, so if you want to learn more, you should check out their [article about color blindness](#).

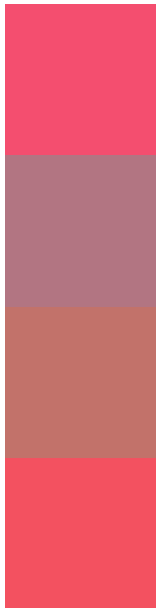
## Dichromacy





**Tritanopia**  
F35357

# Trichromacy



**Original Color**  
F44E6F

**Protanomaly**  
B27582

**Deuteranomaly**  
C2726A

**Tritanomaly**  
F35160

# Monochromacy



**Original Color**  
F44E6F

**Achromatopsia**  
838383

**Achromatomaly**  
AC707C

# CSS Examples

## Text

The CSS property to change the color of the text to Hex F44E6F is called "color". The color property can be set on classes, ids or directly on the HTML element.

This example shows how text in the color #F44E6F looks like.

```
.text, #text, p{  
  color:#F44E6F  
}
```

If you want to add a text shadow in that color use the text-shadow property, you can generate a text shadow directly with our [CSS Text Shadow Generator](#).

Here you see how black text with a 4 pixel #F44E6F colored shadow looks like.

```
.shadow{ text-shadow: 4px 4px 2px #F44E6F
}
```

## Border

The CSS property to change the border of an element to Hex F44E6F is called "border". The border property can be set on classes, ids or directly on the HTML element.

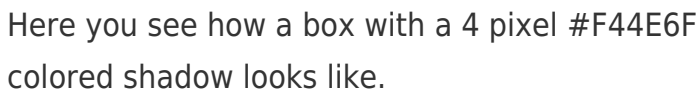
This example shows the color as border, it can be applied via the CSS property "border" or "border-color".

```
.border, #border, table{ border:4px solid
#F44E6F }
```

If only the border color should be changed use the property `border-color`.

```
.border{ border-color:#F44E6F }
```

If you want to add a box shadow in that color use:



Here you see how a box with a 4 pixel #F44E6F colored shadow looks like.

```
.boxshadow{ -moz-box-shadow:4px 4px 4px  
4px #F44E6F; -webkit-box-shadow:4px 4px  
4px 4px #F44E6F; box-shadow:4px 4px 4px  
4px #F44E6F }
```

# Background

The CSS property to change the background color of an element to Hex F44E6F is called "background". The background property can be set on classes, ids or directly on the HTML element.

```
.background, #background, body{  
background:#F44E6F }
```

If only the background color should be changed can be used:

```
.background{ background-color:#F44E6F }
```

This example shows the color as background, it is applied via the CSS property "background".

To optimize and compress your CSS code, you can use our [online CSS compressor and optimizer](#) based on csstidy. If you want to create a linear or radial gradient as background or border, check our [CSS Gradient Generator](#).



Hey! You found this booklet interesting? Support Converting Colors with the new Membership Option!

The pro membership hides all ads, plus gives you double the colors in the color bucket, and more awesome pro features!

**[Learn more, Memberships starting at \\$2.50/m!](#)**

**Follow me  
on Twitter!**

@ConvertingColor