

# Converting Colors

Hex(F45E7B)

Have a look what the booklet for  
Hex(F45E7B) contains.

<b>Hex(F45E7B)</b> .....	3
<b><i>Conversions</i></b> .....	4
<b><i>Details</i></b> .....	6
<b><i>Harmonies</i></b> .....	11
<b><i>Previews</i></b> .....	23
<b><i>Color Blindness Simulation</i></b> .....	26
<b><i>CSS Examples</i></b> .....	29

# **Color**

**Hex(F45E7B)**

# Conversions

## Conversions Part 1

Format	Color
Hex	F45E7B
RGB	244, 94, 123
RGB Percent	96%, 37%, 48%
CMY	0.0431, 0.6314, 0.5176
CMYK	0.00, 0.61, 0.50, 0.04
HSL	348°, 87%, 66%
HSV	348°, 61%, 96%
XYZ	44.8861, 28.6686, 21.9067
YIQ	142.1560, 80.0910, 40.8190

# Conversions

## Conversions Part 2

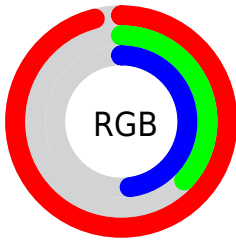
<b>Format</b>	<b>Color</b>
<b>R<sub>YB</sub></b>	244, 94, 123
Decimal	16014971
CIE <sub>Lab</sub>	60.49, 59.68, 14.68
CIE <sub>LCh</sub>	60, 61.459, 13.822
Yxy	28.6686, 0.4702, 0.3003
Android (android.graphics.Color)	4294205051 (0xFFFF45E7B)
YUV	142.1560, -9.4439, 89.3172
Hunter-Lab	53.5430, 55.9394, 13.2221

# Details

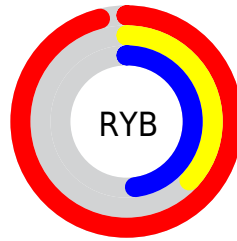
The Hex color **F45E7B** is a light color, and the websafe version is hex **FF6699**. The color can be described as light muted rose. A complement of this color would be **5EF4D7**, and the grayscale version is **8E8E8E**.

A 20% lighter version of the original color is **FF96AF**, and **B6204B** is the 20% darker color. If you saturate the color by 10%, you get **F44667**, and if you desaturate by 10%, it is **F4768F**.

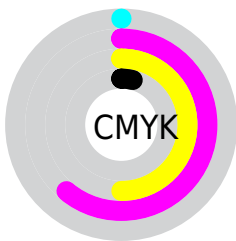
# Distribution



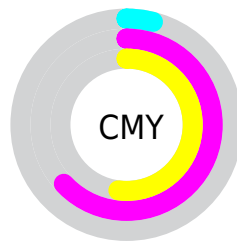
- Red (96%)
- Green (37%)
- Blue (48%)



- Red (96%)
- Yellow (37%)
- Blue (48%)



- Cyan (0%)
- Magenta (61%)
- Yellow (50%)
- Black (4%)



- Cyan (4%)
- Magenta (63%)
- Yellow (52%)

# Brightness & Saturation Gradients

These gradients show how the Hex color F45E7B changes by changing the brightness by 10 percent. The first figure shows a shift by +10% for each color and the second figure -10%.

Similar to the brightness gradients but the following saturation gradients show a change of the Hex color F45E7B by changing the saturation by 10% instead.



 F45E7B

 F45E7B

FFFFFF

 D54162

 FF96AF

 B6204B

 FFB3CB

 980034

 FFD0E7

 7A0020

 FFEDFF

 5D0008

 420003

 200001

 000000

 F45E7B

 F45E7B

 F44667

 F4768F

 F42D54

 F48FA2

 F41540

 F4A7B6

 F4002F

 F4C0CA

 F4D8DD

 F4F0F1

 F4FFFF

# Harmonies

## Analogous

The Analogous color harmony consists of three colors that are next to each other on the color wheel.



E563B1



F45E7B



E76E49

# Triad

The Triadic color harmony groups three colors that are evenly spaced from another and form a triangle on the color wheel.



F45E7B



58A33E



00A0FA

# Complementary

The Complementary color scheme is a pair of colors which are on the opposite of each other on the color wheel.



F45E7B



5EF4D7

# Split Complementary

Split-complementary colors differ from the complementary color scheme. The scheme consists of three colors, the original color and two neighbors of the complement color.



00A9DC



F45E7B



00AA72

# Square

The Square scheme is like the rectangle color scheme, but the four colors are evenly spaced on the color wheel.



F45E7B



969718



00ACAA



548FFC

# Rectangle

The Rectangle color scheme consists of four colors that form a rectangle on the color wheel.



F45E7B



D37D2D



00ACAA



00A4F3



# Sweetspot

The Sweet Spot groups the original color and five complimentary colors.



F45E7B



FFD1DA



D65EF4



806369



000000



808080



# Same Dimension

The Same Dimension uses a secret algorithm to generate beautiful new colors.



F45E7B



FF4267



F48B5E



7A6E71



BA0024



3B000B



# Inverse Universe

The Inverse Universe completely reimagines the original color for something new.



F45E7B



FF4267



5EC7F4



7A6E71



BA0024



3B000B



# Previews

## White Background



This preview shows how the Hex color F45E7B looks on a white background.

## Color Contrast Check

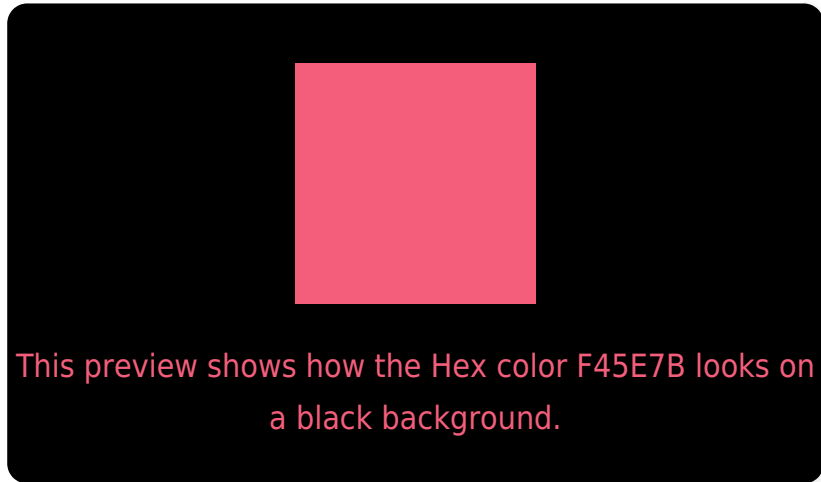
Large Text (above 18pt) WCAG AA ✓ Pass

Any Text WCAG AA ✗ Fail

Large Text (above 18pt) WCAG AAA ✗ Fail

Any Text WCAG AAA ✗ Fail

# Black Background



## Color Contrast Check

Large Text (above 18pt) WCAG AA ✓ Pass

Any Text WCAG AA ✓ Pass

Large Text (above 18pt) WCAG AAA ✓ Pass

Any Text WCAG AAA × Fail

If you want to check with other color combinations, try the [Color Contrast Checker](#).



## Hex F45E7B Background



This preview shows how black text looks on a background with the Hex color F45E7B.

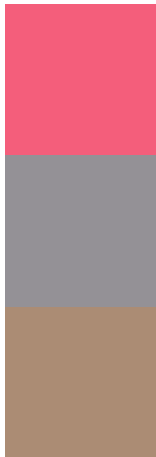


This preview shows how white text looks on a background with the Hex color F45E7B.

# Color Blindness Simulation

Color vision deficiency is a very complex topic, and I could not describe the different causes any better than Wikipedia does, so if you want to learn more, you should check out their [article about color blindness](#).


## Dichromacy



**Original Color**  
F45E7B

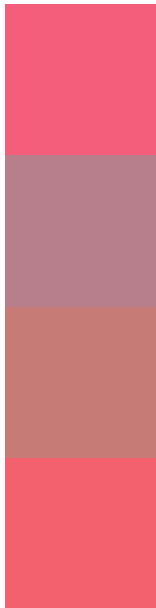
**Protanopia**  
949196

**Deuteranopia**  
AB8C74



**Tritanopia**  
F36268

# Trichromacy



**Original Color**  
F45E7B

**Protanomaly**  
B77E8C

**Deuteranomaly**  
C67B77

**Tritanomaly**  
F3616F

# Monochromacy



**Original Color**  
F45E7B

**Achromatopsia**  
8E8E8E

**Achromatomaly**  
B37D87

# CSS Examples

## Text

The CSS property to change the color of the text to Hex F45E7B is called "color". The color property can be set on classes, ids or directly on the HTML element.

This example shows how text in the color #F45E7B looks like.

```
.text, #text, p{  
  color:#F45E7B  
}
```

If you want to add a text shadow in that color use the text-shadow property, you can generate a text shadow directly with our [CSS Text Shadow Generator](#).

Here you see how black text with a 4 pixel #F45E7B colored shadow looks like.

```
.shadow{ text-shadow: 4px 4px 2px #F45E7B
}
```

## Border

The CSS property to change the border of an element to Hex F45E7B is called "border". The border property can be set on classes, ids or directly on the HTML element.

This example shows the color as border, it can be applied via the CSS property "border" or "border-color".

```
.border, #border, table{ border:4px solid
#F45E7B }
```

If only the border color should be changed use the property `border-color`.

```
.border{ border-color:#F45E7B }
```

If you want to add a box shadow in that color use:

Here you see how a box with a 4 pixel #F45E7B colored shadow looks like.

```
.boxshadow{ -moz-box-shadow:4px 4px 4px  
4px #F45E7B; -webkit-box-shadow:4px 4px  
4px 4px #F45E7B; box-shadow:4px 4px 4px  
4px #F45E7B }
```

# Background

The CSS property to change the background color of an element to Hex F45E7B is called "background". The background property can be set on classes, ids or directly on the HTML element.

```
.background, #background, body{  
background:#F45E7B }
```

If only the background color should be changed can be used:

```
.background{ background-color:#F45E7B }
```

This example shows the color as background, it is applied via the CSS property "background".

To optimize and compress your CSS code, you can use our [online CSS compressor and optimizer](#) based on csstidy. If you want to create a linear or radial gradient as background or border, check our [CSS Gradient Generator](#).



Hey! You found this booklet interesting? Support Converting Colors with the new Membership Option!

The pro membership hides all ads, plus gives you double the colors in the color bucket, and more awesome pro features!

**[Learn more, Memberships starting at \\$2.50/m!](#)**

**Follow me  
on Twitter!**

@ConvertingColor