

Converting Colors

Hex(F46586)

Have a look what the booklet for
Hex(F46586) contains.

Hex(F46586)	3
<i>Conversions</i>	4
<i>Details</i>	6
<i>Harmonies</i>	11
<i>Previews</i>	23
<i>Color Blindness Simulation</i>	26
<i>CSS Examples</i>	29

Color

Hex(F46586)

Conversions

Conversions Part 1

Format	Color
Hex	F46586
RGB	244, 101, 134
RGB Percent	96%, 40%, 53%
CMY	0.0431, 0.6039, 0.4745
CMYK	0.00, 0.59, 0.45, 0.04
HSL	346°, 87%, 68%
HSV	346°, 59%, 96%
XYZ	46.2650, 30.2617, 25.9569
YIQ	147.5190, 74.6350, 40.5790

Conversions

Conversions Part 2

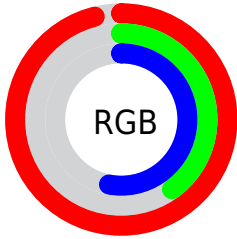
Format	Color
R _Y B	244, 101, 134
Decimal	16016774
CIE Lab	61.88, 57.63, 10.26
CIE LCh	62, 58.536, 10.098
Yxy	30.2617, 0.4514, 0.2953
Android (android.graphics.Color)	4294206854 (0xFFFF46586)
YUV	147.5190, -6.6649, 84.6138
Hunter-Lab	55.0106, 53.8533, 10.5313

Details

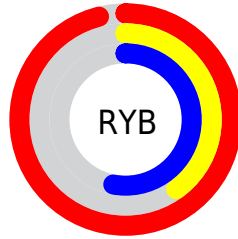
The Hex color **F46586** is a light color, and the websafe version is hex **FF6699**. A complement of this color would be **65F4D3**, and the grayscale version is **949494**.

A 20% lighter version of the original color is **FF9DBB**, and **B72B55** is the 20% darker color. If you saturate the color by 10%, you get **F44D73**, and if you desaturate by 10%, it is **F47D99**.

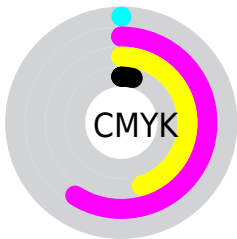
Distribution



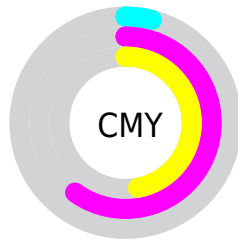
- Red (96%)
- Green (40%)
- Blue (53%)



- Red (96%)
- Yellow (40%)
- Blue (53%)



- Cyan (0%)
- Magenta (59%)
- Yellow (45%)
- Black (4%)



- Cyan (4%)
- Magenta (60%)
- Yellow (47%)

Brightness & Saturation Gradients

These gradients show how the Hex color F46586 changes by changing the brightness by 10 percent. The first figure shows a shift by +10% for each color and the second figure -10%.

Similar to the brightness gradients but the following saturation gradients show a change of the Hex color F46586 by changing the saturation by 10% instead.

 F46586

 F46586

FFFFFF

 D5496D

 FF9DBB

 B72B55

 FFB9D7

 99003E

 FFD6F3

 7C0028

 FFF4FF

 5F0014

 440002

 240001

 000000

 F46586

 F46586

 F44D73

 F47D99

 F43460

 F496AC

 F41C4E

 F4AEBE

 F4033B

 F4C7D1

 F40038

 F4DFE4

 F4F7F7

 F4FFFF

Harmonies

Analogous

The Analogous color harmony consists of three colors that are next to each other on the color wheel.



E16CBA



F46586



EB7255

Triad

The Triadic color harmony groups three colors that are evenly spaced from another and form a triangle on the color wheel.



F46586



68A541



00A5F7

Complementary

The Complementary color scheme is a pair of colors which are on the opposite of each other on the color wheel.



F46586



65F4D3

Split Complementary

Split-complementary colors differ from the complementary color scheme. The scheme consists of three colors, the original color and two neighbors of the complement color.



00ACD7



F46586



00AC70

Square

The Square scheme is like the rectangle color scheme, but the four colors are evenly spaced on the color wheel.



F46586



A09924



00AFA6



4E95FC

Rectangle

The Rectangle color scheme consists of four colors that form a rectangle on the color wheel.



F46586



D97F3A



00AFA6



00A8EF

Sweetspot

The Sweet Spot groups the original color and five complimentary colors.



F46586



FFD1DC



D365F4



80636A



000000



808080

Same Dimension

The Same Dimension uses a secret algorithm to generate beautiful new colors.



F46586



FF4D76



F48B65



7A6E71



BA002B



3B000E

Inverse Universe

The Inverse Universe completely reimagines the original color for something new.



F46586



FF4D76



65CEF4



7A6E71



BA002B



3B000E

Previews

White Background



This preview shows how the Hex color F46586 looks on a white background.

Color Contrast Check

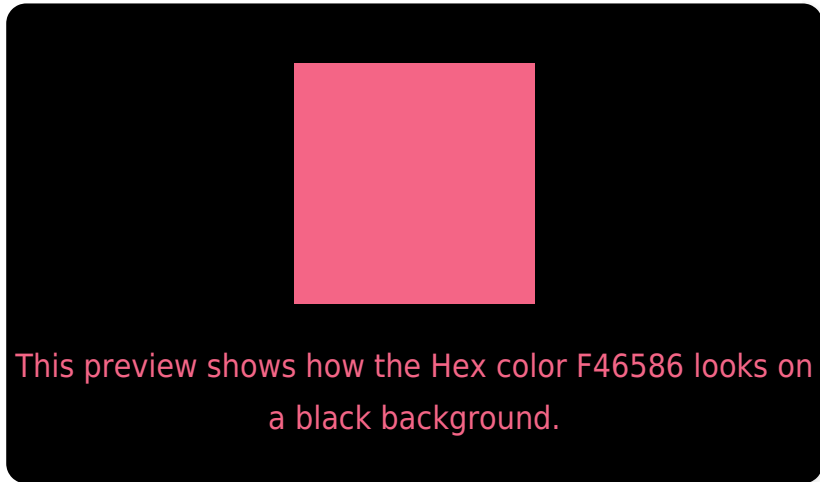
Large Text (above 18pt) WCAG AA × Fail

Any Text WCAG AA × Fail

Large Text (above 18pt) WCAG AAA × Fail

Any Text WCAG AAA × Fail

Black Background



Color Contrast Check

Large Text (above 18pt) WCAG AA ✓ Pass

Any Text WCAG AA ✓ Pass

Large Text (above 18pt) WCAG AAA ✓ Pass

Any Text WCAG AAA ✓ Pass

If you want to check with other color combinations, try the [Color Contrast Checker](#).

Hex F46586 Background



This preview shows how black text looks on a background with the Hex color F46586.

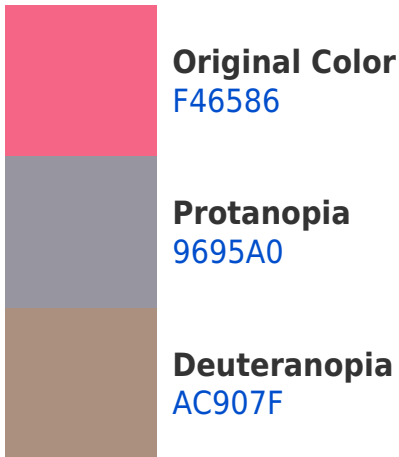


This preview shows how white text looks on a background with the Hex color F46586.

Color Blindness Simulation

Color vision deficiency is a very complex topic, and I could not describe the different causes any better than Wikipedia does, so if you want to learn more, you should check out their [article about color blindness](#).

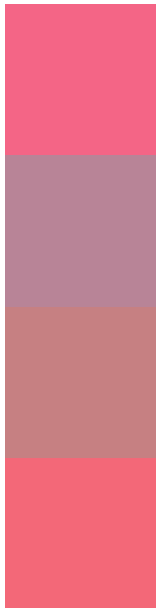
Dichromacy





Tritanopia
F26970

Trichromacy



Original Color
F46586

Protanomaly
B88497

Deuteranomaly
C68082

Tritanomaly
F36878

Monochromacy



Original Color
F46586

Achromatopsia
949494

Achromatomaly
B7838F

CSS Examples

Text

The CSS property to change the color of the text to Hex F46586 is called "color". The color property can be set on classes, ids or directly on the HTML element.

This example shows how text in the color #F46586 looks like.

```
.text, #text, p{  
    color:#F46586  
}
```

If you want to add a text shadow in that color use the text-shadow property, you can generate a text shadow directly with our [CSS Text Shadow Generator](#).

Here you see how black text with a 4 pixel #F46586 colored shadow looks like.

```
.shadow{ text-shadow: 4px 4px 2px #F46586
}
```

Border

The CSS property to change the border of an element to Hex F46586 is called "border". The border property can be set on classes, ids or directly on the HTML element.

This example shows the color as border, it can be applied via the CSS property "border" or "border-color".

```
.border, #border, table{ border:4px solid
#F46586 }
```

If only the border color should be changed use the property `border-color`.

```
.border{ border-color:#F46586 }
```

If you want to add a box shadow in that color use:

Here you see how a box with a 4 pixel #F46586 colored shadow looks like.

```
.boxshadow{ -moz-box-shadow:4px 4px 4px  
4px #F46586; -webkit-box-shadow:4px 4px  
4px 4px #F46586; box-shadow:4px 4px 4px  
4px #F46586 }
```

Background

The CSS property to change the background color of an element to Hex F46586 is called "background". The background property can be set on classes, ids or directly on the HTML element.

```
.background, #background, body{  
background:#F46586 }
```

If only the background color should be changed can be used:

```
.background{ background-color:#F46586 }
```

This example shows the color as background, it is applied via the CSS property "background".

To optimize and compress your CSS code, you can use our [online CSS compressor and optimizer](#) based on csstidy. If you want to create a linear or radial gradient as background or border, check our [CSS Gradient Generator](#).

Hey! You found this booklet interesting? Support Converting Colors with the new Membership Option!

The pro membership hides all ads, plus gives you double the colors in the color bucket, and more awesome pro features!

[Learn more, Memberships starting at \\$2.50/m!](#)

**Follow me
on Twitter!**

@ConvertingColor