

Converting Colors

Hex(F46980)

Have a look what the booklet for
Hex(F46980) contains.

Hex(F46980)	3
<i>Conversions</i>	4
<i>Details</i>	6
<i>Harmonies</i>	11
<i>Previews</i>	23
<i>Color Blindness Simulation</i>	26
<i>CSS Examples</i>	29

Color

Hex(F46980)

Conversions

Conversions Part 1

Format	Color
Hex	F46980
RGB	244, 105, 128
RGB Percent	96%, 41%, 50%
CMY	0.0431, 0.5882, 0.4980
CMYK	0.00, 0.57, 0.48, 0.04
HSL	350°, 86%, 68%
HSV	350°, 57%, 96%
XYZ	46.2561, 30.8948, 23.9474
YIQ	149.1830, 75.4610, 36.6210

Conversions

Conversions Part 2

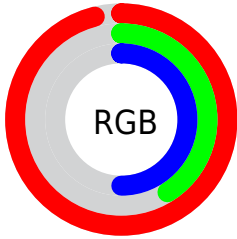
Format	Color
RYB	244, 105, 128
Decimal	16017792
CIELab	62.42, 55.28, 14.48
CIElCh	62, 57.144, 14.678
Yxy	30.8948, 0.4575, 0.3056
Android (android.graphics.Color)	4294207872 (0xFFFF46980)
YUV	149.1830, -10.4432, 83.1545
Hunter-Lab	55.5831, 51.2769, 13.3636

Details

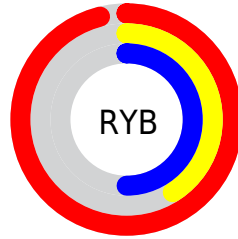
The Hex color **F46980** is a light color, and the websafe version is hex **FF6699**. A complement of this color would be **69F4DD**, and the grayscale version is **959595**.

A 20% lighter version of the original color is **FFA1B5**, and **B7304F** is the 20% darker color. If you saturate the color by 10%, you get **F4516C**, and if you desaturate by 10%, it is **F48194**.

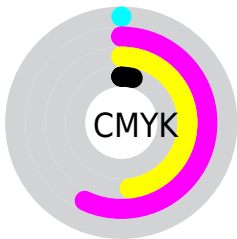
Distribution



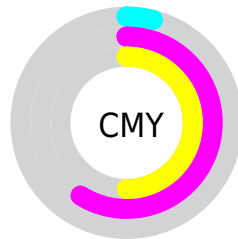
- Red (96%)
- Green (41%)
- Blue (50%)



- Red (96%)
- Yellow (41%)
- Blue (50%)



- Cyan (0%)
- Magenta (57%)
- Yellow (48%)
- Black (4%)



- Cyan (4%)
- Magenta (59%)
- Yellow (50%)

Brightness & Saturation Gradients

These gradients show how the Hex color F46980 changes by changing the brightness by 10 percent. The first figure shows a shift by +10% for each color and the second figure -10%.

Similar to the brightness gradients but the following saturation gradients show a change of the Hex color F46980 by changing the saturation by 10% instead.

 F46980

 F46980

FFFFFF

 D54D67

 FFA1B5

 B7304F

 FFBDD0

 990938

 FFDAEC

 7C0023

 FFF7FF

 5F000E

 430002

 240001

 000000

 F46980

 F46980

 F4516C

 F48194

 F43857

 F49AA9

 F42043

 F4B2BD

 F4072F

 F4CBD1

 F40028

 F4E3E6

 F4FBFA

 F4FFFF

Harmonies

Analogous

The Analogous color harmony consists of three colors that are next to each other on the color wheel.



E66CB3



F46980



E87752

Triad

The Triadic color harmony groups three colors that are evenly spaced from another and form a triangle on the color wheel.



F46980



61A84B



00A4F8

Complementary

The Complementary color scheme is a pair of colors which are on the opposite of each other on the color wheel.



F46980



69F4DD

Split Complementary

Split-complementary colors differ from the complementary color scheme. The scheme consists of three colors, the original color and two neighbors of the complement color.



00AADD



F46980



00AE7A

Square

The Square scheme is like the rectangle color scheme, but the four colors are evenly spaced on the color wheel.



F46980



9A9C2C



00B0AF



6794F9

Rectangle

The Rectangle color scheme consists of four colors that form a rectangle on the color wheel.



F46980



D48439



00B0AF



00A8F2

Sweetspot

The Sweet Spot groups the original color and five complimentary colors.



F46980



FFD4DB



DD69F4



80666A



000000



808080

Same Dimension

The Same Dimension uses a secret algorithm to generate beautiful new colors.



F46980



FF526E



F49769



7A6E70



BA001F



3B000A

Inverse Universe

The Inverse Universe completely reimagines the original color for something new.



F46980



FF526E



69C6F4



7A6E70



BA001F



3B000A

Previews

White Background



This preview shows how the Hex color F46980 looks on a white background.

Color Contrast Check

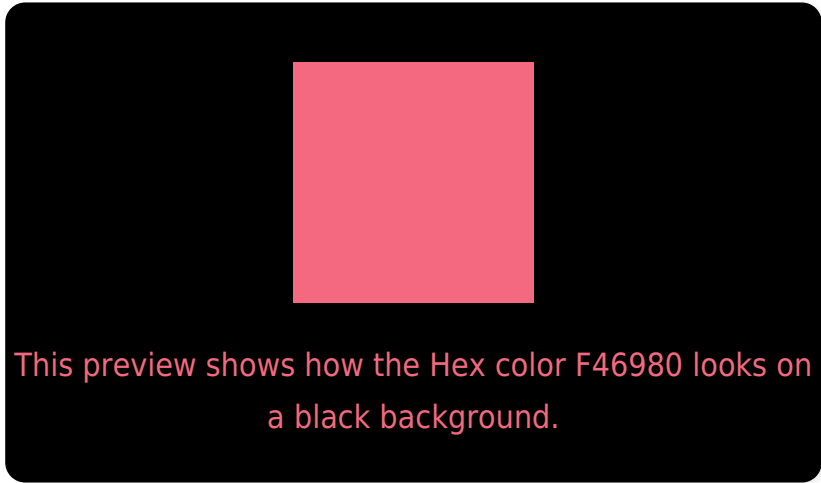
Large Text (above 18pt) WCAG AA × Fail

Any Text WCAG AA × Fail

Large Text (above 18pt) WCAG AAA × Fail

Any Text WCAG AAA × Fail

Black Background



Color Contrast Check

Large Text (above 18pt) WCAG AA ✓ Pass

Any Text WCAG AA ✓ Pass

Large Text (above 18pt) WCAG AAA ✓ Pass

Any Text WCAG AAA ✓ Pass

If you want to check with other color combinations, try the [Color Contrast Checker](#).

Hex F46980 Background



This preview shows how black text looks on a background with the Hex color F46980.

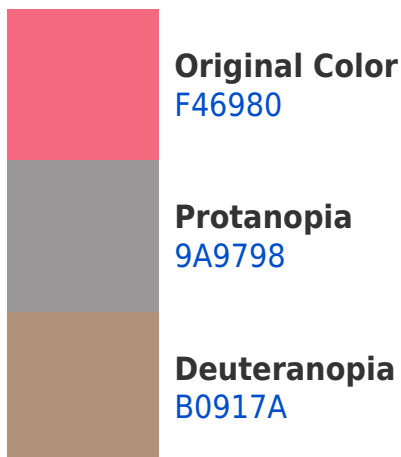



This preview shows how white text looks on a background with the Hex color F46980.

Color Blindness Simulation

Color vision deficiency is a very complex topic, and I could not describe the different causes any better than Wikipedia does, so if you want to learn more, you should check out their [article about color blindness](#).

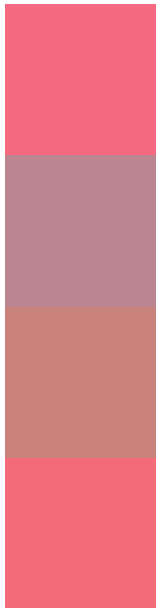
Dichromacy





Tritanopia
F36B73

Trichromacy



Original Color
F46980

Protanomaly
BB868F

Deuteranomaly
C9827C

Tritanomaly
F36A78

Monochromacy



Original Color
F46980

Achromatopsia
959595

Achromatomaly
B8858D

CSS Examples

Text

The CSS property to change the color of the text to Hex F46980 is called "color". The color property can be set on classes, ids or directly on the HTML element.

This example shows how text in the color #F46980 looks like.

```
.text, #text, p{  
    color:#F46980  
}
```

If you want to add a text shadow in that color use the text-shadow property, you can generate a text shadow directly with our [CSS Text Shadow Generator](#).

Here you see how black text with a 4 pixel #F46980 colored shadow looks like.

```
.shadow{ text-shadow: 4px 4px 2px #F46980
}
```

Border

The CSS property to change the border of an element to Hex F46980 is called "border". The border property can be set on classes, ids or directly on the HTML element.

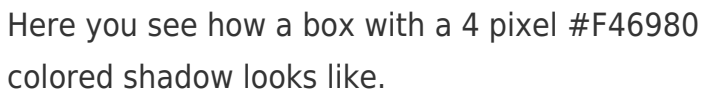
This example shows the color as border, it can be applied via the CSS property "border" or "border-color".

```
.border, #border, table{ border:4px solid
#F46980 }
```

If only the border color should be changed use the property `border-color`.

```
.border{ border-color:#F46980 }
```

If you want to add a box shadow in that color use:



Here you see how a box with a 4 pixel #F46980 colored shadow looks like.

```
.boxshadow{ -moz-box-shadow:4px 4px 4px  
4px #F46980; -webkit-box-shadow:4px 4px  
4px 4px #F46980; box-shadow:4px 4px 4px  
4px #F46980 }
```

Background

The CSS property to change the background color of an element to Hex F46980 is called "background". The background property can be set on classes, ids or directly on the HTML element.

```
.background, #background, body{  
background:#F46980 }
```

If only the background color should be changed can be used:

```
.background{ background-color:#F46980 }
```

This example shows the color as background, it is applied via the CSS property "background".

To optimize and compress your CSS code, you can use our [online CSS compressor and optimizer](#) based on csstidy. If you want to create a linear or radial gradient as background or border, check our [CSS Gradient Generator](#).

Hey! You found this booklet interesting? Support Converting Colors with the new Membership Option!

The pro membership hides all ads, plus gives you double the colors in the color bucket, and more awesome pro features!

[Learn more, Memberships starting at \\$2.50/m!](#)

**Follow me
on Twitter!**

@ConvertingColor