

Converting Colors

Hex(F47B6C)

Have a look what the booklet for
Hex(F47B6C) contains.

Hex(F47B6C)	3
<i>Conversions</i>	4
<i>Details</i>	6
<i>Harmonies</i>	11
<i>Previews</i>	23
<i>Color Blindness Simulation</i>	26
<i>CSS Examples</i>	29

Color

Hex(F47B6C)

Conversions

Conversions Part 1

Format	Color
Hex	F47B6C
RGB	244, 123, 108
RGB Percent	96%, 48%, 42%
CMY	0.0431, 0.5176, 0.5765
CMYK	0.00, 0.50, 0.56, 0.04
HSL	7°, 86%, 69%
HSV	7°, 56%, 96%
XYZ	47.0980, 34.4817, 18.3607
YIQ	157.4690, 76.9310, 20.9870

Conversions

Conversions Part 2

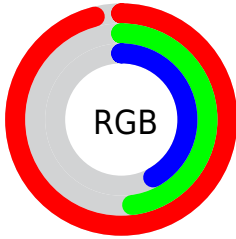
Format	Color
RYB	244, 125, 108
Decimal	16022380
CIELab	65.34, 45.05, 29.75
CIElCh	65, 53.984, 33.445
Yxy	34.4817, 0.4713, 0.3450
Android (android.graphics.Color)	4294212460 (0xFFFF47B6C)
YUV	157.4690, -24.3882, 75.8877
Hunter-Lab	58.7211, 40.4060, 22.5663

Details

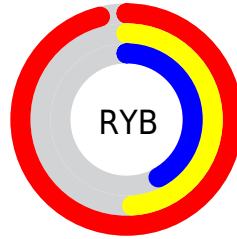
The Hex color **F47B6C** is a light color, and the websafe version is hex **FF6666**. A complement of this color would be **6CE5F4**, and the grayscale version is **9E9E9E**.

A 20% lighter version of the original color is **FFB2A0**, and **B7463C** is the 20% darker color. If you saturate the color by 10%, you get **F46554**, and if you desaturate by 10%, it is **F49184**.

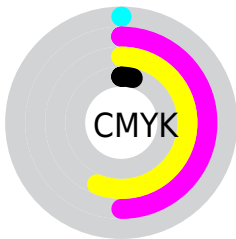
Distribution



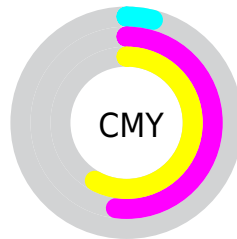
- Red (96%)
- Green (48%)
- Blue (42%)



- Red (96%)
- Yellow (49%)
- Blue (42%)



- Cyan (0%)
- Magenta (50%)
- Yellow (56%)
- Black (4%)



- Cyan (4%)
- Magenta (52%)
- Yellow (58%)

Brightness & Saturation Gradients

These gradients show how the Hex color F47B6C changes by changing the brightness by 10 percent. The first figure shows a shift by +10% for each color and the second figure -10%.

Similar to the brightness gradients but the following saturation gradients show a change of the Hex color F47B6C by changing the saturation by 10% instead.

 F47B6C

 F47B6C

FFFFFF

 D56054

 FF2A0

 B7463C

 FFCEBB

 992B26

 FFEBD6

 7B0B11

 FFFFF3

 5F0000

 420000

 260001

 000000

 F47B6C

 F47B6C

 F46554

 F49184

 F4503B

 F4A69D

 F43A23

 F4BCB5

 F4240A

 F4D2CE

 F41B00

 F4E8E6

 F4DFDE

 F4FFFF

Harmonies

Analogous

The Analogous color harmony consists of three colors that are next to each other on the color wheel.



F7749B



F47B6C



DC8C47

Triad

The Triadic color harmony groups three colors that are evenly spaced from another and form a triangle on the color wheel.



F47B6C



3CB371



48A2FF

Complementary

The Complementary color scheme is a pair of colors which are on the opposite of each other on the color wheel.



F47B6C



6CE5F4

Split Complementary

Split-complementary colors differ from the complementary color scheme. The scheme consists of three colors, the original color and two neighbors of the complement color.



00AFF4



F47B6C



00B7A3

Square

The Square scheme is like the rectangle color scheme, but the four colors are evenly spaced on the color wheel.



F47B6C



83AB4A



00B5D3



A990F0

Rectangle

The Rectangle color scheme consists of four colors that form a rectangle on the color wheel.



F47B6C



C3983A



00B5D3



00A7FE

Sweetspot

The Sweet Spot groups the original color and five complimentary colors.



F47B6C



FFD8D4



F46CE6



806966



000000



808080

Same Dimension

The Same Dimension uses a secret algorithm to generate beautiful new colors.



F47B6C



FF6754



F4BE6C



7A706E



BA1500



3B0600

Inverse Universe

The Inverse Universe completely reimagines the original color for something new.



6CE5F4



54ECFF



6CA2F4



6E797A



00A6BA



00343B

Previews

White Background



This preview shows how the Hex color F47B6C looks on a white background.

Color Contrast Check

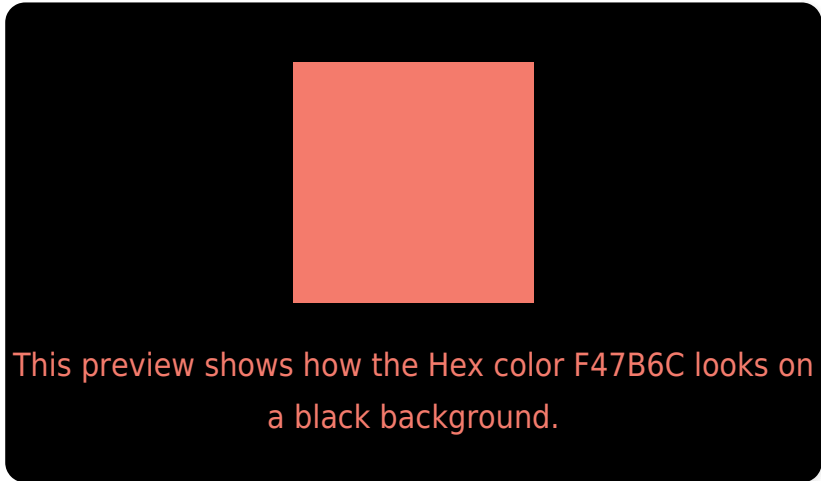
Large Text (above 18pt) WCAG AA × Fail

Any Text WCAG AA × Fail

Large Text (above 18pt) WCAG AAA × Fail

Any Text WCAG AAA × Fail

Black Background



Color Contrast Check

Large Text (above 18pt) WCAG AA ✓ Pass

Any Text WCAG AA ✓ Pass

Large Text (above 18pt) WCAG AAA ✓ Pass

Any Text WCAG AAA ✓ Pass

If you want to check with other color combinations, try the [Color Contrast Checker](#).

Hex F47B6C Background



This preview shows how black text looks on a background with the Hex color F47B6C.

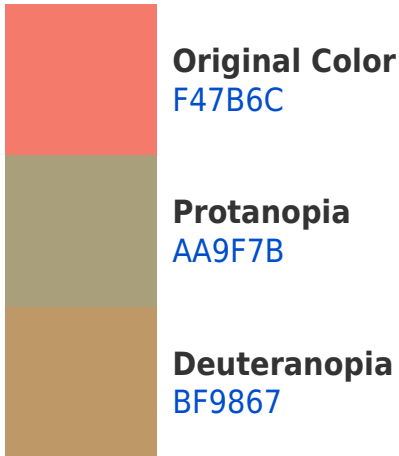


This preview shows how white text looks on a background with the Hex color F47B6C.

Color Blindness Simulation

Color vision deficiency is a very complex topic, and I could not describe the different causes any better than Wikipedia does, so if you want to learn more, you should check out their [article about color blindness](#).

Dichromacy



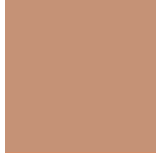


Tritanopia
F57880

Trichromacy



Original Color
F47B6C



Protanomaly
C59276



Deuteranomaly
D28D69

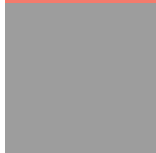


Tritanomaly
F57979

Monochromacy



Original Color
F47B6C



Achromatopsia
9D9D9D



Achromatomaly
BD918B

CSS Examples

Text

The CSS property to change the color of the text to Hex F47B6C is called "color". The color property can be set on classes, ids or directly on the HTML element.

This example shows how text in the color #F47B6C looks like.

```
.text, #text, p{  
    color:#F47B6C  
}
```

If you want to add a text shadow in that color use the text-shadow property, you can generate a text shadow directly with our [CSS Text Shadow Generator](#).

Here you see how black text with a 4 pixel #F47B6C colored shadow looks like.

```
.shadow{ text-shadow: 4px 4px 2px #F47B6C
}
```

Border

The CSS property to change the border of an element to Hex F47B6C is called "border". The border property can be set on classes, ids or directly on the HTML element.

This example shows the color as border, it can be applied via the CSS property "border" or "border-color".

```
.border, #border, table{ border:4px solid
#F47B6C }
```

If only the border color should be changed use the property `border-color`.

```
.border{ border-color:#F47B6C }
```

If you want to add a box shadow in that color use:

Here you see how a box with a 4 pixel #F47B6C colored shadow looks like.

```
.boxshadow{ -moz-box-shadow:4px 4px 4px  
4px #F47B6C; -webkit-box-shadow:4px 4px  
4px 4px #F47B6C; box-shadow:4px 4px 4px  
4px #F47B6C }
```

Background

The CSS property to change the background color of an element to Hex F47B6C is called "background". The background property can be set on classes, ids or directly on the HTML element.

```
.background, #background, body{  
background:#F47B6C }
```

If only the background color should be changed can be used:

```
.background{ background-color:#F47B6C }
```

This example shows the color as background, it is applied via the CSS property "background".

To optimize and compress your CSS code, you can use our [online CSS compressor and optimizer](#) based on csstidy. If you want to create a linear or radial gradient as background or border, check our [CSS Gradient Generator](#).

Hey! You found this booklet interesting? Support Converting Colors with the new Membership Option!

The pro membership hides all ads, plus gives you double the colors in the color bucket, and more awesome pro features!

[Learn more, Memberships starting at \\$2.50/m!](#)

**Follow me
on Twitter!**

@ConvertingColor