

Converting Colors

Hex(F47B6E)

Have a look what the booklet for
Hex(F47B6E) contains.

Hex(F47B6E)	3
<i>Conversions</i>	4
<i>Details</i>	6
<i>Harmonies</i>	11
<i>Previews</i>	23
<i>Color Blindness Simulation</i>	26
<i>CSS Examples</i>	29

Color

Hex(F47B6E)

Conversions

Conversions Part 1

Format	Color
Hex	F47B6E
RGB	244, 123, 110
RGB Percent	96%, 48%, 43%
CMY	0.0431, 0.5176, 0.5686
CMYK	0.00, 0.50, 0.55, 0.04
HSL	6°, 86%, 69%
HSV	6°, 55%, 96%
XYZ	47.2057, 34.5248, 18.9278
YIQ	157.6970, 76.2890, 21.6090

Conversions

Conversions Part 2

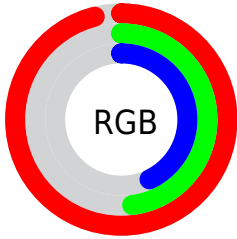
Format	Color
RYB	244, 124, 110
Decimal	16022382
CIELab	65.38, 45.20, 28.68
CIELCh	65, 53.534, 32.400
Yxy	34.5248, 0.4690, 0.3430
Android (android.graphics.Color)	4294212462 (0xFFFF47B6E)
YUV	157.6970, -23.5146, 75.6877
Hunter-Lab	58.7578, 40.5796, 22.0312

Details

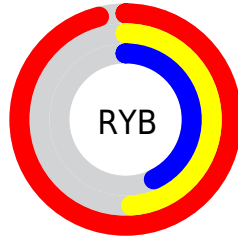
The Hex color **F47B6E** is a light color, and the websafe version is hex **FF6666**. A complement of this color would be **6EE7F4**, and the grayscale version is **9E9E9E**.

A 20% lighter version of the original color is **FFB2A2**, and **B7463E** is the 20% darker color. If you saturate the color by 10%, you get **F46556**, and if you desaturate by 10%, it is **F49186**.

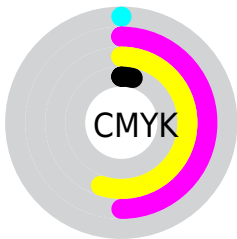
Distribution



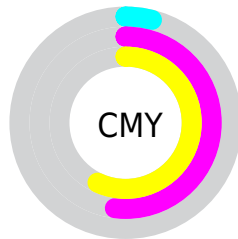
- Red (96%)
- Green (48%)
- Blue (43%)



- Red (96%)
- Yellow (49%)
- Blue (43%)



- Cyan (0%)
- Magenta (50%)
- Yellow (55%)
- Black (4%)



- Cyan (4%)
- Magenta (52%)
- Yellow (57%)

Brightness & Saturation Gradients

These gradients show how the Hex color F47B6E changes by changing the brightness by 10 percent. The first figure shows a shift by +10% for each color and the second figure -10%.

Similar to the brightness gradients but the following saturation gradients show a change of the Hex color F47B6E by changing the saturation by 10% instead.

 F47B6E

 F47B6E

FFFFFF

 D56056

 FF2A2

 B7463E

 FFCEBD

 992B28

 FFEBD9

 7C0B13

 FFFFF5

 5F0000

 420000

 270001

 000000

 F47B6E

 F47B6E

 F46556

 F49186

 F44F3D

 F4A79F

 F43925

 F4BDB7

 F4230C

 F4D3D0

 F41800

 F4E9E8

 F4FFFF

Harmonies

Analogous

The Analogous color harmony consists of three colors that are next to each other on the color wheel.



F6749D



F47B6E



DD8C49

Triad

The Triadic color harmony groups three colors that are evenly spaced from another and form a triangle on the color wheel.



F47B6E



41B370



45A3FE

Complementary

The Complementary color scheme is a pair of colors which are on the opposite of each other on the color wheel.



F47B6E



6EE7F4

Split Complementary

Split-complementary colors differ from the complementary color scheme. The scheme consists of three colors, the original color and two neighbors of the complement color.



00AFF3



F47B6E



00B6A1

Square

The Square scheme is like the rectangle color scheme, but the four colors are evenly spaced on the color wheel.



F47B6E



85AB49



00B5D1



A691F0

Rectangle

The Rectangle color scheme consists of four colors that form a rectangle on the color wheel.



F47B6E



C4983C



00B5D1



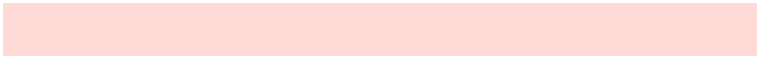
00A8FE

Sweetspot

The Sweet Spot groups the original color and five complimentary colors.



F47B6E



FFDAD6



F46EE9



806A67



000000



808080

Same Dimension

The Same Dimension uses a secret algorithm to generate beautiful new colors.



F47B6E



FF6757



F4BC6E



7A6F6E



BA1200



3B0600

Inverse Universe

The Inverse Universe completely reimagines the original color for something new.



6EE7F4



57EFFF



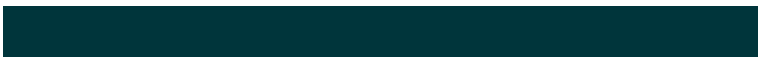
6EA6F4



6E797A



00A8BA



00353B

Previews

White Background



This preview shows how the Hex color F47B6E looks on a white background.

Color Contrast Check

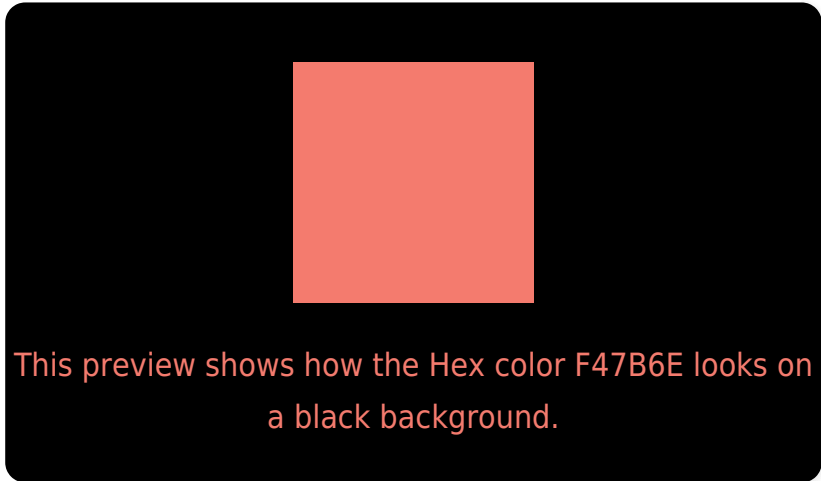
Large Text (above 18pt) WCAG AA × Fail

Any Text WCAG AA × Fail

Large Text (above 18pt) WCAG AAA × Fail

Any Text WCAG AAA × Fail

Black Background



Color Contrast Check

Large Text (above 18pt) WCAG AA ✓ Pass

Any Text WCAG AA ✓ Pass

Large Text (above 18pt) WCAG AAA ✓ Pass

Any Text WCAG AAA ✓ Pass

If you want to check with other color combinations, try the [Color Contrast Checker](#).

Hex F47B6E Background



This preview shows how black text looks on a background with the Hex color F47B6E.



This preview shows how white text looks on a background with the Hex color F47B6E.

Color Blindness Simulation

Color vision deficiency is a very complex topic, and I could not describe the different causes any better than Wikipedia does, so if you want to learn more, you should check out their [article about color blindness](#).

Dichromacy



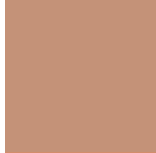


Tritanopia
F57881

Trichromacy



Original Color
F47B6E



Protanomaly
C49278



Deuteranomaly
D28D6B

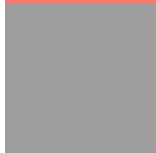


Tritanomaly
F5797A

Monochromacy



Original Color
F47B6E



Achromatopsia
9E9E9E



Achromatomaly
BD918D

CSS Examples

Text

The CSS property to change the color of the text to Hex F47B6E is called "color". The color property can be set on classes, ids or directly on the HTML element.

This example shows how text in the color #F47B6E looks like.

```
.text, #text, p{  
    color:#F47B6E  
}
```

If you want to add a text shadow in that color use the text-shadow property, you can generate a text shadow directly with our [CSS Text Shadow Generator](#).

Here you see how black text with a 4 pixel #F47B6E colored shadow looks like.

```
.shadow{ text-shadow: 4px 4px 2px #F47B6E
}
```

Border

The CSS property to change the border of an element to Hex F47B6E is called "border". The border property can be set on classes, ids or directly on the HTML element.

This example shows the color as border, it can be applied via the CSS property "border" or "border-color".

```
.border, #border, table{ border:4px solid
#F47B6E }
```

If only the border color should be changed use the property `border-color`.

```
.border{ border-color:#F47B6E }
```

If you want to add a box shadow in that color use:

Here you see how a box with a 4 pixel #F47B6E colored shadow looks like.

```
.boxshadow{ -moz-box-shadow:4px 4px 4px  
4px #F47B6E; -webkit-box-shadow:4px 4px  
4px 4px #F47B6E; box-shadow:4px 4px 4px  
4px #F47B6E }
```

Background

The CSS property to change the background color of an element to Hex F47B6E is called "background". The background property can be set on classes, ids or directly on the HTML element.

```
.background, #background, body{  
background:#F47B6E }
```

If only the background color should be changed can be used:

```
.background{ background-color:#F47B6E }
```

This example shows the color as background, it is applied via the CSS property "background".

To optimize and compress your CSS code, you can use our [online CSS compressor and optimizer](#) based on csstidy. If you want to create a linear or radial gradient as background or border, check our [CSS Gradient Generator](#).

Hey! You found this booklet interesting? Support Converting Colors with the new Membership Option!

The pro membership hides all ads, plus gives you double the colors in the color bucket, and more awesome pro features!

[Learn more, Memberships starting at \\$2.50/m!](#)

**Follow me
on Twitter!**

@ConvertingColor