

Converting Colors

Hex(F4B9E7)

Have a look what the booklet for
Hex(F4B9E7) contains.

Hex(F4B9E7)	3
<i>Conversions</i>	4
<i>Details</i>	6
<i>Harmonies</i>	11
<i>Previews</i>	23
<i>Color Blindness Simulation</i>	26
<i>CSS Examples</i>	29

Color

Hex(F4B9E7)

Conversions

Conversions Part 1

Format	Color
Hex	F4B9E7
RGB	244, 185, 231
RGB Percent	96%, 73%, 91%
CMY	0.0431, 0.2745, 0.0941
CMYK	0.00, 0.24, 0.05, 0.04
HSL	313°, 73%, 84%
HSV	313°, 24%, 96%
XYZ	69.0810, 59.7005, 83.4837
YIQ	207.8850, 20.3980, 26.8140

Conversions

Conversions Part 2

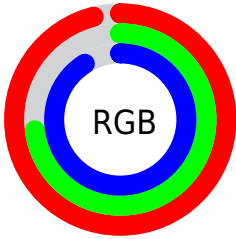
Format	Color
RYB	244, 185, 231
Decimal	16038375
CIELab	81.68, 28.54, -14.65
CIELCh	82, 32.075, 332.828
Yxy	59.7005, 0.3254, 0.2813
Android (android.graphics.Color)	4294228455 (0xFFFF4B9E7)
YUV	207.8850, 11.3957, 31.6729
Hunter-Lab	77.2661, 24.3750, -9.9748

Details

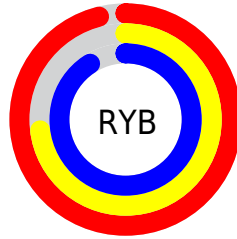
The Hex color **F4B9E7** is a light color, and the websafe version is hex **FFCCFF**. A complement of this color would be **B9F4C6**, and the grayscale version is **D0D0D0**.

A 20% lighter version of the original color is **FFF1FF**, and **BB83AF** is the 20% darker color. If you saturate the color by 10%, you get **F4A1E2**, and if you desaturate by 10%, it is **F4D1EC**.

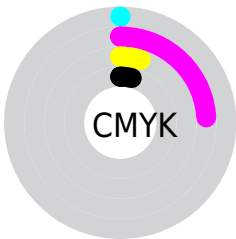
Distribution



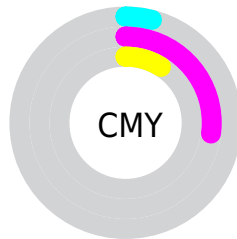
- Red (96%)
- Green (73%)
- Blue (91%)



- Red (96%)
- Yellow (73%)
- Blue (91%)



- Cyan (0%)
- Magenta (24%)
- Yellow (5%)
- Black (4%)



- Cyan (4%)
- Magenta (27%)
- Yellow (9%)

Brightness & Saturation Gradients

These gradients show how the Hex color F4B9E7 changes by changing the brightness by 10 percent. The first figure shows a shift by +10% for each color and the second figure -10%.

Similar to the brightness gradients but the following saturation gradients show a change of the Hex color F4B9E7 by changing the saturation by 10% instead.

 F4B9E7

FFFFFF

 FFF1FF

 F4B9E7

 D79ECB

 BB83AF

 A06A95

 85517B

 6B3962

 52224A

 3A0A33

 26001E

 000001

 F4B9E7

 F4B9E7

 F4A1E2

 F4D1EC

 F488DC

 F4EAF2

 F470D7

 F4FFF7

 F457D1

 F4FFFD

 F43FCC

 F4FFFF

 F427C7

 F40EC1

 F400BE

Harmonies

Analogous

The Analogous color harmony consists of three colors that are next to each other on the color wheel.



D3C2FD



F4B9E7



FFB5C9

Triad

The Triadic color harmony groups three colors that are evenly spaced from another and form a triangle on the color wheel.



F4B9E7



DECA8F



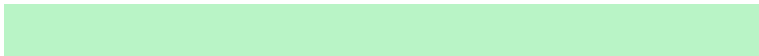
6EDBEB

Complementary

The Complementary color scheme is a pair of colors which are on the opposite of each other on the color wheel.



F4B9E7



B9F4C6

Split Complementary

Split-complementary colors differ from the complementary color scheme. The scheme consists of three colors, the original color and two neighbors of the complement color.



7BDCCD



F4B9E7



BDD398

Square

The Square scheme is like the rectangle color scheme, but the four colors are evenly spaced on the color wheel.



F4B9E7



F7C096



9AD9AF



80D5FF

Rectangle

The Rectangle color scheme consists of four colors that form a rectangle on the color wheel.



F4B9E7



FFB6B5



9AD9AF



6FDBE1

Sweetspot

The Sweet Spot groups the original color and five complimentary colors.



F4B9E7



FFEDFB



C6B9F4



80757D



000000



808080

Same Dimension

The Same Dimension uses a secret algorithm to generate beautiful new colors.



F4B9E7



FFB5EF



F4B9CA



7A6E78



BA0091



3B002E

Inverse Universe

The Inverse Universe completely reimagines the original color for something new.



F4B9E7



FFB5EF



B9F4E3



7A6E78



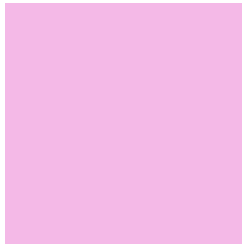
BA0091



3B002E

Previews

White Background



This preview shows how the Hex color F4B9E7 looks on a white background.

Color Contrast Check

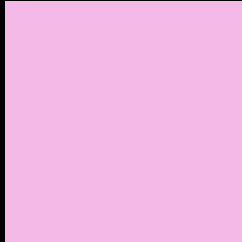
Large Text (above 18pt) WCAG AA × Fail

Any Text WCAG AA × Fail

Large Text (above 18pt) WCAG AAA × Fail

Any Text WCAG AAA × Fail

Black Background



This preview shows how the Hex color F4B9E7 looks on a black background.

Color Contrast Check

Large Text (above 18pt) WCAG AA ✓ Pass

Any Text WCAG AA ✓ Pass

Large Text (above 18pt) WCAG AAA ✓ Pass

Any Text WCAG AAA ✓ Pass

If you want to check with other color combinations, try the [Color Contrast Checker](#).

Hex F4B9E7 Background



This preview shows how black text looks on a background with the Hex color F4B9E7.

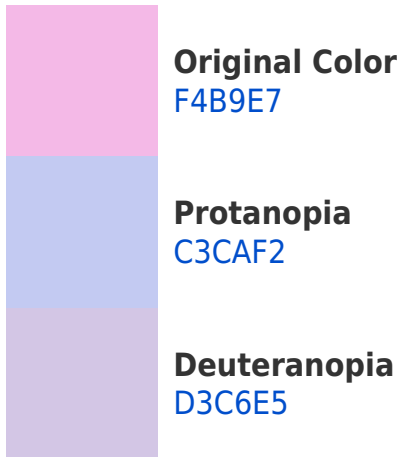


This preview shows how white text looks on a background with the Hex color F4B9E7.

Color Blindness Simulation

Color vision deficiency is a very complex topic, and I could not describe the different causes any better than Wikipedia does, so if you want to learn more, you should check out their [article about color blindness](#).

Dichromacy



Trichromacy



Original Color
F4B9E7



Protanomaly
D5C4EE



Deuteranomaly
DFC1E6

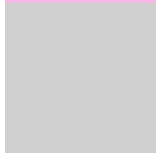


Tritanomaly
F1BCD6

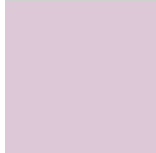
Monochromacy



Original Color
F4B9E7



Achromatopsia
D0D0D0



Achromatomaly
DDC8D8

CSS Examples

Text

The CSS property to change the color of the text to Hex F4B9E7 is called "color". The color property can be set on classes, ids or directly on the HTML element.

This example shows how text in the color #F4B9E7 looks like.

```
.text, #text, p{  
    color:#F4B9E7  
}
```

If you want to add a text shadow in that color use the text-shadow property, you can generate a text shadow directly with our [CSS Text Shadow Generator](#).

Here you see how black text with a 4 pixel #F4B9E7 colored shadow looks like.

```
.shadow{ text-shadow: 4px 4px 2px #F4B9E7
}
```

Border

The CSS property to change the border of an element to Hex F4B9E7 is called "border". The border property can be set on classes, ids or directly on the HTML element.

This example shows the color as border, it can be applied via the CSS property "border" or "border-color".

```
.border, #border, table{ border:4px solid
#F4B9E7 }
```

If only the border color should be changed use the property `border-color`.

```
.border{ border-color:#F4B9E7 }
```

If you want to add a box shadow in that color use:

Here you see how a box with a 4 pixel #F4B9E7 colored shadow looks like.

```
.boxshadow{ -moz-box-shadow:4px 4px 4px  
4px #F4B9E7; -webkit-box-shadow:4px 4px  
4px 4px #F4B9E7; box-shadow:4px 4px 4px  
4px #F4B9E7 }
```

Background

The CSS property to change the background color of an element to Hex F4B9E7 is called "background". The background property can be set on classes, ids or directly on the HTML element.

```
.background, #background, body{  
background:#F4B9E7 }
```

If only the background color should be changed can be used:

```
.background{ background-color:#F4B9E7 }
```

This example shows the color as background, it is applied via the CSS property "background".

To optimize and compress your CSS code, you can use our [online CSS compressor and optimizer](#) based on csstidy. If you want to create a linear or radial gradient as background or border, check our [CSS Gradient Generator](#).

Hey! You found this booklet interesting? Support Converting Colors with the new Membership Option!

The pro membership hides all ads, plus gives you double the colors in the color bucket, and more awesome pro features!

[Learn more, Memberships starting at \\$2.50/m!](#)

**Follow me
on Twitter!**

@ConvertingColor