

# Converting Colors

Hex(F4BCB3)

Have a look what the booklet for  
Hex(F4BCB3) contains.

<b>Hex(F4BCB3)</b> .....	3
<i><b>Conversions</b></i> .....	4
<i><b>Details</b></i> .....	6
<i><b>Harmonies</b></i> .....	11
<i><b>Previews</b></i> .....	23
<i><b>Color Blindness Simulation</b></i> .....	26
<i><b>CSS Examples</b></i> .....	29

# **Color**

**Hex(F4BCB3)**

# Conversions

## Conversions Part 1

Format	Color
Hex	F4BCB3
RGB	244, 188, 179
RGB Percent	96%, 74%, 70%
CMY	0.0431, 0.2627, 0.2980
CMYK	0.00, 0.23, 0.27, 0.04
HSL	8°, 75%, 83%
HSV	8°, 27%, 96%
XYZ	63.4281, 58.4542, 50.5876
YIQ	203.7180, 36.2650, 9.0730

# Conversions

## Conversions Part 2

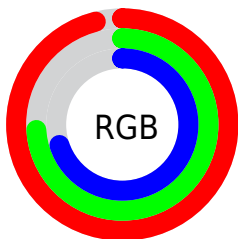
<b>Format</b>	<b>Color</b>
<b>R<sub>YB</sub></b>	244, 189, 179
Decimal	16039091
CIE <sub>Lab</sub>	80.99, 18.87, 12.32
CIE <sub>LCh</sub>	81, 22.540, 33.142
Yxy	58.4542, 0.3678, 0.3389
Android (android.graphics.Color)	4294229171 (0xFFF4BCB3)
YUV	203.7180, -12.1860, 35.3273
Hunter-Lab	76.4554, 14.2885, 14.2888

# Details

The Hex color **F4BCB3** is a light color, and the websafe version is hex **FFCCCC**. A complement of this color would be **B3EBF4**, and the grayscale version is **CCCCCC**.

A 20% lighter version of the original color is **FFF4EB**, and **BB877E** is the 20% darker color. If you saturate the color by 10%, you get **F4A79B**, and if you desaturate by 10%, it is **F4D1CB**.

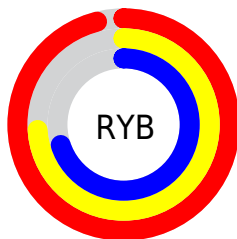
# Distribution



Red (96%)

Green (74%)

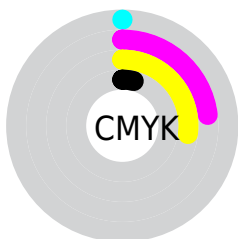
Blue (70%)



Red (96%)

Yellow (74%)

Blue (70%)

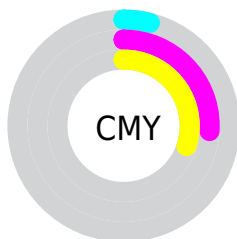


Cyan (0%)

Magenta (23%)

Yellow (27%)

Black (4%)



Cyan (4%)

Magenta (26%)

Yellow (30%)

# Brightness & Saturation Gradients

These gradients show how the Hex color F4BCB3 changes by changing the brightness by 10 percent. The first figure shows a shift by +10% for each color and the second figure -10%.

Similar to the brightness gradients but the following saturation gradients show a change of the Hex color F4BCB3 by changing the saturation by 10% instead.



 F4BCB3

 F4BCB3

FFFFFF

 D7A198

 FFF4EB

 BB877E

 9F6D65

 84544D

 6A3D37

 502621

 38110B

 230000

 000000

 F4BCB3

 F4BCB3

 F4A79B

 F4D1CB

 F49282

 F4E6E4

 F47D6A

 F4FBFC

 F46851

 F4FFFF

 F45339

 F43E21

 F42908

 F42200

# Harmonies

## Analogous

The Analogous color harmony consists of three colors that are next to each other on the color wheel.



F3BAC8



F4BCB3



EAC1A4

# Triad

The Triadic color harmony groups three colors that are evenly spaced from another and form a triangle on the color wheel.



F4BCB3



A8D3B5



B4CAF3

# Complementary

The Complementary color scheme is a pair of colors which are on the opposite of each other on the color wheel.



F4BCB3



B3EBF4

# Split Complementary

Split-complementary colors differ from the complementary color scheme. The scheme consists of three colors, the original color and two neighbors of the complement color.



9BD0EE



F4BCB3



95D5CB

# Square

The Square scheme is like the rectangle color scheme, but the four colors are evenly spaced on the color wheel.



F4BCB3



C0CFA5



8FD4DF



D0C3EC

# Rectangle

The Rectangle color scheme consists of four colors that form a rectangle on the color wheel.



F4BCB3



DEC6A0



8FD4DF



ABCCF2

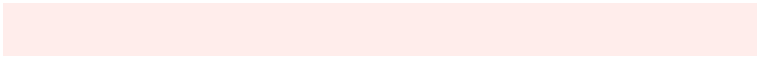


# Sweetspot

The Sweet Spot groups the original color and five complimentary colors.



F4BCB3



FFEDEB



F4B3EB



807573



000000



808080



# Same Dimension

The Same Dimension uses a secret algorithm to generate beautiful new colors.



F4BCB3



FFB9AD



F4DCB3



7A706E



BA1A00



3B0800



# Inverse Universe

The Inverse Universe completely reimagines the original color for something new.



B3EBF4



ADF4FF



B3CBF4



6E797A



00A0BA

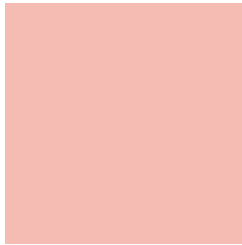


00333B



# Previews

## White Background



This preview shows how the Hex color F4BCB3 looks on a white background.

## Color Contrast Check

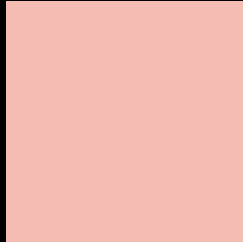
Large Text (above 18pt) WCAG AA × Fail

Any Text WCAG AA × Fail

Large Text (above 18pt) WCAG AAA × Fail

Any Text WCAG AAA × Fail

# Black Background



This preview shows how the Hex color F4BCB3 looks on a black background.

## Color Contrast Check

Large Text (above 18pt) WCAG AA ✓ Pass

Any Text WCAG AA ✓ Pass

Large Text (above 18pt) WCAG AAA ✓ Pass

Any Text WCAG AAA ✓ Pass

If you want to check with other color combinations, try the [Color Contrast Checker](#).



## Hex F4BCB3 Background



This preview shows how black text looks on a background with the Hex color F4BCB3.

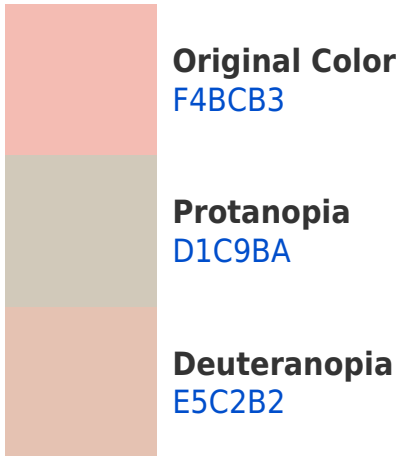


This preview shows how white text looks on a background with the Hex color F4BCB3.

# Color Blindness Simulation

Color vision deficiency is a very complex topic, and I could not describe the different causes any better than Wikipedia does, so if you want to learn more, you should check out their [article about color blindness](#).

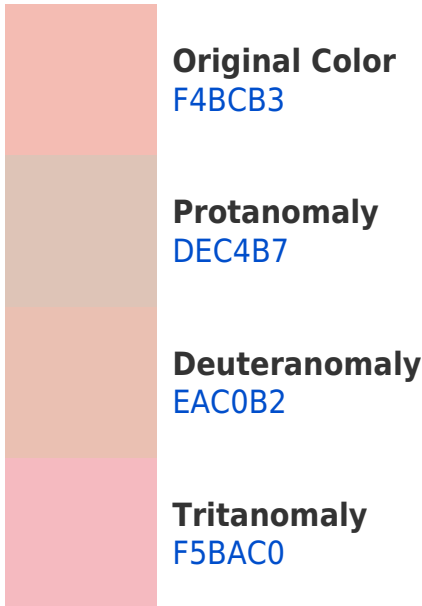
## Dichromacy



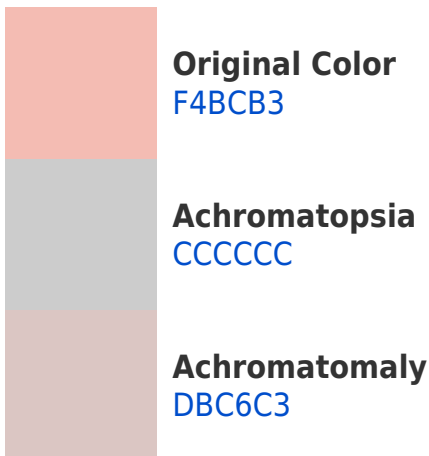


**Tritanopia**  
F6B9C7

# Trichromacy



# Monochromacy



# CSS Examples

## Text

The CSS property to change the color of the text to Hex F4BCB3 is called "color". The color property can be set on classes, ids or directly on the HTML element.

This example shows how text in the color #F4BCB3 looks like.

```
.text, #text, p{  
    color:#F4BCB3  
}
```

If you want to add a text shadow in that color use the text-shadow property, you can generate a text shadow directly with our [CSS Text Shadow Generator](#).

Here you see how black text with a 4 pixel #F4BCB3 colored shadow looks like.

```
.shadow{ text-shadow: 4px 4px 2px #F4BCB3
}
```

## Border

The CSS property to change the border of an element to Hex F4BCB3 is called "border". The border property can be set on classes, ids or directly on the HTML element.

This example shows the color as border, it can be applied via the CSS property "border" or "border-color".

```
.border, #border, table{ border:4px solid
#F4BCB3 }
```

If only the border color should be changed use the property `border-color`.

```
.border{ border-color:#F4BCB3 }
```

If you want to add a box shadow in that color use:

Here you see how a box with a 4 pixel #F4BCB3 colored shadow looks like.

```
.boxshadow{ -moz-box-shadow:4px 4px 4px  
4px #F4BCB3; -webkit-box-shadow:4px 4px  
4px 4px #F4BCB3; box-shadow:4px 4px 4px  
4px #F4BCB3 }
```

# Background

The CSS property to change the background color of an element to Hex F4BCB3 is called "background". The background property can be set on classes, ids or directly on the HTML element.

```
.background, #background, body{  
background:#F4BCB3 }
```

If only the background color should be changed can be used:

```
.background{ background-color:#F4BCB3 }
```

This example shows the color as background, it is applied via the CSS property "background".

To optimize and compress your CSS code, you can use our [online CSS compressor and optimizer](#) based on csstidy. If you want to create a linear or radial gradient as background or border, check our [CSS Gradient Generator](#).



Hey! You found this booklet interesting? Support Converting Colors with the new Membership Option!

The pro membership hides all ads, plus gives you double the colors in the color bucket, and more awesome pro features!

**[Learn more, Memberships starting at \\$2.50/m!](#)**

**Follow me  
on Twitter!**

@ConvertingColor