

Converting Colors

Hex(F4BFAB)

Have a look what the booklet for
Hex(F4BFAB) contains.

Hex(F4BFAB)	3
<i>Conversions</i>	4
<i>Details</i>	6
<i>Harmonies</i>	11
<i>Previews</i>	23
<i>Color Blindness Simulation</i>	26
<i>CSS Examples</i>	29

Color

Hex(F4BFAB)

Conversions

Conversions Part 1

Format	Color
Hex	F4BFAB
RGB	244, 191, 171
RGB Percent	96%, 75%, 67%
CMY	0.0431, 0.2510, 0.3294
CMYK	0.00, 0.22, 0.30, 0.04
HSL	16°, 77%, 81%
HSV	16°, 30%, 96%
XYZ	63.2897, 59.4350, 46.6644
YIQ	204.5670, 38.0080, 5.0160

Conversions

Conversions Part 2

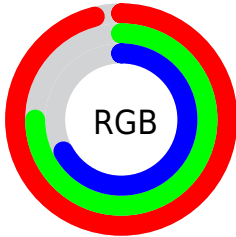
Format	Color
RYB	244, 199, 171
Decimal	16039851
CIELab	81.53, 16.23, 17.37
CIELCh	82, 23.769, 46.937
Yxy	59.4350, 0.3736, 0.3509
Android (android.graphics.Color)	4294229931 (0xFFFF4BFAB)
YUV	204.5670, -16.5485, 34.5827
Hunter-Lab	77.0941, 11.6234, 18.0781

Details

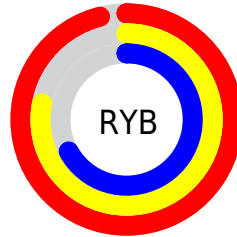
The Hex color **F4BFAB** is a light color, and the websafe version is hex **FFCCCC**. A complement of this color would be **ABE0F4**, and the grayscale version is **CDCDCD**.

A 20% lighter version of the original color is **FFF7E2**, and **BB8977** is the 20% darker color. If you saturate the color by 10%, you get **F4AD93**, and if you desaturate by 10%, it is **F4D1C3**.

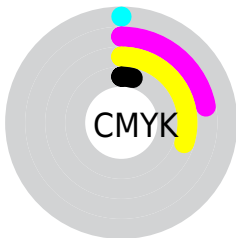
Distribution



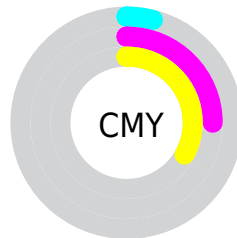
- Red (96%)
- Green (75%)
- Blue (67%)



- Red (96%)
- Yellow (78%)
- Blue (67%)



- Cyan (0%)
- Magenta (22%)
- Yellow (30%)
- Black (4%)



- Cyan (4%)
- Magenta (25%)
- Yellow (33%)

Brightness & Saturation Gradients

These gradients show how the Hex color F4BFAB changes by changing the brightness by 10 percent. The first figure shows a shift by +10% for each color and the second figure -10%.

Similar to the brightness gradients but the following saturation gradients show a change of the Hex color F4BFAB by changing the saturation by 10% instead.

 F4BFAB

 F4BFAB

FFFFFF

 D7A490

 FFF7E2

 BB8977

 9F705E

 845746

 694030

 50291B

 381401

 210000

 000000

 F4BFAB

 F4BFAB

 F4AD93

 F4D1C3

 F49C7A

 F4E2DC

 F48A62

 F4F4F4

 F47849

 F4FFFF

 F46631

 F45519

 F44300

Harmonies

Analogous

The Analogous color harmony consists of three colors that are next to each other on the color wheel.



F9BBBF



F4BFAB



E5C6A0

Triad

The Triadic color harmony groups three colors that are evenly spaced from another and form a triangle on the color wheel.



F4BFAB



9DD7C0



C2C8F5

Complementary

The Complementary color scheme is a pair of colors which are on the opposite of each other on the color wheel.



F4BFAB



ABE0F4

Split Complementary

Split-complementary colors differ from the complementary color scheme. The scheme consists of three colors, the original color and two neighbors of the complement color.



A4D0F5



F4BFAB



8ED7D7

Square

The Square scheme is like the rectangle color scheme, but the four colors are evenly spaced on the color wheel.



F4BFAB



B5D3AC



90D5EA



DEC1E9

Rectangle

The Rectangle color scheme consists of four colors that form a rectangle on the color wheel.



F4BFAB



D6CB9E



90D5EA



B7CBF6

Sweetspot

The Sweet Spot groups the original color and five complimentary colors.



F4BFAB



FFEEE8



F4ABE1



807571



000000



808080

Same Dimension

The Same Dimension uses a secret algorithm to generate beautiful new colors.



F4BFAB



FFBCA3



F4E3AB



7A726E



BA3300



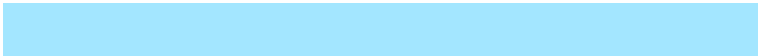
3B1000

Inverse Universe

The Inverse Universe completely reimagines the original color for something new.



ABE0F4



A3E6FF



ABBCF4



6E777A



0087BA



002B3B

Previews

White Background



This preview shows how the Hex color F4BFAB looks on a white background.

Color Contrast Check

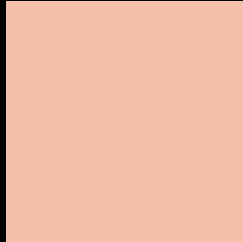
Large Text (above 18pt) WCAG AA × Fail

Any Text WCAG AA × Fail

Large Text (above 18pt) WCAG AAA × Fail

Any Text WCAG AAA × Fail

Black Background



This preview shows how the Hex color F4BFAB looks on a black background.

Color Contrast Check

Large Text (above 18pt) WCAG AA ✓ Pass

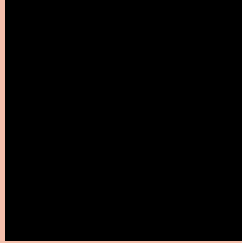
Any Text WCAG AA ✓ Pass

Large Text (above 18pt) WCAG AAA ✓ Pass

Any Text WCAG AAA ✓ Pass

If you want to check with other color combinations, try the [Color Contrast Checker](#).

Hex F4BFAB Background



This preview shows how black text looks on a background with the Hex color F4BFAB.

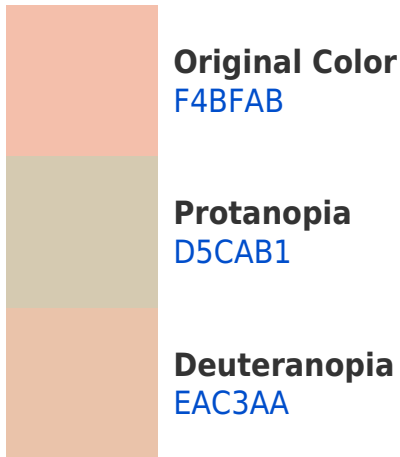


This preview shows how white text looks on a background with the Hex color F4BFAB.

Color Blindness Simulation

Color vision deficiency is a very complex topic, and I could not describe the different causes any better than Wikipedia does, so if you want to learn more, you should check out their [article about color blindness](#).

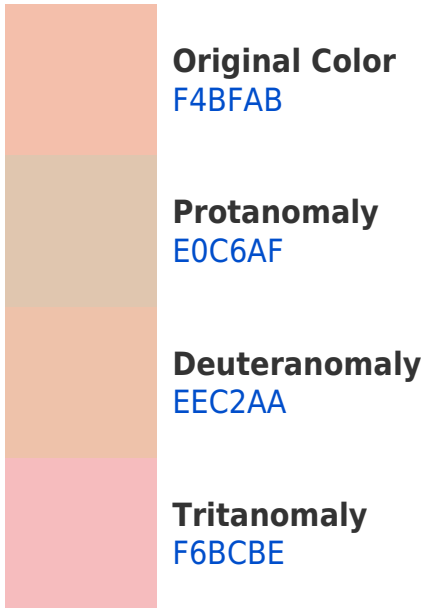
Dichromacy



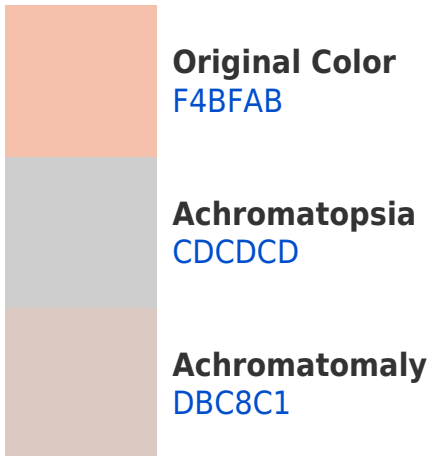


Tritanopia
F7BBC9

Trichromacy



Monochromacy



CSS Examples

Text

The CSS property to change the color of the text to Hex F4BFAB is called "color". The color property can be set on classes, ids or directly on the HTML element.

This example shows how text in the color #F4BFAB looks like.

```
.text, #text, p{  
    color:#F4BFAB  
}
```

If you want to add a text shadow in that color use the text-shadow property, you can generate a text shadow directly with our [CSS Text Shadow Generator](#).

Here you see how black text with a 4 pixel #F4BFAB colored shadow looks like.

```
.shadow{ text-shadow: 4px 4px 2px #F4BFAB
}
```

Border

The CSS property to change the border of an element to Hex F4BFAB is called "border". The border property can be set on classes, ids or directly on the HTML element.

This example shows the color as border, it can be applied via the CSS property "border" or "border-color".

```
.border, #border, table{ border:4px solid
#F4BFAB }
```

If only the border color should be changed use the property `border-color`.

```
.border{ border-color:#F4BFAB }
```

If you want to add a box shadow in that color use:

Here you see how a box with a 4 pixel #F4BFAB colored shadow looks like.

```
.boxshadow{ -moz-box-shadow:4px 4px 4px  
4px #F4BFAB; -webkit-box-shadow:4px 4px  
4px 4px #F4BFAB; box-shadow:4px 4px 4px  
4px #F4BFAB }
```

Background

The CSS property to change the background color of an element to Hex F4BFAB is called "background". The background property can be set on classes, ids or directly on the HTML element.

```
.background, #background, body{  
background:#F4BFAB }
```

If only the background color should be changed can be used:

```
.background{ background-color:#F4BFAB }
```

This example shows the color as background, it is applied via the CSS property "background".

To optimize and compress your CSS code, you can use our [online CSS compressor and optimizer](#) based on csstidy. If you want to create a linear or radial gradient as background or border, check our [CSS Gradient Generator](#).

Hey! You found this booklet interesting? Support Converting Colors with the new Membership Option!

The pro membership hides all ads, plus gives you double the colors in the color bucket, and more awesome pro features!

[Learn more, Memberships starting at \\$2.50/m!](#)

**Follow me
on Twitter!**

@ConvertingColor