

Converting Colors

Hex(F53B7C)

Have a look what the booklet for
Hex(F53B7C) contains.

Hex(F53B7C)	3
<i>Conversions</i>	4
<i>Details</i>	6
<i>Harmonies</i>	11
<i>Previews</i>	23
<i>Color Blindness Simulation</i>	26
<i>CSS Examples</i>	29

Color

Hex(F53B7C)

Conversions

Conversions Part 1

Format	Color
Hex	F53B7C
RGB	245, 59, 124
RGB Percent	96%, 23%, 49%
CMY	0.0392, 0.7686, 0.5137
CMYK	0.00, 0.76, 0.49, 0.04
HSL	339°, 90%, 60%
HSV	339°, 76%, 96%
XYZ	42.8582, 23.9956, 21.4415
YIQ	122.0240, 89.9910, 59.6470

Conversions

Conversions Part 2

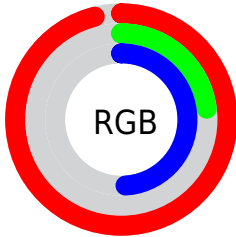
Format	Color
R_{YB}	245, 59, 124
Decimal	16071548
CIE _{Lab}	56.08, 72.71, 7.92
CIE _{LCh}	56, 73.141, 6.220
Yxy	23.9956, 0.4854, 0.2718
Android (android.graphics.Color)	4294261628 (0xFFFF53B7C)
YUV	122.0240, 0.9742, 107.8500
Hunter-Lab	48.9853, 70.4488, 8.3377

Details

The Hex color **F53B7C** is a dark color, and the websafe version is hex **CC0066**. The color can be described as middle washed rose. A complement of this color would be **3BF5B4**, and the grayscale version is **7A7A7A**.

A 20% lighter version of the original color is **FF7AB0**, and **B6004C** is the 20% darker color. If you saturate the color by 10%, you get **F5226C**, and if you desaturate by 10%, it is **F5548C**.

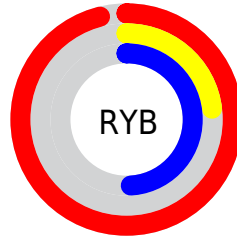
Distribution



Red (96%)

Green (23%)

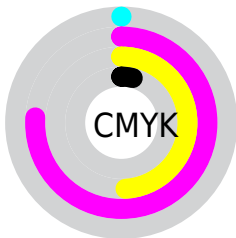
Blue (49%)



Red (96%)

Yellow (23%)

Blue (49%)

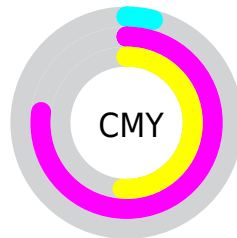


Cyan (0%)

Magenta (76%)

Yellow (49%)

Black (4%)



Cyan (4%)

Magenta (77%)

Yellow (51%)

Brightness & Saturation Gradients

These gradients show how the Hex color F53B7C changes by changing the brightness by 10 percent. The first figure shows a shift by +10% for each color and the second figure -10%.

Similar to the brightness gradients but the following saturation gradients show a change of the Hex color F53B7C by changing the saturation by 10% instead.

 F53B7C

 F53B7C

FFFFFF

 D60963

 FF7AB0

 B6004C

 FF98CC

 980035

 FFB5E8

 790021

 FFD3FF

 5B0008

 FFF1FF

 3E0003

 1A0001

 000000

 F53B7C

 F53B7C

 F5226C

 F5548C

 F50A5C

 F56C9C

 F50056

 F584AC

 F59DBC

 F5B6CC

 F5CEDC

 F5E7EC

 F5FFFC

 F5FFFF

Harmonies

Analogous

The Analogous color harmony consists of three colors that are next to each other on the color wheel.



DB4DBB



F53B7C



EC503F

Triad

The Triadic color harmony groups three colors that are evenly spaced from another and form a triangle on the color wheel.



F53B7C



529700



009BFB

Complementary

The Complementary color scheme is a pair of colors which are on the opposite of each other on the color wheel.



F53B7C



3BF5B4

Split Complementary

Split-complementary colors differ from the complementary color scheme. The scheme consists of three colors, the original color and two neighbors of the complement color.



00A2D0



F53B7C



009F50

Square

The Square scheme is like the rectangle color scheme, but the four colors are evenly spaced on the color wheel.



F53B7C



968800



00A392



008AFF

Rectangle

The Rectangle color scheme consists of four colors that form a rectangle on the color wheel.



F53B7C



D76612



00A392



009EF0

Sweetspot

The Sweet Spot groups the original color and five complimentary colors.



F53B7C



FFC4D9



B43BF5



805C68



000000



808080

Same Dimension

The Same Dimension uses a secret algorithm to generate beautiful new colors.



F53B7C



FF1768



F5573B



7A6E72



BA0041



3B0014

Inverse Universe

The Inverse Universe completely reimagines the original color for something new.



F53B7C



FF1768



3BD9F5



7A6E72



BA0041



3B0014

Previews

White Background



This preview shows how the Hex color F53B7C looks on a white background.

Color Contrast Check

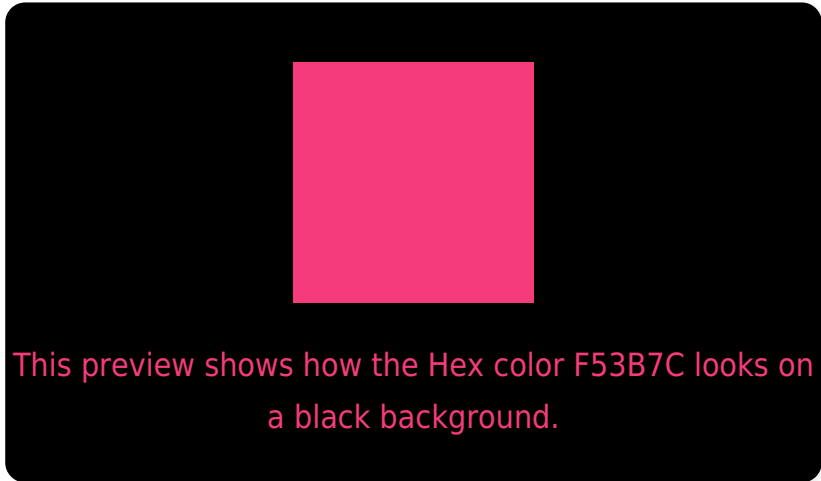
Large Text (above 18pt) WCAG AA ✓ Pass

Any Text WCAG AA ✗ Fail

Large Text (above 18pt) WCAG AAA ✗ Fail

Any Text WCAG AAA ✗ Fail

Black Background



Color Contrast Check

Large Text (above 18pt) WCAG AA ✓ Pass

Any Text WCAG AA ✓ Pass

Large Text (above 18pt) WCAG AAA ✓ Pass

Any Text WCAG AAA × Fail

If you want to check with other color combinations, try the [Color Contrast Checker](#).

Hex F53B7C Background



This preview shows how black text looks on a background with the Hex color F53B7C.



This preview shows how white text looks on a background with the Hex color F53B7C.

Color Blindness Simulation

Color vision deficiency is a very complex topic, and I could not describe the different causes any better than Wikipedia does, so if you want to learn more, you should check out their [article about color blindness](#).

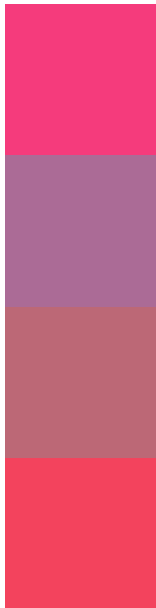
Dichromacy





Tritanopia
F2474B

Trichromacy



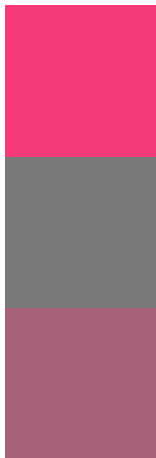
Original Color
F53B7C

Protanomaly
AB6B96

Deuteranomaly
BC6876

Tritanomaly
F3435D

Monochromacy



Original Color
F53B7C

Achromatopsia
7A7A7A

Achromatomaly
A7637B

CSS Examples

Text

The CSS property to change the color of the text to Hex F53B7C is called "color". The color property can be set on classes, ids or directly on the HTML element.

This example shows how text in the color #F53B7C looks like.

```
.text, #text, p{  
    color:#F53B7C  
}
```

If you want to add a text shadow in that color use the text-shadow property, you can generate a text shadow directly with our [CSS Text Shadow Generator](#).

Here you see how black text with a 4 pixel #F53B7C colored shadow looks like.

```
.shadow{ text-shadow: 4px 4px 2px #F53B7C
}
```

Border

The CSS property to change the border of an element to Hex F53B7C is called "border". The border property can be set on classes, ids or directly on the HTML element.

This example shows the color as border, it can be applied via the CSS property "border" or "border-color".

```
.border, #border, table{ border:4px solid
#F53B7C }
```

If only the border color should be changed use the property `border-color`.

```
.border{ border-color:#F53B7C }
```

If you want to add a box shadow in that color use:

Here you see how a box with a 4 pixel #F53B7C colored shadow looks like.

```
.boxshadow{ -moz-box-shadow:4px 4px 4px  
4px #F53B7C; -webkit-box-shadow:4px 4px  
4px 4px #F53B7C; box-shadow:4px 4px 4px  
4px #F53B7C }
```

Background

The CSS property to change the background color of an element to Hex F53B7C is called "background". The background property can be set on classes, ids or directly on the HTML element.

```
.background, #background, body{  
background:#F53B7C }
```

If only the background color should be changed can be used:

```
.background{ background-color:#F53B7C }
```

This example shows the color as background, it is applied via the CSS property "background".

To optimize and compress your CSS code, you can use our [online CSS compressor and optimizer](#) based on csstidy. If you want to create a linear or radial gradient as background or border, check our [CSS Gradient Generator](#).

Hey! You found this booklet interesting? Support Converting Colors with the new Membership Option!

The pro membership hides all ads, plus gives you double the colors in the color bucket, and more awesome pro features!

[Learn more, Memberships starting at \\$2.50/m!](#)

**Follow me
on Twitter!**

@ConvertingColor