

Converting Colors

Hex(F55B82)

Have a look what the booklet for
Hex(F55B82) contains.

Hex(F55B82)	3
<i>Conversions</i>	4
<i>Details</i>	6
<i>Harmonies</i>	11
<i>Previews</i>	23
<i>Color Blindness Simulation</i>	26
<i>CSS Examples</i>	29

Color

Hex(F55B82)

Conversions

Conversions Part 1

Format	Color
Hex	F55B82
RGB	245, 91, 130
RGB Percent	96%, 36%, 51%
CMY	0.0392, 0.6431, 0.4902
CMYK	0.00, 0.63, 0.47, 0.04
HSL	345°, 89%, 66%
HSV	345°, 63%, 96%
XYZ	45.4265, 28.5064, 24.2271
YIQ	141.4920, 79.2650, 44.7770

Conversions

Conversions Part 2

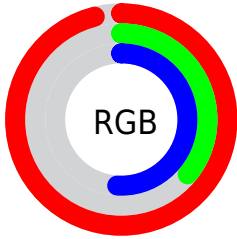
Format	Color
R_{YB}	245, 91, 130
Decimal	16079746
CIE _{Lab}	60.34, 61.86, 10.43
CIE _{LCh}	60, 62.732, 9.574
Yxy	28.5064, 0.4628, 0.2904
Android (android.graphics.Color)	4294269826 (0xFFFF55B82)
YUV	141.4920, -5.6656, 90.7765
Hunter-Lab	53.3913, 58.4369, 10.4702

Details

The Hex color **F55B82** is a light color, and the websafe version is hex **FF6699**. The color can be described as light muted rose. A complement of this color would be **5BF5CE**, and the grayscale version is **8D8D8D**.

A 20% lighter version of the original color is **FF94B7**, and **B81A51** is the 20% darker color. If you saturate the color by 10%, you get **F54270**, and if you desaturate by 10%, it is **F57394**.

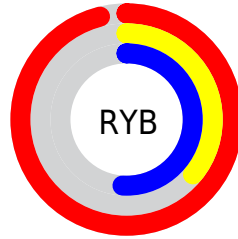
Distribution



Red (96%)

Green (36%)

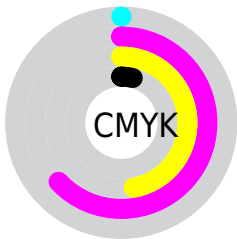
Blue (51%)



Red (96%)

Yellow (36%)

Blue (51%)

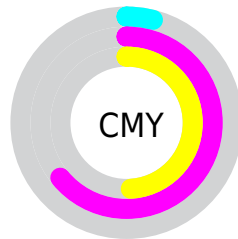


Cyan (0%)

Magenta (63%)

Yellow (47%)

Black (4%)



Cyan (4%)

Magenta (64%)

Yellow (49%)

Brightness & Saturation Gradients

These gradients show how the Hex color F55B82 changes by changing the brightness by 10 percent. The first figure shows a shift by +10% for each color and the second figure -10%.

Similar to the brightness gradients but the following saturation gradients show a change of the Hex color F55B82 by changing the saturation by 10% instead.

 F55B82

 F55B82

FFFFFF

 D63D69

 FF94B7

 B81A51

 FFB1D2

 99003A

 FFCEEF

 7C0025

 FFE8FF

 5E0010

 430003

 220001

 000000

 F55B82

 F55B82

 F54270

 F57394

 F52A5D

 F58CA7

 F5114B

 F5A4B9

 F5003E

 F5BDCB

 F5D5DD

 F5EEF0

 F5FFFF

Harmonies

Analogous

The Analogous color harmony consists of three colors that are next to each other on the color wheel.



E163B9



F55B82



EB6A4E

Triad

The Triadic color harmony groups three colors that are evenly spaced from another and form a triangle on the color wheel.



F55B82



60A235



00A2F9

Complementary

The Complementary color scheme is a pair of colors which are on the opposite of each other on the color wheel.



F55B82



5BF5CE

Split Complementary

Split-complementary colors differ from the complementary color scheme. The scheme consists of three colors, the original color and two neighbors of the complement color.



00AAD7



F55B82



00A969

Square

The Square scheme is like the rectangle color scheme, but the four colors are evenly spaced on the color wheel.



F55B82



9D940E



00ACA2



3492FF

Rectangle

The Rectangle color scheme consists of four colors that form a rectangle on the color wheel.



F55B82



D8792F



00ACA2



00A5F0

Sweetspot

The Sweet Spot groups the original color and five complimentary colors.



F55B82



FFCFDB



CC5BF5



80626A



000000



808080

Same Dimension

The Same Dimension uses a secret algorithm to generate beautiful new colors.



F55B82



FF4070



F57F5B



7A6E71



BA002F



3B000F

Inverse Universe

The Inverse Universe completely reimagines the original color for something new.



F55B82



FF4070



5BD1F5



7A6E71



BA002F



3B000F

Previews

White Background



This preview shows how the Hex color F55B82 looks on a white background.

Color Contrast Check

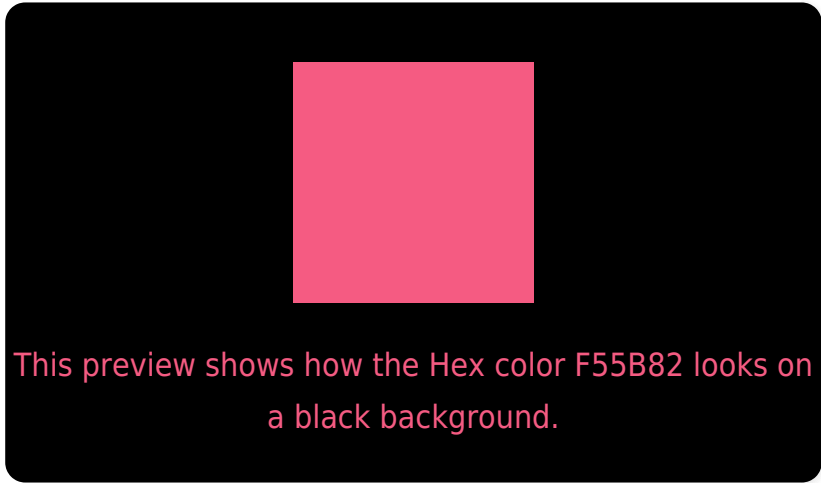
Large Text (above 18pt) WCAG AA ✓ Pass

Any Text WCAG AA × Fail

Large Text (above 18pt) WCAG AAA × Fail

Any Text WCAG AAA × Fail

Black Background



Color Contrast Check

Large Text (above 18pt) WCAG AA ✓ Pass

Any Text WCAG AA ✓ Pass

Large Text (above 18pt) WCAG AAA ✓ Pass

Any Text WCAG AAA × Fail

If you want to check with other color combinations, try the [Color Contrast Checker](#).

Hex F55B82 Background



This preview shows how black text looks on a background with the Hex color F55B82.




This preview shows how white text looks on a background with the Hex color F55B82.

Color Blindness Simulation

Color vision deficiency is a very complex topic, and I could not describe the different causes any better than Wikipedia does, so if you want to learn more, you should check out their [article about color blindness](#).

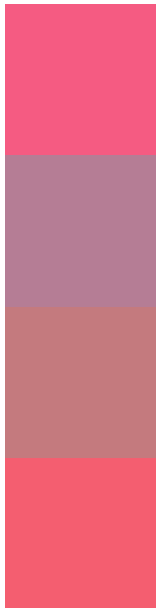
Dichromacy





Tritanopia
F36066

Trichromacy



Original Color
F55B82

Protanomaly
B57D95

Deuteranomaly
C47A7E

Tritanomaly
F45E70

Monochromacy



Original Color
F55B82

Achromatopsia
8D8D8D

Achromatomaly
B37B89

CSS Examples

Text

The CSS property to change the color of the text to Hex F55B82 is called "color". The color property can be set on classes, ids or directly on the HTML element.

This example shows how text in the color #F55B82 looks like.

```
.text, #text, p{  
    color:#F55B82  
}
```

If you want to add a text shadow in that color use the text-shadow property, you can generate a text shadow directly with our [CSS Text Shadow Generator](#).

Here you see how black text with a 4 pixel #F55B82 colored shadow looks like.

```
.shadow{ text-shadow: 4px 4px 2px #F55B82
}
```

Border

The CSS property to change the border of an element to Hex F55B82 is called "border". The border property can be set on classes, ids or directly on the HTML element.

This example shows the color as border, it can be applied via the CSS property "border" or "border-color".

```
.border, #border, table{ border:4px solid
#F55B82 }
```

If only the border color should be changed use the property `border-color`.

```
.border{ border-color:#F55B82 }
```

If you want to add a box shadow in that color use:

Here you see how a box with a 4 pixel #F55B82 colored shadow looks like.

```
.boxshadow{ -moz-box-shadow:4px 4px 4px  
4px #F55B82; -webkit-box-shadow:4px 4px  
4px 4px #F55B82; box-shadow:4px 4px 4px  
4px #F55B82 }
```

Background

The CSS property to change the background color of an element to Hex F55B82 is called "background". The background property can be set on classes, ids or directly on the HTML element.

```
.background, #background, body{  
background:#F55B82 }
```

If only the background color should be changed can be used:

```
.background{ background-color:#F55B82 }
```

This example shows the color as background, it is applied via the CSS property "background".

To optimize and compress your CSS code, you can use our [online CSS compressor and optimizer](#) based on csstidy. If you want to create a linear or radial gradient as background or border, check our [CSS Gradient Generator](#).

Hey! You found this booklet interesting? Support Converting Colors with the new Membership Option!

The pro membership hides all ads, plus gives you double the colors in the color bucket, and more awesome pro features!

[Learn more, Memberships starting at \\$2.50/m!](#)

**Follow me
on Twitter!**

@ConvertingColor