

# Converting Colors

Hex(F55D84)

Have a look what the booklet for  
Hex(F55D84) contains.

<b>Hex(F55D84)</b> .....	3
<i><b>Conversions</b></i> .....	4
<i><b>Details</b></i> .....	6
<i><b>Harmonies</b></i> .....	11
<i><b>Previews</b></i> .....	23
<i><b>Color Blindness Simulation</b></i> .....	26
<i><b>CSS Examples</b></i> .....	29

**Color**

**Hex(F55D84)**

# Conversions

## Conversions Part 1

<b>Format</b>	<b>Color</b>
Hex	F55D84
RGB	245, 93, 132
RGB Percent	96%, 36%, 52%
CMY	0.0392, 0.6353, 0.4824
CMYK	0.00, 0.62, 0.46, 0.04
HSL	345°, 88%, 66%
HSV	345°, 62%, 96%
XYZ	45.7354, 28.9071, 24.9989
YIQ	142.8940, 78.0730, 44.3530

# Conversions

## Conversions Part 2

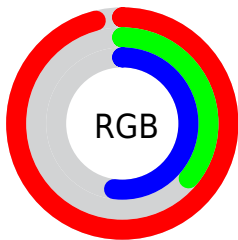
<b>Format</b>	<b>Color</b>
<b>R<sub>YB</sub></b>	245, 93, 132
Decimal	16080260
CIE <sub>Lab</sub>	60.70, 61.21, 9.77
CIE <sub>LCh</sub>	61, 61.983, 9.073
Yxy	28.9071, 0.4590, 0.2901
Android (android.graphics.Color)	4294270340 (0xFFFF55D84)
YUV	142.8940, -5.3707, 89.5470
Hunter-Lab	53.7653, 57.7514, 10.0681

# Details

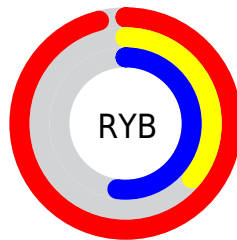
The Hex color **F55D84** is a light color, and the websafe version is hex **FF6699**. The color can be described as light muted rose. A complement of this color would be **5DF5CE**, and the grayscale version is **8F8F8F**.

A 20% lighter version of the original color is **FF96B9**, and **B81D53** is the 20% darker color. If you saturate the color by 10%, you get **F54472**, and if you desaturate by 10%, it is **F57596**.

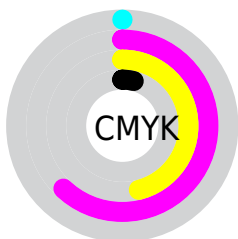
# Distribution



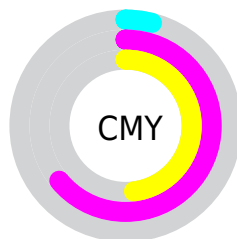
- Red (96%)
- Green (36%)
- Blue (52%)



- Red (96%)
- Yellow (36%)
- Blue (52%)



- Cyan (0%)
- Magenta (62%)
- Yellow (46%)
- Black (4%)



- Cyan (4%)
- Magenta (64%)
- Yellow (48%)

# Brightness & Saturation Gradients

These gradients show how the Hex color F55D84 changes by changing the brightness by 10 percent. The first figure shows a shift by +10% for each color and the second figure -10%.

Similar to the brightness gradients but the following saturation gradients show a change of the Hex color F55D84 by changing the saturation by 10% instead.



 F55D84

 F55D84

FFFFFF

 D6406B

 FF96B9

 B81D53

 FFB2D4

 9A003C

 FFCFF1

 7C0027

 FFEDFF

 5F0012

 440003

 230001

 000000

 F55D84

 F55D84

 F54472

 F57596

 F52C60

 F58EA8

 F5134D

 F5A6BB

 F5003F

 F5BFCD

 F5D7DF

 F5F0F1

 F5FFFF

# Harmonies

## Analogous

The Analogous color harmony consists of three colors that are next to each other on the color wheel.



E165BB



F55D84



EC6B50

# Triad

The Triadic color harmony groups three colors that are evenly spaced from another and form a triangle on the color wheel.



F55D84



63A236



00A3F8

# Complementary

The Complementary color scheme is a pair of colors which are on the opposite of each other on the color wheel.



F55D84



5DF5CE

# Split Complementary

Split-complementary colors differ from the complementary color scheme. The scheme consists of three colors, the original color and two neighbors of the complement color.



00AAD6



F55D84



00AA69

# Square

The Square scheme is like the rectangle color scheme, but the four colors are evenly spaced on the color wheel.



F55D84



9F9513



00ACA2



3593FF

# Rectangle

The Rectangle color scheme consists of four colors that form a rectangle on the color wheel.



F55D84



D97A32



00ACA2



00A6F0



# Sweetspot

The Sweet Spot groups the original color and five complimentary colors.



F55D84



FFCFDB



CC5DF5



80626A



000000



808080



# Same Dimension

The Same Dimension uses a secret algorithm to generate beautiful new colors.



F55D84



FF4273



F5805D



7A6E71



BA0030



3B000F



# Inverse Universe

The Inverse Universe completely reimagines the original color for something new.



F55D84



FF4273



5DD2F5



7A6E71



BA0030



3B000F



# Previews

## White Background



This preview shows how the Hex color F55D84 looks on a white background.

## Color Contrast Check

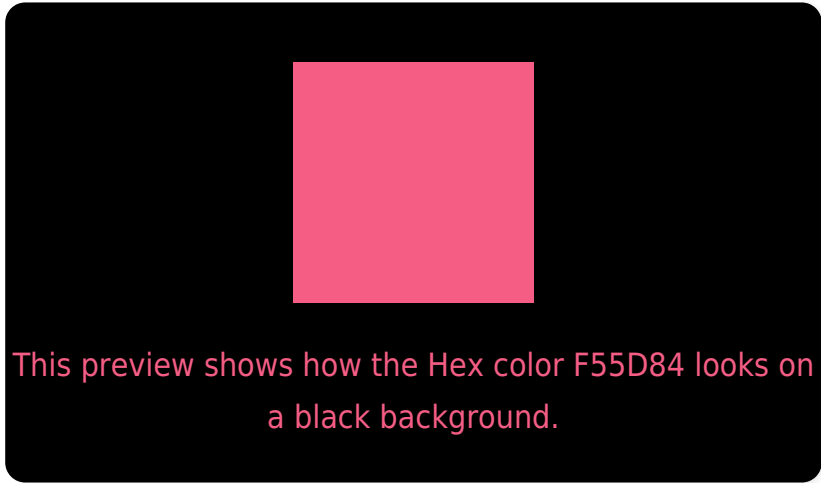
Large Text (above 18pt) WCAG AA ✓ Pass

Any Text WCAG AA × Fail

Large Text (above 18pt) WCAG AAA × Fail

Any Text WCAG AAA × Fail

# Black Background



## Color Contrast Check

Large Text (above 18pt) WCAG AA ✓ Pass

Any Text WCAG AA ✓ Pass

Large Text (above 18pt) WCAG AAA ✓ Pass

Any Text WCAG AAA × Fail

If you want to check with other color combinations, try the [Color Contrast Checker](#).



## Hex F55D84 Background



This preview shows how black text looks on a background with the Hex color F55D84.

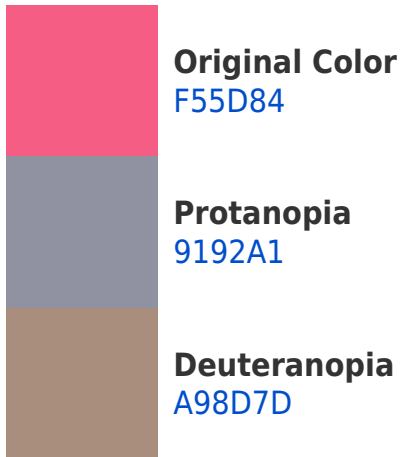



This preview shows how white text looks on a background with the Hex color F55D84.

# Color Blindness Simulation

Color vision deficiency is a very complex topic, and I could not describe the different causes any better than Wikipedia does, so if you want to learn more, you should check out their [article about color blindness](#).

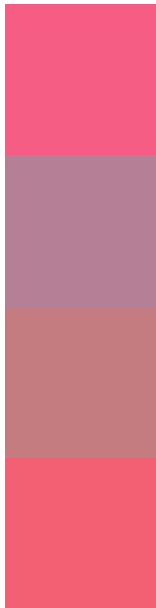
## Dichromacy





**Tritanopia**  
F36269

# Trichromacy



**Original Color**  
F55D84

**Protanomaly**  
B57F96

**Deuteranomaly**  
C57C80

**Tritanomaly**  
F46073

# Monochromacy



**Original Color**  
F55D84

**Achromatopsia**  
8F8F8F

**Achromatomaly**  
B47D8B

# CSS Examples

## Text

The CSS property to change the color of the text to Hex F55D84 is called "color". The color property can be set on classes, ids or directly on the HTML element.

This example shows how text in the color #F55D84 looks like.

```
.text, #text, p{  
    color:#F55D84  
}
```

If you want to add a text shadow in that color use the text-shadow property, you can generate a text shadow directly with our [CSS Text Shadow Generator](#).

Here you see how black text with a 4 pixel #F55D84 colored shadow looks like.

```
.shadow{ text-shadow: 4px 4px 2px #F55D84
}
```

## Border

The CSS property to change the border of an element to Hex F55D84 is called "border". The border property can be set on classes, ids or directly on the HTML element.

This example shows the color as border, it can be applied via the CSS property "border" or "border-color".

```
.border, #border, table{ border:4px solid
#F55D84 }
```

If only the border color should be changed use the property `border-color`.

```
.border{ border-color:#F55D84 }
```

If you want to add a box shadow in that color use:

Here you see how a box with a 4 pixel #F55D84 colored shadow looks like.

```
.boxshadow{ -moz-box-shadow:4px 4px 4px  
4px #F55D84; -webkit-box-shadow:4px 4px  
4px 4px #F55D84; box-shadow:4px 4px 4px  
4px #F55D84 }
```

# Background

The CSS property to change the background color of an element to Hex F55D84 is called "background". The background property can be set on classes, ids or directly on the HTML element.

```
.background, #background, body{  
background:#F55D84 }
```

If only the background color should be changed can be used:

```
.background{ background-color:#F55D84 }
```

This example shows the color as background, it is applied via the CSS property "background".

To optimize and compress your CSS code, you can use our [online CSS compressor and optimizer](#) based on csstidy. If you want to create a linear or radial gradient as background or border, check our [CSS Gradient Generator](#).



Hey! You found this booklet interesting? Support Converting Colors with the new Membership Option!

The pro membership hides all ads, plus gives you double the colors in the color bucket, and more awesome pro features!

**[Learn more, Memberships starting at \\$2.50/m!](#)**

**Follow me  
on Twitter!**

@ConvertingColor