

Converting Colors

Hex(F5607D)

Have a look what the booklet for
Hex(F5607D) contains.

Hex(F5607D)	3
<i>Conversions</i>	4
<i>Details</i>	6
<i>Harmonies</i>	11
<i>Previews</i>	23
<i>Color Blindness Simulation</i>	26
<i>CSS Examples</i>	29

Color

Hex(F5607D)

Conversions

Conversions Part 1

Format	Color
Hex	F5607D
RGB	245, 96, 125
RGB Percent	96%, 38%, 49%
CMY	0.0392, 0.6235, 0.5098
CMYK	0.00, 0.61, 0.49, 0.04
HSL	348°, 88%, 67%
HSV	348°, 61%, 96%
XYZ	45.5407, 29.2589, 22.6493
YIQ	143.8570, 79.4950, 40.6070

Conversions

Conversions Part 2

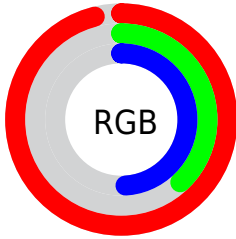
Format	Color
R _Y B	245, 96, 125
Decimal	16081021
CIE Lab	61.01, 59.32, 14.27
CIE LCh	61, 61.008, 13.529
Yxy	29.2589, 0.4673, 0.3002
Android (android.graphics.Color)	4294271101 (0xFFFF5607D)
YUV	143.8570, -9.2965, 88.7024
Hunter-Lab	54.0915, 55.6227, 13.0380

Details

The Hex color **F5607D** is a light color, and the websafe version is hex **FF6699**. A complement of this color would be **60F5D8**, and the grayscale version is **909090**.

A 20% lighter version of the original color is **FF98B1**, and **B8234C** is the 20% darker color. If you saturate the color by 10%, you get **F54869**, and if you desaturate by 10%, it is **F57991**.

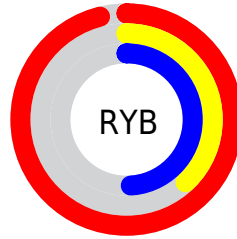
Distribution



Red (96%)

Green (38%)

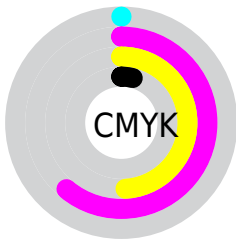
Blue (49%)



Red (96%)

Yellow (38%)

Blue (49%)

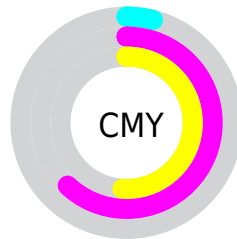


Cyan (0%)

Magenta (61%)

Yellow (49%)

Black (4%)



Cyan (4%)

Magenta (62%)

Yellow (51%)

Brightness & Saturation Gradients

These gradients show how the Hex color F5607D changes by changing the brightness by 10 percent. The first figure shows a shift by +10% for each color and the second figure -10%.

Similar to the brightness gradients but the following saturation gradients show a change of the Hex color F5607D by changing the saturation by 10% instead.

 F5607D

 F5607D

FFFFFF

 D64364

 FF98B1

 B8234C

 FFB5CD

 990036

 FFD2E9

 7C0021

 FFEFFF

 5E000B

 430003

 220001

 000000

 F5607D

 F5607D

 F54869

 F57991

 F52F56

 F591A4

 F51642

 F5AAB8

 F50030

 F5C2CC

 F5DBE0

 F5F3F3

 F5FFFF

Harmonies

Analogous

The Analogous color harmony consists of three colors that are next to each other on the color wheel.



E665B3



F5607D



E9704B

Triad

The Triadic color harmony groups three colors that are evenly spaced from another and form a triangle on the color wheel.



F5607D



5BA440



00A2FA

Complementary

The Complementary color scheme is a pair of colors which are on the opposite of each other on the color wheel.



F5607D



60F5D8

Split Complementary

Split-complementary colors differ from the complementary color scheme. The scheme consists of three colors, the original color and two neighbors of the complement color.



00AADC



F5607D



00AB73

Square

The Square scheme is like the rectangle color scheme, but the four colors are evenly spaced on the color wheel.



F5607D



98981B



00ADAB



5591FC

Rectangle

The Rectangle color scheme consists of four colors that form a rectangle on the color wheel.



F5607D



D47E2F



00ADAB



00A5F3

Sweetspot

The Sweet Spot groups the original color and five complimentary colors.



F5607D



FFD1DA



D760F5



806369



000000



808080

Same Dimension

The Same Dimension uses a secret algorithm to generate beautiful new colors.



F5607D



FF4569



F58D60



7A6E71



BA0024



3B000B

Inverse Universe

The Inverse Universe completely reimagines the original color for something new.



F5607D



FF4569



60C8F5



7A6E71



BA0024



3B000B

Previews

White Background



This preview shows how the Hex color F5607D looks on a white background.

Color Contrast Check

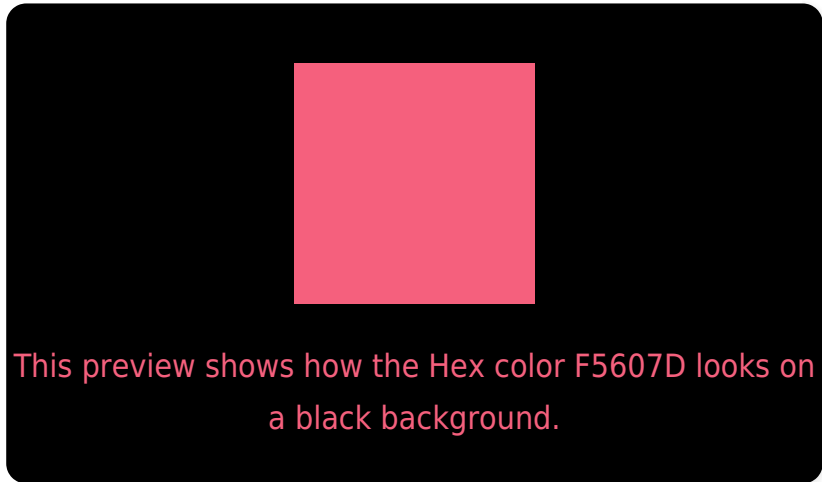
Large Text (above 18pt) WCAG AA ✓ Pass

Any Text WCAG AA × Fail

Large Text (above 18pt) WCAG AAA × Fail

Any Text WCAG AAA × Fail

Black Background



Color Contrast Check

Large Text (above 18pt) WCAG AA ✓ Pass

Any Text WCAG AA ✓ Pass

Large Text (above 18pt) WCAG AAA ✓ Pass

Any Text WCAG AAA × Fail

If you want to check with other color combinations, try the [Color Contrast Checker](#).

Hex F5607D Background



This preview shows how black text looks on a background with the Hex color F5607D.

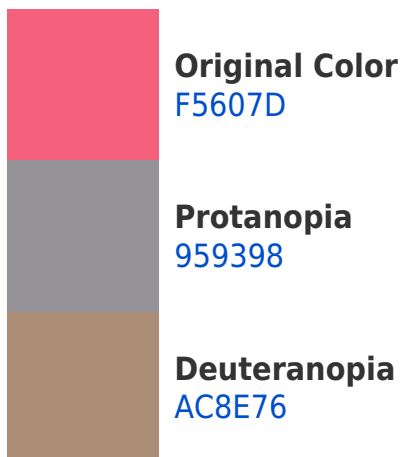


This preview shows how white text looks on a background with the Hex color F5607D.

Color Blindness Simulation

Color vision deficiency is a very complex topic, and I could not describe the different causes any better than Wikipedia does, so if you want to learn more, you should check out their [article about color blindness](#).

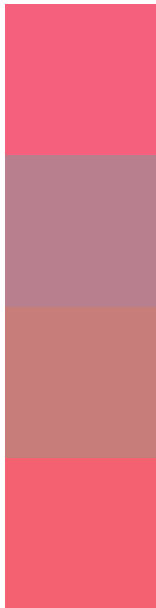
Dichromacy





Tritanopia
F4636A

Trichromacy



Original Color
F5607D

Protanomaly
B8808E

Deuteranomaly
C77D79

Tritanomaly
F46271

Monochromacy



Original Color
F5607D

Achromatopsia
909090

Achromatomaly
B57F89

CSS Examples

Text

The CSS property to change the color of the text to Hex F5607D is called "color". The color property can be set on classes, ids or directly on the HTML element.

This example shows how text in the color #F5607D looks like.

```
.text, #text, p{  
    color:#F5607D  
}
```

If you want to add a text shadow in that color use the text-shadow property, you can generate a text shadow directly with our [CSS Text Shadow Generator](#).

Here you see how black text with a 4 pixel #F5607D colored shadow looks like.

```
.shadow{ text-shadow: 4px 4px 2px #F5607D
}
```

Border

The CSS property to change the border of an element to Hex F5607D is called "border". The border property can be set on classes, ids or directly on the HTML element.

This example shows the color as border, it can be applied via the CSS property "border" or "border-color".

```
.border, #border, table{ border:4px solid
#F5607D }
```

If only the border color should be changed use the property `border-color`.

```
.border{ border-color:#F5607D }
```

If you want to add a box shadow in that color use:

Here you see how a box with a 4 pixel #F5607D colored shadow looks like.

```
.boxshadow{ -moz-box-shadow:4px 4px 4px  
4px #F5607D; -webkit-box-shadow:4px 4px  
4px 4px #F5607D; box-shadow:4px 4px 4px  
4px #F5607D }
```

Background

The CSS property to change the background color of an element to Hex F5607D is called "background". The background property can be set on classes, ids or directly on the HTML element.

```
.background, #background, body{  
background:#F5607D }
```

If only the background color should be changed can be used:

```
.background{ background-color:#F5607D }
```

This example shows the color as background, it is applied via the CSS property "background".

To optimize and compress your CSS code, you can use our [online CSS compressor and optimizer](#) based on csstidy. If you want to create a linear or radial gradient as background or border, check our [CSS Gradient Generator](#).

Hey! You found this booklet interesting? Support Converting Colors with the new Membership Option!

The pro membership hides all ads, plus gives you double the colors in the color bucket, and more awesome pro features!

[Learn more, Memberships starting at \\$2.50/m!](#)

**Follow me
on Twitter!**

@ConvertingColor