

Converting Colors

Hex(F57FA1)

Have a look what the booklet for
Hex(F57FA1) contains.

Hex(F57FA1)	3
<i>Conversions</i>	4
<i>Details</i>	6
<i>Harmonies</i>	11
<i>Previews</i>	23
<i>Color Blindness Simulation</i>	26
<i>CSS Examples</i>	29

Color

Hex(F57FA1)

Conversions

Conversions Part 1

Format	Color
Hex	F57FA1
RGB	245, 127, 161
RGB Percent	96%, 50%, 63%
CMY	0.0392, 0.5020, 0.3686
CMYK	0.00, 0.48, 0.34, 0.04
HSL	343°, 86%, 73%
HSV	343°, 48%, 96%
XYZ	51.6786, 37.1644, 38.1679
YIQ	166.1580, 59.4140, 35.5900

Conversions

Conversions Part 2

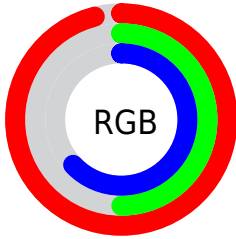
Format	Color
R _Y B	245, 127, 161
Decimal	16088993
CIE Lab	67.40, 48.61, 2.77
CIE LCh	67, 48.690, 3.267
Yxy	37.1644, 0.4069, 0.2926
Android (android.graphics.Color)	4294279073 (0xFFFF57FA1)
YUV	166.1580, -2.5429, 69.1444
Hunter-Lab	60.9626, 44.6315, 5.5532

Details

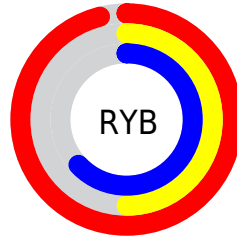
The Hex color **F57FA1** is a light color, and the websafe version is hex **FF6699**. A complement of this color would be **7FF5D3**, and the grayscale version is **A6A6A6**.

A 20% lighter version of the original color is **FFB6D8**, and **BA496E** is the 20% darker color. If you saturate the color by 10%, you get **F56790**, and if you desaturate by 10%, it is **F598B2**.

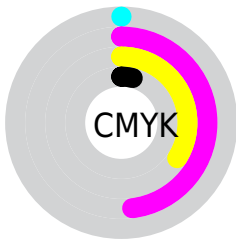
Distribution



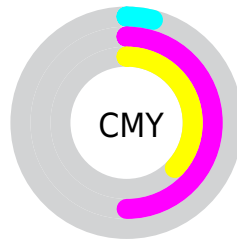
- Red (96%)
- Green (50%)
- Blue (63%)



- Red (96%)
- Yellow (50%)
- Blue (63%)



- Cyan (0%)
- Magenta (48%)
- Yellow (34%)
- Black (4%)



- Cyan (4%)
- Magenta (50%)
- Yellow (37%)

Brightness & Saturation Gradients

These gradients show how the Hex color F57FA1 changes by changing the brightness by 10 percent. The first figure shows a shift by +10% for each color and the second figure -10%.

Similar to the brightness gradients but the following saturation gradients show a change of the Hex color F57FA1 by changing the saturation by 10% instead.

 F57FA1

 F57FA1

FFFFFF

 D76487

 FFB6D8

 BA496E

 FFD3F4

 9D2E55

 FFF0FF

 800D3E

 640029

 490014

 300002

 000000

 F57FA1

 F57FA1

 F56790

 F598B2

 F54E7E

 F5B0C4

 F5366D

 F5C9D5

 F51D5B

 F5E1E7

 F5054A

 F5FAF8

 F50047

 F5FFFF

Harmonies

Analogous

The Analogous color harmony consists of three colors that are next to each other on the color wheel.



DE87CC



F57FA1



F38576

Triad

The Triadic color harmony groups three colors that are evenly spaced from another and form a triangle on the color wheel.



F57FA1



8CB058



00B3F2

Complementary

The Complementary color scheme is a pair of colors which are on the opposite of each other on the color wheel.



F57FA1



7FF5D3

Split Complementary

Split-complementary colors differ from the complementary color scheme. The scheme consists of three colors, the original color and two neighbors of the complement color.



00B9D3



F57FA1



51B77B

Square

The Square scheme is like the rectangle color scheme, but the four colors are evenly spaced on the color wheel.



F57FA1



BAA349



00BAA8



60A7FB

Rectangle

The Rectangle color scheme consists of four colors that form a rectangle on the color wheel.



F57FA1



E78E5F



00BAA8



00B6E9

Sweetspot

The Sweet Spot groups the original color and five complimentary colors.



F57FA1



FFDBE6



D27FF5



806A70



000000



808080

Same Dimension

The Same Dimension uses a secret algorithm to generate beautiful new colors.



F57FA1



FF6B96



F5977F



7A6E72



BA0036



3B0011

Inverse Universe

The Inverse Universe completely reimagines the original color for something new.



F57FA1



FF6B96



7FDDF5



7A6E72



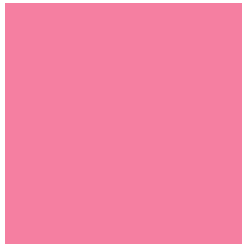
BA0036



3B0011

Previews

White Background



This preview shows how the Hex color F57FA1 looks on a white background.

Color Contrast Check

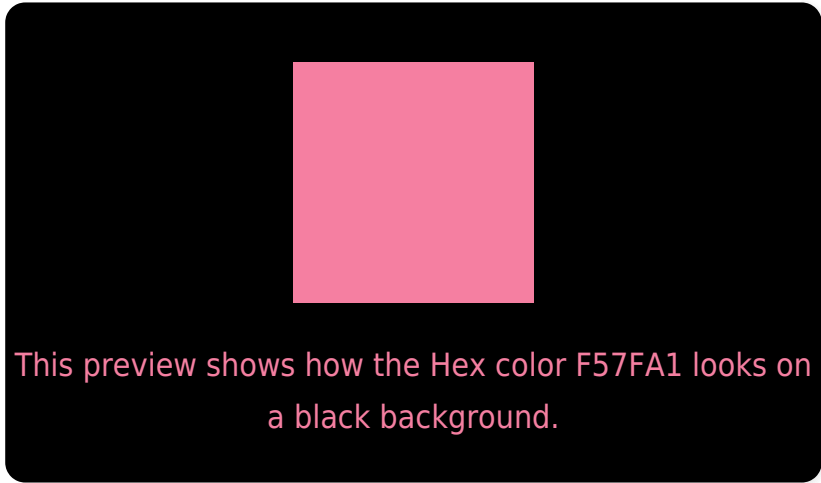
Large Text (above 18pt) WCAG AA × Fail

Any Text WCAG AA × Fail

Large Text (above 18pt) WCAG AAA × Fail

Any Text WCAG AAA × Fail

Black Background



Color Contrast Check

Large Text (above 18pt) WCAG AA ✓ Pass

Any Text WCAG AA ✓ Pass

Large Text (above 18pt) WCAG AAA ✓ Pass

Any Text WCAG AAA ✓ Pass

If you want to check with other color combinations, try the [Color Contrast Checker](#).

Hex F57FA1 Background



This preview shows how black text looks on a background with the Hex color F57FA1.



This preview shows how white text looks on a background with the Hex color F57FA1.

Color Blindness Simulation

Color vision deficiency is a very complex topic, and I could not describe the different causes any better than Wikipedia does, so if you want to learn more, you should check out their [article about color blindness](#).

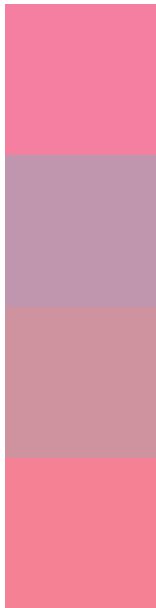
Dichromacy





Tritanopia
F3838C

Trichromacy



Original Color
F57FA1

Protanomaly
C096AE

Deuteranomaly
CE939E

Tritanomaly
F48294

Monochromacy



Original Color
F57FA1

Achromatopsia
A6A6A6

Achromatomaly
C398A4

CSS Examples

Text

The CSS property to change the color of the text to Hex F57FA1 is called "color". The color property can be set on classes, ids or directly on the HTML element.

This example shows how text in the color #F57FA1 looks like.

```
.text, #text, p{  
    color:#F57FA1  
}
```

If you want to add a text shadow in that color use the text-shadow property, you can generate a text shadow directly with our [CSS Text Shadow Generator](#).

Here you see how black text with a 4 pixel #F57FA1 colored shadow looks like.

```
.shadow{ text-shadow: 4px 4px 2px #F57FA1
}
```

Border

The CSS property to change the border of an element to Hex F57FA1 is called "border". The border property can be set on classes, ids or directly on the HTML element.

This example shows the color as border, it can be applied via the CSS property "border" or "border-color".

```
.border, #border, table{ border:4px solid
#F57FA1 }
```

If only the border color should be changed use the property `border-color`.

```
.border{ border-color:#F57FA1 }
```

If you want to add a box shadow in that color use:

Here you see how a box with a 4 pixel #F57FA1 colored shadow looks like.

```
.boxshadow{ -moz-box-shadow:4px 4px 4px  
4px #F57FA1; -webkit-box-shadow:4px 4px  
4px 4px #F57FA1; box-shadow:4px 4px 4px  
4px #F57FA1 }
```

Background

The CSS property to change the background color of an element to Hex F57FA1 is called "background". The background property can be set on classes, ids or directly on the HTML element.

```
.background, #background, body{  
background:#F57FA1 }
```

If only the background color should be changed can be used:

```
.background{ background-color:#F57FA1 }
```

This example shows the color as background, it is applied via the CSS property "background".

To optimize and compress your CSS code, you can use our [online CSS compressor and optimizer](#) based on csstidy. If you want to create a linear or radial gradient as background or border, check our [CSS Gradient Generator](#).

Hey! You found this booklet interesting? Support Converting Colors with the new Membership Option!

The pro membership hides all ads, plus gives you double the colors in the color bucket, and more awesome pro features!

[Learn more, Memberships starting at \\$2.50/m!](#)

**Follow me
on Twitter!**

@ConvertingColor