

Converting Colors

Hex(F5829D)

Have a look what the booklet for
Hex(F5829D) contains.

Hex(F5829D)	3
<i>Conversions</i>	4
<i>Details</i>	6
<i>Harmonies</i>	11
<i>Previews</i>	23
<i>Color Blindness Simulation</i>	26
<i>CSS Examples</i>	29

Color

Hex(F5829D)

Conversions

Conversions Part 1

Format	Color
Hex	F5829D
RGB	245, 130, 157
RGB Percent	96%, 51%, 62%
CMY	0.0392, 0.4902, 0.3843
CMYK	0.00, 0.47, 0.36, 0.04
HSL	346°, 85%, 74%
HSV	346°, 47%, 96%
XYZ	51.7246, 37.8121, 36.4706
YIQ	167.4630, 59.8730, 32.7770

Conversions

Conversions Part 2

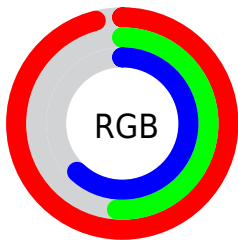
Format	Color
R_{YB}	245, 130, 157
Decimal	16089757
CIE _{Lab}	67.88, 46.66, 5.73
CIE _{LCh}	68, 47.006, 6.999
Yxy	37.8121, 0.4105, 0.3001
Android (android.graphics.Color)	4294279837 (0xFFFF5829D)
YUV	167.4630, -5.1583, 67.9999
Hunter-Lab	61.4915, 42.5381, 7.8792

Details

The Hex color **F5829D** is a light color, and the websafe version is hex **FF9999**. A complement of this color would be **82F5DA**, and the grayscale version is **A7A7A7**.

A 20% lighter version of the original color is **FFB9D3**, and **BA4D6A** is the 20% darker color. If you saturate the color by 10%, you get **F56A8A**, and if you desaturate by 10%, it is **F59BB0**.

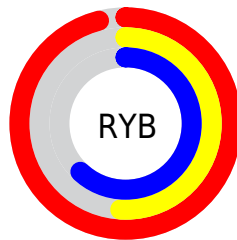
Distribution



Red (96%)

Green (51%)

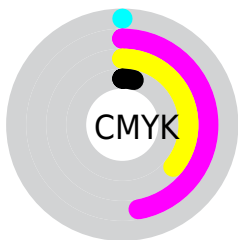
Blue (62%)



Red (96%)

Yellow (51%)

Blue (62%)

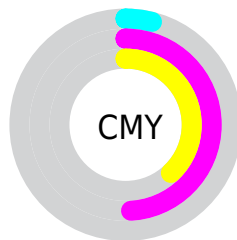


Cyan (0%)

Magenta (47%)

Yellow (36%)

Black (4%)



Cyan (4%)

Magenta (49%)

Yellow (38%)

Brightness & Saturation Gradients

These gradients show how the Hex color F5829D changes by changing the brightness by 10 percent. The first figure shows a shift by +10% for each color and the second figure -10%.

Similar to the brightness gradients but the following saturation gradients show a change of the Hex color F5829D by changing the saturation by 10% instead.

 F5829D

 F5829D

FFFFFF

 D76783

 FFB9D3

 BA4D6A

 FFD6F0

 9D3252

 FFF3FF

 80143B

 640026

 490011

 300002

 000000

 F5829D

 F5829D

 F56A8A

 F59BB0

 F55178

 F5B3C2

 F53865

 F5CBD5

 F52052

 F5E4E8

 F5073F

 F5FCFB

 F5003A

 F5FFFF

Harmonies

Analogous

The Analogous color harmony consists of three colors that are next to each other on the color wheel.



E288C7



F5829D



F18975

Triad

The Triadic color harmony groups three colors that are evenly spaced from another and form a triangle on the color wheel.



F5829D



88B25F



00B3F3

Complementary

The Complementary color scheme is a pair of colors which are on the opposite of each other on the color wheel.



F5829D



82F5DA

Split Complementary

Split-complementary colors differ from the complementary color scheme. The scheme consists of three colors, the original color and two neighbors of the complement color.



00B9D7



F5829D



4EB983

Square

The Square scheme is like the rectangle color scheme, but the four colors are evenly spaced on the color wheel.



F5829D



B6A64F



00BBAE



71A6F9

Rectangle

The Rectangle color scheme consists of four colors that form a rectangle on the color wheel.



F5829D



E3925F



00BBAE



00B6EC

Sweetspot

The Sweet Spot groups the original color and five complimentary colors.



F5829D



FFDBE4



D882F5



806A6F



000000



808080

Same Dimension

The Same Dimension uses a secret algorithm to generate beautiful new colors.



F5829D



FF7092



F59F82



7A6E71



BA002C



3B000E

Inverse Universe

The Inverse Universe completely reimagines the original color for something new.



F5829D



FF7092



82D8F5



7A6E71



BA002C



3B000E

Previews

White Background



This preview shows how the Hex color F5829D looks on a white background.

Color Contrast Check

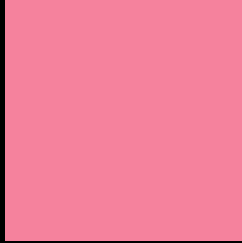
Large Text (above 18pt) WCAG AA × Fail

Any Text WCAG AA × Fail

Large Text (above 18pt) WCAG AAA × Fail

Any Text WCAG AAA × Fail

Black Background



This preview shows how the Hex color F5829D looks on a black background.

Color Contrast Check

Large Text (above 18pt) WCAG AA ✓ Pass

Any Text WCAG AA ✓ Pass

Large Text (above 18pt) WCAG AAA ✓ Pass

Any Text WCAG AAA ✓ Pass

If you want to check with other color combinations, try the [Color Contrast Checker](#).

Hex F5829D Background



This preview shows how black text looks on a background with the Hex color F5829D.



This preview shows how white text looks on a background with the Hex color F5829D.

Color Blindness Simulation

Color vision deficiency is a very complex topic, and I could not describe the different causes any better than Wikipedia does, so if you want to learn more, you should check out their [article about color blindness](#).

Dichromacy



Original Color
F5829D

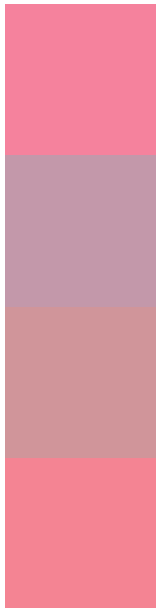
Protanopia
A6A5B1

Deuteranopia
BBA098



Tritanopia
F4858E

Trichromacy



Original Color
F5829D

Protanomaly
C398AA

Deuteranomaly
D0959A

Tritanomaly
F48493

Monochromacy



Original Color
F5829D

Achromatopsia
A7A7A7

Achromatomaly
C39AA3

CSS Examples

Text

The CSS property to change the color of the text to Hex F5829D is called "color". The color property can be set on classes, ids or directly on the HTML element.

This example shows how text in the color #F5829D looks like.

```
.text, #text, p{  
    color:#F5829D  
}
```

If you want to add a text shadow in that color use the text-shadow property, you can generate a text shadow directly with our [CSS Text Shadow Generator](#).

Here you see how black text with a 4 pixel #F5829D colored shadow looks like.

```
.shadow{ text-shadow: 4px 4px 2px #F5829D
}
```

Border

The CSS property to change the border of an element to Hex F5829D is called "border". The border property can be set on classes, ids or directly on the HTML element.

This example shows the color as border, it can be applied via the CSS property "border" or "border-color".

```
.border, #border, table{ border:4px solid
#F5829D }
```

If only the border color should be changed use the property `border-color`.

```
.border{ border-color:#F5829D }
```

If you want to add a box shadow in that color use:

Here you see how a box with a 4 pixel #F5829D colored shadow looks like.

```
.boxshadow{ -moz-box-shadow:4px 4px 4px  
4px #F5829D; -webkit-box-shadow:4px 4px  
4px 4px #F5829D; box-shadow:4px 4px 4px  
4px #F5829D }
```

Background

The CSS property to change the background color of an element to Hex F5829D is called "background". The background property can be set on classes, ids or directly on the HTML element.

```
.background, #background, body{  
background:#F5829D }
```

If only the background color should be changed can be used:

```
.background{ background-color:#F5829D }
```

This example shows the color as background, it is applied via the CSS property "background".

To optimize and compress your CSS code, you can use our [online CSS compressor and optimizer](#) based on csstidy. If you want to create a linear or radial gradient as background or border, check our [CSS Gradient Generator](#).

Hey! You found this booklet interesting? Support Converting Colors with the new Membership Option!

The pro membership hides all ads, plus gives you double the colors in the color bucket, and more awesome pro features!

[Learn more, Memberships starting at \\$2.50/m!](#)

**Follow me
on Twitter!**

@ConvertingColor