

Converting Colors

Hex(F587A1)

Have a look what the booklet for
Hex(F587A1) contains.

Hex(F587A1)	3
<i>Conversions</i>	4
<i>Details</i>	6
<i>Harmonies</i>	11
<i>Previews</i>	23
<i>Color Blindness Simulation</i>	26
<i>CSS Examples</i>	29

Color

Hex(F587A1)

Conversions

Conversions Part 1

Format	Color
Hex	F587A1
RGB	245, 135, 161
RGB Percent	96%, 53%, 63%
CMY	0.0392, 0.4706, 0.3686
CMYK	0.00, 0.45, 0.34, 0.04
HSL	346°, 85%, 75%
HSV	346°, 45%, 96%
XYZ	52.7532, 39.3136, 38.5261
YIQ	170.8540, 57.2140, 31.4060

Conversions

Conversions Part 2

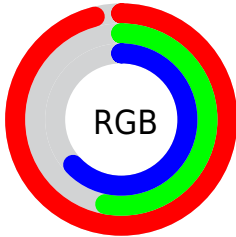
Format	Color
R_{YB}	245, 135, 161
Decimal	16091041
CIE Lab	68.98, 44.62, 5.06
CIE LCh	69, 44.905, 6.464
Yxy	39.3136, 0.4040, 0.3010
Android (android.graphics.Color)	4294281121 (0xFFFF587A1)
YUV	170.8540, -4.8580, 65.0260
Hunter-Lab	62.7006, 40.4551, 7.4599

Details

The Hex color **F587A1** is a light color, and the websafe version is hex **FF9999**. A complement of this color would be **87F5DB**, and the grayscale version is **ABABAB**.

A 20% lighter version of the original color is **FFBED8**, and **BA526E** is the 20% darker color. If you saturate the color by 10%, you get **F56E8E**, and if you desaturate by 10%, it is **F5A0B4**.

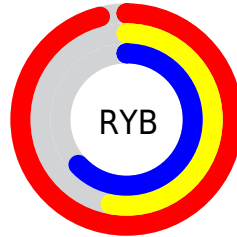
Distribution



Red (96%)

Green (53%)

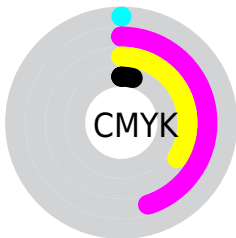
Blue (63%)



Red (96%)

Yellow (53%)

Blue (63%)

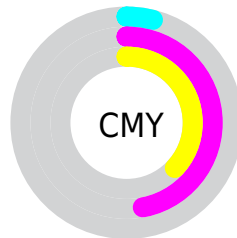


Cyan (0%)

Magenta (45%)

Yellow (34%)

Black (4%)



Cyan (4%)

Magenta (47%)

Yellow (37%)

Brightness & Saturation Gradients

These gradients show how the Hex color F587A1 changes by changing the brightness by 10 percent. The first figure shows a shift by +10% for each color and the second figure -10%.

Similar to the brightness gradients but the following saturation gradients show a change of the Hex color F587A1 by changing the saturation by 10% instead.

 F587A1

 F587A1

FFFFFF

 D76C87


 FFBED8

 BA526E

 FFDBF4

 9D3855

 FFF8FF

 811C3E

 650029

 4A0014

 320002

 000000

 F587A1

 F587A1

 F56E8E

 F5A0B4

 F5567C

 F5B8C6

 F53E69

 F5D1D9

 F52556

 F5E9EC

 F50D43

 F5FFFF

 F5003A

Harmonies

Analogous

The Analogous color harmony consists of three colors that are next to each other on the color wheel.



E28CCA



F587A1



F28D7A

Triad

The Triadic color harmony groups three colors that are evenly spaced from another and form a triangle on the color wheel.



F587A1



8EB465



00B5F2

Complementary

The Complementary color scheme is a pair of colors which are on the opposite of each other on the color wheel.



F587A1



87F5DB

Split Complementary

Split-complementary colors differ from the complementary color scheme. The scheme consists of three colors, the original color and two neighbors of the complement color.



00BCD7



F587A1



58BB86

Square

The Square scheme is like the rectangle color scheme, but the four colors are evenly spaced on the color wheel.



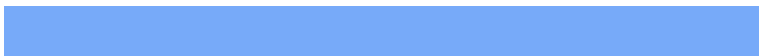
F587A1



B9A956



00BEB0



77AAF9

Rectangle

The Rectangle color scheme consists of four colors that form a rectangle on the color wheel.



F587A1



E59666



00BEB0



00B8EB

Sweetspot

The Sweet Spot groups the original color and five complimentary colors.



F587A1



FFDEE6



DA87F5



806B70



000000



808080

Same Dimension

The Same Dimension uses a secret algorithm to generate beautiful new colors.



F587A1



FF7596



F5A387



7A6E71



BA002C



3B000E

Inverse Universe

The Inverse Universe completely reimagines the original color for something new.



F587A1



FF7596



87DAF5



7A6E71



BA002C



3B000E

Previews

White Background



This preview shows how the Hex color F587A1 looks on a white background.

Color Contrast Check

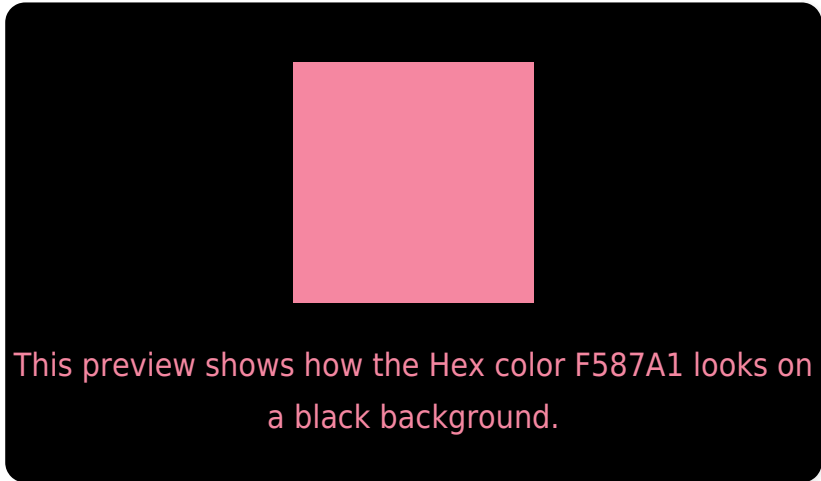
Large Text (above 18pt) WCAG AA × Fail

Any Text WCAG AA × Fail

Large Text (above 18pt) WCAG AAA × Fail

Any Text WCAG AAA × Fail

Black Background



Color Contrast Check

Large Text (above 18pt) WCAG AA ✓ Pass

Any Text WCAG AA ✓ Pass

Large Text (above 18pt) WCAG AAA ✓ Pass

Any Text WCAG AAA ✓ Pass

If you want to check with other color combinations, try the [Color Contrast Checker](#).

Hex F587A1 Background



This preview shows how black text looks on a background with the Hex color F587A1.



This preview shows how white text looks on a background with the Hex color F587A1.

Color Blindness Simulation

Color vision deficiency is a very complex topic, and I could not describe the different causes any better than Wikipedia does, so if you want to learn more, you should check out their [article about color blindness](#).

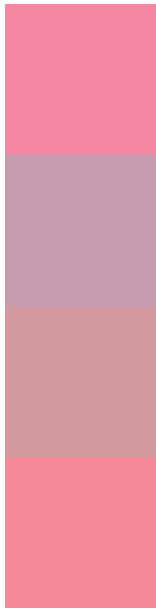
Dichromacy





Tritanopia
F48993

Trichromacy



Original Color
F587A1

Protanomaly
C59CAD

Deuteranomaly
D2999E

Tritanomaly
F48898

Monochromacy



Original Color
F587A1

Achromatopsia
ABABAB

Achromatomaly
C69EA7

CSS Examples

Text

The CSS property to change the color of the text to Hex F587A1 is called "color". The color property can be set on classes, ids or directly on the HTML element.

This example shows how text in the color #F587A1 looks like.

```
.text, #text, p{  
    color:#F587A1  
}
```

If you want to add a text shadow in that color use the text-shadow property, you can generate a text shadow directly with our [CSS Text Shadow Generator](#).

Here you see how black text with a 4 pixel #F587A1 colored shadow looks like.

```
.shadow{ text-shadow: 4px 4px 2px #F587A1
}
```

Border

The CSS property to change the border of an element to Hex F587A1 is called "border". The border property can be set on classes, ids or directly on the HTML element.

This example shows the color as border, it can be applied via the CSS property "border" or "border-color".

```
.border, #border, table{ border:4px solid
#F587A1 }
```

If only the border color should be changed use the property `border-color`.

```
.border{ border-color:#F587A1 }
```

If you want to add a box shadow in that color use:

Here you see how a box with a 4 pixel #F587A1 colored shadow looks like.

```
.boxshadow{ -moz-box-shadow:4px 4px 4px  
4px #F587A1; -webkit-box-shadow:4px 4px  
4px 4px #F587A1; box-shadow:4px 4px 4px  
4px #F587A1 }
```

Background

The CSS property to change the background color of an element to Hex F587A1 is called "background". The background property can be set on classes, ids or directly on the HTML element.

```
.background, #background, body{  
background:#F587A1 }
```

If only the background color should be changed can be used:

```
.background{ background-color:#F587A1 }
```

This example shows the color as background, it is applied via the CSS property "background".

To optimize and compress your CSS code, you can use our [online CSS compressor and optimizer](#) based on csstidy. If you want to create a linear or radial gradient as background or border, check our [CSS Gradient Generator](#).

Hey! You found this booklet interesting? Support Converting Colors with the new Membership Option!

The pro membership hides all ads, plus gives you double the colors in the color bucket, and more awesome pro features!

[Learn more, Memberships starting at \\$2.50/m!](#)

**Follow me
on Twitter!**

@ConvertingColor