

Converting Colors

Hex(F59678)

Have a look what the booklet for
Hex(F59678) contains.

Hex(F59678)	3
<i>Conversions</i>	4
<i>Details</i>	6
<i>Harmonies</i>	11
<i>Previews</i>	23
<i>Color Blindness Simulation</i>	26
<i>CSS Examples</i>	29

Color

Hex(F59678)

Conversions

Conversions Part 1

Format	Color
Hex	F59678
RGB	245, 150, 120
RGB Percent	96%, 59%, 47%
CMY	0.0392, 0.4118, 0.5294
CMYK	0.00, 0.39, 0.51, 0.04
HSL	14°, 86%, 72%
HSV	14°, 51%, 96%
XYZ	51.9527, 42.5812, 23.2501
YIQ	174.9850, 66.2500, 10.8100

Conversions

Conversions Part 2

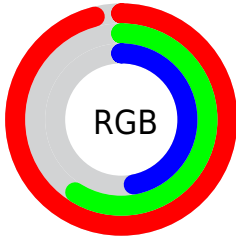
Format	Color
R _Y B	245, 159, 120
Decimal	16094840
CIE Lab	71.27, 32.65, 30.92
CIE LCh	71, 44.971, 43.443
Yxy	42.5812, 0.4411, 0.3615
Android (android.graphics.Color)	4294284920 (0xFFFF59678)
YUV	174.9850, -27.1076, 61.4032
Hunter-Lab	65.2543, 27.9191, 24.5530

Details

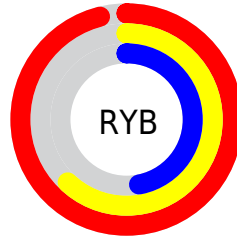
The Hex color **F59678** is a light color, and the websafe version is hex **FF9966**. A complement of this color would be **78D7F5**, and the grayscale version is **AFAFAF**.

A 20% lighter version of the original color is **FFCDAD**, and **B96247** is the 20% darker color. If you saturate the color by 10%, you get **F58360**, and if you desaturate by 10%, it is **F5A991**.

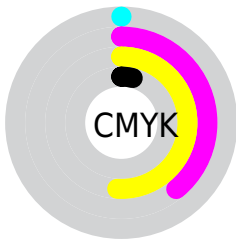
Distribution



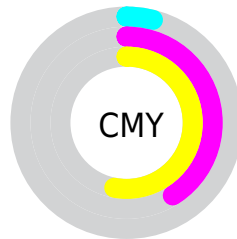
- Red (96%)
- Green (59%)
- Blue (47%)



- Red (96%)
- Yellow (62%)
- Blue (47%)



- Cyan (0%)
- Magenta (39%)
- Yellow (51%)
- Black (4%)



- Cyan (4%)
- Magenta (41%)
- Yellow (53%)

Brightness & Saturation Gradients

These gradients show how the Hex color F59678 changes by changing the brightness by 10 percent. The first figure shows a shift by +10% for each color and the second figure -10%.

Similar to the brightness gradients but the following saturation gradients show a change of the Hex color F59678 by changing the saturation by 10% instead.

 F59678

 F59678

FFFFFF

 D77C5F

 FFCDAD

 B96247

 FFE9C8

 9C4930

 FFFFE4

 7F311A

 631802

 470000

 2F0001

 000000

 F59678

 F59678

 F58360

 F5A991

 F57147

 F5BBA9

 F55E2F

 F5CEC2

 F54C16

 F5E0DA

 F53B00

 F5F3F3

 F5FFFF

Harmonies

Analogous

The Analogous color harmony consists of three colors that are next to each other on the color wheel.



FD8E9D



F59678



DBA460

Triad

The Triadic color harmony groups three colors that are evenly spaced from another and form a triangle on the color wheel.



F59678



4FC296



8EACFE

Complementary

The Complementary color scheme is a pair of colors which are on the opposite of each other on the color wheel.



F59678



78D7F5

Split Complementary

Split-complementary colors differ from the complementary color scheme. The scheme consists of three colors, the original color and two neighbors of the complement color.



35B9FC



F59678



00C4C0

Square

The Square scheme is like the rectangle color scheme, but the four colors are evenly spaced on the color wheel.



F59678



89BC71



00C1E6



CA9DEA

Rectangle

The Rectangle color scheme consists of four colors that form a rectangle on the color wheel.



F59678



C4AE5B



00C1E6



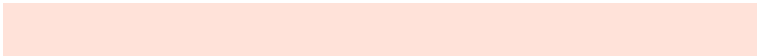
75B1FF

Sweetspot

The Sweet Spot groups the original color and five complimentary colors.



F59678



FFE2D9



F578D8



806E69



000000



808080

Same Dimension

The Same Dimension uses a secret algorithm to generate beautiful new colors.



F59678



FF8963



F5D478



7A716E



BA2D00



3B0E00

Inverse Universe

The Inverse Universe completely reimagines the original color for something new.



78D7F5



63DAFF



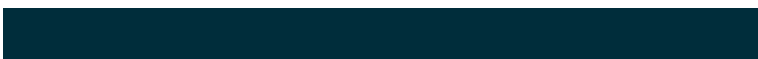
7899F5



6E777A



008DBA



002D3B

Previews

White Background



This preview shows how the Hex color F59678 looks on a white background.

Color Contrast Check

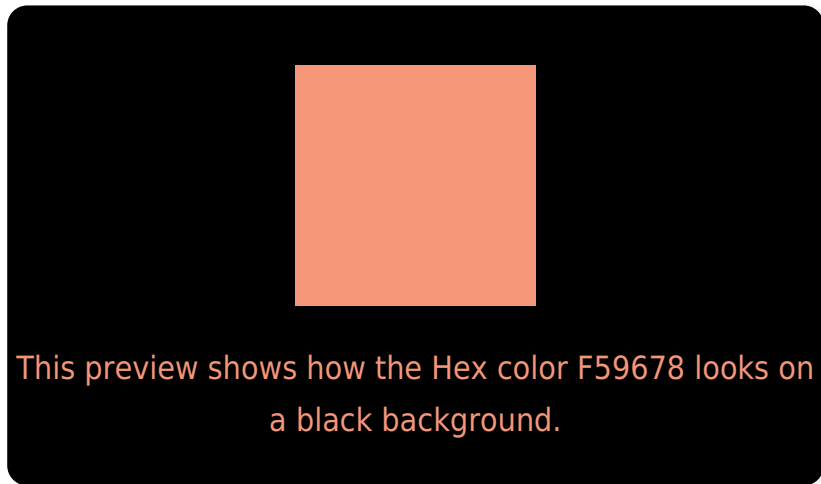
Large Text (above 18pt) WCAG AA × Fail

Any Text WCAG AA × Fail

Large Text (above 18pt) WCAG AAA × Fail

Any Text WCAG AAA × Fail

Black Background



Color Contrast Check

Large Text (above 18pt) WCAG AA ✓ Pass

Any Text WCAG AA ✓ Pass

Large Text (above 18pt) WCAG AAA ✓ Pass

Any Text WCAG AAA ✓ Pass

If you want to check with other color combinations, try the [Color Contrast Checker](#).

Hex F59678 Background



This preview shows how black text looks on a background with the Hex color F59678.

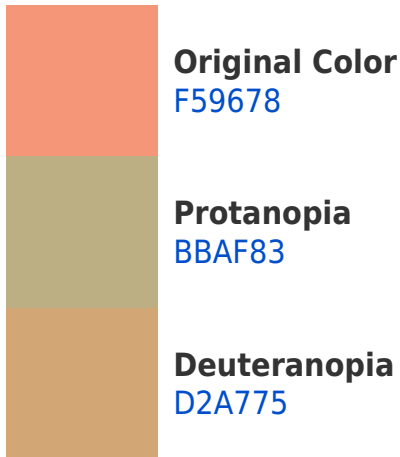


This preview shows how white text looks on a background with the Hex color F59678.

Color Blindness Simulation

Color vision deficiency is a very complex topic, and I could not describe the different causes any better than Wikipedia does, so if you want to learn more, you should check out their [article about color blindness](#).

Dichromacy



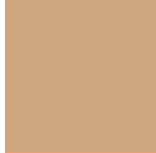


Tritanopia
F8919C

Trichromacy



Original Color
F59678



Protanomaly
D0A67F



Deuteranomaly
DFA176

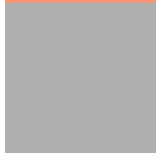


Tritanomaly
F7938F

Monochromacy



Original Color
F59678



Achromatopsia
AFAFAF



Achromatomaly
C8A69B

CSS Examples

Text

The CSS property to change the color of the text to Hex F59678 is called "color". The color property can be set on classes, ids or directly on the HTML element.

This example shows how text in the color #F59678 looks like.

```
.text, #text, p{  
    color:#F59678  
}
```

If you want to add a text shadow in that color use the text-shadow property, you can generate a text shadow directly with our [CSS Text Shadow Generator](#).

Here you see how black text with a 4 pixel #F59678 colored shadow looks like.

```
.shadow{ text-shadow: 4px 4px 2px #F59678
}
```

Border

The CSS property to change the border of an element to Hex F59678 is called "border". The border property can be set on classes, ids or directly on the HTML element.

This example shows the color as border, it can be applied via the CSS property "border" or "border-color".

```
.border, #border, table{ border:4px solid
#F59678 }
```

If only the border color should be changed use the property `border-color`.

```
.border{ border-color:#F59678 }
```

If you want to add a box shadow in that color use:

Here you see how a box with a 4 pixel #F59678 colored shadow looks like.

```
.boxshadow{ -moz-box-shadow:4px 4px 4px  
4px #F59678; -webkit-box-shadow:4px 4px  
4px 4px #F59678; box-shadow:4px 4px 4px  
4px #F59678 }
```

Background

The CSS property to change the background color of an element to Hex F59678 is called "background". The background property can be set on classes, ids or directly on the HTML element.

```
.background, #background, body{  
background:#F59678 }
```

If only the background color should be changed can be used:

```
.background{ background-color:#F59678 }
```

This example shows the color as background, it is applied via the CSS property "background".

To optimize and compress your CSS code, you can use our [online CSS compressor and optimizer](#) based on csstidy. If you want to create a linear or radial gradient as background or border, check our [CSS Gradient Generator](#).

Hey! You found this booklet interesting? Support Converting Colors with the new Membership Option!

The pro membership hides all ads, plus gives you double the colors in the color bucket, and more awesome pro features!

[Learn more, Memberships starting at \\$2.50/m!](#)

**Follow me
on Twitter!**

@ConvertingColor