

Converting Colors

Hex(F59690)

Have a look what the booklet for
Hex(F59690) contains.

| | |
|--|----|
| Hex(F59690) | 3 |
| <i>Conversions</i> | 4 |
| <i>Details</i> | 6 |
| <i>Harmonies</i> | 11 |
| <i>Previews</i> | 23 |
| <i>Color Blindness Simulation</i> | 26 |
| <i>CSS Examples</i> | 29 |

Color

Hex(F59690)

Conversions

Conversions Part 1

| Format | Color |
|-------------|----------------------------|
| Hex | F59690 |
| RGB | 245, 150, 144 |
| RGB Percent | 96%, 59%, 56% |
| CMY | 0.0392, 0.4118, 0.4353 |
| CMYK | 0.00, 0.39, 0.41, 0.04 |
| HSL | 4°, 83%, 76% |
| HSV | 4°, 41%, 96% |
| XYZ | 53.5966, 43.2388, 31.9066 |
| YIQ | 177.7210, 58.5460, 18.2740 |

Conversions

Conversions Part 2

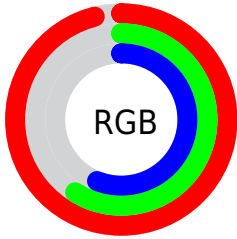
| Format | Color |
|-------------------------------------|--------------------------------|
| R _Y B | 245, 150, 144 |
| Decimal | 16094864 |
| CIE Lab | 71.72, 34.99, 18.39 |
| CIE LCh | 72, 39.532, 27.728 |
| Yxy | 43.2388, 0.4163, 0.3359 |
| Android (android.graphics.Color) | 4294284944 (0xFF59690) |
| YUV | 177.7210, -16.6245, 59.0037 |
| Hunter-Lab | 65.7562, 30.4184, 17.2603 |

Details

The Hex color **F59690** is a light color, and the websafe version is hex **FF9999**. A complement of this color would be **90EFF5**, and the grayscale version is **B2B2B2**.

A 20% lighter version of the original color is **FFCDC6**, and **BA625E** is the 20% darker color. If you saturate the color by 10%, you get **F57F78**, and if you desaturate by 10%, it is **F5ADA9**.

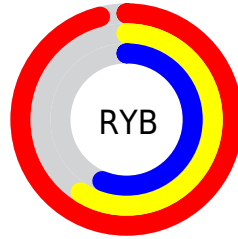
Distribution



Red (96%)

Green (59%)

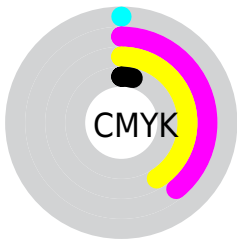
Blue (56%)



Red (96%)

Yellow (59%)

Blue (56%)

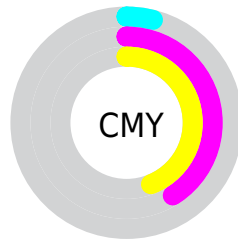


Cyan (0%)

Magenta (39%)

Yellow (41%)

Black (4%)



Cyan (4%)

Magenta (41%)

Yellow (44%)

Brightness & Saturation Gradients

These gradients show how the Hex color F59690 changes by changing the brightness by 10 percent. The first figure shows a shift by +10% for each color and the second figure -10%.

Similar to the brightness gradients but the following saturation gradients show a change of the Hex color F59690 by changing the saturation by 10% instead.

 F59690

 F59690

FFFFFF

 D77B76

 FFCDC6

 BA625E

 FFEAE2

 9D4946

FFFFFFE

 813030

 65161B

 4A0000

 310001

 000000

 F59690

 F59690

 F57F78

 F5ADA9

 F5685F

 F5C4C1

 F55146

 F5DBDA

 F53A2E

 F5F2F2

 F52315

 F5FFFF

 F50F00

Harmonies

Analogous

The Analogous color harmony consists of three colors that are next to each other on the color wheel.



F294B4



F59690



E6A074

Triad

The Triadic color harmony groups three colors that are evenly spaced from another and form a triangle on the color wheel.



F59690



7ABF88



76B4F7

Complementary

The Complementary color scheme is a pair of colors which are on the opposite of each other on the color wheel.



F59690



90EFF5

Split Complementary

Split-complementary colors differ from the complementary color scheme. The scheme consists of three colors, the original color and two neighbors of the complement color.



2FBDEC



F59690



48C3AC

Square

The Square scheme is like the rectangle color scheme, but the four colors are evenly spaced on the color wheel.



F59690



A5B86F



00C2D0



B0A7F0

Rectangle

The Rectangle color scheme consists of four colors that form a rectangle on the color wheel.



F59690



D4A869



00C2D0



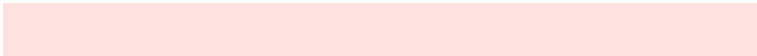
60B8F6

Sweetspot

The Sweet Spot groups the original color and five complimentary colors.



F59690



FFE2E0



F590F0



806F6E



000000



808080

Same Dimension

The Same Dimension uses a secret algorithm to generate beautiful new colors.



F59690



FF8982



F5C890



7A6F6E



BA0B00



3B0300

Inverse Universe

The Inverse Universe completely reimagines the original color for something new.



90EFF5



82F8FF



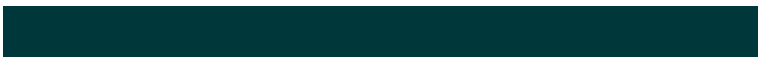
90BDF5



6E7A7A



00AFBA



00373B

Previews

White Background



This preview shows how the Hex color F59690 looks on a white background.

Color Contrast Check

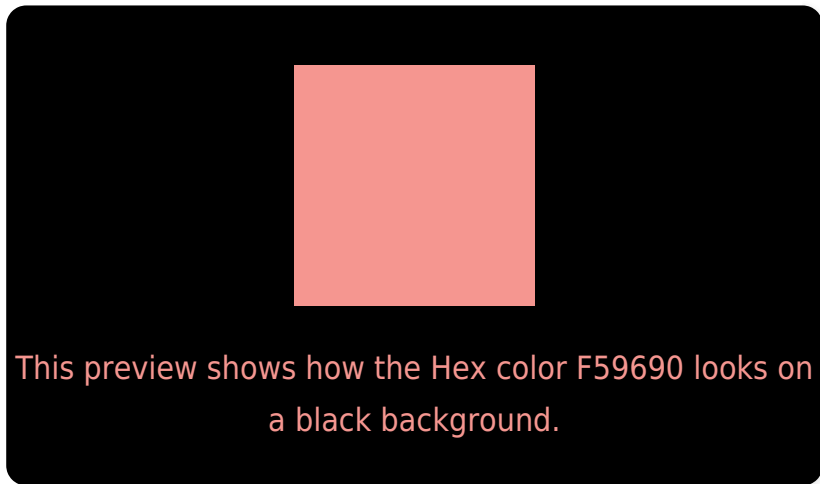
Large Text (above 18pt) WCAG AA × Fail

Any Text WCAG AA × Fail

Large Text (above 18pt) WCAG AAA × Fail

Any Text WCAG AAA × Fail

Black Background



Color Contrast Check

Large Text (above 18pt) WCAG AA ✓ Pass

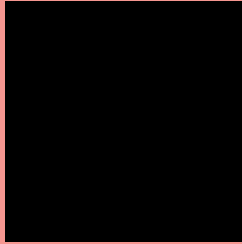
Any Text WCAG AA ✓ Pass

Large Text (above 18pt) WCAG AAA ✓ Pass

Any Text WCAG AAA ✓ Pass

If you want to check with other color combinations, try the [Color Contrast Checker](#).

Hex F59690 Background



This preview shows how black text looks on a background with the Hex color F59690.

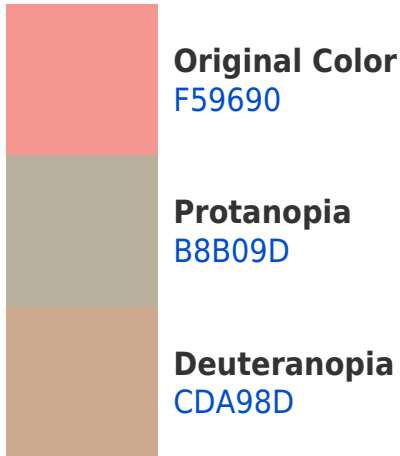


This preview shows how white text looks on a background with the Hex color F59690.

Color Blindness Simulation

Color vision deficiency is a very complex topic, and I could not describe the different causes any better than Wikipedia does, so if you want to learn more, you should check out their [article about color blindness](#).

Dichromacy



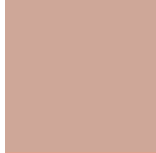


Tritanopia
F6949F

Trichromacy



Original Color
F59690



Protanomaly
CEA798



Deuteranomaly
DCA28E



Tritanomaly
F6959A

Monochromacy



Original Color
F59690



Achromatopsia
B2B2B2



Achromatomaly
CAA8A6

CSS Examples

Text

The CSS property to change the color of the text to Hex F59690 is called "color". The color property can be set on classes, ids or directly on the HTML element.

This example shows how text in the color #F59690 looks like.

```
.text, #text, p{  
    color:#F59690  
}
```

If you want to add a text shadow in that color use the text-shadow property, you can generate a text shadow directly with our [CSS Text Shadow Generator](#).

Here you see how black text with a 4 pixel #F59690 colored shadow looks like.

```
.shadow{ text-shadow: 4px 4px 2px #F59690
}
```

Border

The CSS property to change the border of an element to Hex F59690 is called "border". The border property can be set on classes, ids or directly on the HTML element.

This example shows the color as border, it can be applied via the CSS property "border" or "border-color".

```
.border, #border, table{ border:4px solid
#F59690 }
```

If only the border color should be changed use the property `border-color`.

```
.border{ border-color:#F59690 }
```

If you want to add a box shadow in that color use:

Here you see how a box with a 4 pixel #F59690 colored shadow looks like.

```
.boxshadow{ -moz-box-shadow:4px 4px 4px  
4px #F59690; -webkit-box-shadow:4px 4px  
4px 4px #F59690; box-shadow:4px 4px 4px  
4px #F59690 }
```

Background

The CSS property to change the background color of an element to Hex F59690 is called "background". The background property can be set on classes, ids or directly on the HTML element.

```
.background, #background, body{  
background:#F59690 }
```

If only the background color should be changed can be used:

```
.background{ background-color:#F59690 }
```

This example shows the color as background, it is applied via the CSS property "background".

To optimize and compress your CSS code, you can use our [online CSS compressor and optimizer](#) based on csstidy. If you want to create a linear or radial gradient as background or border, check our [CSS Gradient Generator](#).

Hey! You found this booklet interesting? Support Converting Colors with the new Membership Option!

The pro membership hides all ads, plus gives you double the colors in the color bucket, and more awesome pro features!

[Learn more, Memberships starting at \\$2.50/m!](#)

**Follow me
on Twitter!**

@ConvertingColor