

Converting Colors

Hex(F5BBAA)

Have a look what the booklet for
Hex(F5BBAA) contains.

Hex(F5BBAA)	3
<i>Conversions</i>	4
<i>Details</i>	6
<i>Harmonies</i>	11
<i>Previews</i>	23
<i>Color Blindness Simulation</i>	26
<i>CSS Examples</i>	29

Color

Hex(F5BBAA)

Conversions

Conversions Part 1

Format	Color
Hex	F5BBAA
RGB	245, 187, 170
RGB Percent	96%, 73%, 67%
CMY	0.0392, 0.2667, 0.3333
CMYK	0.00, 0.24, 0.31, 0.04
HSL	14°, 79%, 81%
HSV	14°, 31%, 96%
XYZ	62.6822, 57.8554, 45.8937
YIQ	202.4040, 40.0250, 7.0090

Conversions

Conversions Part 2

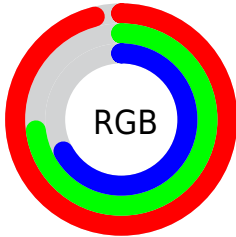
Format	Color
R _Y B	245, 192, 170
Decimal	16104362
CIE Lab	80.66, 18.59, 16.70
CIE LCh	81, 24.985, 41.936
Yxy	57.8554, 0.3766, 0.3476
Android (android.graphics.Color)	4294294442 (0xFFF5BBAA)
YUV	202.4040, -15.9752, 37.3567
Hunter-Lab	76.0627, 13.9895, 17.4703

Details

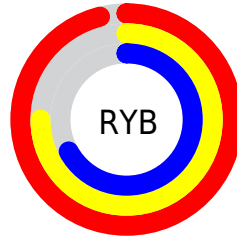
The Hex color **F5BBAA** is a light color, and the websafe version is hex **FFCCCC**. A complement of this color would be **AAE4F5**, and the grayscale version is **CBCBCB**.

A 20% lighter version of the original color is **FFF3E1**, and **BB8676** is the 20% darker color. If you saturate the color by 10%, you get **F5A892**, and if you desaturate by 10%, it is **F5CEC3**.

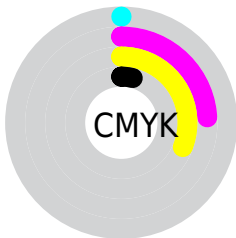
Distribution



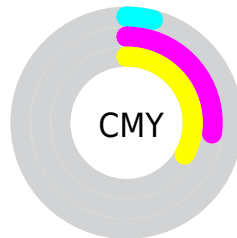
- Red (96%)
- Green (73%)
- Blue (67%)



- Red (96%)
- Yellow (75%)
- Blue (67%)



- Cyan (0%)
- Magenta (24%)
- Yellow (31%)
- Black (4%)



- Cyan (4%)
- Magenta (27%)
- Yellow (33%)

Brightness & Saturation Gradients

These gradients show how the Hex color F5BBAA changes by changing the brightness by 10 percent. The first figure shows a shift by +10% for each color and the second figure -10%.

Similar to the brightness gradients but the following saturation gradients show a change of the Hex color F5BBAA by changing the saturation by 10% instead.

 F5BBAA

 F5BBAA

FFFFFF

 D8A08F

 FFF3E1

 BB8676

FFFFFFE

 A06C5D

 845445

 6A3C2F

 50261A

 381000

 220000

 000000

 F5BBAA

 F5BBAA

 F5A892

 F5CEC3

 F59579

 F5E1DB

 F58261

 F5F4F3

 F56F48

 F5FFFF

 F55C30

 F54917

 F53800

Harmonies

Analogous

The Analogous color harmony consists of three colors that are next to each other on the color wheel.



F8B8C0



F5BBAA



E7C29C

Triad

The Triadic color harmony groups three colors that are evenly spaced from another and form a triangle on the color wheel.



F5BBAA



9CD4B9



B9C7F6

Complementary

The Complementary color scheme is a pair of colors which are on the opposite of each other on the color wheel.



F5BBAA



AAE4F5

Split Complementary

Split-complementary colors differ from the complementary color scheme. The scheme consists of three colors, the original color and two neighbors of the complement color.



9BCFF4



F5BBAA



8AD6D1

Square

The Square scheme is like the rectangle color scheme, but the four colors are evenly spaced on the color wheel.



F5BBAA



B6D0A5



88D4E7



D8BFEB

Rectangle

The Rectangle color scheme consists of four colors that form a rectangle on the color wheel.



F5BBAA



D8C79A



88D4E7



AFCAF6

Sweetspot

The Sweet Spot groups the original color and five complimentary colors.



F5BBAA



FFEDE8



F5AAE5



807571



000000



808080

Same Dimension

The Same Dimension uses a secret algorithm to generate beautiful new colors.



F5BBAA



FFB6A1



F5E0AA



7A716E



BA2A00



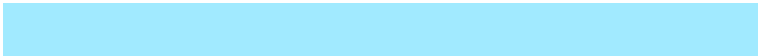
3B0D00

Inverse Universe

The Inverse Universe completely reimagines the original color for something new.



AAE4F5



A1EAF5



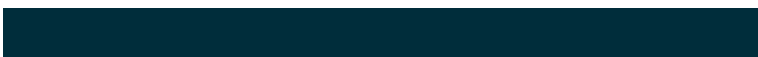
AABFF5



6E787A



0090BA



002D3B

Previews

White Background



This preview shows how the Hex color F5BBAA looks on a white background.

Color Contrast Check

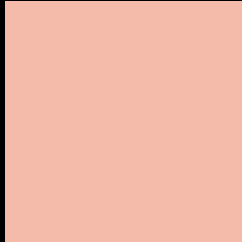
Large Text (above 18pt) WCAG AA × Fail

Any Text WCAG AA × Fail

Large Text (above 18pt) WCAG AAA × Fail

Any Text WCAG AAA × Fail

Black Background



This preview shows how the Hex color F5BBAA looks on a black background.

Color Contrast Check

Large Text (above 18pt) WCAG AA ✓ Pass

Any Text WCAG AA ✓ Pass

Large Text (above 18pt) WCAG AAA ✓ Pass

Any Text WCAG AAA ✓ Pass

If you want to check with other color combinations, try the [Color Contrast Checker](#).

Hex F5BBAA Background



This preview shows how black text looks on a background with the Hex color F5BBAA.

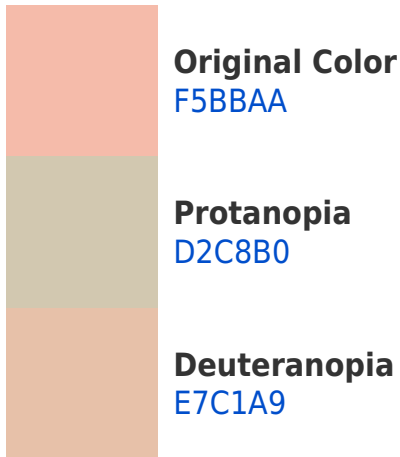


This preview shows how white text looks on a background with the Hex color F5BBAA.

Color Blindness Simulation

Color vision deficiency is a very complex topic, and I could not describe the different causes any better than Wikipedia does, so if you want to learn more, you should check out their [article about color blindness](#).

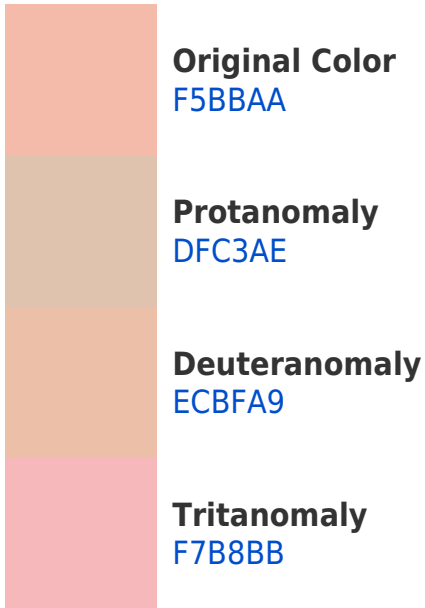
Dichromacy



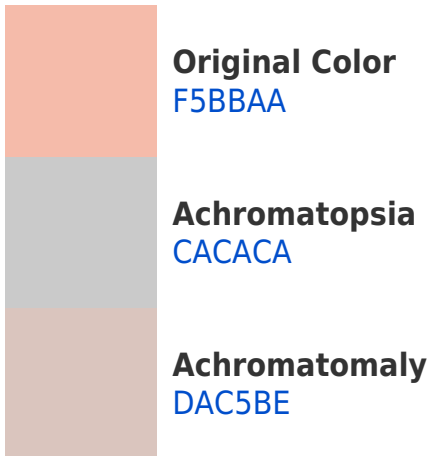


Tritanopia
F8B7C5

Trichromacy



Monochromacy



CSS Examples

Text

The CSS property to change the color of the text to Hex F5BBAA is called "color". The color property can be set on classes, ids or directly on the HTML element.

This example shows how text in the color #F5BBAA looks like.

```
.text, #text, p{  
    color:#F5BBAA  
}
```

If you want to add a text shadow in that color use the text-shadow property, you can generate a text shadow directly with our [CSS Text Shadow Generator](#).

Here you see how black text with a 4 pixel #F5BBAA colored shadow looks like.

```
.shadow{ text-shadow: 4px 4px 2px #F5BBAA
}
```

Border

The CSS property to change the border of an element to Hex F5BBAA is called "border". The border property can be set on classes, ids or directly on the HTML element.

This example shows the color as border, it can be applied via the CSS property "border" or "border-color".

```
.border, #border, table{ border:4px solid
#F5BBAA }
```

If only the border color should be changed use the property `border-color`.

```
.border{ border-color:#F5BBAA }
```

If you want to add a box shadow in that color use:

Here you see how a box with a 4 pixel #F5BBAA colored shadow looks like.

```
.boxshadow{ -moz-box-shadow:4px 4px 4px  
4px #F5BBAA; -webkit-box-shadow:4px 4px  
4px 4px #F5BBAA; box-shadow:4px 4px 4px  
4px #F5BBAA }
```

Background

The CSS property to change the background color of an element to Hex F5BBAA is called "background". The background property can be set on classes, ids or directly on the HTML element.

```
.background, #background, body{  
background:#F5BBAA }
```

If only the background color should be changed can be used:

```
.background{ background-color:#F5BBAA }
```

This example shows the color as background, it is applied via the CSS property "background".

To optimize and compress your CSS code, you can use our [online CSS compressor and optimizer](#) based on csstidy. If you want to create a linear or radial gradient as background or border, check our [CSS Gradient Generator](#).

Hey! You found this booklet interesting? Support Converting Colors with the new Membership Option!

The pro membership hides all ads, plus gives you double the colors in the color bucket, and more awesome pro features!

[Learn more, Memberships starting at \\$2.50/m!](#)

**Follow me
on Twitter!**

@ConvertingColor