

Converting Colors

Hex(F5BCB8)

Have a look what the booklet for
Hex(F5BCB8) contains.

Hex(F5BCB8)	3
<i>Conversions</i>	4
<i>Details</i>	6
<i>Harmonies</i>	11
<i>Previews</i>	23
<i>Color Blindness Simulation</i>	26
<i>CSS Examples</i>	29

Color

Hex(F5BCB8)

Conversions

Conversions Part 1

Format	Color
Hex	F5BCB8
RGB	245, 188, 184
RGB Percent	96%, 74%, 72%
CMY	0.0392, 0.2627, 0.2784
CMYK	0.00, 0.23, 0.25, 0.04
HSL	4°, 75%, 84%
HSV	4°, 25%, 96%
XYZ	64.2911, 58.8396, 53.3161
YIQ	204.5870, 35.2560, 10.8400

Conversions

Conversions Part 2

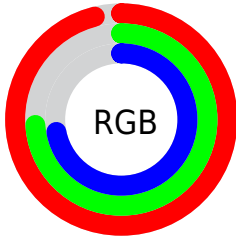
Format	Color
R _Y B	245, 188, 184
Decimal	16104632
CIE Lab	81.20, 19.93, 9.95
CIE LCh	81, 22.276, 26.540
Yxy	58.8396, 0.3644, 0.3335
Android (android.graphics.Color)	4294294712 (0xFFF5BCB8)
YUV	204.5870, -10.1494, 35.4422
Hunter-Lab	76.7070, 15.3707, 12.4847

Details

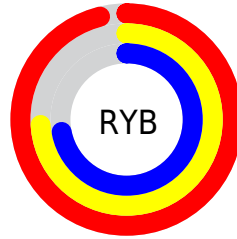
The Hex color **F5BCB8** is a light color, and the websafe version is hex **FFCCCC**. A complement of this color would be **B8F1F5**, and the grayscale version is **CDCDCD**.

A 20% lighter version of the original color is **FFF4F0**, and **BC8683** is the 20% darker color. If you saturate the color by 10%, you get **F5A5A0**, and if you desaturate by 10%, it is **F5D3D1**.

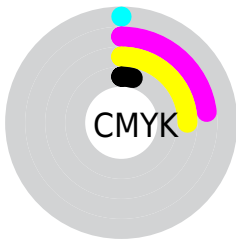
Distribution



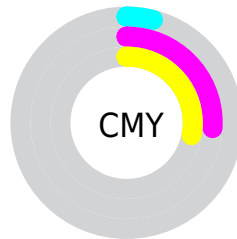
- Red (96%)
- Green (74%)
- Blue (72%)



- Red (96%)
- Yellow (74%)
- Blue (72%)



- Cyan (0%)
- Magenta (23%)
- Yellow (25%)
- Black (4%)



- Cyan (4%)
- Magenta (26%)
- Yellow (28%)

Brightness & Saturation Gradients

These gradients show how the Hex color F5BCB8 changes by changing the brightness by 10 percent. The first figure shows a shift by +10% for each color and the second figure -10%.

Similar to the brightness gradients but the following saturation gradients show a change of the Hex color F5BCB8 by changing the saturation by 10% instead.

 F5BCB8

 F5BCB8

FFFFFF

 D8A19D

 FFF4F0

 BC8683

 A06D6A

 855452

 6B3D3B

 512625

 391110

 240000

 000000

 F5BCB8

 F5BCB8

 F5A5A0

 F5D3D1

 F58E87

 F5EAE9

 F5776E

 F5FFFF

 F56056

 F54A3D

 F53325

 F51C0C

 F51000

Harmonies

Analogous

The Analogous color harmony consists of three colors that are next to each other on the color wheel.



F2BBCD



F5BCB8



EDC1A8

Triad

The Triadic color harmony groups three colors that are evenly spaced from another and form a triangle on the color wheel.



F5BCB8



AED3B2



AFCCF3

Complementary

The Complementary color scheme is a pair of colors which are on the opposite of each other on the color wheel.



F5BCB8



B8F1F5

Split Complementary

Split-complementary colors differ from the complementary color scheme. The scheme consists of three colors, the original color and two neighbors of the complement color.



98D2EC



F5BCB8



9AD6C6

Square

The Square scheme is like the rectangle color scheme, but the four colors are evenly spaced on the color wheel.



F5BCB8



C6CEA4



91D5DB



CAC5EF

Rectangle

The Rectangle color scheme consists of four colors that form a rectangle on the color wheel.



F5BCB8



E3C5A2



91D5DB



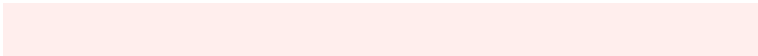
A6CEF2

Sweetspot

The Sweet Spot groups the original color and five complimentary colors.



F5BCB8



FFEEED



F5B8F2



807675



000000



808080

Same Dimension

The Same Dimension uses a secret algorithm to generate beautiful new colors.



F5BCB8



FFB8B3



F5DAB8



7A6F6E



BA0C00



3B0400

Inverse Universe

The Inverse Universe completely reimagines the original color for something new.



B8F1F5



B3FAFF



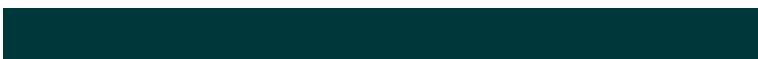
B8D3F5



6E7A7A



00AEBA



00373B

Previews

White Background



This preview shows how the Hex color F5BCB8 looks on a white background.

Color Contrast Check

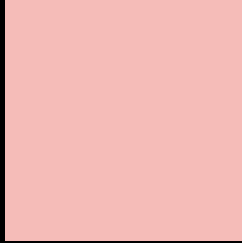
Large Text (above 18pt) WCAG AA × Fail

Any Text WCAG AA × Fail

Large Text (above 18pt) WCAG AAA × Fail

Any Text WCAG AAA × Fail

Black Background



This preview shows how the Hex color F5BCB8 looks on a black background.

Color Contrast Check

Large Text (above 18pt) WCAG AA ✓ Pass

Any Text WCAG AA ✓ Pass

Large Text (above 18pt) WCAG AAA ✓ Pass

Any Text WCAG AAA ✓ Pass

If you want to check with other color combinations, try the [Color Contrast Checker](#).

Hex F5BCB8 Background



This preview shows how black text looks on a background with the Hex color F5BCB8.

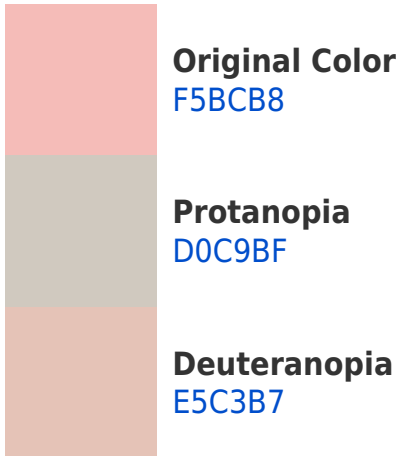



This preview shows how white text looks on a background with the Hex color F5BCB8.

Color Blindness Simulation

Color vision deficiency is a very complex topic, and I could not describe the different causes any better than Wikipedia does, so if you want to learn more, you should check out their [article about color blindness](#).

Dichromacy



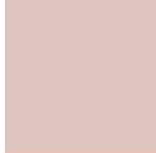


Tritanopia
F7BAC8

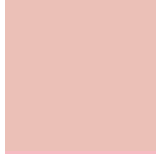
Trichromacy



Original Color
F5BCB8



Protanomaly
DDC4BC



Deuteranomaly
EBC0B7

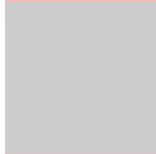


Tritanomaly
F6BBC2

Monochromacy



Original Color
F5BCB8



Achromatopsia
CDCDCD



Achromatomaly
DCC7C5

CSS Examples

Text

The CSS property to change the color of the text to Hex F5BCB8 is called "color". The color property can be set on classes, ids or directly on the HTML element.

This example shows how text in the color #F5BCB8 looks like.

```
.text, #text, p{  
    color:#F5BCB8  
}
```

If you want to add a text shadow in that color use the text-shadow property, you can generate a text shadow directly with our [CSS Text Shadow Generator](#).

Here you see how black text with a 4 pixel #F5BCB8 colored shadow looks like.

```
.shadow{ text-shadow: 4px 4px 2px #F5BCB8
}
```

Border

The CSS property to change the border of an element to Hex F5BCB8 is called "border". The border property can be set on classes, ids or directly on the HTML element.

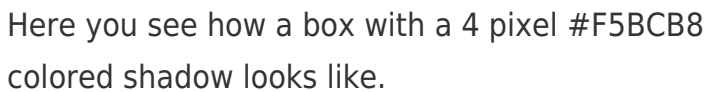
This example shows the color as border, it can be applied via the CSS property "border" or "border-color".

```
.border, #border, table{ border:4px solid
#F5BCB8 }
```

If only the border color should be changed use the property `border-color`.

```
.border{ border-color:#F5BCB8 }
```

If you want to add a box shadow in that color use:



Here you see how a box with a 4 pixel #F5BCB8 colored shadow looks like.

```
.boxshadow{ -moz-box-shadow:4px 4px 4px  
4px #F5BCB8; -webkit-box-shadow:4px 4px  
4px 4px #F5BCB8; box-shadow:4px 4px 4px  
4px #F5BCB8 }
```

Background

The CSS property to change the background color of an element to Hex F5BCB8 is called "background". The background property can be set on classes, ids or directly on the HTML element.

```
.background, #background, body{  
background:#F5BCB8 }
```

If only the background color should be changed can be used:

```
.background{ background-color:#F5BCB8 }
```

This example shows the color as background, it is applied via the CSS property "background".

To optimize and compress your CSS code, you can use our [online CSS compressor and optimizer](#) based on csstidy. If you want to create a linear or radial gradient as background or border, check our [CSS Gradient Generator](#).

Hey! You found this booklet interesting? Support Converting Colors with the new Membership Option!

The pro membership hides all ads, plus gives you double the colors in the color bucket, and more awesome pro features!

[Learn more, Memberships starting at \\$2.50/m!](#)

**Follow me
on Twitter!**

@ConvertingColor