

# Converting Colors

Hex(F5C1C7)

Have a look what the booklet for  
Hex(F5C1C7) contains.

<b>Hex(F5C1C7)</b> .....	3
<b><i>Conversions</i></b> .....	4
<b><i>Details</i></b> .....	6
<b><i>Harmonies</i></b> .....	11
<b><i>Previews</i></b> .....	23
<b><i>Color Blindness Simulation</i></b> .....	26
<b><i>CSS Examples</i></b> .....	29

# **Color**

**Hex(F5C1C7)**

# Conversions

## Conversions Part 1

Format	Color
Hex	F5C1C7
RGB	245, 193, 199
RGB Percent	96%, 76%, 78%
CMY	0.0392, 0.2431, 0.2196
CMYK	0.00, 0.21, 0.19, 0.04
HSL	353°, 72%, 86%
HSV	353°, 21%, 96%
XYZ	67.0350, 61.6759, 62.4044
YIQ	209.2320, 29.0660, 12.8900

# Conversions

## Conversions Part 2

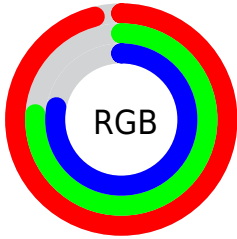
<b>Format</b>	<b>Color</b>
R <sub>Y</sub> B	245, 193, 199
Decimal	16105927
CIE Lab	82.74, 19.46, 4.11
CIE LCh	83, 19.889, 11.934
Yxy	61.6759, 0.3508, 0.3227
Android (android.graphics.Color)	4294296007 (0xFFFF5C1C7)
YUV	209.2320, -5.0444, 31.3685
Hunter-Lab	78.5340, 14.9292, 7.8611

# Details

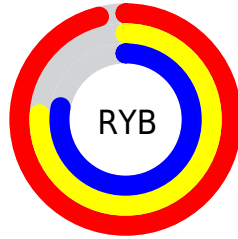
The Hex color **F5C1C7** is a light color, and the websafe version is hex **FFCCCC**. A complement of this color would be **C1F5EF**, and the grayscale version is **D1D1D1**.

A 20% lighter version of the original color is **FFFAFF**, and **BC8B91** is the 20% darker color. If you saturate the color by 10%, you get **F5A9B1**, and if you desaturate by 10%, it is **F5DADD**.

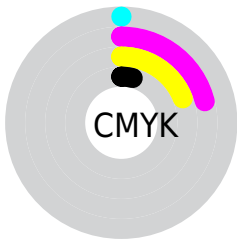
# Distribution



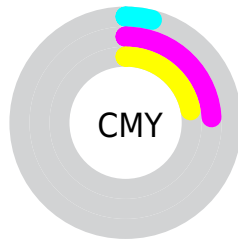
- Red (96%)
- Green (76%)
- Blue (78%)



- Red (96%)
- Yellow (76%)
- Blue (78%)



- Cyan (0%)
- Magenta (21%)
- Yellow (19%)
- Black (4%)



- Cyan (4%)
- Magenta (24%)
- Yellow (22%)

# Brightness & Saturation Gradients

These gradients show how the Hex color F5C1C7 changes by changing the brightness by 10 percent. The first figure shows a shift by +10% for each color and the second figure -10%.

Similar to the brightness gradients but the following saturation gradients show a change of the Hex color F5C1C7 by changing the saturation by 10% instead.



 F5C1C7

FFFFFF

 FFFAFF

 F5C1C7

 D8A6AC

 BC8B91

 A17278

 86595F

 6C4147

 532A31

 3A151C

 270001

 000000

 F5C1C7

 F5C1C7

 F5A9B1

 F5DADD

 F5909C

 F5F2F2

 F57886

 F5FFFF

 F55F70

 F5465B

 F52E45

 F5152F

 F5001C

# Harmonies

## Analogous

The Analogous color harmony consists of three colors that are next to each other on the color wheel.



EDC2DA



F5C1C7



F3C4B6

# Triad

The Triadic color harmony groups three colors that are evenly spaced from another and form a triangle on the color wheel.



F5C1C7



C0D4B2



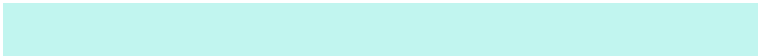
ACD3F1

# Complementary

The Complementary color scheme is a pair of colors which are on the opposite of each other on the color wheel.



F5C1C7



C1F5EF

# Split Complementary

Split-complementary colors differ from the complementary color scheme. The scheme consists of three colors, the original color and two neighbors of the complement color.



9ED7E6



F5C1C7



ABD8C2

# Square

The Square scheme is like the rectangle color scheme, but the four colors are evenly spaced on the color wheel.



F5C1C7



D5CFA9



9ED9D5



C3CDF2

# Rectangle

The Rectangle color scheme consists of four colors that form a rectangle on the color wheel.



F5C1C7



ECC7AE



9ED9D5



A6D5EE



# Sweetspot

The Sweet Spot groups the original color and five complimentary colors.



F5C1C7



FFF0F1



EFC1F5



807778



000000



808080



# Same Dimension

The Same Dimension uses a secret algorithm to generate beautiful new colors.



F5C1C7



FFBFC7



F5D5C1



7A6E70



BA0015



3B0007



# Inverse Universe

The Inverse Universe completely reimagines the original color for something new.



F5C1C7



FFBFC7



C1E1F5



7A6E70



BA0015



3B0007



# Previews

## White Background



This preview shows how the Hex color F5C1C7 looks on a white background.

## Color Contrast Check

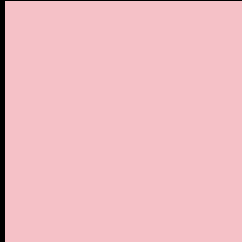
Large Text (above 18pt) WCAG AA × Fail

Any Text WCAG AA × Fail

Large Text (above 18pt) WCAG AAA × Fail

Any Text WCAG AAA × Fail

# Black Background



This preview shows how the Hex color F5C1C7 looks on a black background.

## Color Contrast Check

Large Text (above 18pt) WCAG AA ✓ Pass

Any Text WCAG AA ✓ Pass

Large Text (above 18pt) WCAG AAA ✓ Pass

Any Text WCAG AAA ✓ Pass

If you want to check with other color combinations, try the [Color Contrast Checker](#).



## Hex F5C1C7 Background



This preview shows how black text looks on a background with the Hex color F5C1C7.



This preview shows how white text looks on a background with the Hex color F5C1C7.

# Color Blindness Simulation

Color vision deficiency is a very complex topic, and I could not describe the different causes any better than Wikipedia does, so if you want to learn more, you should check out their [article about color blindness](#).

## Dichromacy



**Original Color**  
F5C1C7

**Protanopia**  
D2CDCE

**Deuteranopia**  
E5C7C6

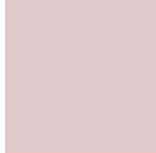


**Tritanopia**  
F6C0CF

# Trichromacy



**Original Color**  
F5C1C7



**Protanomaly**  
DFC9CB



**Deuteranomaly**  
EBC5C6

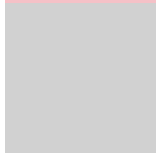


**Tritanomaly**  
F6C0CC

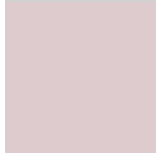
# Monochromacy



**Original Color**  
F5C1C7



**Achromatopsia**  
D1D1D1



**Achromatomaly**  
DECBCD

# CSS Examples

## Text

The CSS property to change the color of the text to Hex F5C1C7 is called "color". The color property can be set on classes, ids or directly on the HTML element.

This example shows how text in the color #F5C1C7 looks like.

```
.text, #text, p{  
    color:#F5C1C7  
}
```

If you want to add a text shadow in that color use the text-shadow property, you can generate a text shadow directly with our [CSS Text Shadow Generator](#).

Here you see how black text with a 4 pixel #F5C1C7 colored shadow looks like.

```
.shadow{ text-shadow: 4px 4px 2px #F5C1C7
}
```

## Border

The CSS property to change the border of an element to Hex F5C1C7 is called "border". The border property can be set on classes, ids or directly on the HTML element.

This example shows the color as border, it can be applied via the CSS property "border" or "border-color".

```
.border, #border, table{ border:4px solid
#F5C1C7 }
```

If only the border color should be changed use the property `border-color`.

```
.border{ border-color:#F5C1C7 }
```

If you want to add a box shadow in that color use:

Here you see how a box with a 4 pixel #F5C1C7 colored shadow looks like.

```
.boxshadow{ -moz-box-shadow:4px 4px 4px  
4px #F5C1C7; -webkit-box-shadow:4px 4px  
4px 4px #F5C1C7; box-shadow:4px 4px 4px  
4px #F5C1C7 }
```

# Background

The CSS property to change the background color of an element to Hex F5C1C7 is called "background". The background property can be set on classes, ids or directly on the HTML element.

```
.background, #background, body{  
background:#F5C1C7 }
```

If only the background color should be changed can be used:

```
.background{ background-color:#F5C1C7 }
```

This example shows the color as background, it is applied via the CSS property "background".

To optimize and compress your CSS code, you can use our [online CSS compressor and optimizer](#) based on csstidy. If you want to create a linear or radial gradient as background or border, check our [CSS Gradient Generator](#).



Hey! You found this booklet interesting? Support Converting Colors with the new Membership Option!

The pro membership hides all ads, plus gives you double the colors in the color bucket, and more awesome pro features!

**[Learn more, Memberships starting at \\$2.50/m!](#)**

**Follow me  
on Twitter!**

@ConvertingColor