

Converting Colors

Hex(F5D0D0)

Have a look what the booklet for
Hex(F5D0D0) contains.

Hex(F5D0D0)	3
<i>Conversions</i>	4
<i>Details</i>	6
<i>Harmonies</i>	11
<i>Previews</i>	23
<i>Color Blindness Simulation</i>	26
<i>CSS Examples</i>	29

Color

Hex(F5D0D0)

Conversions

Conversions Part 1

Format	Color
Hex	F5D0D0
RGB	245, 208, 208
RGB Percent	96%, 82%, 82%
CMY	0.0392, 0.1843, 0.1843
CMYK	0.00, 0.15, 0.15, 0.04
HSL	0°, 65%, 89%
HSV	0°, 15%, 96%
XYZ	71.5972, 69.0783, 69.2344
YIQ	219.0630, 22.0520, 7.8440

Conversions

Conversions Part 2

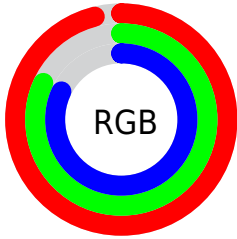
Format	Color
R _Y B	245, 208, 208
Decimal	16109776
CIE Lab	86.54, 12.95, 4.82
CIE LCh	87, 13.814, 20.402
Yxy	69.0783, 0.3411, 0.3291
Android (android.graphics.Color)	4294299856 (0xFFF5D0D0)
YUV	219.0630, -5.4541, 22.7467
Hunter-Lab	83.1134, 8.3188, 8.7901

Details

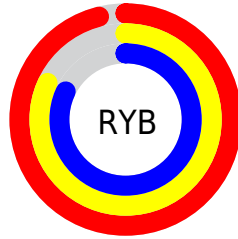
The Hex color **F5D0D0** is a light color, and the websafe version is hex **FFCCCC**. A complement of this color would be **D0F5F5**, and the grayscale version is **DBDBDB**.

A 20% lighter version of the original color is **FFFFFF**, and **BC9A9A** is the 20% darker color. If you saturate the color by 10%, you get **F5B7B7**, and if you desaturate by 10%, it is **F5E9E9**.

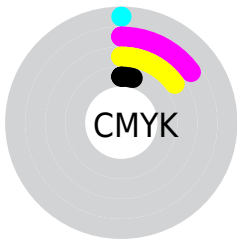
Distribution



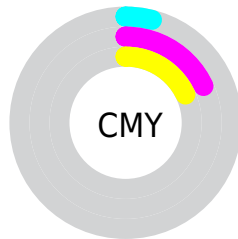
- Red (96%)
- Green (82%)
- Blue (82%)



- Red (96%)
- Yellow (82%)
- Blue (82%)



- Cyan (0%)
- Magenta (15%)
- Yellow (15%)
- Black (4%)



- Cyan (4%)
- Magenta (18%)
- Yellow (18%)

Brightness & Saturation Gradients

These gradients show how the Hex color F5D0D0 changes by changing the brightness by 10 percent. The first figure shows a shift by +10% for each color and the second figure -10%.

Similar to the brightness gradients but the following saturation gradients show a change of the Hex color F5D0D0 by changing the saturation by 10% instead.

 F5D0D0

FFFFFF

 F5D0D0

 D8B4B4

 BC9A9A

 A18080

 876667

 6D4E4F

 543738

 3C2223

 260D0D

 000000

 F5D0D0

 F5D0D0

 F5B7B7

 F5E9E9

 F59F9F

 F5FFFF

 F58686

 F56E6E

 F55656

 F53D3D

 F52424

 F50C0C

 F50000

Harmonies

Analogous

The Analogous color harmony consists of three colors that are next to each other on the color wheel.



F1D0DD



F5D0D0



F2D2C5

Triad

The Triadic color harmony groups three colors that are evenly spaced from another and form a triangle on the color wheel.



F5D0D0



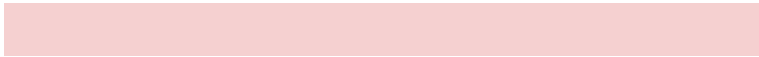
CBDEC8



C6DBF2

Complementary

The Complementary color scheme is a pair of colors which are on the opposite of each other on the color wheel.



F5D0D0



D0F5F5

Split Complementary

Split-complementary colors differ from the complementary color scheme. The scheme consists of three colors, the original color and two neighbors of the complement color.



BBDEEC



F5D0D0



BEE0D4

Square

The Square scheme is like the rectangle color scheme, but the four colors are evenly spaced on the color wheel.



F5D0D0



DADBC0



B8E0E1



D6D7F1

Rectangle

The Rectangle color scheme consists of four colors that form a rectangle on the color wheel.



F5D0D0



ECD5C0



B8E0E1



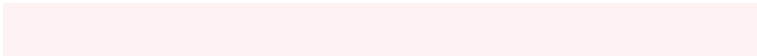
C1DCF1

Sweetspot

The Sweet Spot groups the original color and five complimentary colors.



F5D0D0



FFF2F2



F5D0F5



807878



000000



808080

Same Dimension

The Same Dimension uses a secret algorithm to generate beautiful new colors.



F5D0D0



FFD1D1



F5E3D0



7A6E6E



BA0000



3B0000

Inverse Universe

The Inverse Universe completely reimagines the original color for something new.



D0F5F5



D1FFFF



D0E3F5



6E7A7A



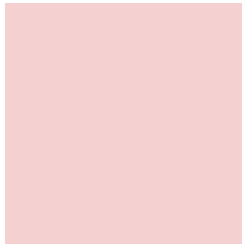
00BABA



003B3B

Previews

White Background



This preview shows how the Hex color F5D0D0 looks on a white background.

Color Contrast Check

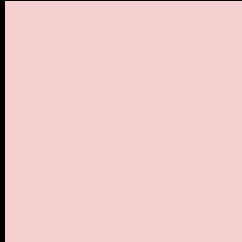
Large Text (above 18pt) WCAG AA × Fail

Any Text WCAG AA × Fail

Large Text (above 18pt) WCAG AAA × Fail

Any Text WCAG AAA × Fail

Black Background



This preview shows how the Hex color F5D0D0 looks on a black background.

Color Contrast Check

Large Text (above 18pt) WCAG AA ✓ Pass

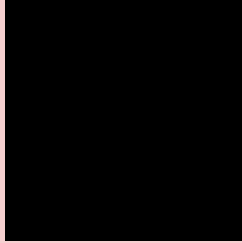
Any Text WCAG AA ✓ Pass

Large Text (above 18pt) WCAG AAA ✓ Pass

Any Text WCAG AAA ✓ Pass

If you want to check with other color combinations, try the [Color Contrast Checker](#).

Hex F5D0D0 Background



This preview shows how black text looks on a background with the Hex color F5D0D0.

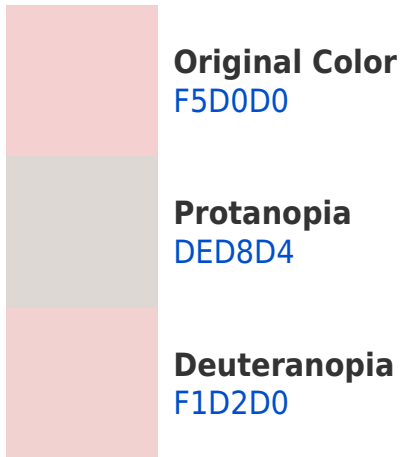


This preview shows how white text looks on a background with the Hex color F5D0D0.

Color Blindness Simulation

Color vision deficiency is a very complex topic, and I could not describe the different causes any better than Wikipedia does, so if you want to learn more, you should check out their [article about color blindness](#).

Dichromacy





Tritanopia
F7CEDE

Trichromacy



Original Color
F5D0D0

Protanomaly
E6D5D3

Deuteranomaly
F2D1D0

Tritanomaly
F6CFD9

Monochromacy



Original Color
F5D0D0

Achromatopsia
DBDBDB

Achromatomaly
E4D7D7

CSS Examples

Text

The CSS property to change the color of the text to Hex F5D0D0 is called "color". The color property can be set on classes, ids or directly on the HTML element.

This example shows how text in the color #F5D0D0 looks like.

```
.text, #text, p{  
    color:#F5D0D0  
}
```

If you want to add a text shadow in that color use the text-shadow property, you can generate a text shadow directly with our [CSS Text Shadow Generator](#).

Here you see how black text with a 4 pixel #F5D0D0 colored shadow looks like.

```
.shadow{ text-shadow: 4px 4px 2px #F5D0D0
}
```

Border

The CSS property to change the border of an element to Hex F5D0D0 is called "border". The border property can be set on classes, ids or directly on the HTML element.

This example shows the color as border, it can be applied via the CSS property "border" or "border-color".

```
.border, #border, table{ border:4px solid
#F5D0D0 }
```

If only the border color should be changed use the property `border-color`.

```
.border{ border-color:#F5D0D0 }
```

If you want to add a box shadow in that color use:

Here you see how a box with a 4 pixel #F5D0D0 colored shadow looks like.

```
.boxshadow{ -moz-box-shadow:4px 4px 4px  
4px #F5D0D0; -webkit-box-shadow:4px 4px  
4px 4px #F5D0D0; box-shadow:4px 4px 4px  
4px #F5D0D0 }
```

Background

The CSS property to change the background color of an element to Hex F5D0D0 is called "background". The background property can be set on classes, ids or directly on the HTML element.

```
.background, #background, body{  
background:#F5D0D0 }
```

If only the background color should be changed can be used:

```
.background{ background-color:#F5D0D0 }
```

This example shows the color as background, it is applied via the CSS property "background".

To optimize and compress your CSS code, you can use our [online CSS compressor and optimizer](#) based on csstidy. If you want to create a linear or radial gradient as background or border, check our [CSS Gradient Generator](#).

Hey! You found this booklet interesting? Support Converting Colors with the new Membership Option!

The pro membership hides all ads, plus gives you double the colors in the color bucket, and more awesome pro features!

[Learn more, Memberships starting at \\$2.50/m!](#)

**Follow me
on Twitter!**

@ConvertingColor