

# Converting Colors

Hex(F63065)

Have a look what the booklet for  
Hex(F63065) contains.

<b>Hex(F63065)</b> .....	3
<b><i>Conversions</i></b> .....	4
<b><i>Details</i></b> .....	6
<b><i>Harmonies</i></b> .....	11
<b><i>Previews</i></b> .....	23
<b><i>Color Blindness Simulation</i></b> .....	26
<b><i>CSS Examples</i></b> .....	29

# Color

**Hex(F63065)**

# Conversions

## Conversions Part 1

<b>Format</b>	<b>Color</b>
Hex	F63065
RGB	246, 48, 101
RGB Percent	96%, 19%, 40%
CMY	0.0353, 0.8118, 0.6039
CMYK	0.00, 0.80, 0.59, 0.04
HSL	344°, 92%, 58%
HSV	344°, 80%, 96%
XYZ	41.4120, 22.6463, 14.5004
YIQ	113.2440, 100.9950, 58.4590

# Conversions

## Conversions Part 2

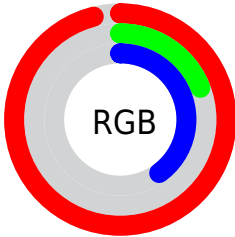
<b>Format</b>	<b>Color</b>
<b>R<sub>YB</sub></b>	246, 48, 101
Decimal	16134245
CIE <sub>Lab</sub>	54.71, 74.28, 19.77
CIE <sub>LCh</sub>	55, 76.871, 14.905
Yxy	22.6463, 0.5271, 0.2883
Android (android.graphics.Color)	4294324325 (0xFFFF63065)
YUV	113.2440, -6.0363, 116.4270
Hunter-Lab	47.5882, 72.0542, 15.2456

# Details

The Hex color **F63065** is a dark color, and the websafe version is hex **FF3366**. The color can be described as middle washed rose. A complement of this color would be **30F6C1**, and the grayscale version is **717171**.

A 20% lighter version of the original color is **FF7298**, and **B60037** is the 20% darker color. If you saturate the color by 10%, you get **F61753**, and if you desaturate by 10%, it is **F64977**.

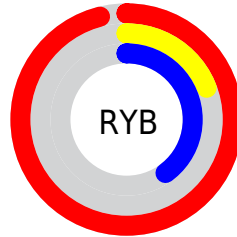
# Distribution



Red (96%)

Green (19%)

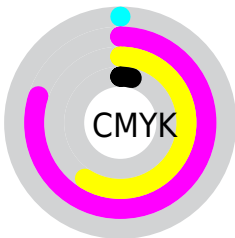
Blue (40%)



Red (96%)

Yellow (19%)

Blue (40%)

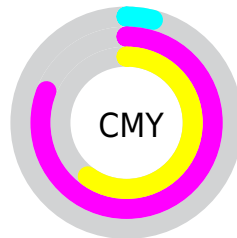


Cyan (0%)

Magenta (80%)

Yellow (59%)

Black (4%)



Cyan (4%)

Magenta (81%)

Yellow (60%)

# Brightness & Saturation Gradients

These gradients show how the Hex color F63065 changes by changing the brightness by 10 percent. The first figure shows a shift by +10% for each color and the second figure -10%.

Similar to the brightness gradients but the following saturation gradients show a change of the Hex color F63065 by changing the saturation by 10% instead.



 F63065

 F63065

FFFFFF

 D6004D

 FF7298

 B60037

 FF90B2

 970022

 FFAECE

 78000D

 FFCCEA

 590003

 FFEAFF

 3B0002

 130000

 000000

 F63065

 F63065

 F61753

 F64977

 F60042

 F66189

 F67A9B

 F692AD

 F6ABBF

 F6C4D1

 F6DCE3

 F6F5F5

 F6FFFF

# Harmonies

## Analogous

The Analogous color harmony consists of three colors that are next to each other on the color wheel.



E738A7



F63065



E45224

# Triad

The Triadic color harmony groups three colors that are evenly spaced from another and form a triangle on the color wheel.



F63065



25970F



0094FF

# Complementary

The Complementary color scheme is a pair of colors which are on the opposite of each other on the color wheel.



F63065



30F6C1

# Split Complementary

Split-complementary colors differ from the complementary color scheme. The scheme consists of three colors, the original color and two neighbors of the complement color.



009EE0



F63065



009E5E

# Square

The Square scheme is like the rectangle color scheme, but the four colors are evenly spaced on the color wheel.



F63065



808A00



00A0A3



0080FF

# Rectangle

The Rectangle color scheme consists of four colors that form a rectangle on the color wheel.



F63065



CA6A00



00A0A3



0098FC



# Sweetspot

The Sweet Spot groups the original color and five complimentary colors.



F63065



FFC2D2



BE30F6



805B64



000000



808080



# Same Dimension

The Same Dimension uses a secret algorithm to generate beautiful new colors.



F63065



FF084A



F65B30



7A6E71



BA0032



3B0010



# Inverse Universe

The Inverse Universe completely reimagines the original color for something new.



F63065



FF084A



30CBF6



7A6E71



BA0032



3B0010



# Previews

## White Background



This preview shows how the Hex color F63065 looks on a white background.

## Color Contrast Check

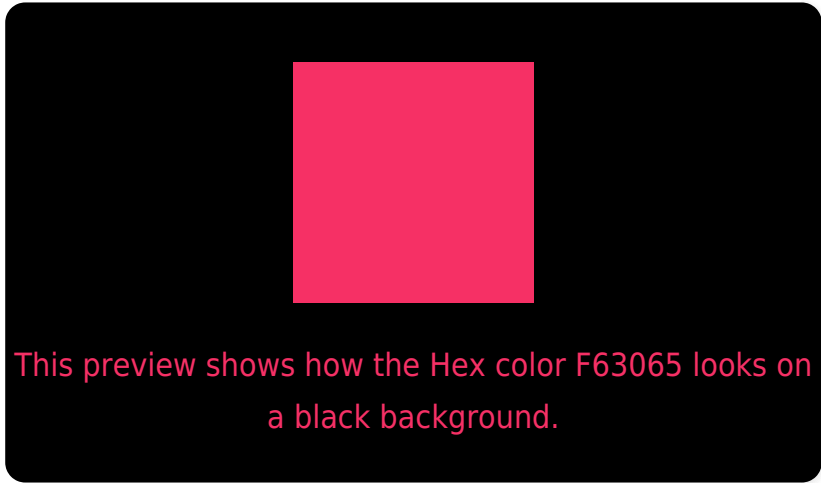
Large Text (above 18pt) WCAG AA ✓ Pass

Any Text WCAG AA × Fail

Large Text (above 18pt) WCAG AAA × Fail

Any Text WCAG AAA × Fail

# Black Background



## Color Contrast Check

Large Text (above 18pt) WCAG AA ✓ Pass

Any Text WCAG AA ✓ Pass

Large Text (above 18pt) WCAG AAA ✓ Pass

Any Text WCAG AAA × Fail

If you want to check with other color combinations, try the [Color Contrast Checker](#).



## Hex F63065 Background



This preview shows how black text looks on a background with the Hex color F63065.

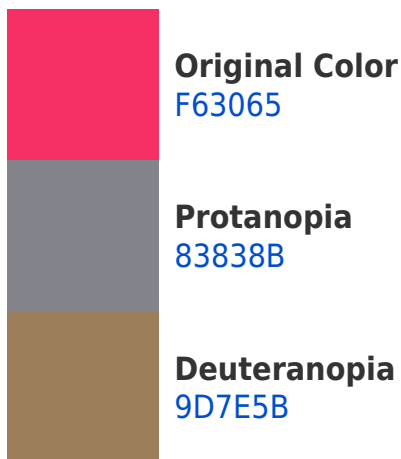


This preview shows how white text looks on a background with the Hex color F63065.

# Color Blindness Simulation

Color vision deficiency is a very complex topic, and I could not describe the different causes any better than Wikipedia does, so if you want to learn more, you should check out their [article about color blindness](#).

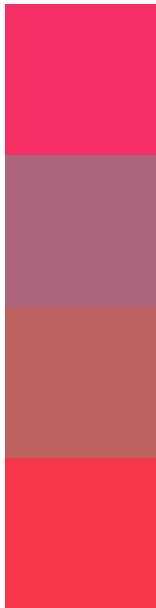
## Dichromacy





**Tritanopia**  
F43A3C

# Trichromacy



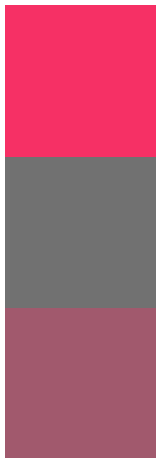
**Original Color**  
F63065

**Protanomaly**  
AD657D

**Deuteranomaly**  
BD625F

**Tritanomaly**  
F5364B

# Monochromacy



**Original Color**  
F63065

**Achromatopsia**  
717171

**Achromatomaly**  
A1596D

# CSS Examples

## Text

The CSS property to change the color of the text to Hex F63065 is called "color". The color property can be set on classes, ids or directly on the HTML element.

This example shows how text in the color #F63065 looks like.

```
.text, #text, p{  
    color:#F63065  
}
```

If you want to add a text shadow in that color use the text-shadow property, you can generate a text shadow directly with our [CSS Text Shadow Generator](#).

Here you see how black text with a 4 pixel #F63065 colored shadow looks like.

```
.shadow{ text-shadow: 4px 4px 2px #F63065
}
```

## Border

The CSS property to change the border of an element to Hex F63065 is called "border". The border property can be set on classes, ids or directly on the HTML element.

This example shows the color as border, it can be applied via the CSS property "border" or "border-color".

```
.border, #border, table{ border:4px solid
#F63065 }
```

If only the border color should be changed use the property `border-color`.

```
.border{ border-color:#F63065 }
```

If you want to add a box shadow in that color use:

Here you see how a box with a 4 pixel #F63065 colored shadow looks like.

```
.boxshadow{ -moz-box-shadow:4px 4px 4px  
4px #F63065; -webkit-box-shadow:4px 4px  
4px 4px #F63065; box-shadow:4px 4px 4px  
4px #F63065 }
```

# Background

The CSS property to change the background color of an element to Hex F63065 is called "background". The background property can be set on classes, ids or directly on the HTML element.

```
.background, #background, body{  
background:#F63065 }
```

If only the background color should be changed can be used:

```
.background{ background-color:#F63065 }
```

This example shows the color as background, it is applied via the CSS property "background".

To optimize and compress your CSS code, you can use our [online CSS compressor and optimizer](#) based on csstidy. If you want to create a linear or radial gradient as background or border, check our [CSS Gradient Generator](#).



Hey! You found this booklet interesting? Support Converting Colors with the new Membership Option!

The pro membership hides all ads, plus gives you double the colors in the color bucket, and more awesome pro features!

**[Learn more, Memberships starting at \\$2.50/m!](#)**

**Follow me  
on Twitter!**

@ConvertingColor