

Converting Colors

Hex(F64769)

Have a look what the booklet for
Hex(F64769) contains.

Hex(F64769)	3
<i>Conversions</i>	4
<i>Details</i>	6
<i>Harmonies</i>	11
<i>Previews</i>	23
<i>Color Blindness Simulation</i>	26
<i>CSS Examples</i>	29

Color

Hex(F64769)

Conversions

Conversions Part 1

Format	Color
Hex	F64769
RGB	246, 71, 105
RGB Percent	96%, 28%, 41%
CMY	0.0353, 0.7216, 0.5882
CMYK	0.00, 0.71, 0.57, 0.04
HSL	348°, 91%, 62%
HSV	348°, 71%, 96%
XYZ	42.8091, 25.1192, 15.9568
YIQ	127.2010, 93.3860, 47.6740

Conversions

Conversions Part 2

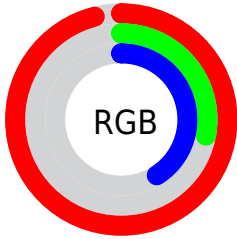
Format	Color
R_{YB}	246, 71, 105
Decimal	16140137
CIE _{Lab}	57.19, 67.79, 20.75
CIE _{LCh}	57, 70.892, 17.017
Yxy	25.1192, 0.5103, 0.2994
Android (android.graphics.Color)	4294330217 (0xFFFF64769)
YUV	127.2010, -10.9451, 104.1867
Hunter-Lab	50.1191, 64.7569, 16.2067

Details

The Hex color **F64769** is a dark color, and the websafe version is hex **FF3366**. The color can be described as middle washed rose. A complement of this color would be **47F6D4**, and the grayscale version is **7F7F7F**.

A 20% lighter version of the original color is **FF839C**, and **B7003A** is the 20% darker color. If you saturate the color by 10%, you get **F62E55**, and if you desaturate by 10%, it is **F6607D**.

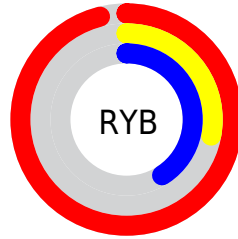
Distribution



Red (96%)

Green (28%)

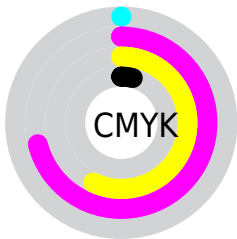
Blue (41%)



Red (96%)

Yellow (28%)

Blue (41%)

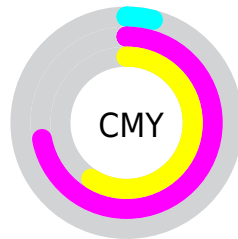


Cyan (0%)

Magenta (71%)

Yellow (57%)

Black (4%)



Cyan (4%)

Magenta (72%)

Yellow (59%)

Brightness & Saturation Gradients

These gradients show how the Hex color F64769 changes by changing the brightness by 10 percent. The first figure shows a shift by +10% for each color and the second figure -10%.

Similar to the brightness gradients but the following saturation gradients show a change of the Hex color F64769 by changing the saturation by 10% instead.

 F64769

 F64769

FFFFFF

 D62351

 FF839C

 B7003A

 FFA0B7

 980025

 FFBDD2

 790011

 FFDBEF

 5B0001

 FFF8FF

 3E0003

 190001

 000000

 F64769

 F64769

 F62E55

 F6607D

 F61641

 F67891

 F60030

 F691A4

 F6A9B8

 F6C2CC

 F6DBE0

 F6F3F4

 F6FFFF

Harmonies

Analogous

The Analogous color harmony consists of three colors that are next to each other on the color wheel.



EA4AA7



F64769



E4612F

Triad

The Triadic color harmony groups three colors that are evenly spaced from another and form a triangle on the color wheel.



F64769



339D2B



0098FF

Complementary

The Complementary color scheme is a pair of colors which are on the opposite of each other on the color wheel.



F64769



47F6D4

Split Complementary

Split-complementary colors differ from the complementary color scheme. The scheme consists of three colors, the original color and two neighbors of the complement color.



00A2E3



F64769



00A36B

Square

The Square scheme is like the rectangle color scheme, but the four colors are evenly spaced on the color wheel.



F64769



849100



00A5AC



4284FF

Rectangle

The Rectangle color scheme consists of four colors that form a rectangle on the color wheel.



F64769



CB7400



00A5AC



009DFB

Sweetspot

The Sweet Spot groups the original color and five complimentary colors.



F64769



FFC9D4



D347F6



806066



000000



808080

Same Dimension

The Same Dimension uses a secret algorithm to generate beautiful new colors.



F64769



FF2650



F67B47



7A6E71



BA0024



3B000B

Inverse Universe

The Inverse Universe completely reimagines the original color for something new.



F64769



FF2650



47C1F6



7A6E71



BA0024



3B000B

Previews

White Background



This preview shows how the Hex color F64769 looks on a white background.

Color Contrast Check

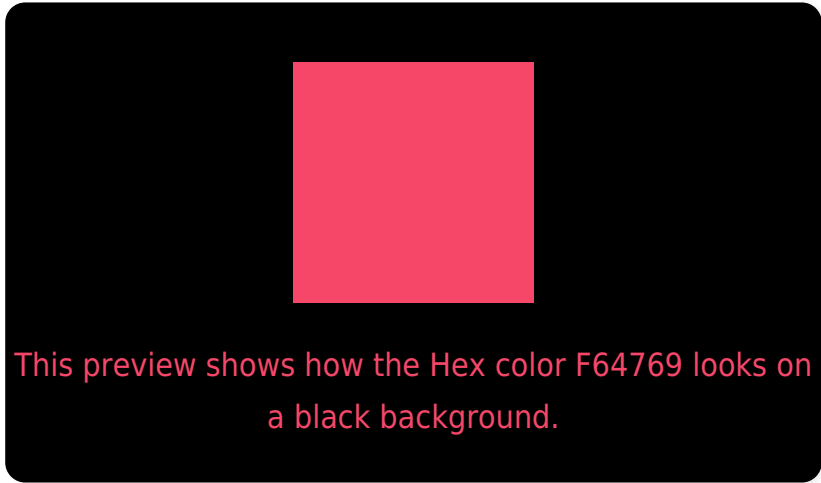
Large Text (above 18pt) WCAG AA ✓ Pass

Any Text WCAG AA × Fail

Large Text (above 18pt) WCAG AAA × Fail

Any Text WCAG AAA × Fail

Black Background



Color Contrast Check

Large Text (above 18pt) WCAG AA ✓ Pass

Any Text WCAG AA ✓ Pass

Large Text (above 18pt) WCAG AAA ✓ Pass

Any Text WCAG AAA × Fail

If you want to check with other color combinations, try the [Color Contrast Checker](#).

Hex F64769 Background



This preview shows how black text looks on a background with the Hex color F64769.

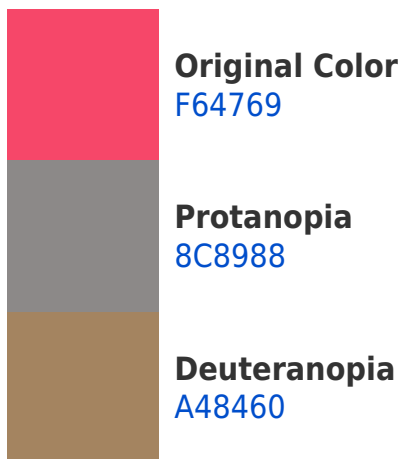


This preview shows how white text looks on a background with the Hex color F64769.

Color Blindness Simulation

Color vision deficiency is a very complex topic, and I could not describe the different causes any better than Wikipedia does, so if you want to learn more, you should check out their [article about color blindness](#).

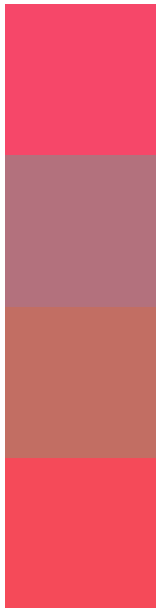
Dichromacy





Tritanopia
F54C50

Trichromacy



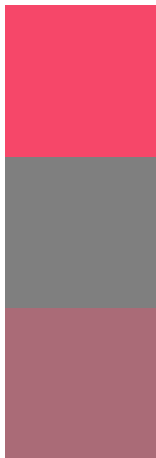
Original Color
F64769

Protanomaly
B3717D

Deuteranomaly
C26E63

Tritanomaly
F54A59

Monochromacy



Original Color
F64769

Achromatopsia
7F7F7F

Achromatomaly
AA6B77

CSS Examples

Text

The CSS property to change the color of the text to Hex F64769 is called "color". The color property can be set on classes, ids or directly on the HTML element.

This example shows how text in the color #F64769 looks like.

```
.text, #text, p{  
    color:#F64769  
}
```

If you want to add a text shadow in that color use the text-shadow property, you can generate a text shadow directly with our [CSS Text Shadow Generator](#).

Here you see how black text with a 4 pixel #F64769 colored shadow looks like.

```
.shadow{ text-shadow: 4px 4px 2px #F64769
}
```

Border

The CSS property to change the border of an element to Hex F64769 is called "border". The border property can be set on classes, ids or directly on the HTML element.

This example shows the color as border, it can be applied via the CSS property "border" or "border-color".

```
.border, #border, table{ border:4px solid
#F64769 }
```

If only the border color should be changed use the property `border-color`.

```
.border{ border-color:#F64769 }
```

If you want to add a box shadow in that color use:

Here you see how a box with a 4 pixel #F64769 colored shadow looks like.

```
.boxshadow{ -moz-box-shadow:4px 4px 4px  
4px #F64769; -webkit-box-shadow:4px 4px  
4px 4px #F64769; box-shadow:4px 4px 4px  
4px #F64769 }
```

Background

The CSS property to change the background color of an element to Hex F64769 is called "background". The background property can be set on classes, ids or directly on the HTML element.

```
.background, #background, body{  
background:#F64769 }
```

If only the background color should be changed can be used:

```
.background{ background-color:#F64769 }
```

This example shows the color as background, it is applied via the CSS property "background".

To optimize and compress your CSS code, you can use our [online CSS compressor and optimizer](#) based on csstidy. If you want to create a linear or radial gradient as background or border, check our [CSS Gradient Generator](#).

Hey! You found this booklet interesting? Support Converting Colors with the new Membership Option!

The pro membership hides all ads, plus gives you double the colors in the color bucket, and more awesome pro features!

[Learn more, Memberships starting at \\$2.50/m!](#)

**Follow me
on Twitter!**

@ConvertingColor