

Converting Colors

Hex(F66E94)

Have a look what the booklet for
Hex(F66E94) contains.

Hex(F66E94)	3
<i>Conversions</i>	4
<i>Details</i>	6
<i>Harmonies</i>	11
<i>Previews</i>	23
<i>Color Blindness Simulation</i>	26
<i>CSS Examples</i>	29

Color

Hex(F66E94)

Conversions

Conversions Part 1

Format	Color
Hex	F66E94
RGB	246, 110, 148
RGB Percent	96%, 43%, 58%
CMY	0.0353, 0.5686, 0.4196
CMYK	0.00, 0.55, 0.40, 0.04
HSL	343°, 88%, 70%
HSV	343°, 55%, 96%
XYZ	48.9273, 32.8828, 31.7852
YIQ	154.9960, 68.8580, 40.6500

Conversions

Conversions Part 2

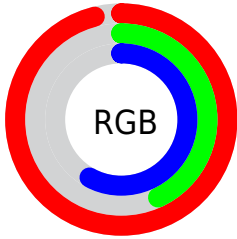
Format	Color
R_{YB}	246, 110, 148
Decimal	16150164
CIE _{Lab}	64.07, 55.61, 5.37
CIE _{LCh}	64, 55.867, 5.517
Yxy	32.8828, 0.4307, 0.2895
Android (android.graphics.Color)	4294340244 (0xFFFF66E94)
YUV	154.9960, -3.4490, 79.8105
Hunter-Lab	57.3435, 51.9505, 7.2763

Details

The Hex color **F66E94** is a light color, and the websafe version is hex **FF6699**. A complement of this color would be **6EF6D0**, and the grayscale version is **9B9B9B**.

A 20% lighter version of the original color is **FFA6CA**, and **BA3662** is the 20% darker color. If you saturate the color by 10%, you get **F65582**, and if you desaturate by 10%, it is **F687A6**.

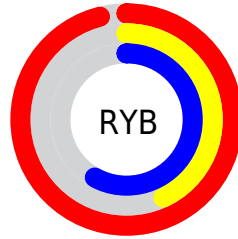
Distribution



Red (96%)

Green (43%)

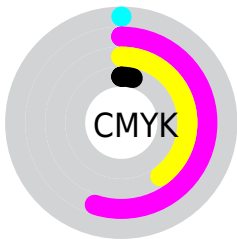
Blue (58%)



Red (96%)

Yellow (43%)

Blue (58%)

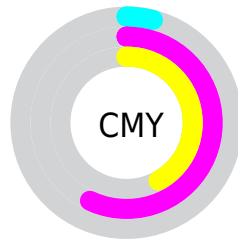


Cyan (0%)

Magenta (55%)

Yellow (40%)

Black (4%)



Cyan (4%)

Magenta (57%)

Yellow (42%)

Brightness & Saturation Gradients

These gradients show how the Hex color F66E94 changes by changing the brightness by 10 percent. The first figure shows a shift by +10% for each color and the second figure -10%.

Similar to the brightness gradients but the following saturation gradients show a change of the Hex color F66E94 by changing the saturation by 10% instead.

 F66E94

 F66E94

FFFFFF

 D8527A

 FFA6CA

 BA3662

 FFC2E6

 9C134A

 FFDFFF

 7F0034

 FFFDFF

 62001F

 470005

 2B0001

 000000

 F66E94

 F66E94

 F65582

 F687A6

 F63D71

 F69FB7

 F6245F

 F6B8C9

 F60C4D

 F6D0DB

 F60045

 F6E9ED

 F6FFFE

 F6FFFF

Harmonies

Analogous

The Analogous color harmony consists of three colors that are next to each other on the color wheel.



DF77C6



F66E94



F17764

Triad

The Triadic color harmony groups three colors that are evenly spaced from another and form a triangle on the color wheel.



F66E94



7AA945



00ABF5

Complementary

The Complementary color scheme is a pair of colors which are on the opposite of each other on the color wheel.



F66E94



6EF6D0

Split Complementary

Split-complementary colors differ from the complementary color scheme. The scheme consists of three colors, the original color and two neighbors of the complement color.



00B2D4



F66E94



26B170

Square

The Square scheme is like the rectangle color scheme, but the four colors are evenly spaced on the color wheel.



F66E94



AE9C30



00B4A3



479EFF

Rectangle

The Rectangle color scheme consists of four colors that form a rectangle on the color wheel.



F66E94



E2834A



00B4A3



00AEED

Sweetspot

The Sweet Spot groups the original color and five complimentary colors.



F66E94



FFD4E0



CF6EF6



80666D



000000



808080

Same Dimension

The Same Dimension uses a secret algorithm to generate beautiful new colors.



F66E94



FF5786



F68B6E



7A6E72



BA0034



3B0010

Inverse Universe

The Inverse Universe completely reimagines the original color for something new.



F66E94



FF5786



6ED9F6



7A6E72



BA0034



3B0010

Previews

White Background



This preview shows how the Hex color F66E94 looks on a white background.

Color Contrast Check

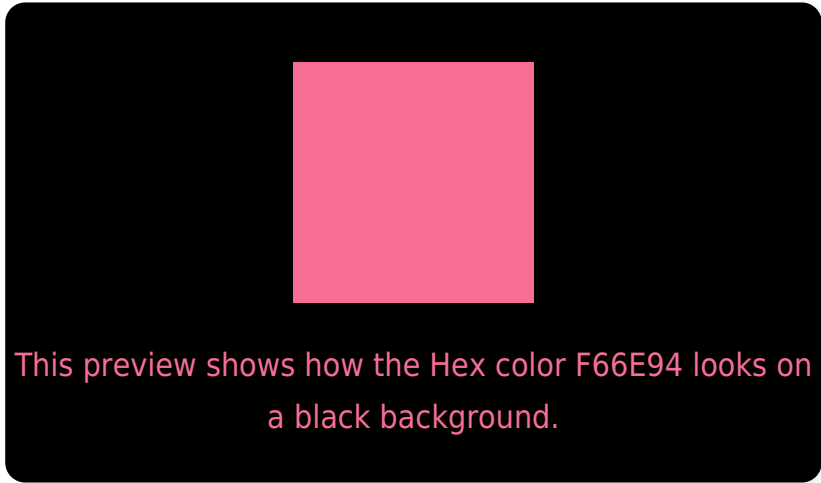
Large Text (above 18pt) WCAG AA × Fail

Any Text WCAG AA × Fail

Large Text (above 18pt) WCAG AAA × Fail

Any Text WCAG AAA × Fail

Black Background



Color Contrast Check

Large Text (above 18pt) WCAG AA ✓ Pass

Any Text WCAG AA ✓ Pass

Large Text (above 18pt) WCAG AAA ✓ Pass

Any Text WCAG AAA ✓ Pass

If you want to check with other color combinations, try the [Color Contrast Checker](#).

Hex F66E94 Background



This preview shows how black text looks on a background with the Hex color F66E94.

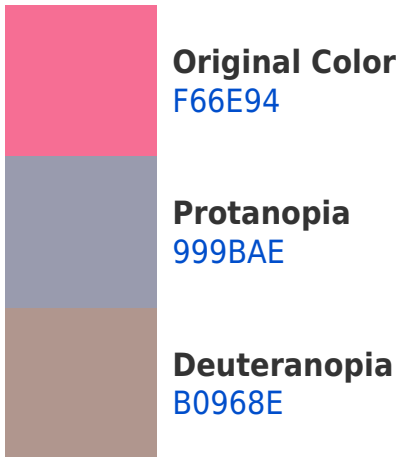


This preview shows how white text looks on a background with the Hex color F66E94.

Color Blindness Simulation

Color vision deficiency is a very complex topic, and I could not describe the different causes any better than Wikipedia does, so if you want to learn more, you should check out their [article about color blindness](#).

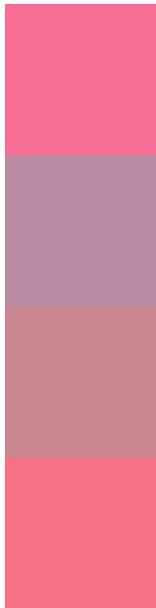
Dichromacy





Tritanopia
F4737B

Trichromacy



Original Color
F66E94

Protanomaly
BB8BA5

Deuteranomaly
C98790

Tritanomaly
F57184

Monochromacy



Original Color
F66E94

Achromatopsia
9B9B9B

Achromatomaly
BC8B98

CSS Examples

Text

The CSS property to change the color of the text to Hex F66E94 is called "color". The color property can be set on classes, ids or directly on the HTML element.

This example shows how text in the color #F66E94 looks like.

```
.text, #text, p{  
    color:#F66E94  
}
```

If you want to add a text shadow in that color use the text-shadow property, you can generate a text shadow directly with our [CSS Text Shadow Generator](#).

Here you see how black text with a 4 pixel #F66E94 colored shadow looks like.

```
.shadow{ text-shadow: 4px 4px 2px #F66E94
}
```

Border

The CSS property to change the border of an element to Hex F66E94 is called "border". The border property can be set on classes, ids or directly on the HTML element.

This example shows the color as border, it can be applied via the CSS property "border" or "border-color".

```
.border, #border, table{ border:4px solid
#F66E94 }
```

If only the border color should be changed use the property `border-color`.

```
.border{ border-color:#F66E94 }
```

If you want to add a box shadow in that color use:

Here you see how a box with a 4 pixel #F66E94 colored shadow looks like.

```
.boxshadow{ -moz-box-shadow:4px 4px 4px  
4px #F66E94; -webkit-box-shadow:4px 4px  
4px 4px #F66E94; box-shadow:4px 4px 4px  
4px #F66E94 }
```

Background

The CSS property to change the background color of an element to Hex F66E94 is called "background". The background property can be set on classes, ids or directly on the HTML element.

```
.background, #background, body{  
background:#F66E94 }
```

If only the background color should be changed can be used:

```
.background{ background-color:#F66E94 }
```

This example shows the color as background, it is applied via the CSS property "background".

To optimize and compress your CSS code, you can use our [online CSS compressor and optimizer](#) based on csstidy. If you want to create a linear or radial gradient as background or border, check our [CSS Gradient Generator](#).

Hey! You found this booklet interesting? Support Converting Colors with the new Membership Option!

The pro membership hides all ads, plus gives you double the colors in the color bucket, and more awesome pro features!

[Learn more, Memberships starting at \\$2.50/m!](#)

**Follow me
on Twitter!**

@ConvertingColor