

Converting Colors

Hex(F67951)

Have a look what the booklet for
Hex(F67951) contains.

Hex(F67951)	3
<i>Conversions</i>	4
<i>Details</i>	6
<i>Harmonies</i>	11
<i>Previews</i>	23
<i>Color Blindness Simulation</i>	26
<i>CSS Examples</i>	29

Color

Hex(F67951)

Conversions

Conversions Part 1

Format	Color
Hex	F67951
RGB	246, 121, 81
RGB Percent	96%, 47%, 32%
CMY	0.0353, 0.5255, 0.6824
CMYK	0.00, 0.51, 0.67, 0.04
HSL	15°, 90%, 64%
HSV	15°, 67%, 96%
XYZ	46.3286, 33.8617, 11.8787
YIQ	153.8150, 87.3400, 14.0600

Conversions

Conversions Part 2

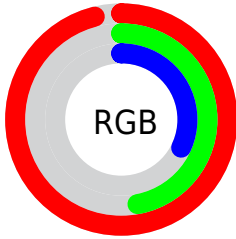
Format	Color
R _{YB}	246, 134, 81
Decimal	16152913
CIE Lab	64.85, 44.99, 43.84
CIE LCh	65, 62.817, 44.253
Yxy	33.8617, 0.5032, 0.3678
Android (android.graphics.Color)	4294342993 (0xFFFF67951)
YUV	153.8150, -35.8978, 80.8462
Hunter-Lab	58.1908, 40.2790, 28.6304

Details

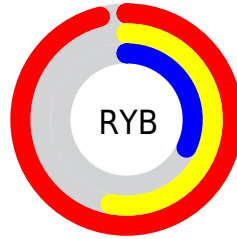
The Hex color **F67951** is a light color, and the websafe version is hex **CC6633**. The color can be described as light muted orange. A complement of this color would be **51CEF6**, and the grayscale version is **9A9A9A**.

A 20% lighter version of the original color is **FFB084**, and **B84422** is the 20% darker color. If you saturate the color by 10%, you get **F66638**, and if you desaturate by 10%, it is **F68C6A**.

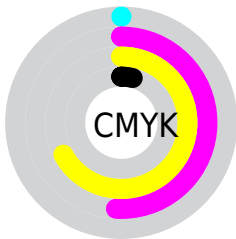
Distribution



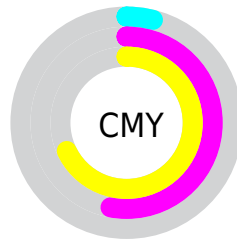
- Red (96%)
- Green (47%)
- Blue (32%)



- Red (96%)
- Yellow (53%)
- Blue (32%)



- Cyan (0%)
- Magenta (51%)
- Yellow (67%)
- Black (4%)



- Cyan (4%)
- Magenta (53%)
- Yellow (68%)

Brightness & Saturation Gradients

These gradients show how the Hex color F67951 changes by changing the brightness by 10 percent. The first figure shows a shift by +10% for each color and the second figure -10%.

Similar to the brightness gradients but the following saturation gradients show a change of the Hex color F67951 by changing the saturation by 10% instead.

 F67951

 F67951

FFFFFF

 D75F39

 FFB084

 B84422

 FFCC9E

 992A09

 FFE9B9

 7B0800

 FFFFD5

 5D0000

 FFFFF2

 410000

 240001

 000000

 F67951

 F67951

 F66638

 F68C6A

 F65420

 F69E82

 F64107

 F6B19B

 F63C00

 F6C4B3

 F6D6CC

 F6E9E5

 F6FBFD

 F6FFFF

Harmonies

Analogous

The Analogous color harmony consists of three colors that are next to each other on the color wheel.



FF6985



F67951



D39029

Triad

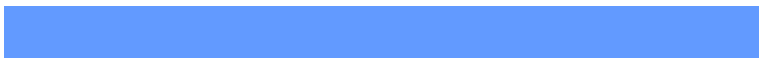
The Triadic color harmony groups three colors that are evenly spaced from another and form a triangle on the color wheel.



F67951



00B67D



629AFF

Complementary

The Complementary color scheme is a pair of colors which are on the opposite of each other on the color wheel.



F67951



51CEF6

Split Complementary

Split-complementary colors differ from the complementary color scheme. The scheme consists of three colors, the original color and two neighbors of the complement color.



00ACFF



F67951



00B8B7

Square

The Square scheme is like the rectangle color scheme, but the four colors are evenly spaced on the color wheel.



F67951



61B048



00B5EB



C283EE

Rectangle

The Rectangle color scheme consists of four colors that form a rectangle on the color wheel.



F67951



B39D1E



00B5EB



10A1FF

Sweetspot

The Sweet Spot groups the original color and five complimentary colors.



F67951



FFD8CC



F651D0



806861



000000



808080

Same Dimension

The Same Dimension uses a secret algorithm to generate beautiful new colors.



F67951



FF6433



F6CA51



7A716E



BA2D00



3B0E00

Inverse Universe

The Inverse Universe completely reimagines the original color for something new.



51CEF6



33CEFF



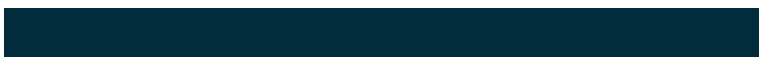
517DF6



6E777A



008DBA



002C3B

Previews

White Background



This preview shows how the Hex color F67951 looks on a white background.

Color Contrast Check

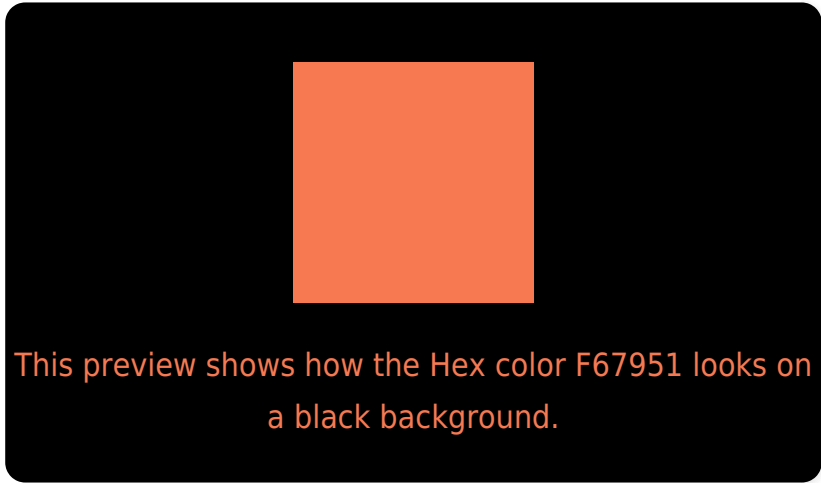
Large Text (above 18pt) WCAG AA × Fail

Any Text WCAG AA × Fail

Large Text (above 18pt) WCAG AAA × Fail

Any Text WCAG AAA × Fail

Black Background



Color Contrast Check

Large Text (above 18pt) WCAG AA ✓ Pass

Any Text WCAG AA ✓ Pass

Large Text (above 18pt) WCAG AAA ✓ Pass

Any Text WCAG AAA ✓ Pass

If you want to check with other color combinations, try the [Color Contrast Checker](#).

Hex F67951 Background



This preview shows how black text looks on a background with the Hex color F67951.



This preview shows how white text looks on a background with the Hex color F67951.

Color Blindness Simulation

Color vision deficiency is a very complex topic, and I could not describe the different causes any better than Wikipedia does, so if you want to learn more, you should check out their [article about color blindness](#).

Dichromacy



Original Color
F67951

Protanopia
AD9E5E

Deuteranopia
C3964B

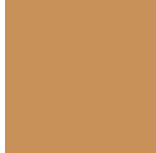


Tritanopia
F8747C

Trichromacy



Original Color
F67951



Protanomaly
C89159



Deuteranomaly
D68B4D

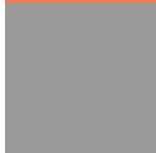


Tritanomaly
F7766C

Monochromacy



Original Color
F67951



Achromatopsia
9A9A9A



Achromatomaly
BB8E7F

CSS Examples

Text

The CSS property to change the color of the text to Hex F67951 is called "color". The color property can be set on classes, ids or directly on the HTML element.

This example shows how text in the color #F67951 looks like.

```
.text, #text, p{  
    color:#F67951  
}
```

If you want to add a text shadow in that color use the text-shadow property, you can generate a text shadow directly with our [CSS Text Shadow Generator](#).

Here you see how black text with a 4 pixel #F67951 colored shadow looks like.

```
.shadow{ text-shadow: 4px 4px 2px #F67951
}
```

Border

The CSS property to change the border of an element to Hex F67951 is called "border". The border property can be set on classes, ids or directly on the HTML element.

This example shows the color as border, it can be applied via the CSS property "border" or "border-color".

```
.border, #border, table{ border:4px solid
#F67951 }
```

If only the border color should be changed use the property `border-color`.

```
.border{ border-color:#F67951 }
```

If you want to add a box shadow in that color use:

Here you see how a box with a 4 pixel #F67951 colored shadow looks like.

```
.boxshadow{ -moz-box-shadow:4px 4px 4px  
4px #F67951; -webkit-box-shadow:4px 4px  
4px 4px #F67951; box-shadow:4px 4px 4px  
4px #F67951 }
```

Background

The CSS property to change the background color of an element to Hex F67951 is called "background". The background property can be set on classes, ids or directly on the HTML element.

```
.background, #background, body{  
background:#F67951 }
```

If only the background color should be changed can be used:

```
.background{ background-color:#F67951 }
```

This example shows the color as background, it is applied via the CSS property "background".

To optimize and compress your CSS code, you can use our [online CSS compressor and optimizer](#) based on csstidy. If you want to create a linear or radial gradient as background or border, check our [CSS Gradient Generator](#).

Hey! You found this booklet interesting? Support Converting Colors with the new Membership Option!

The pro membership hides all ads, plus gives you double the colors in the color bucket, and more awesome pro features!

[Learn more, Memberships starting at \\$2.50/m!](#)

**Follow me
on Twitter!**

@ConvertingColor