

Converting Colors

Hex(F6A687)

Have a look what the booklet for
Hex(F6A687) contains.

Hex(F6A687)	3
<i>Conversions</i>	4
<i>Details</i>	6
<i>Harmonies</i>	11
<i>Previews</i>	23
<i>Color Blindness Simulation</i>	26
<i>CSS Examples</i>	29

Color

Hex(F6A687)

Conversions

Conversions Part 1

Format	Color
Hex	F6A687
RGB	246, 166, 135
RGB Percent	96%, 65%, 53%
CMY	0.0353, 0.3490, 0.4706
CMYK	0.00, 0.33, 0.45, 0.04
HSL	17°, 86%, 75%
HSV	17°, 45%, 96%
XYZ	56.0154, 48.6145, 29.3529
YIQ	186.3860, 57.6310, 7.3190

Conversions

Conversions Part 2

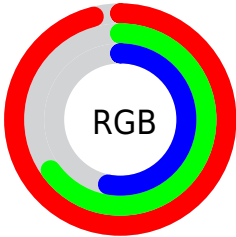
Format	Color
R _Y B	246, 178, 135
Decimal	16164487
CIE Lab	75.21, 26.05, 28.06
CIE LCh	75, 38.292, 47.123
Yxy	48.6145, 0.4181, 0.3628
Android (android.graphics.Color)	4294354567 (0xFFF6A687)
YUV	186.3860, -25.3333, 52.2815
Hunter-Lab	69.7241, 21.3873, 23.8466

Details

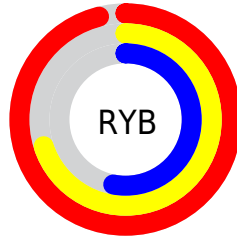
The Hex color **F6A687** is a light color, and the websafe version is hex **CC9966**. A complement of this color would be **87D7F6**, and the grayscale version is **BBBBBB**.

A 20% lighter version of the original color is **FFDDBC**, and **BB7255** is the 20% darker color. If you saturate the color by 10%, you get **F6946E**, and if you desaturate by 10%, it is **F6B8A0**.

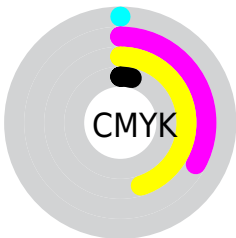
Distribution



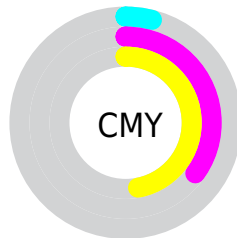
- Red (96%)
- Green (65%)
- Blue (53%)



- Red (96%)
- Yellow (70%)
- Blue (53%)



- Cyan (0%)
- Magenta (33%)
- Yellow (45%)
- Black (4%)



- Cyan (4%)
- Magenta (35%)
- Yellow (47%)

Brightness & Saturation Gradients

These gradients show how the Hex color F6A687 changes by changing the brightness by 10 percent. The first figure shows a shift by +10% for each color and the second figure -10%.

Similar to the brightness gradients but the following saturation gradients show a change of the Hex color F6A687 by changing the saturation by 10% instead.

 F6A687

 F6A687

FFFFFF

 D88B6D

 FFDDBC

 BB7255

 FFFAD8

 9E593D

 FFFFF5

 824027

 662912

 4C1200

 310000

 0E0000

 000000

 F6A687

 F6A687

 F6946E

 F6B8A0

 F68356

 F6C9B8

 F6713D

 F6DBD1

 F65F25

 F6EDE9

 F64D0C

 F6FFFF

 F64500

Harmonies

Analogous

The Analogous color harmony consists of three colors that are next to each other on the color wheel.



FF9FA6



F6A687



DEB275

Triad

The Triadic color harmony groups three colors that are evenly spaced from another and form a triangle on the color wheel.



F6A687



68CBA8



A7B6FC

Complementary

The Complementary color scheme is a pair of colors which are on the opposite of each other on the color wheel.



F6A687



87D7F6

Split Complementary

Split-complementary colors differ from the complementary color scheme. The scheme consists of three colors, the original color and two neighbors of the complement color.



6EC1FD



F6A687



3CCCCD

Square

The Square scheme is like the rectangle color scheme, but the four colors are evenly spaced on the color wheel.



F6A687



95C688



38C9EC



D7A9E9

Rectangle

The Rectangle color scheme consists of four colors that form a rectangle on the color wheel.



F6A687



C9BA72



38C9EC



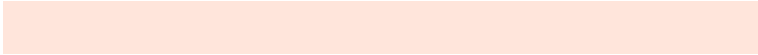
95BAFF

Sweetspot

The Sweet Spot groups the original color and five complimentary colors.



F6A687



FFE5DB



F687D8



80706A



000000



808080

Same Dimension

The Same Dimension uses a secret algorithm to generate beautiful new colors.



F6A687



FF9C75



F6DC87



7A726E



BA3400



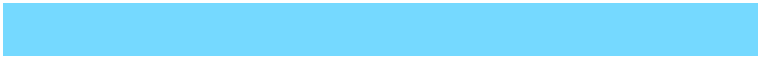
3B1000

Inverse Universe

The Inverse Universe completely reimagines the original color for something new.



87D7F6



75D9FF



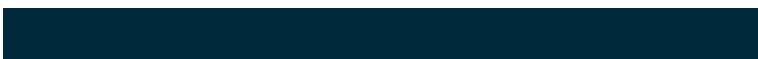
87A1F6



6E777A



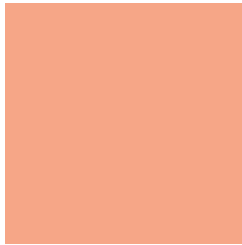
0086BA



002A3B

Previews

White Background



This preview shows how the Hex color F6A687 looks on a white background.

Color Contrast Check

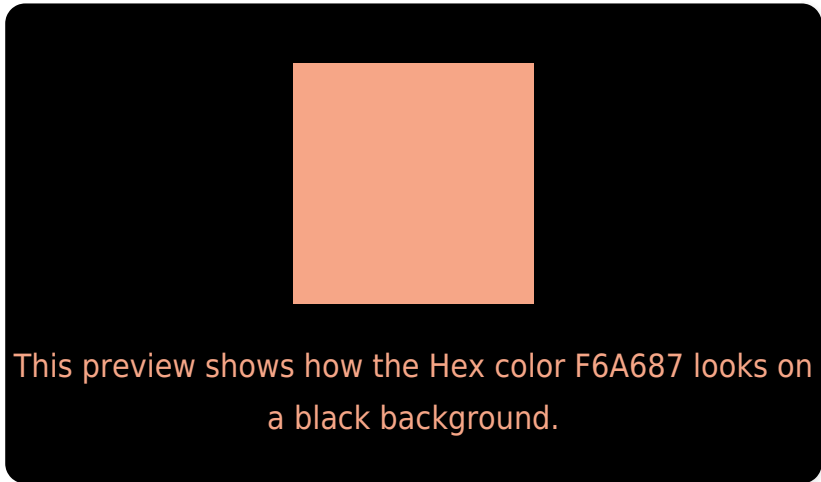
Large Text (above 18pt) WCAG AA × Fail

Any Text WCAG AA × Fail

Large Text (above 18pt) WCAG AAA × Fail

Any Text WCAG AAA × Fail

Black Background



Color Contrast Check

Large Text (above 18pt) WCAG AA ✓ Pass

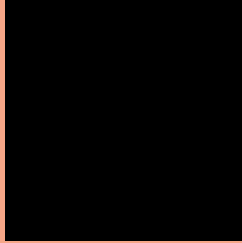
Any Text WCAG AA ✓ Pass

Large Text (above 18pt) WCAG AAA ✓ Pass

Any Text WCAG AAA ✓ Pass

If you want to check with other color combinations, try the [Color Contrast Checker](#).

Hex F6A687 Background



This preview shows how black text looks on a background with the Hex color F6A687.

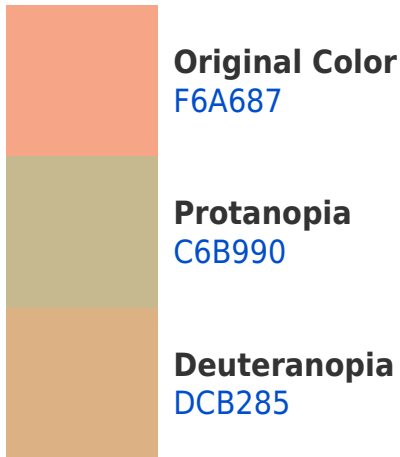


This preview shows how white text looks on a background with the Hex color F6A687.

Color Blindness Simulation

Color vision deficiency is a very complex topic, and I could not describe the different causes any better than Wikipedia does, so if you want to learn more, you should check out their [article about color blindness](#).

Dichromacy



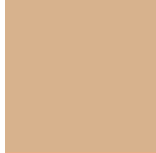


Tritanopia
F9A1AD

Trichromacy



Original Color
F6A687



Protanomaly
D7B28D



Deuteranomaly
E5AE86

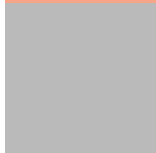


Tritanomaly
F8A39F

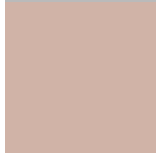
Monochromacy



Original Color
F6A687



Achromatopsia
BABABA



Achromatomaly
D0B3A7

CSS Examples

Text

The CSS property to change the color of the text to Hex F6A687 is called "color". The color property can be set on classes, ids or directly on the HTML element.

This example shows how text in the color #F6A687 looks like.

```
.text, #text, p{  
    color:#F6A687  
}
```

If you want to add a text shadow in that color use the text-shadow property, you can generate a text shadow directly with our [CSS Text Shadow Generator](#).

Here you see how black text with a 4 pixel #F6A687 colored shadow looks like.

```
.shadow{ text-shadow: 4px 4px 2px #F6A687
}
```

Border

The CSS property to change the border of an element to Hex F6A687 is called "border". The border property can be set on classes, ids or directly on the HTML element.

This example shows the color as border, it can be applied via the CSS property "border" or "border-color".

```
.border, #border, table{ border:4px solid
#F6A687 }
```

If only the border color should be changed use the property `border-color`.

```
.border{ border-color:#F6A687 }
```

If you want to add a box shadow in that color use:

Here you see how a box with a 4 pixel #F6A687 colored shadow looks like.

```
.boxshadow{ -moz-box-shadow:4px 4px 4px  
4px #F6A687; -webkit-box-shadow:4px 4px  
4px 4px #F6A687; box-shadow:4px 4px 4px  
4px #F6A687 }
```

Background

The CSS property to change the background color of an element to Hex F6A687 is called "background". The background property can be set on classes, ids or directly on the HTML element.

```
.background, #background, body{  
background:#F6A687 }
```

If only the background color should be changed can be used:

```
.background{ background-color:#F6A687 }
```

This example shows the color as background, it is applied via the CSS property "background".

To optimize and compress your CSS code, you can use our [online CSS compressor and optimizer](#) based on csstidy. If you want to create a linear or radial gradient as background or border, check our [CSS Gradient Generator](#).

Hey! You found this booklet interesting? Support Converting Colors with the new Membership Option!

The pro membership hides all ads, plus gives you double the colors in the color bucket, and more awesome pro features!

[Learn more, Memberships starting at \\$2.50/m!](#)

**Follow me
on Twitter!**

@ConvertingColor