

# Converting Colors

Hex(F6BCE4)

Have a look what the booklet for  
Hex(F6BCE4) contains.

<b>Hex(F6BCE4)</b> .....	3
<i><b>Conversions</b></i> .....	4
<i><b>Details</b></i> .....	6
<i><b>Harmonies</b></i> .....	11
<i><b>Previews</b></i> .....	23
<i><b>Color Blindness Simulation</b></i> .....	26
<i><b>CSS Examples</b></i> .....	29

# **Color**

**Hex(F6BCE4)**

# Conversions

## Conversions Part 1

Format	Color
Hex	F6BCE4
RGB	246, 188, 228
RGB Percent	96%, 74%, 89%
CMY	0.0353, 0.2627, 0.1059
CMYK	0.00, 0.24, 0.07, 0.04
HSL	319°, 76%, 85%
HSV	319°, 24%, 96%
XYZ	69.9928, 61.1607, 81.5150
YIQ	209.9020, 21.7280, 24.7360

# Conversions

## Conversions Part 2

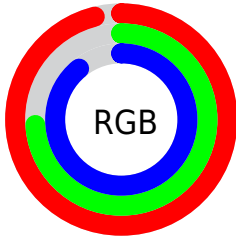
<b>Format</b>	<b>Color</b>
R <sub>Y</sub> B	246, 188, 228
Decimal	16170212
CIE Lab	82.47, 27.10, -11.84
CIE LCh	82, 29.571, 336.407
Yxy	61.1607, 0.3291, 0.2876
Android (android.graphics.Color)	4294360292 (0xFFFF6BCE4)
YUV	209.9020, 8.9223, 31.6579
Hunter-Lab	78.2053, 22.8961, -7.0554

# Details

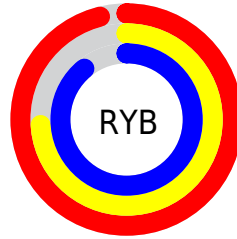
The Hex color **F6BCE4** is a light color, and the websafe version is hex **FFCCFF**. A complement of this color would be **BCF6CE**, and the grayscale version is **D2D2D2**.

A 20% lighter version of the original color is **FFF5FF**, and **BD86AD** is the 20% darker color. If you saturate the color by 10%, you get **F6A3DC**, and if you desaturate by 10%, it is **F6D5EC**.

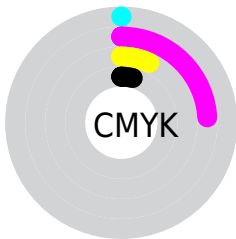
# Distribution



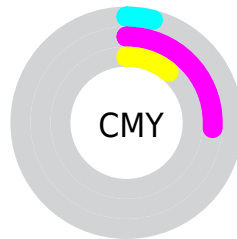
- Red (96%)
- Green (74%)
- Blue (89%)



- Red (96%)
- Yellow (74%)
- Blue (89%)



- Cyan (0%)
- Magenta (24%)
- Yellow (7%)
- Black (4%)



- Cyan (4%)
- Magenta (26%)
- Yellow (11%)

# Brightness & Saturation Gradients

These gradients show how the Hex color F6BCE4 changes by changing the brightness by 10 percent. The first figure shows a shift by +10% for each color and the second figure -10%.

Similar to the brightness gradients but the following saturation gradients show a change of the Hex color F6BCE4 by changing the saturation by 10% instead.



 F6BCE4

FFFFFF

 FFF5FF

 F6BCE4

 D9A1C8

 BD86AD

 A26D92

 875478

 6D3C5F

 542548

 3C0E31

 27001C

 000000

 F6BCE4

 F6BCE4

 F6A3DC

 F6D5EC

 F68BD5

 F6EDF3

 F672CD

 F6FFFB

 F65AC5

 F6FFFF

 F641BE

 F628B6

 F610AF

 F600AA

# Harmonies

## Analogous

The Analogous color harmony consists of three colors that are next to each other on the color wheel.



D9C4FA



F6BCE4



FFB9C8

# Triad

The Triadic color harmony groups three colors that are evenly spaced from another and form a triangle on the color wheel.



F6BCE4



DCCD96



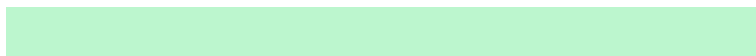
7BDBED

# Complementary

The Complementary color scheme is a pair of colors which are on the opposite of each other on the color wheel.



F6BCE4



BCF6CE

# Split Complementary

Split-complementary colors differ from the complementary color scheme. The scheme consists of three colors, the original color and two neighbors of the complement color.



83DDD2



F6BCE4



BDD5A0

# Square

The Square scheme is like the rectangle color scheme, but the four colors are evenly spaced on the color wheel.



F6BCE4



F4C49B



9DDBB6



8FD6FF

# Rectangle

The Rectangle color scheme consists of four colors that form a rectangle on the color wheel.



F6BCE4



FFBAB6



9DDBB6



7BDCE5



# Sweetspot

The Sweet Spot groups the original color and five complimentary colors.



F6BCE4



FFEDF9



CDBCFC



80757C



000000



808080



# Same Dimension

The Same Dimension uses a secret algorithm to generate beautiful new colors.



F6BCE4



FFB8E9



F6BCC8



7A6E77



BA0080



3B0028



# Inverse Universe

The Inverse Universe completely reimagines the original color for something new.



F6BCE4



FFB8E9



BCF6EA



7A6E77



BA0080



3B0028



# Previews

## White Background



This preview shows how the Hex color F6BCE4 looks on a white background.

## Color Contrast Check

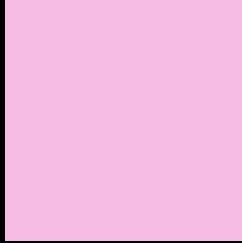
Large Text (above 18pt) WCAG AA × Fail

Any Text WCAG AA × Fail

Large Text (above 18pt) WCAG AAA × Fail

Any Text WCAG AAA × Fail

# Black Background



This preview shows how the Hex color F6BCE4 looks on a black background.

## Color Contrast Check

Large Text (above 18pt) WCAG AA ✓ Pass

Any Text WCAG AA ✓ Pass

Large Text (above 18pt) WCAG AAA ✓ Pass

Any Text WCAG AAA ✓ Pass

If you want to check with other color combinations, try the [Color Contrast Checker](#).



## Hex F6BCE4 Background



This preview shows how black text looks on a background with the Hex color F6BCE4.



This preview shows how white text looks on a background with the Hex color F6BCE4.

# Color Blindness Simulation

Color vision deficiency is a very complex topic, and I could not describe the different causes any better than Wikipedia does, so if you want to learn more, you should check out their [article about color blindness](#).

## Dichromacy





**Tritanopia**  
F3C0CF

# Trichromacy



**Original Color**  
F6BCE4



**Protanomaly**  
D8C6EA



**Deuteranomaly**  
E3C4E3

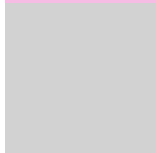


**Tritanomaly**  
F4BFD7

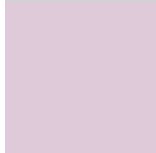
# Monochromacy



**Original Color**  
F6BCE4



**Achromatopsia**  
D2D2D2



**Achromatomaly**  
DFCAD9

# CSS Examples

## Text

The CSS property to change the color of the text to Hex F6BCE4 is called "color". The color property can be set on classes, ids or directly on the HTML element.

This example shows how text in the color #F6BCE4 looks like.

```
.text, #text, p{  
    color:#F6BCE4  
}
```

If you want to add a text shadow in that color use the text-shadow property, you can generate a text shadow directly with our [CSS Text Shadow Generator](#).

Here you see how black text with a 4 pixel #F6BCE4 colored shadow looks like.

```
.shadow{ text-shadow: 4px 4px 2px #F6BCE4
}
```

## Border

The CSS property to change the border of an element to Hex F6BCE4 is called "border". The border property can be set on classes, ids or directly on the HTML element.

This example shows the color as border, it can be applied via the CSS property "border" or "border-color".

```
.border, #border, table{ border:4px solid
#F6BCE4 }
```

If only the border color should be changed use the property `border-color`.

```
.border{ border-color:#F6BCE4 }
```

If you want to add a box shadow in that color use:

Here you see how a box with a 4 pixel #F6BCE4 colored shadow looks like.

```
.boxshadow{ -moz-box-shadow:4px 4px 4px  
4px #F6BCE4; -webkit-box-shadow:4px 4px  
4px 4px #F6BCE4; box-shadow:4px 4px 4px  
4px #F6BCE4 }
```

# Background

The CSS property to change the background color of an element to Hex F6BCE4 is called "background". The background property can be set on classes, ids or directly on the HTML element.

```
.background, #background, body{  
background:#F6BCE4 }
```

If only the background color should be changed can be used:

```
.background{ background-color:#F6BCE4 }
```

This example shows the color as background, it is applied via the CSS property "background".

To optimize and compress your CSS code, you can use our [online CSS compressor and optimizer](#) based on csstidy. If you want to create a linear or radial gradient as background or border, check our [CSS Gradient Generator](#).



Hey! You found this booklet interesting? Support Converting Colors with the new Membership Option!

The pro membership hides all ads, plus gives you double the colors in the color bucket, and more awesome pro features!

**[Learn more, Memberships starting at \\$2.50/m!](#)**

**Follow me  
on Twitter!**

@ConvertingColor