

Converting Colors

Hex(F6C1C2)

Have a look what the booklet for
Hex(F6C1C2) contains.

Hex(F6C1C2)	3
<i>Conversions</i>	4
<i>Details</i>	6
<i>Harmonies</i>	11
<i>Previews</i>	23
<i>Color Blindness Simulation</i>	26
<i>CSS Examples</i>	29

Color

Hex(F6C1C2)

Conversions

Conversions Part 1

Format	Color
Hex	F6C1C2
RGB	246, 193, 194
RGB Percent	96%, 76%, 76%
CMY	0.0353, 0.2431, 0.2392
CMYK	0.00, 0.22, 0.21, 0.04
HSL	359°, 75%, 86%
HSV	359°, 22%, 96%
XYZ	66.8136, 61.6278, 59.4128
YIQ	208.9610, 31.2670, 11.5470

Conversions

Conversions Part 2

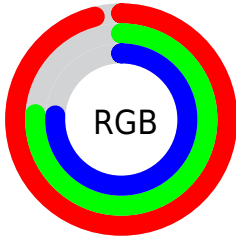
Format	Color
R _Y B	246, 193, 194
Decimal	16171458
CIE Lab	82.72, 19.08, 6.77
CIE LCh	83, 20.244, 19.527
Yxy	61.6278, 0.3557, 0.3281
Android (android.graphics.Color)	4294361538 (0xFFFF6C1C2)
YUV	208.9610, -7.3758, 32.4832
Hunter-Lab	78.5034, 14.5390, 10.0806

Details

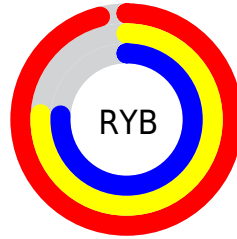
The Hex color **F6C1C2** is a light color, and the websafe version is hex **FFCCCC**. A complement of this color would be **C1F6F5**, and the grayscale version is **D1D1D1**.

A 20% lighter version of the original color is **FFFAFA**, and **BD8B8C** is the 20% darker color. If you saturate the color by 10%, you get **F6A8AA**, and if you desaturate by 10%, it is **F6DADA**.

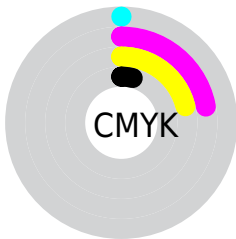
Distribution



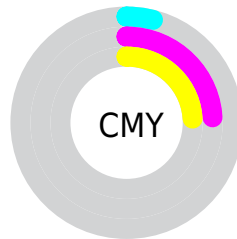
- Red (96%)
- Green (76%)
- Blue (76%)



- Red (96%)
- Yellow (76%)
- Blue (76%)



- Cyan (0%)
- Magenta (22%)
- Yellow (21%)
- Black (4%)



- Cyan (4%)
- Magenta (24%)
- Yellow (24%)

Brightness & Saturation Gradients

These gradients show how the Hex color F6C1C2 changes by changing the brightness by 10 percent. The first figure shows a shift by +10% for each color and the second figure -10%.

Similar to the brightness gradients but the following saturation gradients show a change of the Hex color F6C1C2 by changing the saturation by 10% instead.

 F6C1C2

FFFFFF

 FFFAFA

 F6C1C2

 D9A6A7

 BD8B8C

 A17273

 86595A

 6C4143

 532A2D

 3B1518

 260000

 000000

 F6C1C2

 F6C1C2

 F6A8AA

 F6DADA

 F69092

 F6F2F2

 F6777A

 F6FFFF

 F65F61

 F64649

 F62D31

 F61519

 F60005

Harmonies

Analogous

The Analogous color harmony consists of three colors that are next to each other on the color wheel.



F0C1D5



F6C1C2



F1C5B2

Triad

The Triadic color harmony groups three colors that are evenly spaced from another and form a triangle on the color wheel.



F6C1C2



BAD6B5



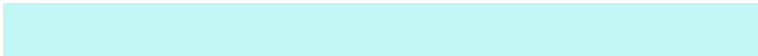
B0D2F3

Complementary

The Complementary color scheme is a pair of colors which are on the opposite of each other on the color wheel.



F6C1C2



C1F6F5

Split Complementary

Split-complementary colors differ from the complementary color scheme. The scheme consists of three colors, the original color and two neighbors of the complement color.



9FD6EA



F6C1C2



A6D9C6

Square

The Square scheme is like the rectangle color scheme, but the four colors are evenly spaced on the color wheel.



F6C1C2



D0D1AA



9CD9DA



C9CBF2

Rectangle

The Rectangle color scheme consists of four colors that form a rectangle on the color wheel.



F6C1C2



E9C8AB



9CD9DA



A9D3F1

Sweetspot

The Sweet Spot groups the original color and five complimentary colors.



F6C1C2



FFF0F0



F4C1F6



807777



000000



808080

Same Dimension

The Same Dimension uses a secret algorithm to generate beautiful new colors.



F6C1C2



FFBDBE



F6DAC1



7A6E6E



BA0004



3B0001

Inverse Universe

The Inverse Universe completely reimagines the original color for something new.



F6C1C2



FFBDBE



C1DDF6



7A6E6E



BA0004



3B0001

Previews

White Background



This preview shows how the Hex color F6C1C2 looks on a white background.

Color Contrast Check

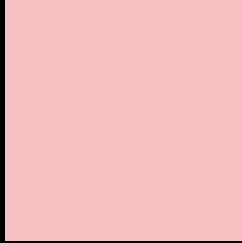
Large Text (above 18pt) WCAG AA × Fail

Any Text WCAG AA × Fail

Large Text (above 18pt) WCAG AAA × Fail

Any Text WCAG AAA × Fail

Black Background



This preview shows how the Hex color F6C1C2 looks on a black background.

Color Contrast Check

Large Text (above 18pt) WCAG AA ✓ Pass

Any Text WCAG AA ✓ Pass

Large Text (above 18pt) WCAG AAA ✓ Pass

Any Text WCAG AAA ✓ Pass

If you want to check with other color combinations, try the [Color Contrast Checker](#).

Hex F6C1C2 Background



This preview shows how black text looks on a background with the Hex color F6C1C2.

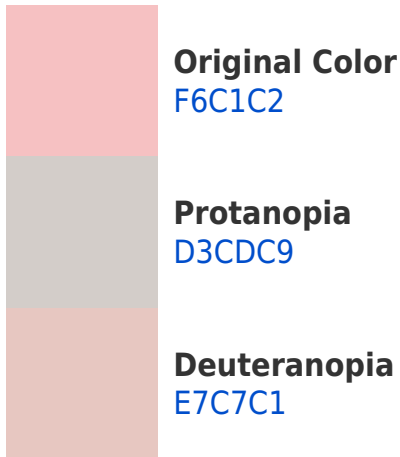


This preview shows how white text looks on a background with the Hex color F6C1C2.

Color Blindness Simulation

Color vision deficiency is a very complex topic, and I could not describe the different causes any better than Wikipedia does, so if you want to learn more, you should check out their [article about color blindness](#).

Dichromacy



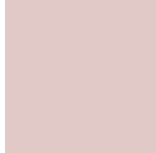


Tritanopia
F7BFCE

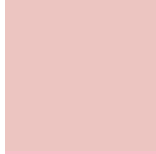
Trichromacy



Original Color
F6C1C2



Protanomaly
E0C9C6



Deuteranomaly
ECC5C1

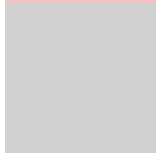


Tritanomaly
F7C0CA

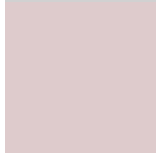
Monochromacy



Original Color
F6C1C2



Achromatopsia
D1D1D1



Achromatomaly
DECBCC

CSS Examples

Text

The CSS property to change the color of the text to Hex F6C1C2 is called "color". The color property can be set on classes, ids or directly on the HTML element.

This example shows how text in the color #F6C1C2 looks like.

```
.text, #text, p{  
    color:#F6C1C2  
}
```

If you want to add a text shadow in that color use the text-shadow property, you can generate a text shadow directly with our [CSS Text Shadow Generator](#).

Here you see how black text with a 4 pixel #F6C1C2 colored shadow looks like.

```
.shadow{ text-shadow: 4px 4px 2px #F6C1C2
}
```

Border

The CSS property to change the border of an element to Hex F6C1C2 is called "border". The border property can be set on classes, ids or directly on the HTML element.

This example shows the color as border, it can be applied via the CSS property "border" or "border-color".

```
.border, #border, table{ border:4px solid
#F6C1C2 }
```

If only the border color should be changed use the property `border-color`.

```
.border{ border-color:#F6C1C2 }
```

If you want to add a box shadow in that color use:

Here you see how a box with a 4 pixel #F6C1C2 colored shadow looks like.

```
.boxshadow{ -moz-box-shadow:4px 4px 4px  
4px #F6C1C2; -webkit-box-shadow:4px 4px  
4px 4px #F6C1C2; box-shadow:4px 4px 4px  
4px #F6C1C2 }
```

Background

The CSS property to change the background color of an element to Hex F6C1C2 is called "background". The background property can be set on classes, ids or directly on the HTML element.

```
.background, #background, body{  
background:#F6C1C2 }
```

If only the background color should be changed can be used:

```
.background{ background-color:#F6C1C2 }
```

This example shows the color as background, it is applied via the CSS property "background".

To optimize and compress your CSS code, you can use our [online CSS compressor and optimizer](#) based on csstidy. If you want to create a linear or radial gradient as background or border, check our [CSS Gradient Generator](#).

Hey! You found this booklet interesting? Support Converting Colors with the new Membership Option!

The pro membership hides all ads, plus gives you double the colors in the color bucket, and more awesome pro features!

[Learn more, Memberships starting at \\$2.50/m!](#)

**Follow me
on Twitter!**

@ConvertingColor