

# Converting Colors

Hex(F6C9EE)

Have a look what the booklet for  
Hex(F6C9EE) contains.

<b>Hex(F6C9EE)</b> .....	3
<i><b>Conversions</b></i> .....	4
<i><b>Details</b></i> .....	6
<i><b>Harmonies</b></i> .....	11
<i><b>Previews</b></i> .....	23
<i><b>Color Blindness Simulation</b></i> .....	26
<i><b>CSS Examples</b></i> .....	29

# **Color**

**Hex(F6C9EE)**

# Conversions

## Conversions Part 1

Format	Color
Hex	F6C9EE
RGB	246, 201, 238
RGB Percent	96%, 79%, 93%
CMY	0.0353, 0.2118, 0.0667
CMYK	0.00, 0.18, 0.03, 0.04
HSL	311°, 71%, 88%
HSV	311°, 18%, 96%
XYZ	74.3253, 67.5392, 90.0079
YIQ	218.6730, 14.9430, 21.0470

# Conversions

## Conversions Part 2

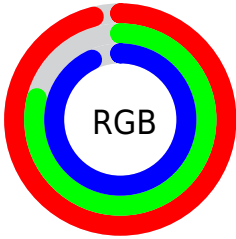
Format	Color
R <sub>Y</sub> B	246, 201, 238
Decimal	16173550
CIE Lab	85.78, 21.96, -12.23
CIE LCh	86, 25.135, 330.891
Yxy	67.5392, 0.3205, 0.2913
Android (android.graphics.Color)	4294363630 (0xFFFF6C9EE)
YUV	218.6730, 9.5282, 23.9658
Hunter-Lab	82.1822, 17.6159, -7.4083

# Details

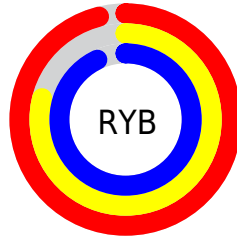
The Hex color **F6C9EE** is a light color, and the websafe version is hex **FFCCFF**. A complement of this color would be **C9F6D1**, and the grayscale version is **DBDBDB**.

A 20% lighter version of the original color is **FFFFFF**, and **BD93B6** is the 20% darker color. If you saturate the color by 10%, you get **F6B0EA**, and if you desaturate by 10%, it is **F6E2F2**.

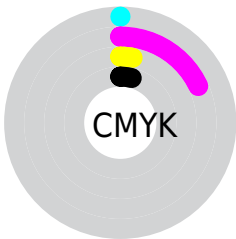
# Distribution



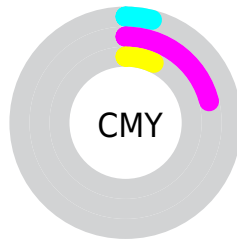
- Red (96%)
- Green (79%)
- Blue (93%)



- Red (96%)
- Yellow (79%)
- Blue (93%)



- Cyan (0%)
- Magenta (18%)
- Yellow (3%)
- Black (4%)



- Cyan (4%)
- Magenta (21%)
- Yellow (7%)

# Brightness & Saturation Gradients

These gradients show how the Hex color F6C9EE changes by changing the brightness by 10 percent. The first figure shows a shift by +10% for each color and the second figure -10%.

Similar to the brightness gradients but the following saturation gradients show a change of the Hex color F6C9EE by changing the saturation by 10% instead.



 F6C9EE

FFFFFF

 F6C9EE

 D9AED2

 BD93B6

 A2799B

 886081

 6E4868

 553150

 3D1B39

 270423

 04000C

 F6C9EE

 F6C9EE

 F6B0EA

 F6E2F2

 F698E5

 F6FAF7

 F67FE1

 F6FFFB

 F667DD

 F6FFFF

 F64ED8

 F635D4

 F61DCF

 F604CB

 F600CA

# Harmonies

## Analogous

The Analogous color harmony consists of three colors that are next to each other on the color wheel.



DBD0FF



F6C9EE



FFC6D7

# Triad

The Triadic color harmony groups three colors that are evenly spaced from another and form a triangle on the color wheel.



F6C9EE



E8D5A7



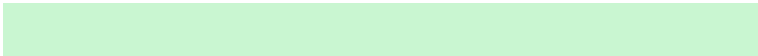
94E3EE

# Complementary

The Complementary color scheme is a pair of colors which are on the opposite of each other on the color wheel.



F6C9EE



C9F6D1

# Split Complementary

Split-complementary colors differ from the complementary color scheme. The scheme consists of three colors, the original color and two neighbors of the complement color.



9DE4D6



F6C9EE



CEDCAD

# Square

The Square scheme is like the rectangle color scheme, but the four colors are evenly spaced on the color wheel.



F6C9EE



FCCDAE



B3E2BF



A0DFFF

# Rectangle

The Rectangle color scheme consists of four colors that form a rectangle on the color wheel.



F6C9EE



FFC6C7



B3E2BF



95E4E6



# Sweetspot

The Sweet Spot groups the original color and five complimentary colors.



F6C9EE



FFF2FD



D0C9F6



80787E



000000



808080



# Same Dimension

The Same Dimension uses a secret algorithm to generate beautiful new colors.



F6C9EE



FFC7F5



F6C9D8



7A6E78



BA0099



3B0030



# Inverse Universe

The Inverse Universe completely reimagines the original color for something new.



F6C9EE



FFC7F5



C9F6E7



7A6E78



BA0099



3B0030



# Previews

## White Background



This preview shows how the Hex color F6C9EE looks on a white background.

## Color Contrast Check

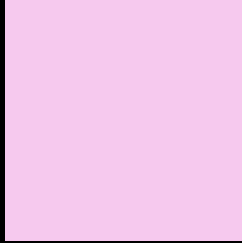
Large Text (above 18pt) WCAG AA × Fail

Any Text WCAG AA × Fail

Large Text (above 18pt) WCAG AAA × Fail

Any Text WCAG AAA × Fail

# Black Background



This preview shows how the Hex color F6C9EE looks on a black background.

## Color Contrast Check

Large Text (above 18pt) WCAG AA ✓ Pass

Any Text WCAG AA ✓ Pass

Large Text (above 18pt) WCAG AAA ✓ Pass

Any Text WCAG AAA ✓ Pass

If you want to check with other color combinations, try the [Color Contrast Checker](#).



## Hex F6C9EE Background



This preview shows how black text looks on a background with the Hex color F6C9EE.

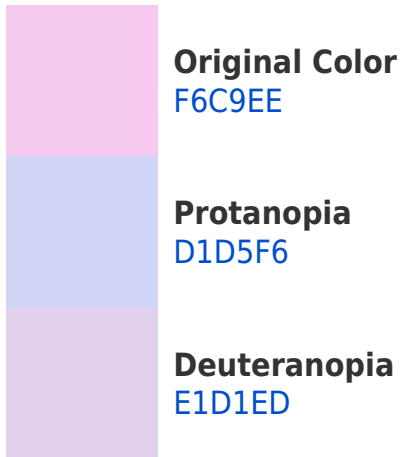


This preview shows how white text looks on a background with the Hex color F6C9EE.

# Color Blindness Simulation

Color vision deficiency is a very complex topic, and I could not describe the different causes any better than Wikipedia does, so if you want to learn more, you should check out their [article about color blindness](#).

## Dichromacy

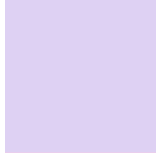




# Trichromacy



**Original Color**  
F6C9EE



**Protanomaly**  
DED1F3



**Deuteranomaly**  
E9CEED

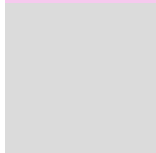


**Tritanomaly**  
F5CBE3

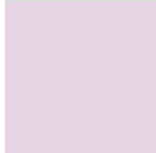
# Monochromacy



**Original Color**  
F6C9EE



**Achromatopsia**  
DBDBDB



**Achromatomaly**  
E5D4E2

# CSS Examples

## Text

The CSS property to change the color of the text to Hex F6C9EE is called "color". The color property can be set on classes, ids or directly on the HTML element.

This example shows how text in the color #F6C9EE looks like.

```
.text, #text, p{  
    color:#F6C9EE  
}
```

If you want to add a text shadow in that color use the text-shadow property, you can generate a text shadow directly with our [CSS Text Shadow Generator](#).

Here you see how black text with a 4 pixel #F6C9EE colored shadow looks like.

```
.shadow{ text-shadow: 4px 4px 2px #F6C9EE
}
```

## Border

The CSS property to change the border of an element to Hex F6C9EE is called "border". The border property can be set on classes, ids or directly on the HTML element.

This example shows the color as border, it can be applied via the CSS property "border" or "border-color".

```
.border, #border, table{ border:4px solid
#F6C9EE }
```

If only the border color should be changed use the property `border-color`.

```
.border{ border-color:#F6C9EE }
```

If you want to add a box shadow in that color use:

Here you see how a box with a 4 pixel #F6C9EE colored shadow looks like.

```
.boxshadow{ -moz-box-shadow:4px 4px 4px  
4px #F6C9EE; -webkit-box-shadow:4px 4px  
4px 4px #F6C9EE; box-shadow:4px 4px 4px  
4px #F6C9EE }
```

# Background

The CSS property to change the background color of an element to Hex F6C9EE is called "background". The background property can be set on classes, ids or directly on the HTML element.

```
.background, #background, body{  
background:#F6C9EE }
```

If only the background color should be changed can be used:

```
.background{ background-color:#F6C9EE }
```

This example shows the color as background, it is applied via the CSS property "background".

To optimize and compress your CSS code, you can use our [online CSS compressor and optimizer](#) based on csstidy. If you want to create a linear or radial gradient as background or border, check our [CSS Gradient Generator](#).



Hey! You found this booklet interesting? Support Converting Colors with the new Membership Option!

The pro membership hides all ads, plus gives you double the colors in the color bucket, and more awesome pro features!

**[Learn more, Memberships starting at \\$2.50/m!](#)**

**Follow me  
on Twitter!**

@ConvertingColor