

Converting Colors

Hex(F73781)

Have a look what the booklet for
Hex(F73781) contains.

Hex(F73781)	3
<i>Conversions</i>	4
<i>Details</i>	6
<i>Harmonies</i>	11
<i>Previews</i>	23
<i>Color Blindness Simulation</i>	26
<i>CSS Examples</i>	29

Color

Hex(F73781)

Conversions

Conversions Part 1

Format	Color
Hex	F73781
RGB	247, 55, 129
RGB Percent	97%, 22%, 51%
CMY	0.0314, 0.7843, 0.4941
CMYK	0.00, 0.78, 0.48, 0.03
HSL	337°, 92%, 59%
HSV	337°, 78%, 97%
XYZ	43.6864, 24.0915, 23.1165
YIQ	120.8440, 90.6780, 63.7180

Conversions

Conversions Part 2

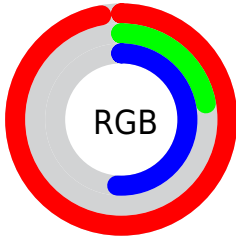
Format	Color
R_{YB}	247, 55, 129
Decimal	16201601
CIE _{Lab}	56.18, 74.75, 5.14
CIE _{LCh}	56, 74.927, 3.930
Yxy	24.0915, 0.4806, 0.2650
Android (android.graphics.Color)	4294391681 (0xFFFF73781)
YUV	120.8440, 4.0209, 110.6388
Hunter-Lab	49.0831, 72.9785, 6.4346

Details

The Hex color **F73781** is a dark color, and the websafe version is hex **FF3399**. The color can be described as middle washed rose. A complement of this color would be **37F7AD**, and the grayscale version is **797979**.

A 20% lighter version of the original color is **FF78B6**, and **B80050** is the 20% darker color. If you saturate the color by 10%, you get **F71E72**, and if you desaturate by 10%, it is **F75090**.

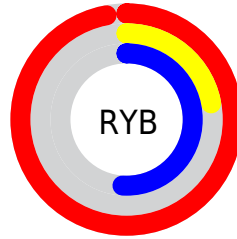
Distribution



Red (97%)

Green (22%)

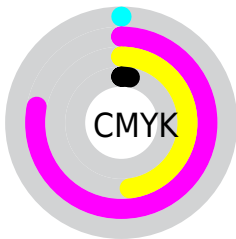
Blue (51%)



Red (97%)

Yellow (22%)

Blue (51%)

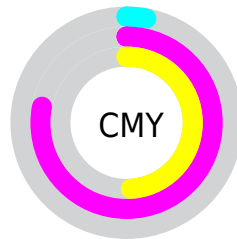


Cyan (0%)

Magenta (78%)

Yellow (48%)

Black (3%)



Cyan (3%)

Magenta (78%)

Yellow (49%)

Brightness & Saturation Gradients

These gradients show how the Hex color F73781 changes by changing the brightness by 10 percent. The first figure shows a shift by +10% for each color and the second figure -10%.

Similar to the brightness gradients but the following saturation gradients show a change of the Hex color F73781 by changing the saturation by 10% instead.

 F73781

 F73781

FFFFFF

 D80068

 FF78B6

 B80050

 FF96D1

 9A003A

 FFB3ED

 7B0025

 FFD1FF

 5D000F

 FFEFFF

 400003

 1D0001

 000000

 F73781

 F73781

 F71E72

 F75090

 F70663

 F7689F

 F7005F

 F781AF

 F79ABE

 F7B3CD

 F7CBDC

 F7E4EB

 F7FDFA

 F7FFFF

Harmonies

Analogous

The Analogous color harmony consists of three colors that are next to each other on the color wheel.



DA4DC1



F73781



F04C42

Triad

The Triadic color harmony groups three colors that are evenly spaced from another and form a triangle on the color wheel.



F73781



579700



009CFC

Complementary

The Complementary color scheme is a pair of colors which are on the opposite of each other on the color wheel.



F73781



37F7AD

Split Complementary

Split-complementary colors differ from the complementary color scheme. The scheme consists of three colors, the original color and two neighbors of the complement color.



00A3CE



F73781



00A049

Square

The Square scheme is like the rectangle color scheme, but the four colors are evenly spaced on the color wheel.



F73781



9B8700



00A38E



008CFF

Rectangle

The Rectangle color scheme consists of four colors that form a rectangle on the color wheel.



F73781



DC6215



00A38E



009FF0

Sweetspot

The Sweet Spot groups the original color and five complimentary colors.



F73781



FFC4DB



AA37F7



805C6A



000000



808080

Same Dimension

The Same Dimension uses a secret algorithm to generate beautiful new colors.



F73781



FF126D



F74A37



7A6E73



BA0048



3B0017

Inverse Universe

The Inverse Universe completely reimagines the original color for something new.



F73781



FF126D



37E4F7



7A6E73



BA0048



3B0017

Previews

White Background



This preview shows how the Hex color F73781 looks on a white background.

Color Contrast Check

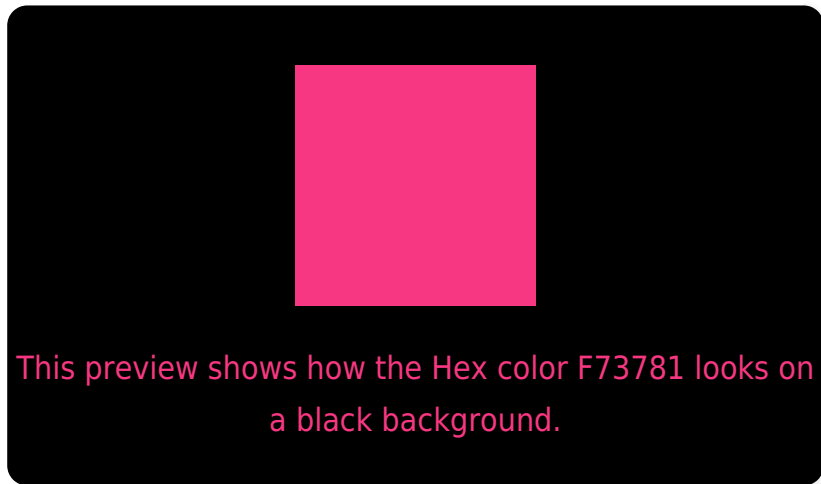
Large Text (above 18pt) WCAG AA ✓ Pass

Any Text WCAG AA × Fail

Large Text (above 18pt) WCAG AAA × Fail

Any Text WCAG AAA × Fail

Black Background



Color Contrast Check

Large Text (above 18pt) WCAG AA ✓ Pass

Any Text WCAG AA ✓ Pass

Large Text (above 18pt) WCAG AAA ✓ Pass

Any Text WCAG AAA × Fail

If you want to check with other color combinations, try the [Color Contrast Checker](#).

Hex F73781 Background



This preview shows how black text looks on a background with the Hex color F73781.

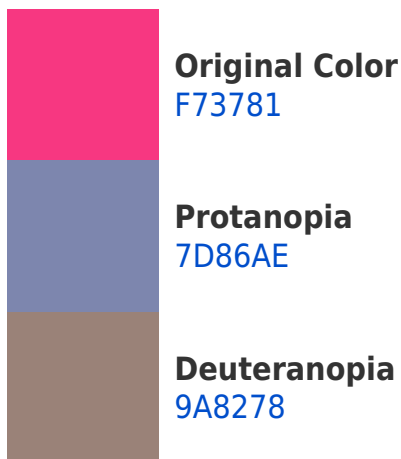


This preview shows how white text looks on a background with the Hex color F73781.

Color Blindness Simulation

Color vision deficiency is a very complex topic, and I could not describe the different causes any better than Wikipedia does, so if you want to learn more, you should check out their [article about color blindness](#).

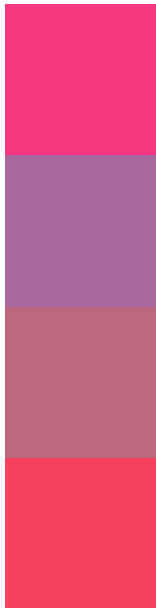
Dichromacy





Tritanopia
F44649

Trichromacy



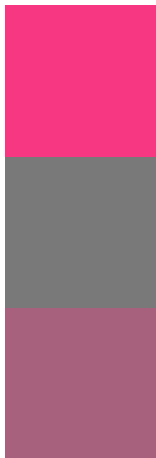
Original Color
F73781

Protanomaly
A9699E

Deuteranomaly
BC677B

Tritanomaly
F5415D

Monochromacy



Original Color
F73781

Achromatopsia
797979

Achromatomaly
A7617C

CSS Examples

Text

The CSS property to change the color of the text to Hex F73781 is called "color". The color property can be set on classes, ids or directly on the HTML element.

This example shows how text in the color #F73781 looks like.

```
.text, #text, p{  
  color:#F73781  
}
```

If you want to add a text shadow in that color use the text-shadow property, you can generate a text shadow directly with our [CSS Text Shadow Generator](#).

Here you see how black text with a 4 pixel #F73781 colored shadow looks like.

```
.shadow{ text-shadow: 4px 4px 2px #F73781
}
```

Border

The CSS property to change the border of an element to Hex F73781 is called "border". The border property can be set on classes, ids or directly on the HTML element.

This example shows the color as border, it can be applied via the CSS property "border" or "border-color".

```
.border, #border, table{ border:4px solid
#F73781 }
```

If only the border color should be changed use the property `border-color`.

```
.border{ border-color:#F73781 }
```

If you want to add a box shadow in that color use:

Here you see how a box with a 4 pixel #F73781 colored shadow looks like.

```
.boxshadow{ -moz-box-shadow:4px 4px 4px  
4px #F73781; -webkit-box-shadow:4px 4px  
4px 4px #F73781; box-shadow:4px 4px 4px  
4px #F73781 }
```

Background

The CSS property to change the background color of an element to Hex F73781 is called "background". The background property can be set on classes, ids or directly on the HTML element.

```
.background, #background, body{  
background:#F73781 }
```

If only the background color should be changed can be used:

```
.background{ background-color:#F73781 }
```

This example shows the color as background, it is applied via the CSS property "background".

To optimize and compress your CSS code, you can use our [online CSS compressor and optimizer](#) based on csstidy. If you want to create a linear or radial gradient as background or border, check our [CSS Gradient Generator](#).

Hey! You found this booklet interesting? Support Converting Colors with the new Membership Option!

The pro membership hides all ads, plus gives you double the colors in the color bucket, and more awesome pro features!

[Learn more, Memberships starting at \\$2.50/m!](#)

**Follow me
on Twitter!**

@ConvertingColor