

Converting Colors

Hex(F7406A)

Have a look what the booklet for
Hex(F7406A) contains.

| | |
|--|----|
| Hex(F7406A) | 3 |
| <i>Conversions</i> | 4 |
| <i>Details</i> | 6 |
| <i>Harmonies</i> | 11 |
| <i>Previews</i> | 23 |
| <i>Color Blindness Simulation</i> | 26 |
| <i>CSS Examples</i> | 29 |

Color

Hex(F7406A)

Conversions

Conversions Part 1

| Format | Color |
|---------------|----------------------------|
| Hex | F7406A |
| RGB | 247, 64, 106 |
| RGB Percent | 97%, 25%, 42% |
| CMY | 0.0314, 0.7490, 0.5843 |
| CMYK | 0.00, 0.74, 0.57, 0.03 |
| HSL | 346°, 92%, 61% |
| HSV | 346°, 74%, 97% |
| XYZ | 42.7927, 24.4816, 16.1057 |
| YIQ | 123.5050, 95.5860, 51.8580 |

Conversions

Conversions Part 2

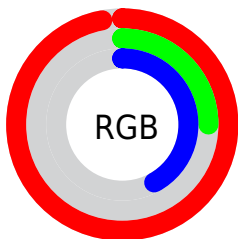
| Format | Color |
|-------------------------------------|--------------------------------|
| R_{YB} | 247, 64, 106 |
| Decimal | 16203882 |
| CIE _{Lab} | 56.57, 70.43, 19.34 |
| CIE _{LCh} | 57, 73.039, 15.357 |
| Yxy | 24.4816, 0.5132, 0.2936 |
| Android (android.graphics.Color) | 4294393962 (0xFFFF7406A) |
| YUV | 123.5050, -8.6300, 108.3051 |
| Hunter-Lab | 49.4788, 67.7910, 15.3359 |

Details

The Hex color **F7406A** is a dark color, and the websafe version is hex **FF3366**. The color can be described as middle washed rose. A complement of this color would be **40F7CD**, and the grayscale version is **7C7C7C**.

A 20% lighter version of the original color is **FF7D9D**, and **B8003B** is the 20% darker color. If you saturate the color by 10%, you get **F72757**, and if you desaturate by 10%, it is **F7597D**.

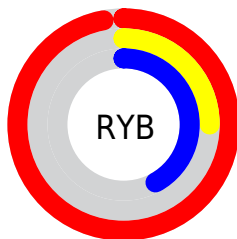
Distribution



Red (97%)

Green (25%)

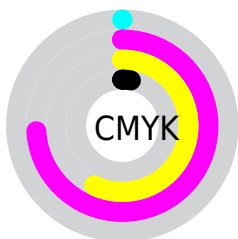
Blue (42%)



Red (97%)

Yellow (25%)

Blue (42%)

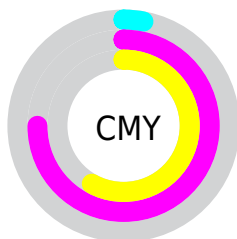


Cyan (0%)

Magenta (74%)

Yellow (57%)

Black (3%)



Cyan (3%)

Magenta (75%)

Yellow (58%)

Brightness & Saturation Gradients

These gradients show how the Hex color F7406A changes by changing the brightness by 10 percent. The first figure shows a shift by +10% for each color and the second figure -10%.

Similar to the brightness gradients but the following saturation gradients show a change of the Hex color F7406A by changing the saturation by 10% instead.

 F7406A

 F7406A

FFFFFF

 D71752

 FF7D9D

 B8003B

 FF9BB8

 990026

 FFB8D3

 7A0012

 FFD6F0

 5B0002

 FFF4FF

 3E0003

 190001

 000000

 F7406A

 F7406A

 F72757

 F7597D

 F70F44

 F77190

 F70039

 F78AA3

 F7A3B6

 F7BCC9

 F7D4DC

 F7EDEF

 F7FFFF

Harmonies

Analogous

The Analogous color harmony consists of three colors that are next to each other on the color wheel.



E946AA



F7406A



E55B2E

Triad

The Triadic color harmony groups three colors that are evenly spaced from another and form a triangle on the color wheel.



F7406A



339C21



0098FF

Complementary

The Complementary color scheme is a pair of colors which are on the opposite of each other on the color wheel.



F7406A



40F7CD

Split Complementary

Split-complementary colors differ from the complementary color scheme. The scheme consists of three colors, the original color and two neighbors of the complement color.



00A2E1



F7406A



00A265

Square

The Square scheme is like the rectangle color scheme, but the four colors are evenly spaced on the color wheel.



F7406A



858F00



00A4A8



2684FF

Rectangle

The Rectangle color scheme consists of four colors that form a rectangle on the color wheel.



F7406A



CC7000



00A4A8



009CFC

Sweetspot

The Sweet Spot groups the original color and five complimentary colors.



F7406A



FFC7D4



CC40F7



805E66



000000



808080

Same Dimension

The Same Dimension uses a secret algorithm to generate beautiful new colors.



F7406A



FF1C50



F77140



7A6E71



BA002B



3B000D

Inverse Universe

The Inverse Universe completely reimagines the original color for something new.



F7406A



FF1C50



40C6F7



7A6E71



BA002B



3B000D

Previews

White Background



This preview shows how the Hex color F7406A looks on a white background.

Color Contrast Check

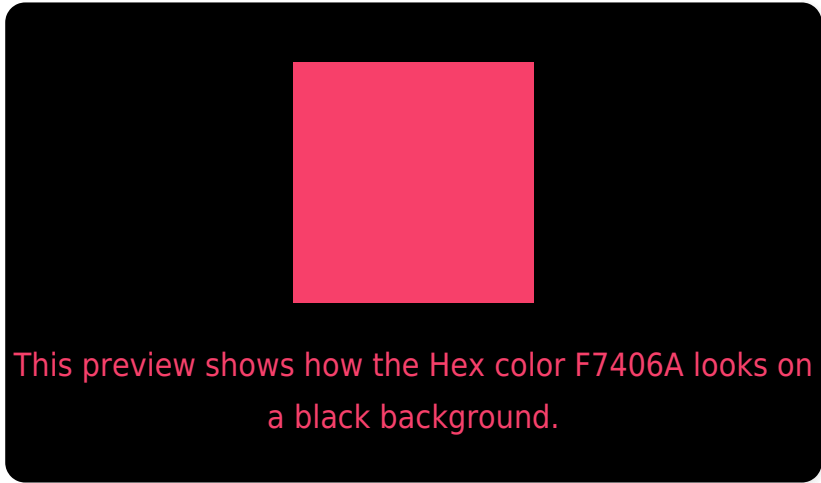
Large Text (above 18pt) WCAG AA ✓ Pass

Any Text WCAG AA × Fail

Large Text (above 18pt) WCAG AAA × Fail

Any Text WCAG AAA × Fail

Black Background



Color Contrast Check

Large Text (above 18pt) WCAG AA ✓ Pass

Any Text WCAG AA ✓ Pass

Large Text (above 18pt) WCAG AAA ✓ Pass

Any Text WCAG AAA × Fail

If you want to check with other color combinations, try the [Color Contrast Checker](#).

Hex F7406A Background



This preview shows how black text looks on a background with the Hex color F7406A.

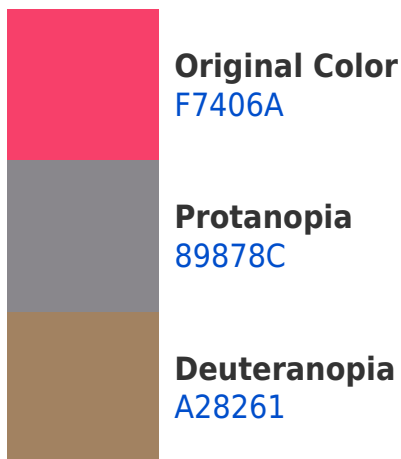


This preview shows how white text looks on a background with the Hex color F7406A.

Color Blindness Simulation

Color vision deficiency is a very complex topic, and I could not describe the different causes any better than Wikipedia does, so if you want to learn more, you should check out their [article about color blindness](#).

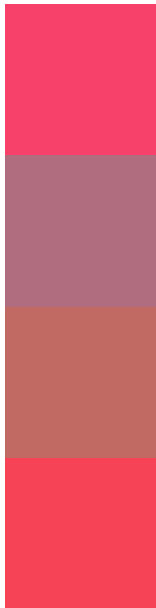
Dichromacy





Tritanopia
F5474A

Trichromacy



Original Color
F7406A

Protanomaly
B16D80

Deuteranomaly
C16A64

Tritanomaly
F64456

Monochromacy



Original Color
F7406A

Achromatopsia
7C7C7C

Achromatomaly
A96675

CSS Examples

Text

The CSS property to change the color of the text to Hex F7406A is called "color". The color property can be set on classes, ids or directly on the HTML element.

This example shows how text in the color #F7406A looks like.

```
.text, #text, p{  
    color:#F7406A  
}
```

If you want to add a text shadow in that color use the text-shadow property, you can generate a text shadow directly with our [CSS Text Shadow Generator](#).

Here you see how black text with a 4 pixel #F7406A colored shadow looks like.

```
.shadow{ text-shadow: 4px 4px 2px #F7406A
}
```

Border

The CSS property to change the border of an element to Hex F7406A is called "border". The border property can be set on classes, ids or directly on the HTML element.

This example shows the color as border, it can be applied via the CSS property "border" or "border-color".

```
.border, #border, table{ border:4px solid
#F7406A }
```

If only the border color should be changed use the property `border-color`.

```
.border{ border-color:#F7406A }
```

If you want to add a box shadow in that color use:

Here you see how a box with a 4 pixel #F7406A colored shadow looks like.

```
.boxshadow{ -moz-box-shadow:4px 4px 4px  
4px #F7406A; -webkit-box-shadow:4px 4px  
4px 4px #F7406A; box-shadow:4px 4px 4px  
4px #F7406A }
```

Background

The CSS property to change the background color of an element to Hex F7406A is called "background". The background property can be set on classes, ids or directly on the HTML element.

```
.background, #background, body{  
background:#F7406A }
```

If only the background color should be changed can be used:

```
.background{ background-color:#F7406A }
```

This example shows the color as background, it is applied via the CSS property "background".

To optimize and compress your CSS code, you can use our [online CSS compressor and optimizer](#) based on csstidy. If you want to create a linear or radial gradient as background or border, check our [CSS Gradient Generator](#).

Hey! You found this booklet interesting? Support Converting Colors with the new Membership Option!

The pro membership hides all ads, plus gives you double the colors in the color bucket, and more awesome pro features!

[Learn more, Memberships starting at \\$2.50/m!](#)

**Follow me
on Twitter!**

@ConvertingColor