

Converting Colors

Hex(F74C7C)

Have a look what the booklet for
Hex(F74C7C) contains.

Hex(F74C7C)	3
<i>Conversions</i>	4
<i>Details</i>	6
<i>Harmonies</i>	11
<i>Previews</i>	23
<i>Color Blindness Simulation</i>	26
<i>CSS Examples</i>	29

Color

Hex(F74C7C)

Conversions

Conversions Part 1

Format	Color
Hex	F74C7C
RGB	247, 76, 124
RGB Percent	97%, 30%, 49%
CMY	0.0314, 0.7020, 0.5137
CMYK	0.00, 0.69, 0.50, 0.03
HSL	343°, 91%, 63%
HSV	343°, 69%, 97%
XYZ	44.5803, 26.3983, 21.8145
YIQ	132.6010, 86.5080, 51.1800

Conversions

Conversions Part 2

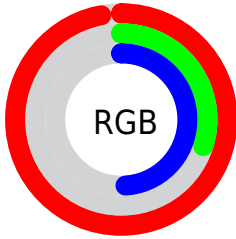
Format	Color
RYB	247, 76, 124
Decimal	16206972
CIELab	58.41, 67.74, 11.27
CIELCh	58, 68.667, 9.446
Yxy	26.3983, 0.4804, 0.2845
Android (android.graphics.Color)	4294397052 (0xFFFF74C7C)
YUV	132.6010, -4.2403, 100.3279
Hunter-Lab	51.3793, 64.9656, 10.7922

Details

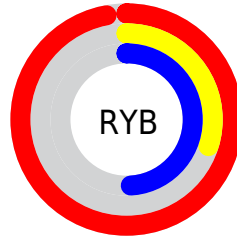
The Hex color **F74C7C** is a dark color, and the websafe version is hex **FF6699**. The color can be described as middle washed rose. A complement of this color would be **4CF7C7**, and the grayscale version is **858585**.

A 20% lighter version of the original color is **FF87B0**, and **B9004C** is the 20% darker color. If you saturate the color by 10%, you get **F7336A**, and if you desaturate by 10%, it is **F7658E**.

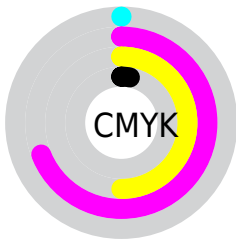
Distribution



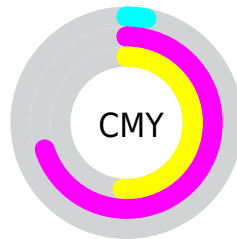
- Red (97%)
- Green (30%)
- Blue (49%)



- Red (97%)
- Yellow (30%)
- Blue (49%)



- Cyan (0%)
- Magenta (69%)
- Yellow (50%)
- Black (3%)



- Cyan (3%)
- Magenta (70%)
- Yellow (51%)

Brightness & Saturation Gradients

These gradients show how the Hex color F74C7C changes by changing the brightness by 10 percent. The first figure shows a shift by +10% for each color and the second figure -10%.

Similar to the brightness gradients but the following saturation gradients show a change of the Hex color F74C7C by changing the saturation by 10% instead.

 F74C7C

 F74C7C

FFFFFF

 D82A63

 FF87B0

 B9004C

 FFA4CC

 9A0035

 FFC1E8

 7C0021

 FFDFFF

 5E0009

 FFFDFD

 420003

 200001

 000000

 F74C7C

 F74C7C

 F7336A

 F7658E

 F71B58

 F77DA0

 F70247

 F796B1

 F70045

 F7AFC3

 F7C7D5

 F7E0E7

 F7F9F8

 F7FFFF

Harmonies

Analogous

The Analogous color harmony consists of three colors that are next to each other on the color wheel.



E257B8



F74C7C



EC5F43

Triad

The Triadic color harmony groups three colors that are evenly spaced from another and form a triangle on the color wheel.



F74C7C



549E23



009EFD

Complementary

The Complementary color scheme is a pair of colors which are on the opposite of each other on the color wheel.



F74C7C



4CF7C7

Split Complementary

Split-complementary colors differ from the complementary color scheme. The scheme consists of three colors, the original color and two neighbors of the complement color.



00A6D8



F74C7C



00A560

Square

The Square scheme is like the rectangle color scheme, but the four colors are evenly spaced on the color wheel.



F74C7C



979000



00A89E



008DFF

Rectangle

The Rectangle color scheme consists of four colors that form a rectangle on the color wheel.



F74C7C



D7711E



00A89E



00A2F4

Sweetspot

The Sweet Spot groups the original color and five complimentary colors.



F74C7C



FFC9D8



C74CF7



806069



000000



808080

Same Dimension

The Same Dimension uses a secret algorithm to generate beautiful new colors.



F74C7C



FF2B67



F7714C



7A6E72



BA0034



3B0010

Inverse Universe

The Inverse Universe completely reimagines the original color for something new.



F74C7C



FF2B67



4CD2F7



7A6E72



BA0034



3B0010

Previews

White Background



This preview shows how the Hex color F74C7C looks on a white background.

Color Contrast Check

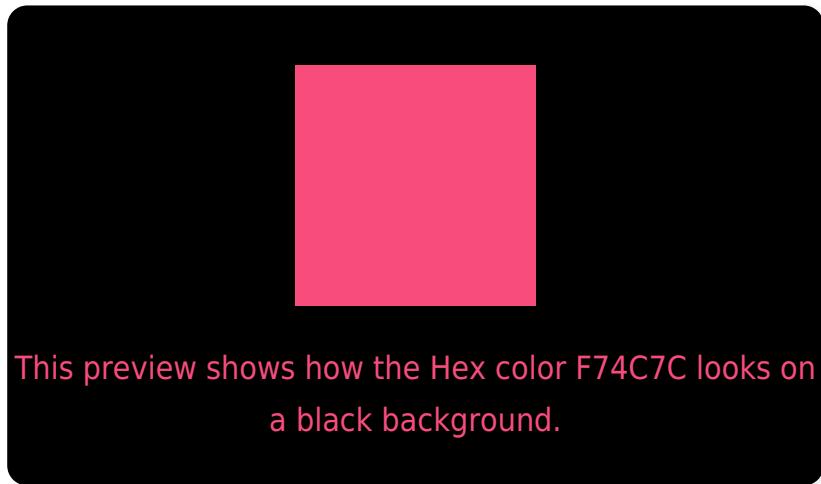
Large Text (above 18pt) WCAG AA ✓ Pass

Any Text WCAG AA × Fail

Large Text (above 18pt) WCAG AAA × Fail

Any Text WCAG AAA × Fail

Black Background



Color Contrast Check

Large Text (above 18pt) WCAG AA ✓ Pass

Any Text WCAG AA ✓ Pass

Large Text (above 18pt) WCAG AAA ✓ Pass

Any Text WCAG AAA × Fail

If you want to check with other color combinations, try the [Color Contrast Checker](#).

Hex F74C7C Background



This preview shows how black text looks on a background with the Hex color F74C7C.



This preview shows how white text looks on a background with the Hex color F74C7C.

Color Blindness Simulation

Color vision deficiency is a very complex topic, and I could not describe the different causes any better than Wikipedia does, so if you want to learn more, you should check out their [article about color blindness](#).


Dichromacy



Original Color
F74C7C

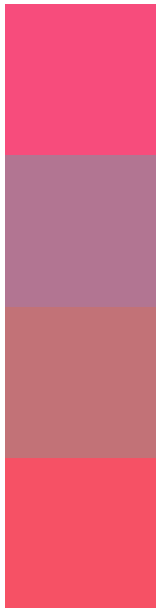
Protanopia
8A8C9E

Deuteranopia
A38774



Tritanopia
F55458

Trichromacy



Original Color
F74C7C

Protanomaly
B27592

Deuteranomaly
C27277

Tritanomaly
F65165

Monochromacy



Original Color
F74C7C

Achromatopsia
858585

Achromatomaly
AE7082

CSS Examples

Text

The CSS property to change the color of the text to Hex F74C7C is called "color". The color property can be set on classes, ids or directly on the HTML element.

This example shows how text in the color #F74C7C looks like.

```
.text, #text, p{  
    color:#F74C7C  
}
```

If you want to add a text shadow in that color use the text-shadow property, you can generate a text shadow directly with our [CSS Text Shadow Generator](#).

Here you see how black text with a 4 pixel #F74C7C colored shadow looks like.

```
.shadow{ text-shadow: 4px 4px 2px #F74C7C
}
```

Border

The CSS property to change the border of an element to Hex F74C7C is called "border". The border property can be set on classes, ids or directly on the HTML element.

This example shows the color as border, it can be applied via the CSS property "border" or "border-color".

```
.border, #border, table{ border:4px solid
#F74C7C }
```

If only the border color should be changed use the property `border-color`.

```
.border{ border-color:#F74C7C }
```

If you want to add a box shadow in that color use:

Here you see how a box with a 4 pixel #F74C7C colored shadow looks like.

```
.boxshadow{ -moz-box-shadow:4px 4px 4px  
4px #F74C7C; -webkit-box-shadow:4px 4px  
4px 4px #F74C7C; box-shadow:4px 4px 4px  
4px #F74C7C }
```

Background

The CSS property to change the background color of an element to Hex F74C7C is called "background". The background property can be set on classes, ids or directly on the HTML element.

```
.background, #background, body{  
background:#F74C7C }
```

If only the background color should be changed can be used:

```
.background{ background-color:#F74C7C }
```

This example shows the color as background, it is applied via the CSS property "background".

To optimize and compress your CSS code, you can use our [online CSS compressor and optimizer](#) based on csstidy. If you want to create a linear or radial gradient as background or border, check our [CSS Gradient Generator](#).

Hey! You found this booklet interesting? Support Converting Colors with the new Membership Option!

The pro membership hides all ads, plus gives you double the colors in the color bucket, and more awesome pro features!

[Learn more, Memberships starting at \\$2.50/m!](#)

**Follow me
on Twitter!**

@ConvertingColor