

Converting Colors

Hex(F74D6F)

Have a look what the booklet for
Hex(F74D6F) contains.

| | |
|--|----|
| Hex(F74D6F) | 3 |
| <i>Conversions</i> | 4 |
| <i>Details</i> | 6 |
| <i>Harmonies</i> | 11 |
| <i>Previews</i> | 23 |
| <i>Color Blindness Simulation</i> | 26 |
| <i>CSS Examples</i> | 29 |

Color

Hex(F74D6F)

Conversions

Conversions Part 1

| Format | Color |
|-------------|----------------------------|
| Hex | F74D6F |
| RGB | 247, 77, 111 |
| RGB Percent | 97%, 30%, 44% |
| CMY | 0.0314, 0.6980, 0.5647 |
| CMYK | 0.00, 0.69, 0.55, 0.03 |
| HSL | 348°, 91%, 64% |
| HSV | 348°, 69%, 97% |
| XYZ | 43.8809, 26.2296, 17.7890 |
| YIQ | 131.7060, 90.4060, 46.6140 |

Conversions

Conversions Part 2

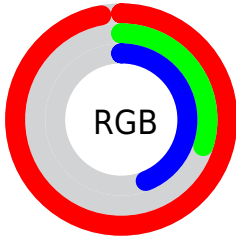
| Format | Color |
|-------------------------------------|---------------------------------|
| RYB | 247, 77, 111 |
| Decimal | 16207215 |
| CIELab | 58.25, 66.38, 18.69 |
| CIELCh | 58, 68.959, 15.725 |
| Yxy | 26.2296, 0.4992, 0.2984 |
| Android (android.graphics.Color) | 4294397295 (0xFFFF74D6F) |
| YUV | 131.7060, -10.2081, 101.1128 |
| Hunter-Lab | 51.2148, 63.3128, 15.2566 |

Details

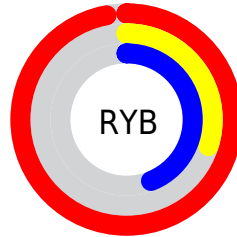
The Hex color **F74D6F** is a dark color, and the websafe version is hex **FF3366**. The color can be described as middle washed rose. A complement of this color would be **4DF7D5**, and the grayscale version is **848484**.

A 20% lighter version of the original color is **FF88A2**, and **B80040** is the 20% darker color. If you saturate the color by 10%, you get **F7345B**, and if you desaturate by 10%, it is **F76683**.

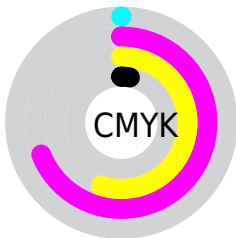
Distribution



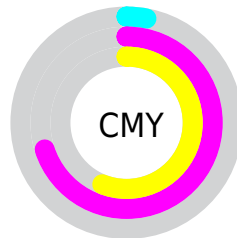
- Red (97%)
- Green (30%)
- Blue (44%)



- Red (97%)
- Yellow (30%)
- Blue (44%)



- Cyan (0%)
- Magenta (69%)
- Yellow (55%)
- Black (3%)



- Cyan (3%)
- Magenta (70%)
- Yellow (56%)

Brightness & Saturation Gradients

These gradients show how the Hex color F74D6F changes by changing the brightness by 10 percent. The first figure shows a shift by +10% for each color and the second figure -10%.

Similar to the brightness gradients but the following saturation gradients show a change of the Hex color F74D6F by changing the saturation by 10% instead.

 F74D6F

 F74D6F

FFFFFF

 D72C57

 FF88A2

 B80040

 FFA5BD

 99002A

 FFC2D9

 7B0017

 FFDFF5

 5D0001

 FFFDF5

 400003

 1D0001

 000000

 F74D6F

 F74D6F

 F7345B

 F76683

 F71C47

 F77E97

 F70334

 F797AA

 F70031

 F7B0BE

 F7C9D2

 F7E1E6

 F7FAF9

 F7FFFF

Harmonies

Analogous

The Analogous color harmony consists of three colors that are next to each other on the color wheel.



E951AB



F74D6F



E66437

Triad

The Triadic color harmony groups three colors that are evenly spaced from another and form a triangle on the color wheel.



F74D6F



409F2F



009BFF

Complementary

The Complementary color scheme is a pair of colors which are on the opposite of each other on the color wheel.



F74D6F



4DF7D5

Split Complementary

Split-complementary colors differ from the complementary color scheme. The scheme consists of three colors, the original color and two neighbors of the complement color.



00A5E2



F74D6F



00A66C

Square

The Square scheme is like the rectangle color scheme, but the four colors are evenly spaced on the color wheel.



F74D6F



8A9300



00A8AB



4388FF

Rectangle

The Rectangle color scheme consists of four colors that form a rectangle on the color wheel.



F74D6F



CE760E



00A8AB



009FFA

Sweetspot

The Sweet Spot groups the original color and five complimentary colors.



F74D6F



FFC9D4



D54DF7



806066



000000



808080

Same Dimension

The Same Dimension uses a secret algorithm to generate beautiful new colors.



F74D6F



FF2B56



F7804D



7A6E71



BA0025



3B000C

Inverse Universe

The Inverse Universe completely reimagines the original color for something new.



F74D6F



FF2B56



4DC4F7



7A6E71



BA0025



3B000C

Previews

White Background



This preview shows how the Hex color F74D6F looks on a white background.

Color Contrast Check

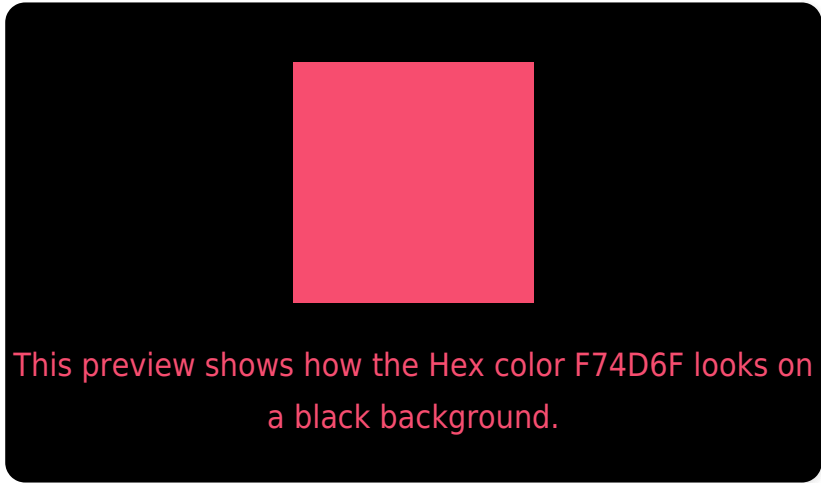
Large Text (above 18pt) WCAG AA ✓ Pass

Any Text WCAG AA × Fail

Large Text (above 18pt) WCAG AAA × Fail

Any Text WCAG AAA × Fail

Black Background



Color Contrast Check

Large Text (above 18pt) WCAG AA ✓ Pass

Any Text WCAG AA ✓ Pass

Large Text (above 18pt) WCAG AAA ✓ Pass

Any Text WCAG AAA × Fail

If you want to check with other color combinations, try the [Color Contrast Checker](#).

Hex F74D6F Background



This preview shows how black text looks on a background with the Hex color F74D6F.




This preview shows how white text looks on a background with the Hex color F74D6F.

Color Blindness Simulation

Color vision deficiency is a very complex topic, and I could not describe the different causes any better than Wikipedia does, so if you want to learn more, you should check out their [article about color blindness](#).

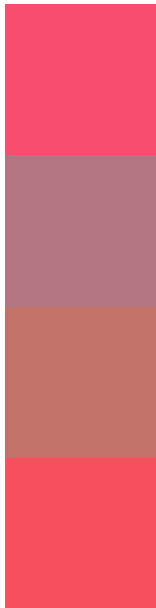
Dichromacy





Tritanopia
F65256

Trichromacy



Original Color
F74D6F

Protanomaly
B47583

Deuteranomaly
C3726A

Tritanomaly
F6505F

Monochromacy



Original Color
F74D6F

Achromatopsia
848484

Achromatomaly
AE707C

CSS Examples

Text

The CSS property to change the color of the text to Hex F74D6F is called "color". The color property can be set on classes, ids or directly on the HTML element.

This example shows how text in the color #F74D6F looks like.

```
.text, #text, p{  
    color:#F74D6F  
}
```

If you want to add a text shadow in that color use the text-shadow property, you can generate a text shadow directly with our [CSS Text Shadow Generator](#).

Here you see how black text with a 4 pixel #F74D6F colored shadow looks like.

```
.shadow{ text-shadow: 4px 4px 2px #F74D6F
}
```

Border

The CSS property to change the border of an element to Hex F74D6F is called "border". The border property can be set on classes, ids or directly on the HTML element.

This example shows the color as border, it can be applied via the CSS property "border" or "border-color".

```
.border, #border, table{ border:4px solid
#F74D6F }
```

If only the border color should be changed use the property `border-color`.

```
.border{ border-color:#F74D6F }
```

If you want to add a box shadow in that color use:

Here you see how a box with a 4 pixel #F74D6F colored shadow looks like.

```
.boxshadow{ -moz-box-shadow:4px 4px 4px  
4px #F74D6F; -webkit-box-shadow:4px 4px  
4px 4px #F74D6F; box-shadow:4px 4px 4px  
4px #F74D6F }
```

Background

The CSS property to change the background color of an element to Hex F74D6F is called "background". The background property can be set on classes, ids or directly on the HTML element.

```
.background, #background, body{  
background:#F74D6F }
```

If only the background color should be changed can be used:

```
.background{ background-color:#F74D6F }
```

This example shows the color as background, it is applied via the CSS property "background".

To optimize and compress your CSS code, you can use our [online CSS compressor and optimizer](#) based on csstidy. If you want to create a linear or radial gradient as background or border, check our [CSS Gradient Generator](#).

Hey! You found this booklet interesting? Support Converting Colors with the new Membership Option!

The pro membership hides all ads, plus gives you double the colors in the color bucket, and more awesome pro features!

[Learn more, Memberships starting at \\$2.50/m!](#)

**Follow me
on Twitter!**

@ConvertingColor