

# Converting Colors

Hex(F75585)

Have a look what the booklet for  
Hex(F75585) contains.

<b>Hex(F75585)</b> .....	3
<b><i>Conversions</i></b> .....	4
<b><i>Details</i></b> .....	6
<b><i>Harmonies</i></b> .....	11
<b><i>Previews</i></b> .....	23
<b><i>Color Blindness Simulation</i></b> .....	26
<b><i>CSS Examples</i></b> .....	29

# **Color**

**Hex(F75585)**

# Conversions

## Conversions Part 1

Format	Color
Hex	F75585
RGB	247, 85, 133
RGB Percent	97%, 33%, 52%
CMY	0.0314, 0.6667, 0.4784
CMYK	0.00, 0.66, 0.46, 0.03
HSL	342°, 91%, 65%
HSV	342°, 66%, 97%
XYZ	45.8399, 27.9646, 25.1720
YIQ	138.9100, 81.1440, 49.2720

# Conversions

## Conversions Part 2

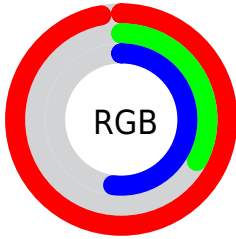
<b>Format</b>	<b>Color</b>
<a href="#">RYB</a>	<a href="#">247, 85, 133</a>
Decimal	<a href="#">16209285</a>
<a href="#">CIELab</a>	<a href="#">59.86, 65.14, 8.04</a>
<a href="#">CIElCh</a>	<a href="#">60, 65.633, 7.036</a>
<a href="#">Yxy</a>	<a href="#">27.9646, 0.4631, 0.2825</a>
<a href="#">Android (android.graphics.Color)</a>	<a href="#">4294399365 (0xFFFF75585)</a>
<a href="#">YUV</a>	<a href="#">138.9100, -2.9136, 94.7949</a>
<a href="#">Hunter-Lab</a>	<a href="#">52.8816, 62.1883, 8.7947</a>

# Details

The Hex color **F75585** is a light color, and the websafe version is hex **FF6699**. The color can be described as light muted rose. A complement of this color would be **55F7C7**, and the grayscale version is **8B8B8B**.

A 20% lighter version of the original color is **FF8FBA**, and **B90854** is the 20% darker color. If you saturate the color by 10%, you get **F73C74**, and if you desaturate by 10%, it is **F76E96**.

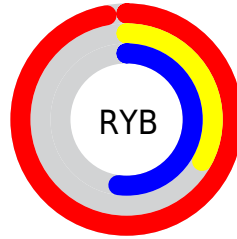
# Distribution



Red (97%)

Green (33%)

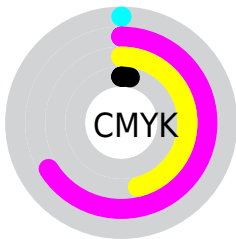
Blue (52%)



Red (97%)

Yellow (33%)

Blue (52%)

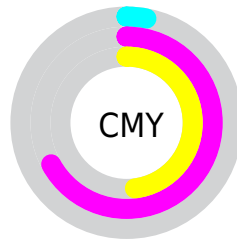


Cyan (0%)

Magenta (66%)

Yellow (46%)

Black (3%)



Cyan (3%)

Magenta (67%)

Yellow (48%)

# Brightness & Saturation Gradients

These gradients show how the Hex color F75585 changes by changing the brightness by 10 percent. The first figure shows a shift by +10% for each color and the second figure -10%.

Similar to the brightness gradients but the following saturation gradients show a change of the Hex color F75585 by changing the saturation by 10% instead.



 F75585

 F75585

FFFFFF

 D8366C

 FF8FBA

 B90854

 FFACD6

 9B003D

 FFC9F2

 7D0028

 FFE6FF

 5F0013

 440003

 230001

 000000

 F75585

 F75585

 F73C74

 F76E96

 F72462

 F786A8

 F70B51

 F79FB9

 F70049

 F7B8CB

 F7D1DC

 F7E9ED

 F7FFFF

# Harmonies

## Analogous

The Analogous color harmony consists of three colors that are next to each other on the color wheel.



E060BE



F75585



EF644E

# Triad

The Triadic color harmony groups three colors that are evenly spaced from another and form a triangle on the color wheel.



F75585



62A029



00A2FB

# Complementary

The Complementary color scheme is a pair of colors which are on the opposite of each other on the color wheel.



F75585



55F7C7

# Split Complementary

Split-complementary colors differ from the complementary color scheme. The scheme consists of three colors, the original color and two neighbors of the complement color.



00AAD5



F75585



00A861

# Square

The Square scheme is like the rectangle color scheme, but the four colors are evenly spaced on the color wheel.



F75585



A09200



00AB9D



0093FF

# Rectangle

The Rectangle color scheme consists of four colors that form a rectangle on the color wheel.



F75585



DC742C



00AB9D



00A6F1



# Sweetspot

The Sweet Spot groups the original color and five complimentary colors.



F75585



FFCCDB



C655F7



80616A



000000



808080



# Same Dimension

The Same Dimension uses a secret algorithm to generate beautiful new colors.



F75585



FF3671



F77555



7A6E72



BA0037



3B0011



# Inverse Universe

The Inverse Universe completely reimagines the original color for something new.



F75585



FF3671



55D7F7



7A6E72



BA0037



3B0011



# Previews

## White Background



This preview shows how the Hex color F7585E looks on a white background.

## Color Contrast Check

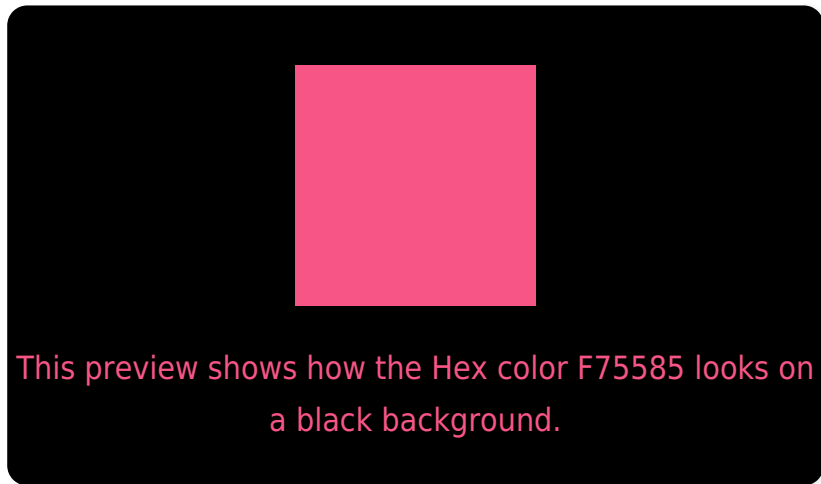
Large Text (above 18pt) WCAG AA ✓ Pass

Any Text WCAG AA ✗ Fail

Large Text (above 18pt) WCAG AAA ✗ Fail

Any Text WCAG AAA ✗ Fail

# Black Background



## Color Contrast Check

Large Text (above 18pt) WCAG AA ✓ Pass

Any Text WCAG AA ✓ Pass

Large Text (above 18pt) WCAG AAA ✓ Pass

Any Text WCAG AAA × Fail

If you want to check with other color combinations, try the [Color Contrast Checker](#).



## Hex F75585 Background



This preview shows how black text looks on a background with the Hex color F75585.



This preview shows how white text looks on a background with the Hex color F75585.

# Color Blindness Simulation

Color vision deficiency is a very complex topic, and I could not describe the different causes any better than Wikipedia does, so if you want to learn more, you should check out their [article about color blindness](#).

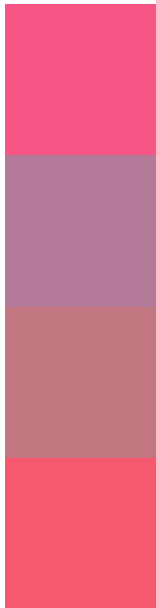
## Dichromacy





**Tritanopia**  
F55C62

# Trichromacy



**Original Color**  
F75585

**Protanomaly**  
B47A9A

**Deuteranomaly**  
C37780

**Tritanomaly**  
F6596F

# Monochromacy



**Original Color**  
F75585

**Achromatopsia**  
8B8B8B

**Achromatomaly**  
B27789

# CSS Examples

## Text

The CSS property to change the color of the text to Hex F75585 is called "color". The color property can be set on classes, ids or directly on the HTML element.

This example shows how text in the color #F75585 looks like.

```
.text, #text, p{  
    color:#F75585  
}
```

If you want to add a text shadow in that color use the text-shadow property, you can generate a text shadow directly with our [CSS Text Shadow Generator](#).

Here you see how black text with a 4 pixel #F75585 colored shadow looks like.

```
.shadow{ text-shadow: 4px 4px 2px #F75585
}
```

## Border

The CSS property to change the border of an element to Hex F75585 is called "border". The border property can be set on classes, ids or directly on the HTML element.

This example shows the color as border, it can be applied via the CSS property "border" or "border-color".

```
.border, #border, table{ border:4px solid
#F75585 }
```

If only the border color should be changed use the property `border-color`.

```
.border{ border-color:#F75585 }
```

If you want to add a box shadow in that color use:

Here you see how a box with a 4 pixel #F75585 colored shadow looks like.

```
.boxshadow{ -moz-box-shadow:4px 4px 4px  
4px #F75585; -webkit-box-shadow:4px 4px  
4px 4px #F75585; box-shadow:4px 4px 4px  
4px #F75585 }
```

# Background

The CSS property to change the background color of an element to Hex F75585 is called "background". The background property can be set on classes, ids or directly on the HTML element.

```
.background, #background, body{  
background:#F75585 }
```

If only the background color should be changed can be used:

```
.background{ background-color:#F75585 }
```

This example shows the color as background, it is applied via the CSS property "background".

To optimize and compress your CSS code, you can use our [online CSS compressor and optimizer](#) based on csstidy. If you want to create a linear or radial gradient as background or border, check our [CSS Gradient Generator](#).



Hey! You found this booklet interesting? Support Converting Colors with the new Membership Option!

The pro membership hides all ads, plus gives you double the colors in the color bucket, and more awesome pro features!

**[Learn more, Memberships starting at \\$2.50/m!](#)**

**Follow me  
on Twitter!**

@ConvertingColor