

Converting Colors

Hex(F75773)

Have a look what the booklet for
Hex(F75773) contains.

Hex(F75773)	3
<i>Conversions</i>	4
<i>Details</i>	6
<i>Harmonies</i>	11
<i>Previews</i>	23
<i>Color Blindness Simulation</i>	26
<i>CSS Examples</i>	29

Color

Hex(F75773)

Conversions

Conversions Part 1

Format	Color
Hex	F75773
RGB	247, 87, 115
RGB Percent	97%, 34%, 45%
CMY	0.0314, 0.6588, 0.5490
CMYK	0.00, 0.65, 0.53, 0.03
HSL	350°, 91%, 65%
HSV	350°, 65%, 97%
XYZ	44.8605, 27.8284, 19.2267
YIQ	138.0320, 86.3720, 42.6280

Conversions

Conversions Part 2

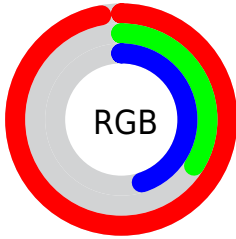
Format	Color
R _Y B	247, 87, 115
Decimal	16209779
CIE Lab	59.73, 62.86, 18.37
CIE LCh	60, 65.487, 16.291
Yxy	27.8284, 0.4881, 0.3028
Android (android.graphics.Color)	4294399859 (0xFFFF75773)
YUV	138.0320, -11.3548, 95.5649
Hunter-Lab	52.7526, 59.4783, 15.3175

Details

The Hex color **F75773** is a light color, and the websafe version is hex **FF6666**. The color can be described as light muted rose. A complement of this color would be **57F7DB**, and the grayscale version is **8A8A8A**.

A 20% lighter version of the original color is **FF90A7**, and **B91143** is the 20% darker color. If you saturate the color by 10%, you get **F73E5F**, and if you desaturate by 10%, it is **F77087**.

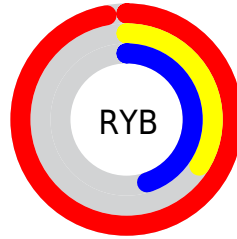
Distribution



Red (97%)

Green (34%)

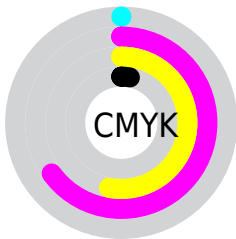
Blue (45%)



Red (97%)

Yellow (34%)

Blue (45%)

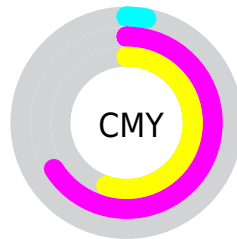


Cyan (0%)

Magenta (65%)

Yellow (53%)

Black (3%)



Cyan (3%)

Magenta (66%)

Yellow (55%)

Brightness & Saturation Gradients

These gradients show how the Hex color F75773 changes by changing the brightness by 10 percent. The first figure shows a shift by +10% for each color and the second figure -10%.

Similar to the brightness gradients but the following saturation gradients show a change of the Hex color F75773 by changing the saturation by 10% instead.

 F75773

 F75773

FFFFFF

 D8395B

 FF90A7

 B91143

 FFADC2

 9A002D

 FFCADE

 7C0019

 FFE7FA

 5E0000

 420003

 200001

 000000

 F75773

 F75773

 F73E5F

 F77087

 F7264A

 F7889C

 F70D36

 F7A1B0

 F7002B

 F7BAC5

 F7D3D9

 F7EBED

 F7FFFF

Harmonies

Analogous

The Analogous color harmony consists of three colors that are next to each other on the color wheel.



EA5AAD



F75773



E76B3E

Triad

The Triadic color harmony groups three colors that are evenly spaced from another and form a triangle on the color wheel.



F75773



49A33A



009EFF

Complementary

The Complementary color scheme is a pair of colors which are on the opposite of each other on the color wheel.



F75773



57F7DB

Split Complementary

Split-complementary colors differ from the complementary color scheme. The scheme consists of three colors, the original color and two neighbors of the complement color.



00A8E2



F75773



00A973

Square

The Square scheme is like the rectangle color scheme, but the four colors are evenly spaced on the color wheel.



F75773



8E9701



00ABAF



558CFF

Rectangle

The Rectangle color scheme consists of four colors that form a rectangle on the color wheel.



F75773



D07C1D



00ABAF



00A2F9

Sweetspot

The Sweet Spot groups the original color and five complimentary colors.



F75773



FFCFD7



DA57F7



806267



000000



808080

Same Dimension

The Same Dimension uses a secret algorithm to generate beautiful new colors.



F75773



FF385B



F78A57



7A6E70



BA0021



3B000A

Inverse Universe

The Inverse Universe completely reimagines the original color for something new.



F75773



FF385B



57C4F7



7A6E70



BA0021



3B000A

Previews

White Background



This preview shows how the Hex color F75773 looks on a white background.

Color Contrast Check

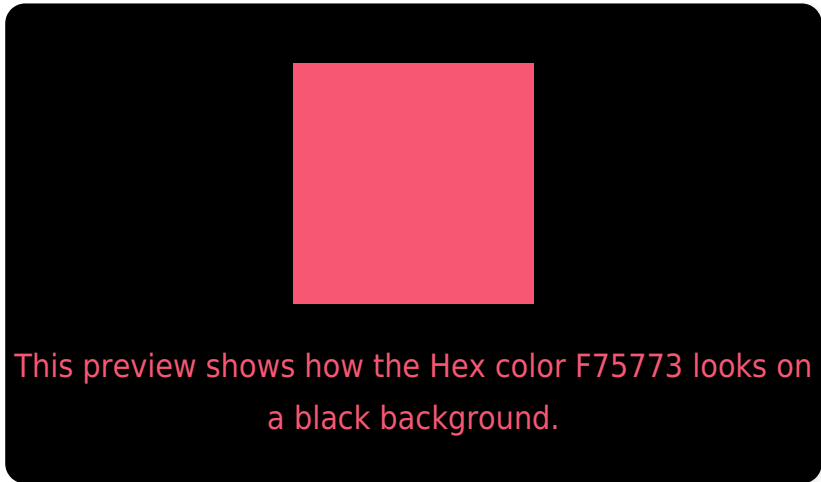
Large Text (above 18pt) WCAG AA ✓ Pass

Any Text WCAG AA × Fail

Large Text (above 18pt) WCAG AAA × Fail

Any Text WCAG AAA × Fail

Black Background



Color Contrast Check

Large Text (above 18pt) WCAG AA ✓ Pass

Any Text WCAG AA ✓ Pass

Large Text (above 18pt) WCAG AAA ✓ Pass

Any Text WCAG AAA × Fail

If you want to check with other color combinations, try the [Color Contrast Checker](#).

Hex F75773 Background



This preview shows how black text looks on a background with the Hex color F75773.

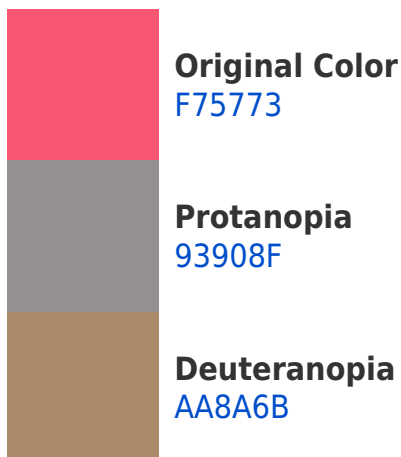


This preview shows how white text looks on a background with the Hex color F75773.

Color Blindness Simulation

Color vision deficiency is a very complex topic, and I could not describe the different causes any better than Wikipedia does, so if you want to learn more, you should check out their [article about color blindness](#).

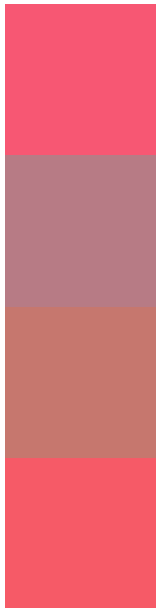
Dichromacy





Tritanopia
F65B60

Trichromacy



Original Color
F75773

Protanomaly
B77B85

Deuteranomaly
C6776E

Tritanomaly
F65A67

Monochromacy



Original Color
F75773

Achromatopsia
8A8A8A

Achromatomaly
B27782

CSS Examples

Text

The CSS property to change the color of the text to Hex F75773 is called "color". The color property can be set on classes, ids or directly on the HTML element.

This example shows how text in the color #F75773 looks like.

```
.text, #text, p{  
    color:#F75773  
}
```

If you want to add a text shadow in that color use the text-shadow property, you can generate a text shadow directly with our [CSS Text Shadow Generator](#).

Here you see how black text with a 4 pixel #F75773 colored shadow looks like.

```
.shadow{ text-shadow: 4px 4px 2px #F75773
}
```

Border

The CSS property to change the border of an element to Hex F75773 is called "border". The border property can be set on classes, ids or directly on the HTML element.

This example shows the color as border, it can be applied via the CSS property "border" or "border-color".

```
.border, #border, table{ border:4px solid
#F75773 }
```

If only the border color should be changed use the property `border-color`.

```
.border{ border-color:#F75773 }
```

If you want to add a box shadow in that color use:

Here you see how a box with a 4 pixel #F75773 colored shadow looks like.

```
.boxshadow{ -moz-box-shadow:4px 4px 4px  
4px #F75773; -webkit-box-shadow:4px 4px  
4px 4px #F75773; box-shadow:4px 4px 4px  
4px #F75773 }
```

Background

The CSS property to change the background color of an element to Hex F75773 is called "background". The background property can be set on classes, ids or directly on the HTML element.

```
.background, #background, body{  
background:#F75773 }
```

If only the background color should be changed can be used:

```
.background{ background-color:#F75773 }
```

This example shows the color as background, it is applied via the CSS property "background".

To optimize and compress your CSS code, you can use our [online CSS compressor and optimizer](#) based on csstidy. If you want to create a linear or radial gradient as background or border, check our [CSS Gradient Generator](#).

Hey! You found this booklet interesting? Support Converting Colors with the new Membership Option!

The pro membership hides all ads, plus gives you double the colors in the color bucket, and more awesome pro features!

[Learn more, Memberships starting at \\$2.50/m!](#)

**Follow me
on Twitter!**

@ConvertingColor