

# Converting Colors

Hex(F763CE)

Have a look what the booklet for  
Hex(F763CE) contains.

<b>Hex(F763CE)</b> .....	3
<b><i>Conversions</i></b> .....	4
<b><i>Details</i></b> .....	6
<b><i>Harmonies</i></b> .....	11
<b><i>Previews</i></b> .....	23
<b><i>Color Blindness Simulation</i></b> .....	26
<b><i>CSS Examples</i></b> .....	29

# **Color**

**Hex(F763CE)**

# Conversions

## Conversions Part 1

<b>Format</b>	<b>Color</b>
Hex	F763CE
RGB	247, 99, 206
RGB Percent	97%, 39%, 81%
CMY	0.0314, 0.6118, 0.1922
CMYK	0.00, 0.60, 0.17, 0.03
HSL	317°, 90%, 68%
HSV	317°, 60%, 97%
XYZ	53.9602, 33.1541, 61.9479
YIQ	155.4500, 53.8610, 64.6530

# Conversions

## Conversions Part 2

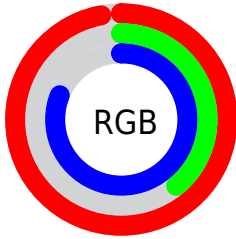
<b>Format</b>	<b>Color</b>
R <sub>YB</sub>	247, 99, 206
Decimal	16212942
CIE <sub>Lab</sub>	64.29, 67.96, -27.30
CIE <sub>LCh</sub>	64, 73.235, 338.113
Y <sub>xy</sub>	33.1541, 0.3620, 0.2224
Android (android.graphics.Color)	4294403022 (0xFFFF763CE)
YUV	155.4500, 24.9211, 80.2893
Hunter-Lab	57.5796, 66.5155, -23.4824

# Details

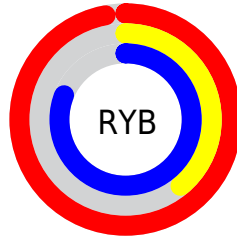
The Hex color **F763CE** is a light color, and the websafe version is hex **FF66CC**. A complement of this color would be **63F78C**, and the grayscale version is **9B9B9B**.

A 20% lighter version of the original color is **FF9DFF**, and **BB2397** is the 20% darker color. If you saturate the color by 10%, you get **F74AC7**, and if you desaturate by 10%, it is **F77CD5**.

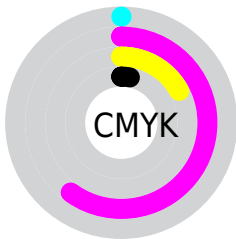
# Distribution



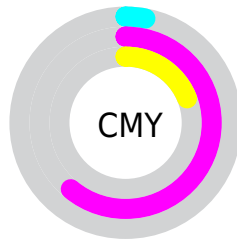
- Red (97%)
- Green (39%)
- Blue (81%)



- Red (97%)
- Yellow (39%)
- Blue (81%)



- Cyan (0%)
- Magenta (60%)
- Yellow (17%)
- Black (3%)



- Cyan (3%)
- Magenta (61%)
- Yellow (19%)

# Brightness & Saturation Gradients

These gradients show how the Hex color F763CE changes by changing the brightness by 10 percent. The first figure shows a shift by +10% for each color and the second figure -10%.

Similar to the brightness gradients but the following saturation gradients show a change of the Hex color F763CE by changing the saturation by 10% instead.



 F763CE

 F763CE

FFFFFF

 D945B2

 FF9DFF

 BB2397

 FFBAFF

 9E007D

 FFD7FF

 820064

 FFF5FF

 65004C

 4A0035

 2F001F

 000001

 000000

 F763CE

 F763CE

 F74AC7

 F77CD5

 F732C0

 F794DC

 F719B9

 F7ADE3

 F700B3

 F7C6E9

 F7DFF0

 F7F7F7

 F7FFFE

 F7FFFF

# Harmonies

## Analogous

The Analogous color harmony consists of three colors that are next to each other on the color wheel.



B482FF



F763CE



FF568D

# Triad

The Triadic color harmony groups three colors that are evenly spaced from another and form a triangle on the color wheel.



F763CE



AA9F00



00B8EB

# Complementary

The Complementary color scheme is a pair of colors which are on the opposite of each other on the color wheel.



F763CE



63F78C

# Split Complementary

Split-complementary colors differ from the complementary color scheme. The scheme consists of three colors, the original color and two neighbors of the complement color.



00BAAC



F763CE



63AE26

# Square

The Square scheme is like the rectangle color scheme, but the four colors are evenly spaced on the color wheel.



F763CE



E0870F



00B768



00B0FF

# Rectangle

The Rectangle color scheme consists of four colors that form a rectangle on the color wheel.



F763CE



FF6062



00B768



00B9D8



# Sweetspot

The Sweet Spot groups the original color and five complimentary colors.



F763CE



FFD1F2



8A63F7



806378



000000



808080



# Same Dimension

The Same Dimension uses a secret algorithm to generate beautiful new colors.



F763CE



FF47CC



F76386



7A6E77



BA0087



3B002A



# Inverse Universe

The Inverse Universe completely reimagines the original color for something new.



F763CE



FF47CC



63F7D4



7A6E77



BA0087



3B002A



# Previews

## White Background



This preview shows how the Hex color F763CE looks on a white background.

## Color Contrast Check

Large Text (above 18pt) WCAG AA × Fail

Any Text WCAG AA × Fail

Large Text (above 18pt) WCAG AAA × Fail

Any Text WCAG AAA × Fail

# Black Background



## Color Contrast Check

Large Text (above 18pt) WCAG AA ✓ Pass

Any Text WCAG AA ✓ Pass

Large Text (above 18pt) WCAG AAA ✓ Pass

Any Text WCAG AAA ✓ Pass

If you want to check with other color combinations, try the [Color Contrast Checker](#).



## Hex F763CE Background



This preview shows how black text looks on a background with the Hex color F763CE.



This preview shows how white text looks on a background with the Hex color F763CE.

# Color Blindness Simulation

Color vision deficiency is a very complex topic, and I could not describe the different causes any better than Wikipedia does, so if you want to learn more, you should check out their [article about color blindness](#).

## Dichromacy





**Tritanopia**  
EF777F

# Trichromacy



**Original Color**  
F763CE



**Protanomaly**  
A685E9



**Deuteranomaly**  
B985C8



**Tritanomaly**  
F2709C

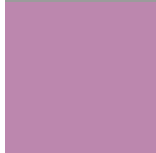
# Monochromacy



**Original Color**  
F763CE



**Achromatopsia**  
9B9B9B



**Achromatomaly**  
BC87AE

# CSS Examples

## Text

The CSS property to change the color of the text to Hex F763CE is called "color". The color property can be set on classes, ids or directly on the HTML element.

This example shows how text in the color #F763CE looks like.

```
.text, #text, p{  
    color:#F763CE  
}
```

If you want to add a text shadow in that color use the text-shadow property, you can generate a text shadow directly with our [CSS Text Shadow Generator](#).

Here you see how black text with a 4 pixel #F763CE colored shadow looks like.

```
.shadow{ text-shadow: 4px 4px 2px #F763CE
}
```

## Border

The CSS property to change the border of an element to Hex F763CE is called "border". The border property can be set on classes, ids or directly on the HTML element.

This example shows the color as border, it can be applied via the CSS property "border" or "border-color".

```
.border, #border, table{ border:4px solid
#F763CE }
```

If only the border color should be changed use the property border-color.

```
.border{ border-color:#F763CE }
```

If you want to add a box shadow in that color use:

Here you see how a box with a 4 pixel #F763CE colored shadow looks like.

```
.boxshadow{ -moz-box-shadow:4px 4px 4px  
4px #F763CE; -webkit-box-shadow:4px 4px  
4px 4px #F763CE; box-shadow:4px 4px 4px  
4px #F763CE }
```

# Background

The CSS property to change the background color of an element to Hex F763CE is called "background". The background property can be set on classes, ids or directly on the HTML element.

```
.background, #background, body{  
background:#F763CE }
```

If only the background color should be changed can be used:

```
.background{ background-color:#F763CE }
```

This example shows the color as background, it is applied via the CSS property "background".

To optimize and compress your CSS code, you can use our [online CSS compressor and optimizer](#) based on csstidy. If you want to create a linear or radial gradient as background or border, check our [CSS Gradient Generator](#).



Hey! You found this booklet interesting? Support Converting Colors with the new Membership Option!

The pro membership hides all ads, plus gives you double the colors in the color bucket, and more awesome pro features!

**[Learn more, Memberships starting at \\$2.50/m!](#)**

**Follow me  
on Twitter!**

@ConvertingColor