

Converting Colors

Hex(F76F86)

Have a look what the booklet for
Hex(F76F86) contains.

| | |
|--|----|
| Hex(F76F86) | 3 |
| <i>Conversions</i> | 4 |
| <i>Details</i> | 6 |
| <i>Harmonies</i> | 11 |
| <i>Previews</i> | 23 |
| <i>Color Blindness Simulation</i> | 26 |
| <i>CSS Examples</i> | 29 |

Color

Hex(F76F86)

Conversions

Conversions Part 1

| Format | Color |
|-------------|----------------------------|
| Hex | F76F86 |
| RGB | 247, 111, 134 |
| RGB Percent | 97%, 44%, 53% |
| CMY | 0.0314, 0.5647, 0.4745 |
| CMYK | 0.00, 0.55, 0.46, 0.03 |
| HSL | 350°, 89%, 70% |
| HSV | 350°, 55%, 97% |
| XYZ | 48.3453, 32.8643, 26.3496 |
| YIQ | 154.2860, 73.6730, 35.9850 |

Conversions

Conversions Part 2

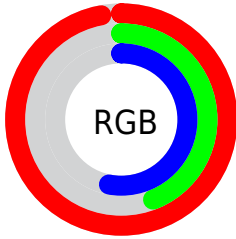
| Format | Color |
|-------------------------------------|---|
| RYB | 247, 111, 134 |
| Decimal | 16215942 |
| CIELab | 64.05, 54.08, 13.39 |
| CIElCh | 64, 55.710, 13.902 |
| Yxy | 32.8643, 0.4495, 0.3055 |
| Android (android.graphics.Color) | 4294406022 (0xFFFF76F86) |
| YUV | 154.2860, -10.0010, 81.3102 |
| Hunter-Lab | 57.3274, 50.2097, 12.8774 |

Details

The Hex color **F76F86** is a light color, and the websafe version is hex **FF6699**. A complement of this color would be **6FF7E0**, and the grayscale version is **9A9A9A**.

A 20% lighter version of the original color is **FFA7BB**, and **BA3755** is the 20% darker color. If you saturate the color by 10%, you get **F75671**, and if you desaturate by 10%, it is **F7889B**.

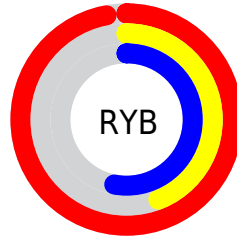
Distribution



Red (97%)

Green (44%)

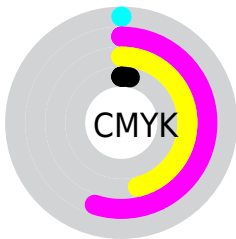
Blue (53%)



Red (97%)

Yellow (44%)

Blue (53%)

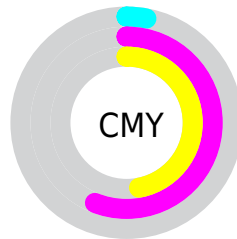


Cyan (0%)

Magenta (55%)

Yellow (46%)

Black (3%)



Cyan (3%)

Magenta (56%)

Yellow (47%)

Brightness & Saturation Gradients

These gradients show how the Hex color F76F86 changes by changing the brightness by 10 percent. The first figure shows a shift by +10% for each color and the second figure -10%.

Similar to the brightness gradients but the following saturation gradients show a change of the Hex color F76F86 by changing the saturation by 10% instead.

 F76F86

 F76F86

FFFFFF

 D8546D

 FFA7BB

 BA3755

 FFC3D7

 9C163E

 FFE0F3

 7F0028

 FFFDFF

 620014

 460001

 290001

 000000

 F76F86

 F76F86

 F75671

 F7889B

 F73E5D

 F7A0AF

 F72548

 F7B9C4

 F70C34

 F7D2D8

 F7002A

 F7EBED

 F7FFFF

Harmonies

Analogous

The Analogous color harmony consists of three colors that are next to each other on the color wheel.



E873B8



F76F86



EC7C58

Triad

The Triadic color harmony groups three colors that are evenly spaced from another and form a triangle on the color wheel.



F76F86



69AB50



00A8FA

Complementary

The Complementary color scheme is a pair of colors which are on the opposite of each other on the color wheel.



F76F86



6FF7E0

Split Complementary

Split-complementary colors differ from the complementary color scheme. The scheme consists of three colors, the original color and two neighbors of the complement color.



00B1DF



F76F86



00B27E

Square

The Square scheme is like the rectangle color scheme, but the four colors are evenly spaced on the color wheel.



F76F86



A0A033



00B4B2



6B99FC

Rectangle

The Rectangle color scheme consists of four colors that form a rectangle on the color wheel.



F76F86



D98941



00B4B2



00ACF4

Sweetspot

The Sweet Spot groups the original color and five complimentary colors.



F76F86



FFD4DB



DE6FF7



80666A



000000



808080

Same Dimension

The Same Dimension uses a secret algorithm to generate beautiful new colors.



F76F86



FF5773



F79A6F



7A6E70



BA001F



3B000A

Inverse Universe

The Inverse Universe completely reimagines the original color for something new.



F76F86



FF5773



6FCCF7



7A6E70



BA001F



3B000A

Previews

White Background



This preview shows how the Hex color F76F86 looks on a white background.

Color Contrast Check

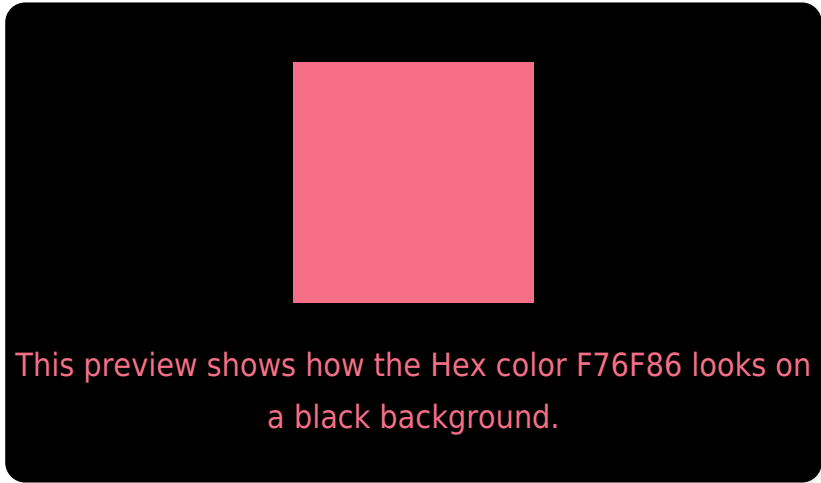
Large Text (above 18pt) WCAG AA × Fail

Any Text WCAG AA × Fail

Large Text (above 18pt) WCAG AAA × Fail

Any Text WCAG AAA × Fail

Black Background



Color Contrast Check

Large Text (above 18pt) WCAG AA ✓ Pass

Any Text WCAG AA ✓ Pass

Large Text (above 18pt) WCAG AAA ✓ Pass

Any Text WCAG AAA ✓ Pass

If you want to check with other color combinations, try the [Color Contrast Checker](#).

Hex F76F86 Background



This preview shows how black text looks on a background with the Hex color F76F86.

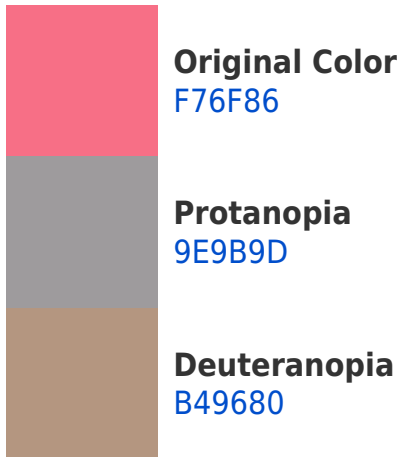


This preview shows how white text looks on a background with the Hex color F76F86.

Color Blindness Simulation

Color vision deficiency is a very complex topic, and I could not describe the different causes any better than Wikipedia does, so if you want to learn more, you should check out their [article about color blindness](#).

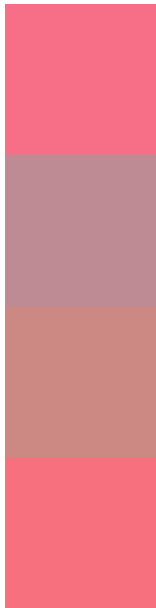
Dichromacy





Tritanopia
F67179

Trichromacy



Original Color
F76F86

Protanomaly
BE8B95

Deuteranomaly
CC8882

Tritanomaly
F6707E

Monochromacy



Original Color
F76F86

Achromatopsia
9A9A9A

Achromatomaly
BC8A93

CSS Examples

Text

The CSS property to change the color of the text to Hex F76F86 is called "color". The color property can be set on classes, ids or directly on the HTML element.

This example shows how text in the color #F76F86 looks like.

```
.text, #text, p{  
    color:#F76F86  
}
```

If you want to add a text shadow in that color use the text-shadow property, you can generate a text shadow directly with our [CSS Text Shadow Generator](#).

Here you see how black text with a 4 pixel #F76F86 colored shadow looks like.

```
.shadow{ text-shadow: 4px 4px 2px #F76F86
}
```

Border

The CSS property to change the border of an element to Hex F76F86 is called "border". The border property can be set on classes, ids or directly on the HTML element.

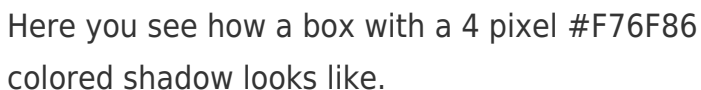
This example shows the color as border, it can be applied via the CSS property "border" or "border-color".

```
.border, #border, table{ border:4px solid
#F76F86 }
```

If only the border color should be changed use the property `border-color`.

```
.border{ border-color:#F76F86 }
```

If you want to add a box shadow in that color use:



Here you see how a box with a 4 pixel #F76F86 colored shadow looks like.

```
.boxshadow{ -moz-box-shadow:4px 4px 4px  
4px #F76F86; -webkit-box-shadow:4px 4px  
4px 4px #F76F86; box-shadow:4px 4px 4px  
4px #F76F86 }
```

Background

The CSS property to change the background color of an element to Hex F76F86 is called "background". The background property can be set on classes, ids or directly on the HTML element.

```
.background, #background, body{  
background:#F76F86 }
```

If only the background color should be changed can be used:

```
.background{ background-color:#F76F86 }
```

This example shows the color as background, it is applied via the CSS property "background".

To optimize and compress your CSS code, you can use our [online CSS compressor and optimizer](#) based on csstidy. If you want to create a linear or radial gradient as background or border, check our [CSS Gradient Generator](#).

Hey! You found this booklet interesting? Support Converting Colors with the new Membership Option!

The pro membership hides all ads, plus gives you double the colors in the color bucket, and more awesome pro features!

[Learn more, Memberships starting at \\$2.50/m!](#)

**Follow me
on Twitter!**

@ConvertingColor