

Converting Colors

Hex(F7786A)

Have a look what the booklet for
Hex(F7786A) contains.

Hex(F7786A)	3
<i>Conversions</i>	4
<i>Details</i>	6
<i>Harmonies</i>	11
<i>Previews</i>	23
<i>Color Blindness Simulation</i>	26
<i>CSS Examples</i>	29

Color

Hex(F7786A)

Conversions

Conversions Part 1

Format	Color
Hex	F7786A
RGB	247, 120, 106
RGB Percent	97%, 47%, 42%
CMY	0.0314, 0.5294, 0.5843
CMYK	0.00, 0.51, 0.57, 0.03
HSL	6°, 90%, 69%
HSV	6°, 57%, 97%
XYZ	47.6758, 34.2477, 17.7333
YIQ	156.3770, 80.1860, 22.5700

Conversions

Conversions Part 2

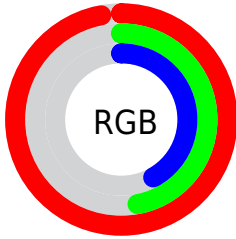
Format	Color
RYB	247, 122, 106
Decimal	16218218
CIELab	65.16, 47.45, 30.71
CIElCh	65, 56.521, 32.908
Yxy	34.2477, 0.4784, 0.3437
Android (android.graphics.Color)	4294408298 (0xFFFF7786A)
YUV	156.3770, -24.8359, 79.4764
Hunter-Lab	58.5215, 43.0060, 22.9989

Details

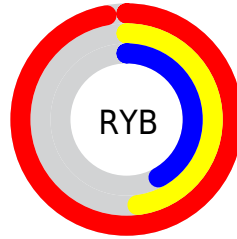
The Hex color **F7786A** is a light color, and the websafe version is hex **FF6666**. A complement of this color would be **6AE9F7**, and the grayscale version is **9D9D9D**.

A 20% lighter version of the original color is **FFAF9D**, and **B9433A** is the 20% darker color. If you saturate the color by 10%, you get **F76251**, and if you desaturate by 10%, it is **F78E83**.

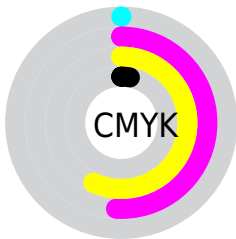
Distribution



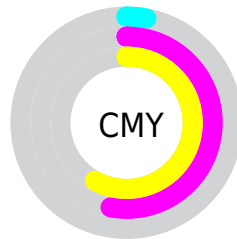
- Red (97%)
- Green (47%)
- Blue (42%)



- Red (97%)
- Yellow (48%)
- Blue (42%)



- Cyan (0%)
- Magenta (51%)
- Yellow (57%)
- Black (3%)



- Cyan (3%)
- Magenta (53%)
- Yellow (58%)

Brightness & Saturation Gradients

These gradients show how the Hex color F7786A changes by changing the brightness by 10 percent. The first figure shows a shift by +10% for each color and the second figure -10%.

Similar to the brightness gradients but the following saturation gradients show a change of the Hex color F7786A by changing the saturation by 10% instead.

 F7786A

 F7786A

FFFFFF

 D85D52

 FFAF9D

 B9433A

 FFCBB8

 9B2724

 FFE8D4

 7E0110

 FFFFF1

 600000

 430000

 280001

 000000

 F7786A

 F7786A

 F76251

 F78E83

 F74C39

 F7A49B

 F73520

 F7BBB4

 F71F07

 F7D1CD

 F71900

 F7E7E5

 F7FDFE

 F7FFFF

Harmonies

Analogous

The Analogous color harmony consists of three colors that are next to each other on the color wheel.



F9709B



F7786A



DE8B43

Triad

The Triadic color harmony groups three colors that are evenly spaced from another and form a triangle on the color wheel.



F7786A



34B36E



39A2FF

Complementary

The Complementary color scheme is a pair of colors which are on the opposite of each other on the color wheel.



F7786A



6AE9F7

Split Complementary

Split-complementary colors differ from the complementary color scheme. The scheme consists of three colors, the original color and two neighbors of the complement color.



00AFF8



F7786A



00B7A2

Square

The Square scheme is like the rectangle color scheme, but the four colors are evenly spaced on the color wheel.



F7786A



81AB44



00B6D4



A78FF3

Rectangle

The Rectangle color scheme consists of four colors that form a rectangle on the color wheel.



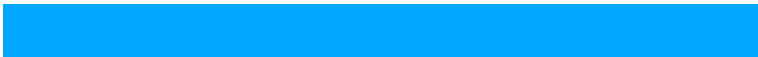
F7786A



C49734



00B6D4



00A7FF

Sweetspot

The Sweet Spot groups the original color and five complimentary colors.



F7786A



FFD8D4



F76AEB



806966



000000



808080

Same Dimension

The Same Dimension uses a secret algorithm to generate beautiful new colors.



F7786A



FF614F



F7BC6A



7A6F6E



BA1200



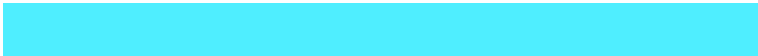
3B0600

Inverse Universe

The Inverse Universe completely reimagines the original color for something new.



6AE9F7



4FEEFF



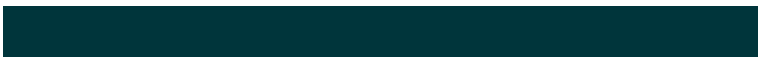
6AA5F7



6E797A



00A8BA



00353B

Previews

White Background



This preview shows how the Hex color F7786A looks on a white background.

Color Contrast Check

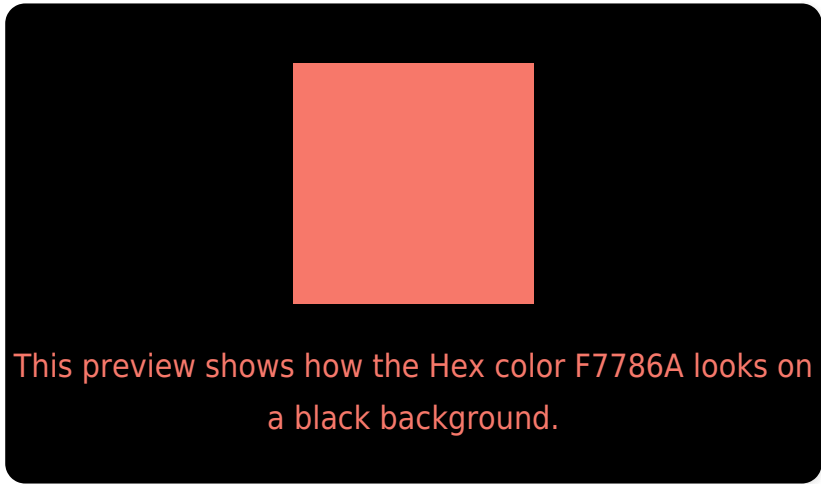
Large Text (above 18pt) WCAG AA × Fail

Any Text WCAG AA × Fail

Large Text (above 18pt) WCAG AAA × Fail

Any Text WCAG AAA × Fail

Black Background



Color Contrast Check

Large Text (above 18pt) WCAG AA ✓ Pass

Any Text WCAG AA ✓ Pass

Large Text (above 18pt) WCAG AAA ✓ Pass

Any Text WCAG AAA ✓ Pass

If you want to check with other color combinations, try the [Color Contrast Checker](#).

Hex F7786A Background



This preview shows how black text looks on a background with the Hex color F7786A.



This preview shows how white text looks on a background with the Hex color F7786A.

Color Blindness Simulation

Color vision deficiency is a very complex topic, and I could not describe the different causes any better than Wikipedia does, so if you want to learn more, you should check out their [article about color blindness](#).

Dichromacy



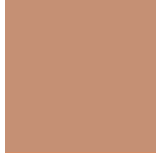


Tritanopia
F8757D

Trichromacy



Original Color
F7786A



Protanomaly
C59074



Deuteranomaly
D38C66

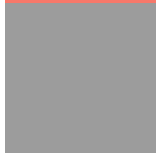


Tritanomaly
F87676

Monochromacy



Original Color
F7786A



Achromatopsia
9C9C9C



Achromatomaly
BD8F8A

CSS Examples

Text

The CSS property to change the color of the text to Hex F7786A is called "color". The color property can be set on classes, ids or directly on the HTML element.

This example shows how text in the color #F7786A looks like.

```
.text, #text, p{  
    color:#F7786A  
}
```

If you want to add a text shadow in that color use the text-shadow property, you can generate a text shadow directly with our [CSS Text Shadow Generator](#).

Here you see how black text with a 4 pixel #F7786A colored shadow looks like.

```
.shadow{ text-shadow: 4px 4px 2px #F7786A
}
```

Border

The CSS property to change the border of an element to Hex F7786A is called "border". The border property can be set on classes, ids or directly on the HTML element.

This example shows the color as border, it can be applied via the CSS property "border" or "border-color".

```
.border, #border, table{ border:4px solid
#F7786A }
```

If only the border color should be changed use the property `border-color`.

```
.border{ border-color:#F7786A }
```

If you want to add a box shadow in that color use:

Here you see how a box with a 4 pixel #F7786A colored shadow looks like.

```
.boxshadow{ -moz-box-shadow:4px 4px 4px  
4px #F7786A; -webkit-box-shadow:4px 4px  
4px 4px #F7786A; box-shadow:4px 4px 4px  
4px #F7786A }
```

Background

The CSS property to change the background color of an element to Hex F7786A is called "background". The background property can be set on classes, ids or directly on the HTML element.

```
.background, #background, body{  
background:#F7786A }
```

If only the background color should be changed can be used:

```
.background{ background-color:#F7786A }
```

This example shows the color as background, it is applied via the CSS property "background".

To optimize and compress your CSS code, you can use our [online CSS compressor and optimizer](#) based on csstidy. If you want to create a linear or radial gradient as background or border, check our [CSS Gradient Generator](#).

Hey! You found this booklet interesting? Support Converting Colors with the new Membership Option!

The pro membership hides all ads, plus gives you double the colors in the color bucket, and more awesome pro features!

[Learn more, Memberships starting at \\$2.50/m!](#)

**Follow me
on Twitter!**

@ConvertingColor