

Converting Colors

Hex(F7A696)

Have a look what the booklet for
Hex(F7A696) contains.

Hex(F7A696)	3
<i>Conversions</i>	4
<i>Details</i>	6
<i>Harmonies</i>	11
<i>Previews</i>	23
<i>Color Blindness Simulation</i>	26
<i>CSS Examples</i>	29

Color

Hex(F7A696)

Conversions

Conversions Part 1

Format	Color
Hex	F7A696
RGB	247, 166, 150
RGB Percent	97%, 65%, 59%
CMY	0.0314, 0.3490, 0.4118
CMYK	0.00, 0.33, 0.39, 0.03
HSL	10°, 86%, 78%
HSV	10°, 39%, 97%
XYZ	57.4990, 49.2486, 35.3296
YIQ	188.3950, 53.4120, 12.1960

Conversions

Conversions Part 2

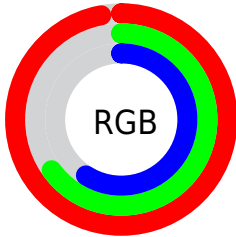
Format	Color
R _Y B	247, 169, 150
Decimal	16230038
CIE Lab	75.61, 28.02, 20.51
CIE LCh	76, 34.725, 36.200
Yxy	49.2486, 0.4047, 0.3466
Android (android.graphics.Color)	4294420118 (0xFFFF7A696)
YUV	188.3950, -18.9287, 51.3966
Hunter-Lab	70.1773, 23.4416, 19.2756

Details

The Hex color **F7A696** is a light color, and the websafe version is hex **FF9999**. A complement of this color would be **96E7F7**, and the grayscale version is **BDBDBD**.

A 20% lighter version of the original color is **FFDECC**, and **BC7163** is the 20% darker color. If you saturate the color by 10%, you get **F7917D**, and if you desaturate by 10%, it is **F7BBAF**.

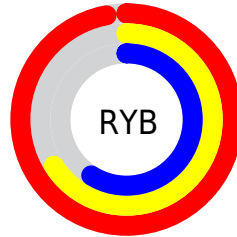
Distribution



Red (97%)

Green (65%)

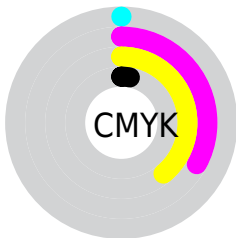
Blue (59%)



Red (97%)

Yellow (66%)

Blue (59%)

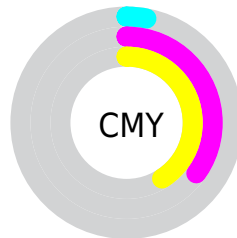


Cyan (0%)

Magenta (33%)

Yellow (39%)

Black (3%)



Cyan (3%)

Magenta (35%)

Yellow (41%)

Brightness & Saturation Gradients

These gradients show how the Hex color F7A696 changes by changing the brightness by 10 percent. The first figure shows a shift by +10% for each color and the second figure -10%.

Similar to the brightness gradients but the following saturation gradients show a change of the Hex color F7A696 by changing the saturation by 10% instead.

 F7A696

 F7A696

FFFFFF

 D98B7C

 FFDECC

 BC7163

 FFFAE8

 A0584B

 844034

 68281F

 4E1108

 340000

 140000

 000000

 F7A696

 F7A696

 F7917D

 F7BBAF

 F77D65

 F7CFC7

 F7684C

 F7E4E0

 F75333

 F7F9F9

 F73F1A

 F7FFFF

 F72A02

 F72900

Harmonies

Analogous

The Analogous color harmony consists of three colors that are next to each other on the color wheel.



F9A2B5



F7A696



E6B080

Triad

The Triadic color harmony groups three colors that are evenly spaced from another and form a triangle on the color wheel.



F7A696



81CA9F



99BBFA

Complementary

The Complementary color scheme is a pair of colors which are on the opposite of each other on the color wheel.



F7A696



96E7F7

Split Complementary

Split-complementary colors differ from the complementary color scheme. The scheme consists of three colors, the original color and two neighbors of the complement color.



69C5F4



F7A696



5DCCC0

Square

The Square scheme is like the rectangle color scheme, but the four colors are evenly spaced on the color wheel.



F7A696



A7C486



4DCADF



C7B0EE

Rectangle

The Rectangle color scheme consists of four colors that form a rectangle on the color wheel.



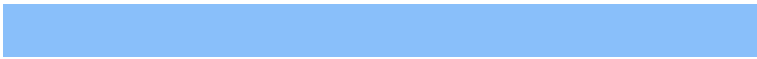
F7A696



D4B77A



4DCADF



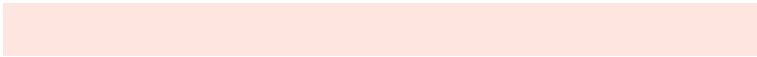
89BFFA

Sweetspot

The Sweet Spot groups the original color and five complimentary colors.



F7A696



FFE5E0



F796E8



80716E



000000



808080

Same Dimension

The Same Dimension uses a secret algorithm to generate beautiful new colors.



F7A696



FF9B87



F7D596



7A706E



BA1F00



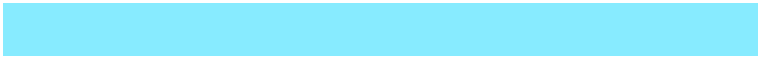
3B0A00

Inverse Universe

The Inverse Universe completely reimagines the original color for something new.



96E7F7



87EBFF



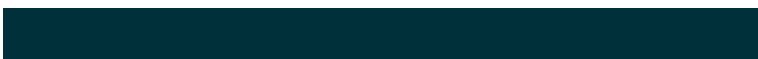
96B8F7



6E787A



009BBA



00313B

Previews

White Background



This preview shows how the Hex color F7A696 looks on a white background.

Color Contrast Check

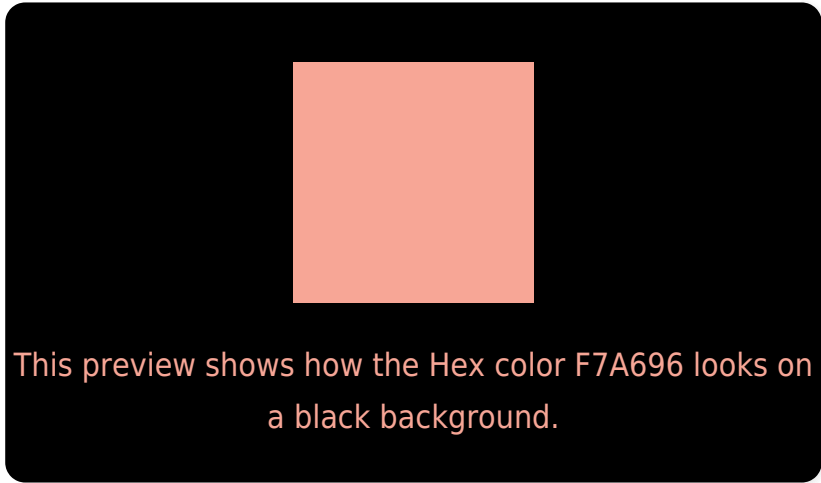
Large Text (above 18pt) WCAG AA × Fail

Any Text WCAG AA × Fail

Large Text (above 18pt) WCAG AAA × Fail

Any Text WCAG AAA × Fail

Black Background



Color Contrast Check

Large Text (above 18pt) WCAG AA ✓ Pass

Any Text WCAG AA ✓ Pass

Large Text (above 18pt) WCAG AAA ✓ Pass

Any Text WCAG AAA ✓ Pass

If you want to check with other color combinations, try the [Color Contrast Checker](#).

Hex F7A696 Background



This preview shows how black text looks on a background with the Hex color F7A696.

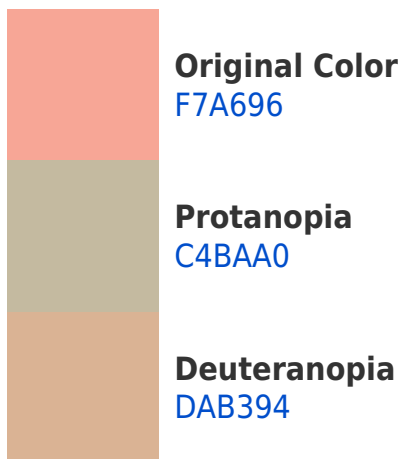


This preview shows how white text looks on a background with the Hex color F7A696.

Color Blindness Simulation

Color vision deficiency is a very complex topic, and I could not describe the different causes any better than Wikipedia does, so if you want to learn more, you should check out their [article about color blindness](#).

Dichromacy



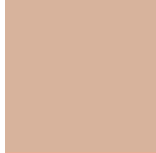


Tritanopia
F9A2AF

Trichromacy



Original Color
F7A696



Protanomaly
D7B39C



Deuteranomaly
E5AE95

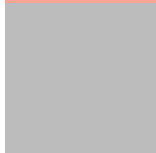


Tritanomaly
F8A3A6

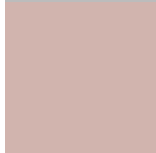
Monochromacy



Original Color
F7A696



Achromatopsia
BCBCBC



Achromatomaly
D1B4AE

CSS Examples

Text

The CSS property to change the color of the text to Hex F7A696 is called "color". The color property can be set on classes, ids or directly on the HTML element.

This example shows how text in the color #F7A696 looks like.

```
.text, #text, p{  
    color:#F7A696  
}
```

If you want to add a text shadow in that color use the text-shadow property, you can generate a text shadow directly with our [CSS Text Shadow Generator](#).

Here you see how black text with a 4 pixel #F7A696 colored shadow looks like.

```
.shadow{ text-shadow: 4px 4px 2px #F7A696
}
```

Border

The CSS property to change the border of an element to Hex F7A696 is called "border". The border property can be set on classes, ids or directly on the HTML element.

This example shows the color as border, it can be applied via the CSS property "border" or "border-color".

```
.border, #border, table{ border:4px solid
#F7A696 }
```

If only the border color should be changed use the property `border-color`.

```
.border{ border-color:#F7A696 }
```

If you want to add a box shadow in that color use:

Here you see how a box with a 4 pixel #F7A696 colored shadow looks like.

```
.boxshadow{ -moz-box-shadow:4px 4px 4px  
4px #F7A696; -webkit-box-shadow:4px 4px  
4px 4px #F7A696; box-shadow:4px 4px 4px  
4px #F7A696 }
```

Background

The CSS property to change the background color of an element to Hex F7A696 is called "background". The background property can be set on classes, ids or directly on the HTML element.

```
.background, #background, body{  
background:#F7A696 }
```

If only the background color should be changed can be used:

```
.background{ background-color:#F7A696 }
```

This example shows the color as background, it is applied via the CSS property "background".

To optimize and compress your CSS code, you can use our [online CSS compressor and optimizer](#) based on csstidy. If you want to create a linear or radial gradient as background or border, check our [CSS Gradient Generator](#).

Hey! You found this booklet interesting? Support Converting Colors with the new Membership Option!

The pro membership hides all ads, plus gives you double the colors in the color bucket, and more awesome pro features!

[Learn more, Memberships starting at \\$2.50/m!](#)

**Follow me
on Twitter!**

@ConvertingColor