

Converting Colors

Hex(F7BAC1)

Have a look what the booklet for
Hex(F7BAC1) contains.

Hex(F7BAC1)	3
<i>Conversions</i>	4
<i>Details</i>	6
<i>Harmonies</i>	11
<i>Previews</i>	23
<i>Color Blindness Simulation</i>	26
<i>CSS Examples</i>	29

Color

Hex(F7BAC1)

Conversions

Conversions Part 1

Format	Color
Hex	F7BAC1
RGB	247, 186, 193
RGB Percent	97%, 73%, 76%
CMY	0.0314, 0.2706, 0.2431
CMYK	0.00, 0.25, 0.22, 0.03
HSL	353°, 79%, 85%
HSV	353°, 25%, 97%
XYZ	65.5423, 58.7422, 58.3360
YIQ	205.0370, 34.1090, 15.1090

Conversions

Conversions Part 2

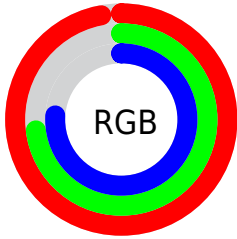
Format	Color
R _Y B	247, 186, 193
Decimal	16235201
CIE Lab	81.15, 22.99, 5.06
CIE LCh	81, 23.540, 12.416
Yxy	58.7422, 0.3589, 0.3217
Android (android.graphics.Color)	4294425281 (0xFFF7BAC1)
YUV	205.0370, -5.9342, 36.8016
Hunter-Lab	76.6435, 18.5197, 8.5228

Details

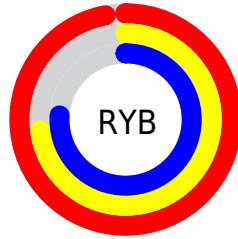
The Hex color **F7BAC1** is a light color, and the websafe version is hex **FFCCCC**. A complement of this color would be **BAF7F0**, and the grayscale version is **CDCDCD**.

A 20% lighter version of the original color is **FFF2F9**, and **BE848C** is the 20% darker color. If you saturate the color by 10%, you get **F7A1AB**, and if you desaturate by 10%, it is **F7D3D7**.

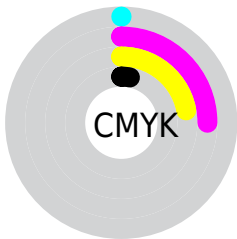
Distribution



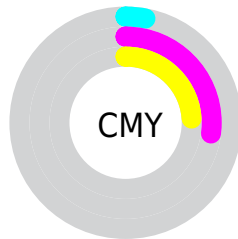
- Red (97%)
- Green (73%)
- Blue (76%)



- Red (97%)
- Yellow (73%)
- Blue (76%)



- Cyan (0%)
- Magenta (25%)
- Yellow (22%)
- Black (3%)



- Cyan (3%)
- Magenta (27%)
- Yellow (24%)

Brightness & Saturation Gradients

These gradients show how the Hex color F7BAC1 changes by changing the brightness by 10 percent. The first figure shows a shift by +10% for each color and the second figure -10%.

Similar to the brightness gradients but the following saturation gradients show a change of the Hex color F7BAC1 by changing the saturation by 10% instead.

 F7BAC1

FFFFFF

 FFF2F9

 F7BAC1

 DA9FA6

 BE848C

 A26B72

 87525A

 6D3B42

 53242C

 3A0E18

 270000

 000000

 F7BAC1

 F7BAC1

 F7A1AB

 F7D3D7

 F78995

 F7EBED

 F7707F

 F7FFFF

 F7576A

 F73F54

 F7263E

 F70D28

 F7001C

Harmonies

Analogous

The Analogous color harmony consists of three colors that are next to each other on the color wheel.



EEBBD7



F7BAC1



F4BDAD

Triad

The Triadic color harmony groups three colors that are evenly spaced from another and form a triangle on the color wheel.



F7BAC1



B8D1A9



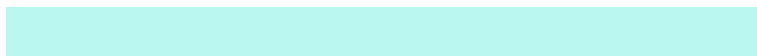
A0CFF3

Complementary

The Complementary color scheme is a pair of colors which are on the opposite of each other on the color wheel.



F7BAC1



BAF7F0

Split Complementary

Split-complementary colors differ from the complementary color scheme. The scheme consists of three colors, the original color and two neighbors of the complement color.



8ED4E6



F7BAC1



A0D5BC

Square

The Square scheme is like the rectangle color scheme, but the four colors are evenly spaced on the color wheel.



F7BAC1



D1CB9E



8FD6D2



BCC8F4

Rectangle

The Rectangle color scheme consists of four colors that form a rectangle on the color wheel.



F7BAC1



ECC1A3



8FD6D2



98D1F0

Sweetspot

The Sweet Spot groups the original color and five complimentary colors.



F7BAC1



FFEDEF



F0BAF7



807576



000000



808080

Same Dimension

The Same Dimension uses a secret algorithm to generate beautiful new colors.



F7BAC1



FFB3BB



F7D1BA



7A6E70



BA0015



3B0007

Inverse Universe

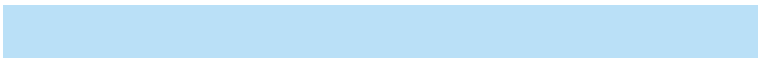
The Inverse Universe completely reimagines the original color for something new.



F7BAC1



FFB3BB



BAE0F7



7A6E70



BA0015



3B0007

Previews

White Background



This preview shows how the Hex color F7BAC1 looks on a white background.

Color Contrast Check

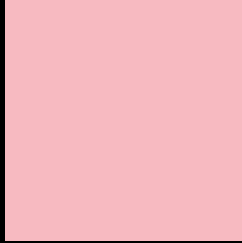
Large Text (above 18pt) WCAG AA × Fail

Any Text WCAG AA × Fail

Large Text (above 18pt) WCAG AAA × Fail

Any Text WCAG AAA × Fail

Black Background



This preview shows how the Hex color F7BAC1 looks on a black background.

Color Contrast Check

Large Text (above 18pt) WCAG AA ✓ Pass

Any Text WCAG AA ✓ Pass

Large Text (above 18pt) WCAG AAA ✓ Pass

Any Text WCAG AAA ✓ Pass

If you want to check with other color combinations, try the [Color Contrast Checker](#).

Hex F7BAC1 Background



This preview shows how black text looks on a background with the Hex color F7BAC1.



This preview shows how white text looks on a background with the Hex color F7BAC1.

Color Blindness Simulation

Color vision deficiency is a very complex topic, and I could not describe the different causes any better than Wikipedia does, so if you want to learn more, you should check out their [article about color blindness](#).

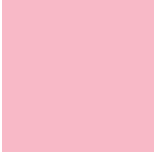
Dichromacy



Original Color
F7BAC1

Protanopia
CDC9C9

Deuteranopia
E1C3BF



Tritanopia
F8B9C7

Trichromacy



Original Color
F7BAC1



Protanomaly
DCC4C6



Deuteranomaly
E9C0C0

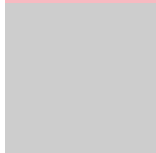


Tritanomaly
F8B9C5

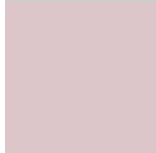
Monochromacy



Original Color
F7BAC1



Achromatopsia
CDCDCD



Achromatomaly
DCC6C9

CSS Examples

Text

The CSS property to change the color of the text to Hex F7BAC1 is called "color". The color property can be set on classes, ids or directly on the HTML element.

This example shows how text in the color #F7BAC1 looks like.

```
.text, #text, p{  
    color:#F7BAC1  
}
```

If you want to add a text shadow in that color use the text-shadow property, you can generate a text shadow directly with our [CSS Text Shadow Generator](#).

Here you see how black text with a 4 pixel #F7BAC1 colored shadow looks like.

```
.shadow{ text-shadow: 4px 4px 2px #F7BAC1
}
```

Border

The CSS property to change the border of an element to Hex F7BAC1 is called "border". The border property can be set on classes, ids or directly on the HTML element.

This example shows the color as border, it can be applied via the CSS property "border" or "border-color".

```
.border, #border, table{ border:4px solid
#F7BAC1 }
```

If only the border color should be changed use the property `border-color`.

```
.border{ border-color:#F7BAC1 }
```

If you want to add a box shadow in that color use:

Here you see how a box with a 4 pixel #F7BAC1 colored shadow looks like.

```
.boxshadow{ -moz-box-shadow:4px 4px 4px  
4px #F7BAC1; -webkit-box-shadow:4px 4px  
4px 4px #F7BAC1; box-shadow:4px 4px 4px  
4px #F7BAC1 }
```

Background

The CSS property to change the background color of an element to Hex F7BAC1 is called "background". The background property can be set on classes, ids or directly on the HTML element.

```
.background, #background, body{  
background:#F7BAC1 }
```

If only the background color should be changed can be used:

```
.background{ background-color:#F7BAC1 }
```

This example shows the color as background, it is applied via the CSS property "background".

To optimize and compress your CSS code, you can use our [online CSS compressor and optimizer](#) based on csstidy. If you want to create a linear or radial gradient as background or border, check our [CSS Gradient Generator](#).

Hey! You found this booklet interesting? Support Converting Colors with the new Membership Option!

The pro membership hides all ads, plus gives you double the colors in the color bucket, and more awesome pro features!

[Learn more, Memberships starting at \\$2.50/m!](#)

**Follow me
on Twitter!**

@ConvertingColor