

Converting Colors

Hex(F7C1B3)

Have a look what the booklet for
Hex(F7C1B3) contains.

Hex(F7C1B3)	3
<i>Conversions</i>	4
<i>Details</i>	6
<i>Harmonies</i>	11
<i>Previews</i>	23
<i>Color Blindness Simulation</i>	26
<i>CSS Examples</i>	29

Color

Hex(F7C1B3)

Conversions

Conversions Part 1

Format	Color
Hex	F7C1B3
RGB	247, 193, 179
RGB Percent	97%, 76%, 70%
CMY	0.0314, 0.2431, 0.2980
CMYK	0.00, 0.22, 0.28, 0.03
HSL	12°, 81%, 84%
HSV	12°, 28%, 97%
XYZ	65.5644, 61.1688, 50.9990
YIQ	207.5500, 36.6780, 7.0940

Conversions

Conversions Part 2

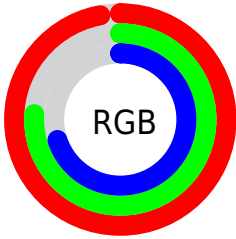
Format	Color
R _Y B	247, 197, 179
Decimal	16236979
CIE Lab	82.47, 17.35, 14.45
CIE LCh	82, 22.582, 39.796
Yxy	61.1688, 0.3689, 0.3442
Android (android.graphics.Color)	4294427059 (0xFFFF7C1B3)
YUV	207.5500, -14.0752, 34.5976
Hunter-Lab	78.2105, 12.7696, 16.0859

Details

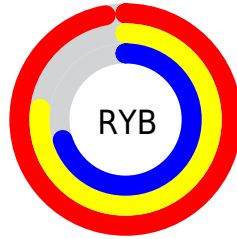
The Hex color **F7C1B3** is a light color, and the websafe version is hex **FFCCCC**. A complement of this color would be **B3E9F7**, and the grayscale version is **D0D0D0**.

A 20% lighter version of the original color is **FFFAEB**, and **BE8B7E** is the 20% darker color. If you saturate the color by 10%, you get **F7AD9A**, and if you desaturate by 10%, it is **F7D5CC**.

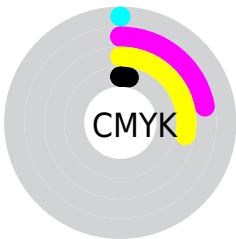
Distribution



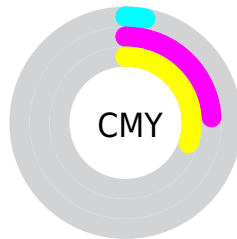
- Red (97%)
- Green (76%)
- Blue (70%)



- Red (97%)
- Yellow (77%)
- Blue (70%)



- Cyan (0%)
- Magenta (22%)
- Yellow (28%)
- Black (3%)



- Cyan (3%)
- Magenta (24%)
- Yellow (30%)

Brightness & Saturation Gradients

These gradients show how the Hex color F7C1B3 changes by changing the brightness by 10 percent. The first figure shows a shift by +10% for each color and the second figure -10%.

Similar to the brightness gradients but the following saturation gradients show a change of the Hex color F7C1B3 by changing the saturation by 10% instead.

 F7C1B3

 F7C1B3

FFFFFF

 DAA698

 FFFAEB

 BE8B7E

 A27265

 87594D

 6C4136

 532B21

 3A150B

 240000

 000000

 F7C1B3

 F7C1B3

 F7AD9A

 F7D5CC

 F79A82

 F7E8E4

 F78669

 F7FCFD

 F77350

 F7FFFF

 F75F37

 F74B1F

 F73806

 F73300

Harmonies

Analogous

The Analogous color harmony consists of three colors that are next to each other on the color wheel.



F9BEC7



F7C1B3



EBC7A6

Triad

The Triadic color harmony groups three colors that are evenly spaced from another and form a triangle on the color wheel.



F7C1B3



A7D8BE



BECDF7

Complementary

The Complementary color scheme is a pair of colors which are on the opposite of each other on the color wheel.



F7C1B3



B3E9F7

Split Complementary

Split-complementary colors differ from the complementary color scheme. The scheme consists of three colors, the original color and two neighbors of the complement color.



A4D3F4



F7C1B3



97DAD4

Square

The Square scheme is like the rectangle color scheme, but the four colors are evenly spaced on the color wheel.



F7C1B3



BED4AC



94D8E8



DAC6EE

Rectangle

The Rectangle color scheme consists of four colors that form a rectangle on the color wheel.



F7C1B3



DECCA3



94D8E8



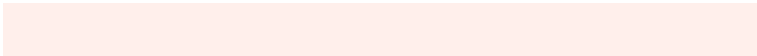
B5CFF7

Sweetspot

The Sweet Spot groups the original color and five complimentary colors.



F7C1B3



FFEFE8



F7B3E9



807573



000000



808080

Same Dimension

The Same Dimension uses a secret algorithm to generate beautiful new colors.



F7C1B3



FFBCAB



F7E3B3



7A716E



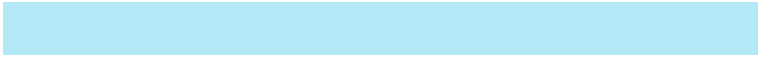
BA2600



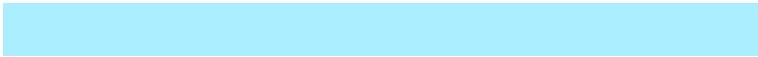
3B0C00

Inverse Universe

The Inverse Universe completely reimagines the original color for something new.



B3E9F7



ABEEFF



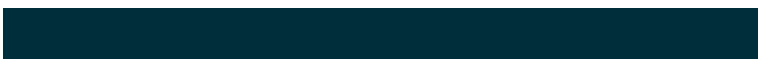
B3C7F7



6E787A



0094BA



002F3B

Previews

White Background



This preview shows how the Hex color F7C1B3 looks on a white background.

Color Contrast Check

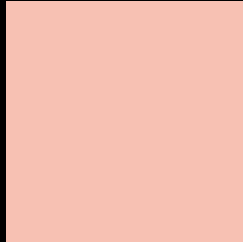
Large Text (above 18pt) WCAG AA × Fail

Any Text WCAG AA × Fail

Large Text (above 18pt) WCAG AAA × Fail

Any Text WCAG AAA × Fail

Black Background



This preview shows how the Hex color F7C1B3 looks on a black background.

Color Contrast Check

Large Text (above 18pt) WCAG AA ✓ Pass

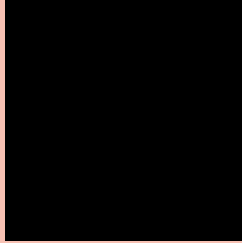
Any Text WCAG AA ✓ Pass

Large Text (above 18pt) WCAG AAA ✓ Pass

Any Text WCAG AAA ✓ Pass

If you want to check with other color combinations, try the [Color Contrast Checker](#).

Hex F7C1B3 Background



This preview shows how black text looks on a background with the Hex color F7C1B3.

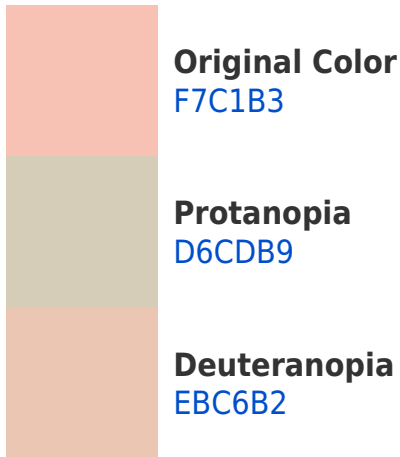


This preview shows how white text looks on a background with the Hex color F7C1B3.

Color Blindness Simulation

Color vision deficiency is a very complex topic, and I could not describe the different causes any better than Wikipedia does, so if you want to learn more, you should check out their [article about color blindness](#).

Dichromacy



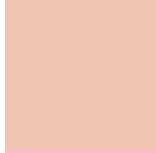
Trichromacy



Original Color
F7C1B3



Protanomaly
E2C9B7



Deuteranomaly
EFC4B2

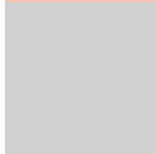


Tritanomaly
F9BEC3

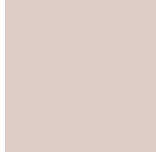
Monochromacy



Original Color
F7C1B3



Achromatopsia
D0D0D0



Achromatomaly
DECBC5

CSS Examples

Text

The CSS property to change the color of the text to Hex F7C1B3 is called "color". The color property can be set on classes, ids or directly on the HTML element.

This example shows how text in the color #F7C1B3 looks like.

```
.text, #text, p{  
    color:#F7C1B3  
}
```

If you want to add a text shadow in that color use the text-shadow property, you can generate a text shadow directly with our [CSS Text Shadow Generator](#).

Here you see how black text with a 4 pixel #F7C1B3 colored shadow looks like.

```
.shadow{ text-shadow: 4px 4px 2px #F7C1B3  
}
```

Border

The CSS property to change the border of an element to Hex F7C1B3 is called "border". The border property can be set on classes, ids or directly on the HTML element.

This example shows the color as border, it can be applied via the CSS property "border" or "border-color".

```
.border, #border, table{ border:4px solid  
#F7C1B3 }
```

If only the border color should be changed use the property `border-color`.

```
.border{ border-color:#F7C1B3 }
```

If you want to add a box shadow in that color use:

Here you see how a box with a 4 pixel #F7C1B3 colored shadow looks like.

```
.boxshadow{ -moz-box-shadow:4px 4px 4px  
4px #F7C1B3; -webkit-box-shadow:4px 4px  
4px 4px #F7C1B3; box-shadow:4px 4px 4px  
4px #F7C1B3 }
```

Background

The CSS property to change the background color of an element to Hex F7C1B3 is called "background". The background property can be set on classes, ids or directly on the HTML element.

```
.background, #background, body{  
background:#F7C1B3 }
```

If only the background color should be changed can be used:

```
.background{ background-color:#F7C1B3 }
```

This example shows the color as background, it is applied via the CSS property "background".

To optimize and compress your CSS code, you can use our [online CSS compressor and optimizer](#) based on csstidy. If you want to create a linear or radial gradient as background or border, check our [CSS Gradient Generator](#).

Hey! You found this booklet interesting? Support Converting Colors with the new Membership Option!

The pro membership hides all ads, plus gives you double the colors in the color bucket, and more awesome pro features!

[Learn more, Memberships starting at \\$2.50/m!](#)

**Follow me
on Twitter!**

@ConvertingColor