

Converting Colors

Hex(F7C4E9)

Have a look what the booklet for
Hex(F7C4E9) contains.

Hex(F7C4E9)	3
<i>Conversions</i>	4
<i>Details</i>	6
<i>Harmonies</i>	11
<i>Previews</i>	23
<i>Color Blindness Simulation</i>	26
<i>CSS Examples</i>	29

Color

Hex(F7C4E9)

Conversions

Conversions Part 1

Format	Color
Hex	F7C4E9
RGB	247, 196, 233
RGB Percent	97%, 77%, 91%
CMY	0.0314, 0.2314, 0.0863
CMYK	0.00, 0.21, 0.06, 0.03
HSL	316°, 76%, 87%
HSV	316°, 21%, 97%
XYZ	72.8057, 65.1372, 85.8263
YIQ	215.4670, 18.5190, 22.3190

Conversions

Conversions Part 2

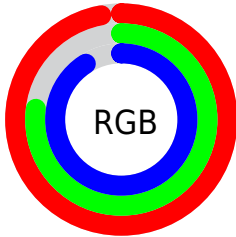
Format	Color
R_{YB}	247, 196, 233
Decimal	16237801
CIE _{Lab}	84.55, 24.06, -11.38
CIE _{LCh}	85, 26.618, 334.690
Yxy	65.1372, 0.3254, 0.2911
Android (android.graphics.Color)	4294427881 (0xFFFF7C4E9)
YUV	215.4670, 8.6438, 27.6544
Hunter-Lab	80.7076, 19.7850, -6.5549

Details

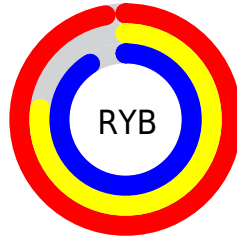
The Hex color **F7C4E9** is a light color, and the websafe version is hex **FFCCFF**. A complement of this color would be **C4F7D2**, and the grayscale version is **D7D7D7**.

A 20% lighter version of the original color is **FFFDFD**, and **BE8EB1** is the 20% darker color. If you saturate the color by 10%, you get **F7ABE2**, and if you desaturate by 10%, it is **F7DDF0**.

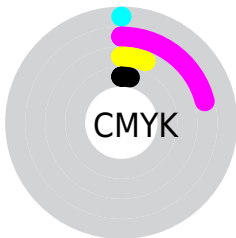
Distribution



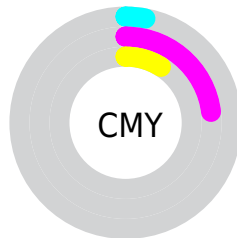
- Red (97%)
- Green (77%)
- Blue (91%)



- Red (97%)
- Yellow (77%)
- Blue (91%)



- Cyan (0%)
- Magenta (21%)
- Yellow (6%)
- Black (3%)



- Cyan (3%)
- Magenta (23%)
- Yellow (9%)

Brightness & Saturation Gradients

These gradients show how the Hex color F7C4E9 changes by changing the brightness by 10 percent. The first figure shows a shift by +10% for each color and the second figure -10%.

Similar to the brightness gradients but the following saturation gradients show a change of the Hex color F7C4E9 by changing the saturation by 10% instead.

 F7C4E9

 F7C4E9

FFFFFF

 DAA9CD

 FFFDFD

 BE8EB1

 A37497

 885B7D

 6E4364

 552C4C

 3D1635

 270020

 000005

 F7C4E9

 F7C4E9

 F7ABE2

 F7DDF0

 F793DB

 F7F5F7

 F77AD5

 F7FFFD

 F761CE

 F7FFFF

 F749C7

 F730C0

 F717BA

 F700B3

Harmonies

Analogous

The Analogous color harmony consists of three colors that are next to each other on the color wheel.



DCCBFC



F7C4E9



FFC1D0

Triad

The Triadic color harmony groups three colors that are evenly spaced from another and form a triangle on the color wheel.



F7C4E9



E2D3A1



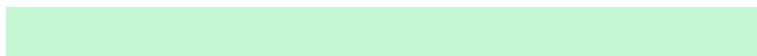
8CE0EF

Complementary

The Complementary color scheme is a pair of colors which are on the opposite of each other on the color wheel.



F7C4E9



C4F7D2

Split Complementary

Split-complementary colors differ from the complementary color scheme. The scheme consists of three colors, the original color and two neighbors of the complement color.



93E1D6



F7C4E9



C6DAA9

Square

The Square scheme is like the rectangle color scheme, but the four colors are evenly spaced on the color wheel.



F7C4E9



F8CAA6



AADFBD



9BDBFF

Rectangle

The Rectangle color scheme consists of four colors that form a rectangle on the color wheel.



F7C4E9



FFC2BF



AADFBD



8CE1E7

Sweetspot

The Sweet Spot groups the original color and five complimentary colors.



F7C4E9



FFF0FB



D2C4F7



80777D



000000



808080

Same Dimension

The Same Dimension uses a secret algorithm to generate beautiful new colors.



F7C4E9



FFBFED



F7C4D0



7A6E77



BA0087



3B002B

Inverse Universe

The Inverse Universe completely reimagines the original color for something new.



F7C4E9



FFBFEE



C4F7EB



7A6E77



BA0087



3B002B

Previews

White Background



This preview shows how the Hex color F7C4E9 looks on a white background.

Color Contrast Check

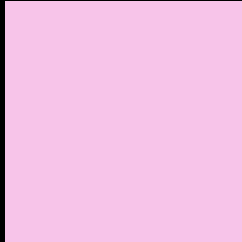
Large Text (above 18pt) WCAG AA × Fail

Any Text WCAG AA × Fail

Large Text (above 18pt) WCAG AAA × Fail

Any Text WCAG AAA × Fail

Black Background



This preview shows how the Hex color F7C4E9 looks on a black background.

Color Contrast Check

Large Text (above 18pt) WCAG AA ✓ Pass

Any Text WCAG AA ✓ Pass

Large Text (above 18pt) WCAG AAA ✓ Pass

Any Text WCAG AAA ✓ Pass

If you want to check with other color combinations, try the [Color Contrast Checker](#).

Hex F7C4E9 Background



This preview shows how black text looks on a background with the Hex color F7C4E9.

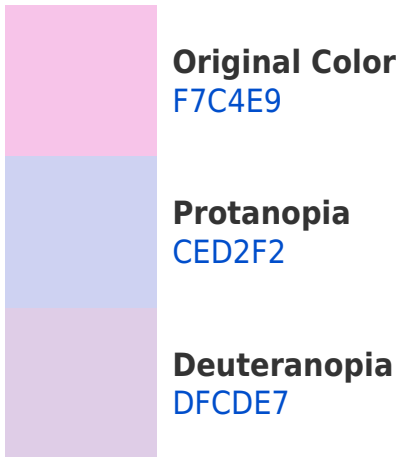


This preview shows how white text looks on a background with the Hex color F7C4E9.

Color Blindness Simulation

Color vision deficiency is a very complex topic, and I could not describe the different causes any better than Wikipedia does, so if you want to learn more, you should check out their [article about color blindness](#).

Dichromacy



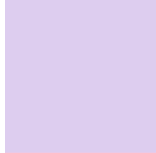


Tritanopia
F5C7D7

Trichromacy



Original Color
F7C4E9



Protanomaly
DDCDEF



Deuteranomaly
E8CAE8

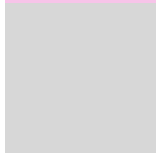


Tritanomaly
F6C6DE

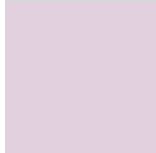
Monochromacy



Original Color
F7C4E9



Achromatopsia
D7D7D7



Achromatomaly
E3D0DE

CSS Examples

Text

The CSS property to change the color of the text to Hex F7C4E9 is called "color". The color property can be set on classes, ids or directly on the HTML element.

This example shows how text in the color #F7C4E9 looks like.

```
.text, #text, p{  
    color:#F7C4E9  
}
```

If you want to add a text shadow in that color use the text-shadow property, you can generate a text shadow directly with our [CSS Text Shadow Generator](#).

Here you see how black text with a 4 pixel #F7C4E9 colored shadow looks like.

```
.shadow{ text-shadow: 4px 4px 2px #F7C4E9
}
```

Border

The CSS property to change the border of an element to Hex F7C4E9 is called "border". The border property can be set on classes, ids or directly on the HTML element.

This example shows the color as border, it can be applied via the CSS property "border" or "border-color".

```
.border, #border, table{ border:4px solid
#F7C4E9 }
```

If only the border color should be changed use the property `border-color`.

```
.border{ border-color:#F7C4E9 }
```

If you want to add a box shadow in that color use:

Here you see how a box with a 4 pixel #F7C4E9 colored shadow looks like.

```
.boxshadow{ -moz-box-shadow:4px 4px 4px  
4px #F7C4E9; -webkit-box-shadow:4px 4px  
4px 4px #F7C4E9; box-shadow:4px 4px 4px  
4px #F7C4E9 }
```

Background

The CSS property to change the background color of an element to Hex F7C4E9 is called "background". The background property can be set on classes, ids or directly on the HTML element.

```
.background, #background, body{  
background:#F7C4E9 }
```

If only the background color should be changed can be used:

```
.background{ background-color:#F7C4E9 }
```

This example shows the color as background, it is applied via the CSS property "background".

To optimize and compress your CSS code, you can use our [online CSS compressor and optimizer](#) based on csstidy. If you want to create a linear or radial gradient as background or border, check our [CSS Gradient Generator](#).

Hey! You found this booklet interesting? Support Converting Colors with the new Membership Option!

The pro membership hides all ads, plus gives you double the colors in the color bucket, and more awesome pro features!

[Learn more, Memberships starting at \\$2.50/m!](#)

**Follow me
on Twitter!**

@ConvertingColor