

Converting Colors

Hex(F7C6CD)

Have a look what the booklet for
Hex(F7C6CD) contains.

Hex(F7C6CD)	3
<i>Conversions</i>	4
<i>Details</i>	6
<i>Harmonies</i>	11
<i>Previews</i>	23
<i>Color Blindness Simulation</i>	26
<i>CSS Examples</i>	29

Color

Hex(F7C6CD)

Conversions

Conversions Part 1

Format	Color
Hex	F7C6CD
RGB	247, 198, 205
RGB Percent	97%, 78%, 80%
CMY	0.0314, 0.2235, 0.1961
CMYK	0.00, 0.20, 0.17, 0.03
HSL	351°, 75%, 87%
HSV	351°, 20%, 97%
XYZ	69.5713, 64.5701, 66.5541
YIQ	213.4490, 26.9570, 12.5650

Conversions

Conversions Part 2

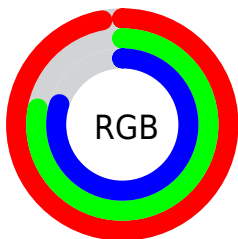
Format	Color
R _Y B	247, 198, 205
Decimal	16238285
CIE _{Lab}	84.26, 18.45, 3.13
CIE _{LCh}	84, 18.711, 9.634
Y _{xy}	64.5701, 0.3467, 0.3217
Android (android.graphics.Color)	4294428365 (0xFFFF7C6CD)
Y _{UV}	213.4490, -4.1654, 29.4242
Hunter-Lab	80.3555, 13.9220, 7.1422

Details

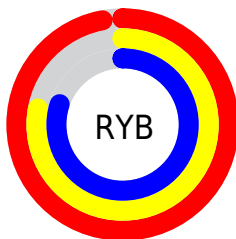
The Hex color **F7C6CD** is a light color, and the websafe version is hex **FFCCCC**. A complement of this color would be **C6F7F0**, and the grayscale version is **D5D5D5**.

A 20% lighter version of the original color is **FFFFFF**, and **BE9097** is the 20% darker color. If you saturate the color by 10%, you get **F7ADB8**, and if you desaturate by 10%, it is **F7DFE2**.

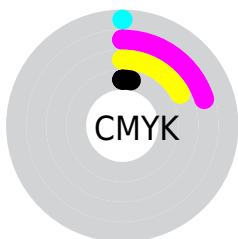
Distribution



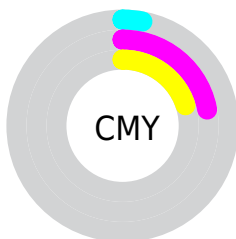
- Red (97%)
- Green (78%)
- Blue (80%)



- Red (97%)
- Yellow (78%)
- Blue (80%)



- Cyan (0%)
- Magenta (20%)
- Yellow (17%)
- Black (3%)



- Cyan (3%)
- Magenta (22%)
- Yellow (20%)

Brightness & Saturation Gradients

These gradients show how the Hex color F7C6CD changes by changing the brightness by 10 percent. The first figure shows a shift by +10% for each color and the second figure -10%.

Similar to the brightness gradients but the following saturation gradients show a change of the Hex color F7C6CD by changing the saturation by 10% instead.

 F7C6CD

FFFFFF

 F7C6CD

 DAABB2

 BE9097

 A3767D

 885D64

 6E454C

 552F36

 3D1920

 270109

 000000

 F7C6CD

 F7C6CD

 F7ADB8

 F7DFE2

 F795A3

 F7F7F7

 F77C8D

 F7FFFF

 F76378

 F74B63

 F7324E

 F71939

 F70024

 F70023

Harmonies

Analogous

The Analogous color harmony consists of three colors that are next to each other on the color wheel.



EEC7DF



F7C6CD



F6C8BC

Triad

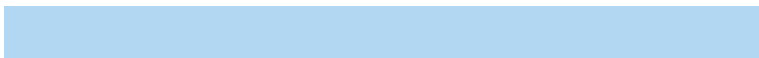
The Triadic color harmony groups three colors that are evenly spaced from another and form a triangle on the color wheel.



F7C6CD



C6D8B7



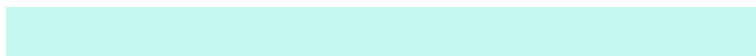
B1D7F3

Complementary

The Complementary color scheme is a pair of colors which are on the opposite of each other on the color wheel.



F7C6CD



C6F7F0

Split Complementary

Split-complementary colors differ from the complementary color scheme. The scheme consists of three colors, the original color and two neighbors of the complement color.



A5DBE8



F7C6CD



B3DCC5

Square

The Square scheme is like the rectangle color scheme, but the four colors are evenly spaced on the color wheel.



F7C6CD



DAD3B0



A6DDD7



C6D2F5

Rectangle

The Rectangle color scheme consists of four colors that form a rectangle on the color wheel.



F7C6CD



F0CBB4



A6DDD7



ACD9F0

Sweetspot

The Sweet Spot groups the original color and five complimentary colors.



F7C6CD



FFF0F2



F0C6F7



807778



000000



808080

Same Dimension

The Same Dimension uses a secret algorithm to generate beautiful new colors.



F7C6CD



FFC2CB



F7D7C6



7A6E70



BA001B



3B0008

Inverse Universe

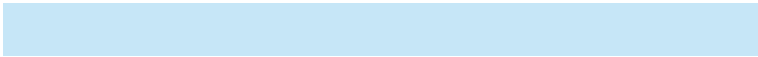
The Inverse Universe completely reimagines the original color for something new.



F7C6CD



FFC2CB



C6E6F7



7A6E70



BA001B



3B0008

Previews

White Background



This preview shows how the Hex color F7C6CD looks on a white background.

Color Contrast Check

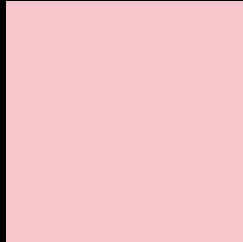
Large Text (above 18pt) WCAG AA × Fail

Any Text WCAG AA × Fail

Large Text (above 18pt) WCAG AAA × Fail

Any Text WCAG AAA × Fail

Black Background



This preview shows how the Hex color F7C6CD looks on a black background.

Color Contrast Check

Large Text (above 18pt) WCAG AA ✓ Pass

Any Text WCAG AA ✓ Pass

Large Text (above 18pt) WCAG AAA ✓ Pass

Any Text WCAG AAA ✓ Pass

If you want to check with other color combinations, try the [Color Contrast Checker](#).

Hex F7C6CD Background



This preview shows how black text looks on a background with the Hex color F7C6CD.

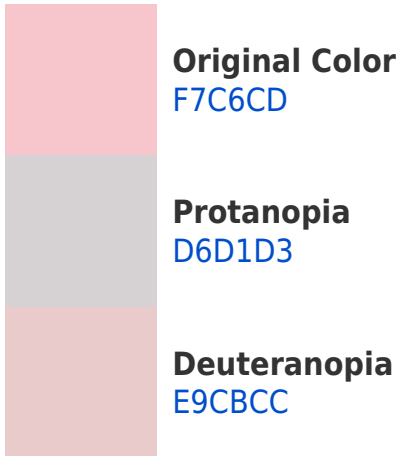


This preview shows how white text looks on a background with the Hex color F7C6CD.

Color Blindness Simulation

Color vision deficiency is a very complex topic, and I could not describe the different causes any better than Wikipedia does, so if you want to learn more, you should check out their [article about color blindness](#).

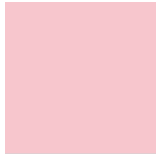
Dichromacy



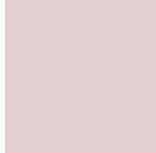


Tritanopia
F8C5D4

Trichromacy



Original Color
F7C6CD



Protanomaly
E2CDD1



Deuteranomaly
EEC9CC

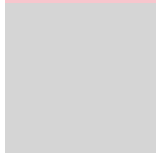


Tritanomaly
F8C5D1

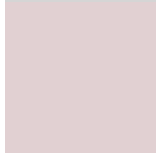
Monochromacy



Original Color
F7C6CD



Achromatopsia
D5D5D5



Achromatomaly
E1D0D2

CSS Examples

Text

The CSS property to change the color of the text to Hex F7C6CD is called "color". The color property can be set on classes, ids or directly on the HTML element.

This example shows how text in the color #F7C6CD looks like.

```
.text, #text, p{  
    color:#F7C6CD  
}
```

If you want to add a text shadow in that color use the text-shadow property, you can generate a text shadow directly with our [CSS Text Shadow Generator](#).

Here you see how black text with a 4 pixel #F7C6CD colored shadow looks like.

```
.shadow{ text-shadow: 4px 4px 2px #F7C6CD
}
```

Border

The CSS property to change the border of an element to Hex F7C6CD is called "border". The border property can be set on classes, ids or directly on the HTML element.

This example shows the color as border, it can be applied via the CSS property "border" or "border-color".

```
.border, #border, table{ border:4px solid
#F7C6CD }
```

If only the border color should be changed use the property `border-color`.

```
.border{ border-color:#F7C6CD }
```

If you want to add a box shadow in that color use:

Here you see how a box with a 4 pixel #F7C6CD colored shadow looks like.

```
.boxshadow{ -moz-box-shadow:4px 4px 4px  
4px #F7C6CD; -webkit-box-shadow:4px 4px  
4px 4px #F7C6CD; box-shadow:4px 4px 4px  
4px #F7C6CD }
```

Background

The CSS property to change the background color of an element to Hex F7C6CD is called "background". The background property can be set on classes, ids or directly on the HTML element.

```
.background, #background, body{  
background:#F7C6CD }
```

If only the background color should be changed can be used:

```
.background{ background-color:#F7C6CD }
```

This example shows the color as background, it is applied via the CSS property "background".

To optimize and compress your CSS code, you can use our [online CSS compressor and optimizer](#) based on csstidy. If you want to create a linear or radial gradient as background or border, check our [CSS Gradient Generator](#).

Hey! You found this booklet interesting? Support Converting Colors with the new Membership Option!

The pro membership hides all ads, plus gives you double the colors in the color bucket, and more awesome pro features!

[Learn more, Memberships starting at \\$2.50/m!](#)

**Follow me
on Twitter!**

@ConvertingColor