

Converting Colors

Hex(F7C6D3)

Have a look what the booklet for
Hex(F7C6D3) contains.

Hex(F7C6D3)	3
<i>Conversions</i>	4
<i>Details</i>	6
<i>Harmonies</i>	11
<i>Previews</i>	23
<i>Color Blindness Simulation</i>	26
<i>CSS Examples</i>	29

Color

Hex(F7C6D3)

Conversions

Conversions Part 1

Format	Color
Hex	F7C6D3
RGB	247, 198, 211
RGB Percent	97%, 78%, 83%
CMY	0.0314, 0.2235, 0.1725
CMYK	0.00, 0.20, 0.15, 0.03
HSL	344°, 75%, 87%
HSV	344°, 20%, 97%
XYZ	70.3097, 64.8655, 70.4426
YIQ	214.1330, 25.0310, 14.4310

Conversions

Conversions Part 2

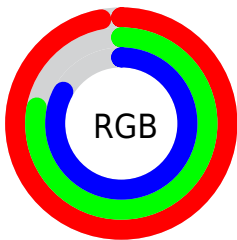
Format	Color
R_{YB}	247, 198, 211
Decimal	16238291
CIE _{Lab}	84.41, 19.38, 0.15
CIE _{LCh}	84, 19.378, 0.447
Yxy	64.8655, 0.3419, 0.3155
Android (android.graphics.Color)	4294428371 (0xFFFF7C6D3)
YUV	214.1330, -1.5446, 28.8244
Hunter-Lab	80.5391, 14.8851, 4.5201

Details

The Hex color **F7C6D3** is a light color, and the websafe version is hex **FFCCCC**. A complement of this color would be **C6F7EA**, and the grayscale version is **D6D6D6**.

A 20% lighter version of the original color is **FFFFFF**, and **BE909D** is the 20% darker color. If you saturate the color by 10%, you get **F7ADC1**, and if you desaturate by 10%, it is **F7DFE5**.

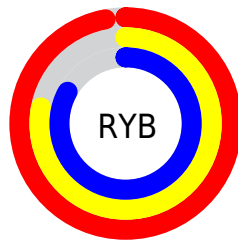
Distribution



Red (97%)

Green (78%)

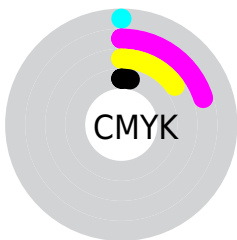
Blue (83%)



Red (97%)

Yellow (78%)

Blue (83%)

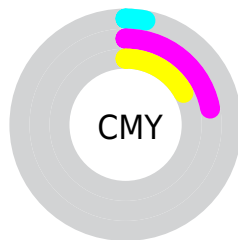


Cyan (0%)

Magenta (20%)

Yellow (15%)

Black (3%)



Cyan (3%)

Magenta (22%)

Yellow (17%)

Brightness & Saturation Gradients

These gradients show how the Hex color F7C6D3 changes by changing the brightness by 10 percent. The first figure shows a shift by +10% for each color and the second figure -10%.

Similar to the brightness gradients but the following saturation gradients show a change of the Hex color F7C6D3 by changing the saturation by 10% instead.

 F7C6D3

FFFFFF

 F7C6D3

 DAABB7

 BE909D

 A37682

 885D69

 6E4551

 552E3A

 3D1925

 270110

 000000

 F7C6D3

 F7C6D3

 F7ADC1

 F7DFE5

 F795AF

 F7F7F7

 F77C9D

 F7FFFF

 F7638A

 F74B78

 F73266

 F71954

 F70042

Harmonies

Analogous

The Analogous color harmony consists of three colors that are next to each other on the color wheel.



EBC9E5



F7C6D3



F9C7C1

Triad

The Triadic color harmony groups three colors that are evenly spaced from another and form a triangle on the color wheel.



F7C6D3



CDD7B3



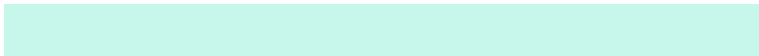
ABD9F2

Complementary

The Complementary color scheme is a pair of colors which are on the opposite of each other on the color wheel.



F7C6D3



C6F7EA

Split Complementary

Split-complementary colors differ from the complementary color scheme. The scheme consists of three colors, the original color and two neighbors of the complement color.



A2DDE4



F7C6D3



B8DBC0

Square

The Square scheme is like the rectangle color scheme, but the four colors are evenly spaced on the color wheel.



F7C6D3



E1D1AE



A8DDD2



BFD4F7

Rectangle

The Rectangle color scheme consists of four colors that form a rectangle on the color wheel.



F7C6D3



F4CAB7



A8DDD2



A6DBEE

Sweetspot

The Sweet Spot groups the original color and five complimentary colors.



F7C6D3



FFF0F4



EAC6F7



807779



000000



808080

Same Dimension

The Same Dimension uses a secret algorithm to generate beautiful new colors.



F7C6D3



FFC2D2



F7D1C6



7A6E71



BA0031



3B0010

Inverse Universe

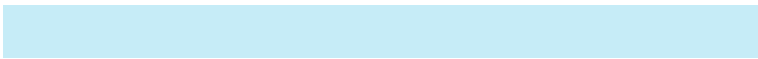
The Inverse Universe completely reimagines the original color for something new.



F7C6D3



FFC2D2



C6ECF7



7A6E71



BA0031



3B0010

Previews

White Background



This preview shows how the Hex color F7C6D3 looks on a white background.

Color Contrast Check

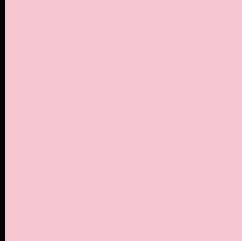
Large Text (above 18pt) WCAG AA × Fail

Any Text WCAG AA × Fail

Large Text (above 18pt) WCAG AAA × Fail

Any Text WCAG AAA × Fail

Black Background



This preview shows how the Hex color F7C6D3 looks on a black background.

Color Contrast Check

Large Text (above 18pt) WCAG AA ✓ Pass

Any Text WCAG AA ✓ Pass

Large Text (above 18pt) WCAG AAA ✓ Pass

Any Text WCAG AAA ✓ Pass

If you want to check with other color combinations, try the [Color Contrast Checker](#).

Hex F7C6D3 Background



This preview shows how black text looks on a background with the Hex color F7C6D3.

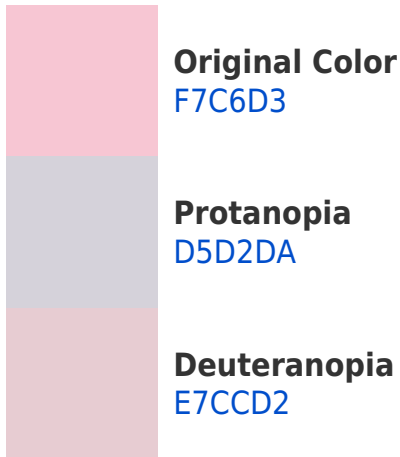


This preview shows how white text looks on a background with the Hex color F7C6D3.

Color Blindness Simulation

Color vision deficiency is a very complex topic, and I could not describe the different causes any better than Wikipedia does, so if you want to learn more, you should check out their [article about color blindness](#).

Dichromacy



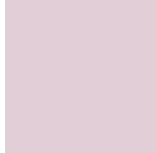


Tritanopia
F7C6D5

Trichromacy



Original Color
F7C6D3



Protanomaly
E1CED7



Deuteranomaly
EDCAD2

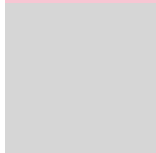


Tritanomaly
F7C6D4

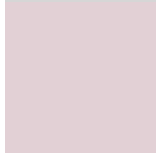
Monochromacy



Original Color
F7C6D3



Achromatopsia
D6D6D6



Achromatomaly
E2D0D5

CSS Examples

Text

The CSS property to change the color of the text to Hex F7C6D3 is called "color". The color property can be set on classes, ids or directly on the HTML element.

This example shows how text in the color #F7C6D3 looks like.

```
.text, #text, p{  
    color:#F7C6D3  
}
```

If you want to add a text shadow in that color use the text-shadow property, you can generate a text shadow directly with our [CSS Text Shadow Generator](#).

Here you see how black text with a 4 pixel #F7C6D3 colored shadow looks like.

```
.shadow{ text-shadow: 4px 4px 2px #F7C6D3
}
```

Border

The CSS property to change the border of an element to Hex F7C6D3 is called "border". The border property can be set on classes, ids or directly on the HTML element.

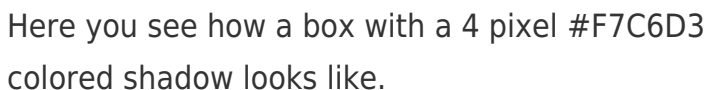
This example shows the color as border, it can be applied via the CSS property "border" or "border-color".

```
.border, #border, table{ border:4px solid
#F7C6D3 }
```

If only the border color should be changed use the property `border-color`.

```
.border{ border-color:#F7C6D3 }
```

If you want to add a box shadow in that color use:



Here you see how a box with a 4 pixel `#F7C6D3` colored shadow looks like.

```
.boxshadow{ -moz-box-shadow:4px 4px 4px  
4px #F7C6D3; -webkit-box-shadow:4px 4px  
4px 4px #F7C6D3; box-shadow:4px 4px 4px  
4px #F7C6D3 }
```

Background

The CSS property to change the background color of an element to Hex F7C6D3 is called "background". The background property can be set on classes, ids or directly on the HTML element.

```
.background, #background, body{  
background:#F7C6D3 }
```

If only the background color should be changed can be used:

```
.background{ background-color:#F7C6D3 }
```

This example shows the color as background, it is applied via the CSS property "background".

To optimize and compress your CSS code, you can use our [online CSS compressor and optimizer](#) based on csstidy. If you want to create a linear or radial gradient as background or border, check our [CSS Gradient Generator](#).

Hey! You found this booklet interesting? Support Converting Colors with the new Membership Option!

The pro membership hides all ads, plus gives you double the colors in the color bucket, and more awesome pro features!

[Learn more, Memberships starting at \\$2.50/m!](#)

**Follow me
on Twitter!**

@ConvertingColor