

# Converting Colors

Hex(F8406E)

Have a look what the booklet for  
Hex(F8406E) contains.

<b>Hex(F8406E)</b> .....	3
<i><b>Conversions</b></i> .....	4
<i><b>Details</b></i> .....	6
<i><b>Harmonies</b></i> .....	11
<i><b>Previews</b></i> .....	23
<i><b>Color Blindness Simulation</b></i> .....	26
<i><b>CSS Examples</b></i> .....	29

# Color

**Hex(F8406E)**

# Conversions

## Conversions Part 1

Format	Color
Hex	F8406E
RGB	248, 64, 110
RGB Percent	97%, 25%, 43%
CMY	0.0275, 0.7490, 0.5686
CMYK	0.00, 0.74, 0.56, 0.03
HSL	345°, 93%, 61%
HSV	345°, 74%, 97%
XYZ	43.3593, 24.7490, 17.2436
YIQ	124.2600, 94.8980, 53.3140

# Conversions

## Conversions Part 2

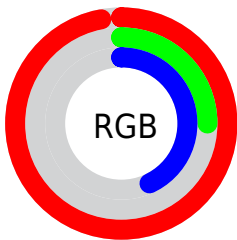
<b>Format</b>	<b>Color</b>
<b>R<sub>YB</sub></b>	248, 64, 110
Decimal	16269422
CIE Lab	56.83, 70.98, 17.36
CIE LCh	57, 73.073, 13.745
Yxy	24.7490, 0.5080, 0.2900
Android (android.graphics.Color)	4294459502 (0xFFFF8406E)
YUV	124.2600, -7.0302, 108.5200
Hunter-Lab	49.7484, 68.5157, 14.2730

# Details

The Hex color **F8406E** is a dark color, and the websafe version is hex **FF3366**. The color can be described as middle washed rose. A complement of this color would be **40F8CA**, and the grayscale version is **7C7C7C**.

A 20% lighter version of the original color is **FF7EA1**, and **B9003F** is the 20% darker color. If you saturate the color by 10%, you get **F8275B**, and if you desaturate by 10%, it is **F85981**.

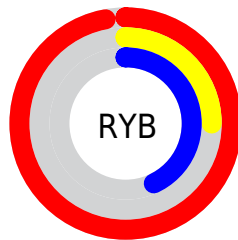
# Distribution



Red (97%)

Green (25%)

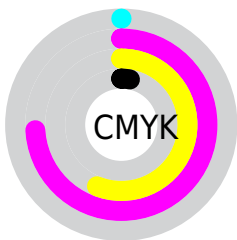
Blue (43%)



Red (97%)

Yellow (25%)

Blue (43%)

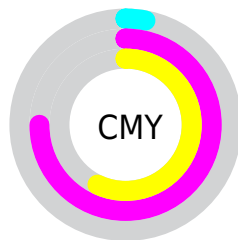


Cyan (0%)

Magenta (74%)

Yellow (56%)

Black (3%)



Cyan (3%)

Magenta (75%)

Yellow (57%)

# Brightness & Saturation Gradients

These gradients show how the Hex color F8406E changes by changing the brightness by 10 percent. The first figure shows a shift by +10% for each color and the second figure -10%.

Similar to the brightness gradients but the following saturation gradients show a change of the Hex color F8406E by changing the saturation by 10% instead.



 F8406E

 F8406E

FFFFFF

 D81656

 FF7EA1

 B9003F

 FF9BBC

 9A002A

 FFB9D8

 7B0016

 FFD6F4

 5C0002

 FFF4FF

 3F0003

 1B0001

 000000

 F8406E

 F8406E

 F8275B

 F85981

 F80E49

 F87293

 F8003E

 F88AA6

 F8A3B8

 F8BCCB

 F8D5DE

 F8EEF0

 F8FFFF

# Harmonies

## Analogous

The Analogous color harmony consists of three colors that are next to each other on the color wheel.



E848AE



F8406E



E85A31

# Triad

The Triadic color harmony groups three colors that are evenly spaced from another and form a triangle on the color wheel.



F8406E



3B9C1E



0099FF

# Complementary

The Complementary color scheme is a pair of colors which are on the opposite of each other on the color wheel.



F8406E



40F8CA

# Split Complementary

Split-complementary colors differ from the complementary color scheme. The scheme consists of three colors, the original color and two neighbors of the complement color.



00A3E0



F8406E



00A362

# Square

The Square scheme is like the rectangle color scheme, but the four colors are evenly spaced on the color wheel.



F8406E



898F00



00A5A5



0186FF

# Rectangle

The Rectangle color scheme consists of four colors that form a rectangle on the color wheel.



F8406E



D06F00



00A5A5



009DFB



# Sweetspot

The Sweet Spot groups the original color and five complimentary colors.



F8406E



FFC7D5



CA40F8



805E67



000000



808080



# Same Dimension

The Same Dimension uses a secret algorithm to generate beautiful new colors.



F8406E



FF1C55



F86E40



7D7074



BD002F



3D000F



# Inverse Universe

The Inverse Universe completely reimagines the original color for something new.



F8406E



FF1C55



40CAF8



7D7074



BD002F



3D000F



# Previews

## White Background



This preview shows how the Hex color F8406E looks on a white background.

## Color Contrast Check

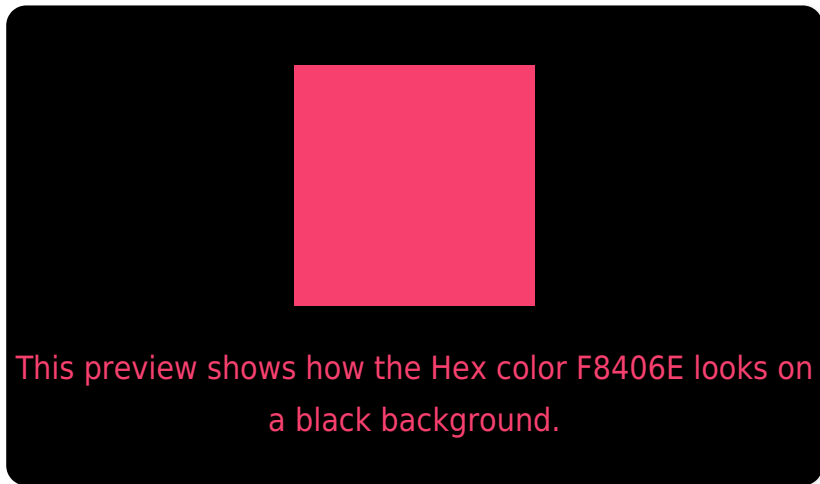
Large Text (above 18pt) WCAG AA ✓ Pass

Any Text WCAG AA × Fail

Large Text (above 18pt) WCAG AAA × Fail

Any Text WCAG AAA × Fail

# Black Background



## Color Contrast Check

Large Text (above 18pt) WCAG AA ✓ Pass

Any Text WCAG AA ✓ Pass

Large Text (above 18pt) WCAG AAA ✓ Pass

Any Text WCAG AAA × Fail

If you want to check with other color combinations, try the [Color Contrast Checker](#).



## Hex F8406E Background



This preview shows how black text looks on a background with the Hex color F8406E.



This preview shows how white text looks on a background with the Hex color F8406E.

# Color Blindness Simulation

Color vision deficiency is a very complex topic, and I could not describe the different causes any better than Wikipedia does, so if you want to learn more, you should check out their [article about color blindness](#).

## Dichromacy



**Original Color**  
F8406E

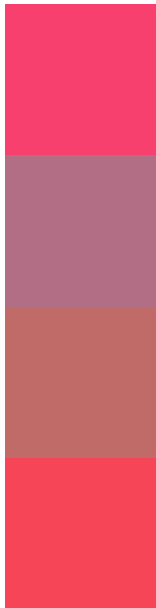
**Protanopia**  
898891

**Deuteranopia**  
A18365



**Tritanopia**  
F6484B

# Trichromacy



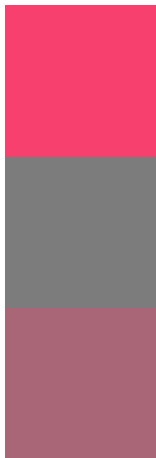
**Original Color**  
F8406E

**Protanomaly**  
B16E84

**Deuteranomaly**  
C16B68

**Tritanomaly**  
F74558

# Monochromacy



**Original Color**  
F8406E

**Achromatopsia**  
7C7C7C

**Achromatomaly**  
A96677

# CSS Examples

## Text

The CSS property to change the color of the text to Hex F8406E is called "color". The color property can be set on classes, ids or directly on the HTML element.

This example shows how text in the color #F8406E looks like.

```
.text, #text, p{  
    color:#F8406E  
}
```

If you want to add a text shadow in that color use the text-shadow property, you can generate a text shadow directly with our [CSS Text Shadow Generator](#).

Here you see how black text with a 4 pixel #F8406E colored shadow looks like.

```
.shadow{ text-shadow: 4px 4px 2px #F8406E
}
```

## Border

The CSS property to change the border of an element to Hex F8406E is called "border". The border property can be set on classes, ids or directly on the HTML element.

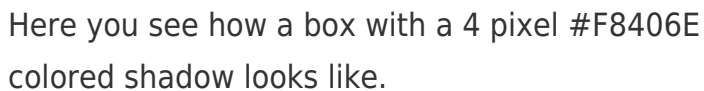
This example shows the color as border, it can be applied via the CSS property "border" or "border-color".

```
.border, #border, table{ border:4px solid
#F8406E }
```

If only the border color should be changed use the property `border-color`.

```
.border{ border-color:#F8406E }
```

If you want to add a box shadow in that color use:



Here you see how a box with a 4 pixel #F8406E colored shadow looks like.

```
.boxshadow{ -moz-box-shadow:4px 4px 4px  
4px #F8406E; -webkit-box-shadow:4px 4px  
4px 4px #F8406E; box-shadow:4px 4px 4px  
4px #F8406E }
```

# Background

The CSS property to change the background color of an element to Hex F8406E is called "background". The background property can be set on classes, ids or directly on the HTML element.

```
.background, #background, body{  
background:#F8406E }
```

If only the background color should be changed can be used:

```
.background{ background-color:#F8406E }
```

This example shows the color as background, it is applied via the CSS property "background".

To optimize and compress your CSS code, you can use our [online CSS compressor and optimizer](#) based on csstidy. If you want to create a linear or radial gradient as background or border, check our [CSS Gradient Generator](#).



Hey! You found this booklet interesting? Support Converting Colors with the new Membership Option!

The pro membership hides all ads, plus gives you double the colors in the color bucket, and more awesome pro features!

**[Learn more, Memberships starting at \\$2.50/m!](#)**

**Follow me  
on Twitter!**

@ConvertingColor